

NOTES

THE PARAPET FOR ANY SPAN SHALL NOT BE CAST UNTIL ALL SLAB CONCRETE IN THE SPAN HAS REACHED A MINIMUM COMPRESSIVE STRENGTH OF 3000 PSI.

ALL REINFORCING STEEL IN PARAPETS AND END POSTS SHALL BE EPOXY COATED.

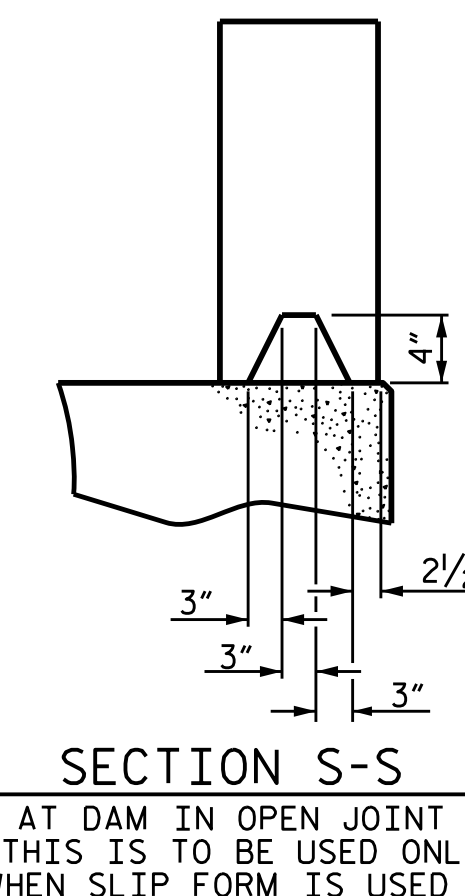
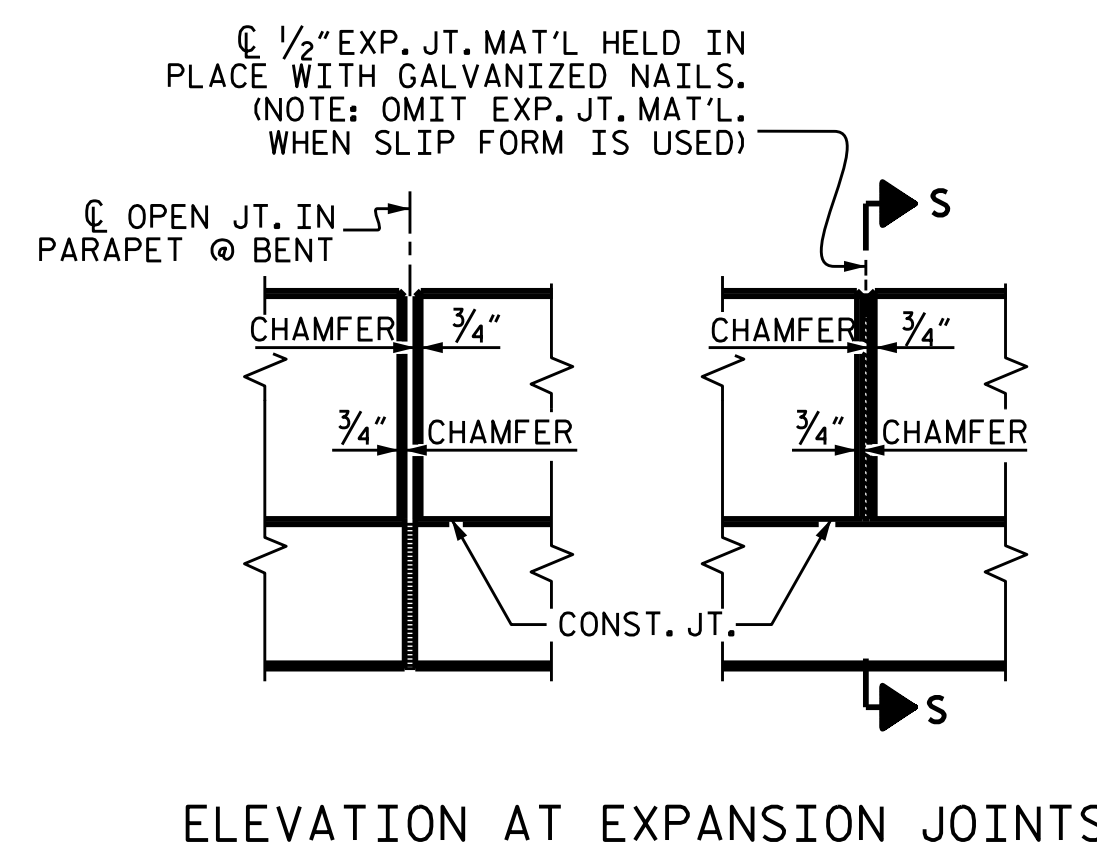
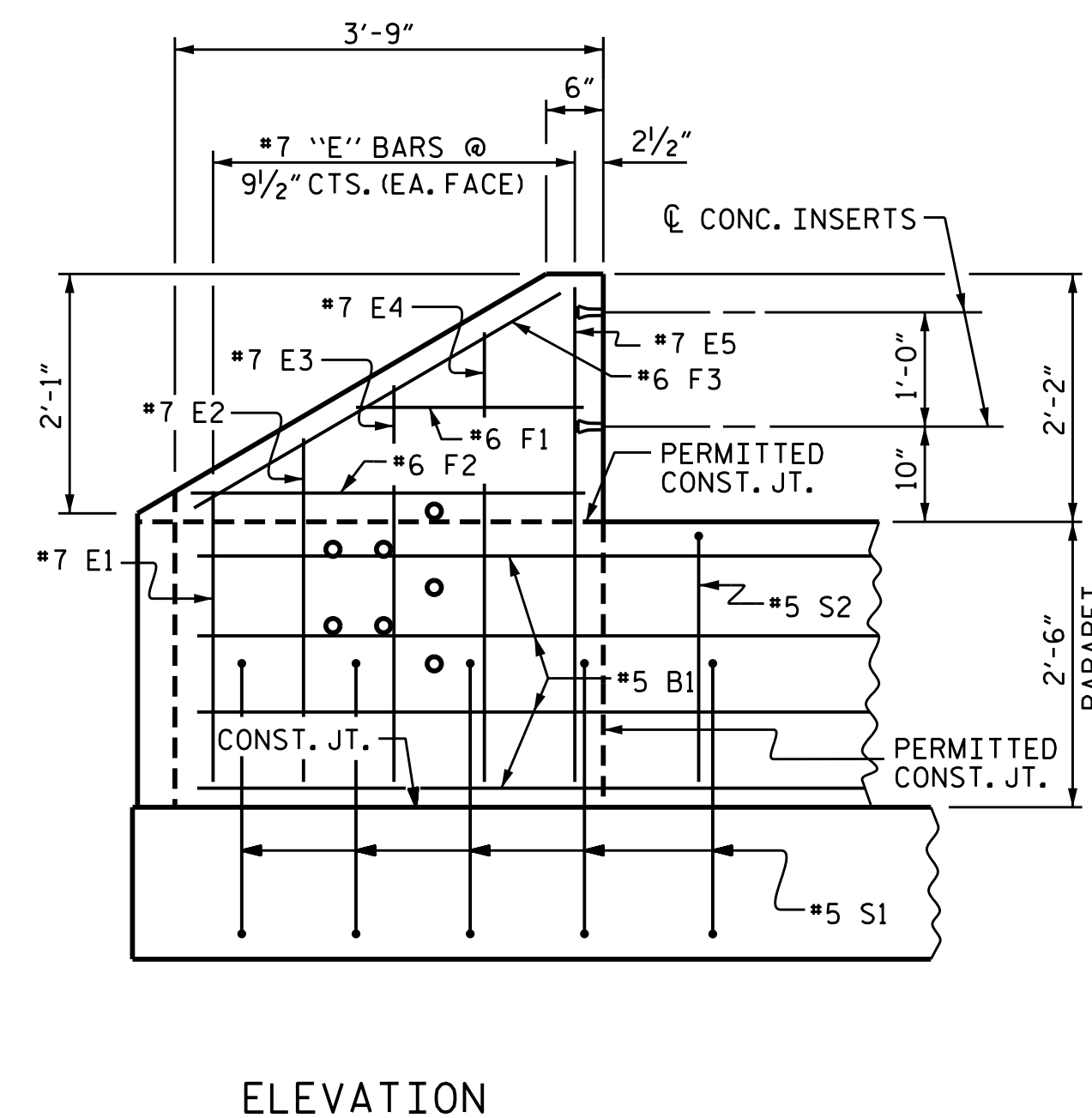
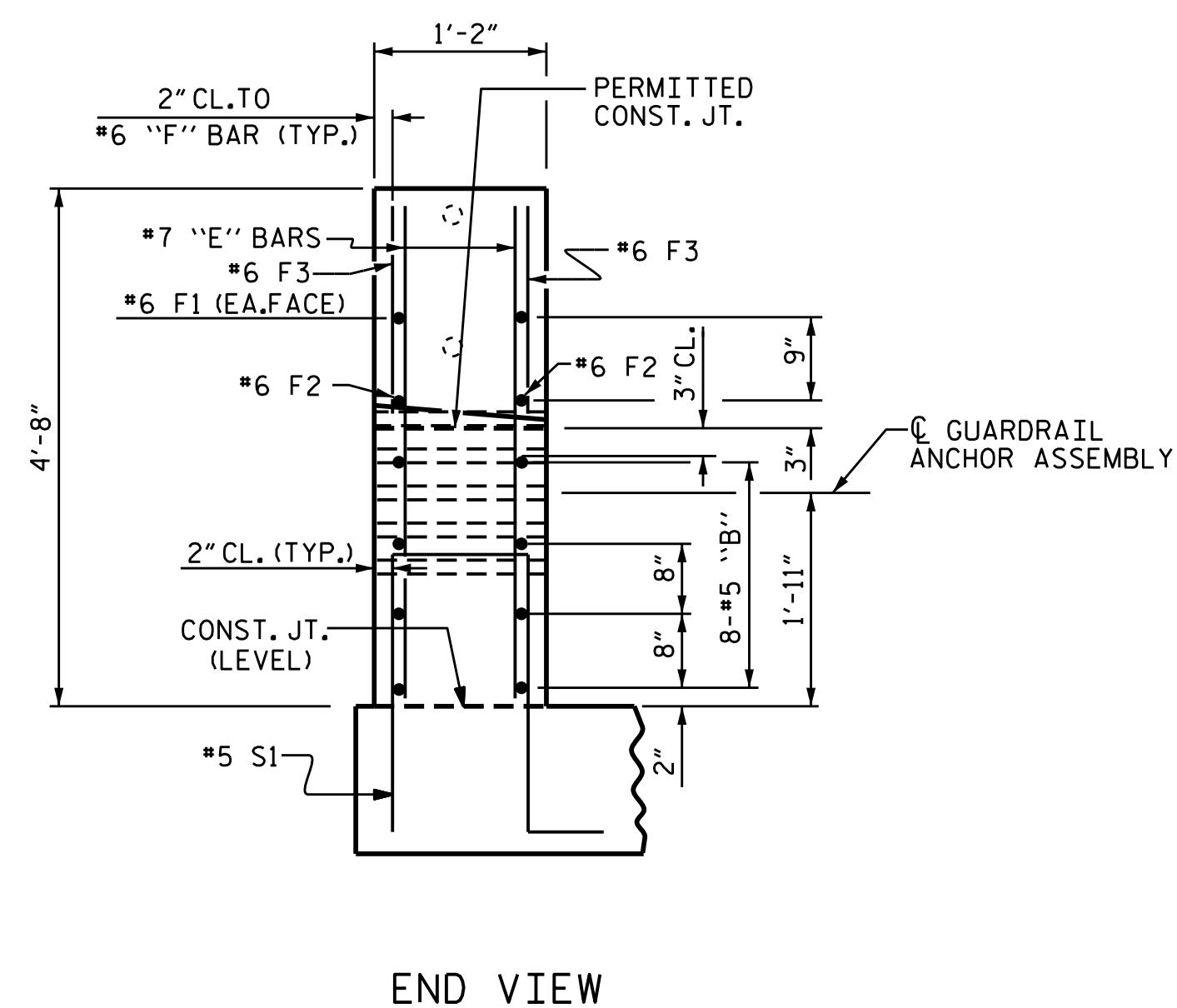
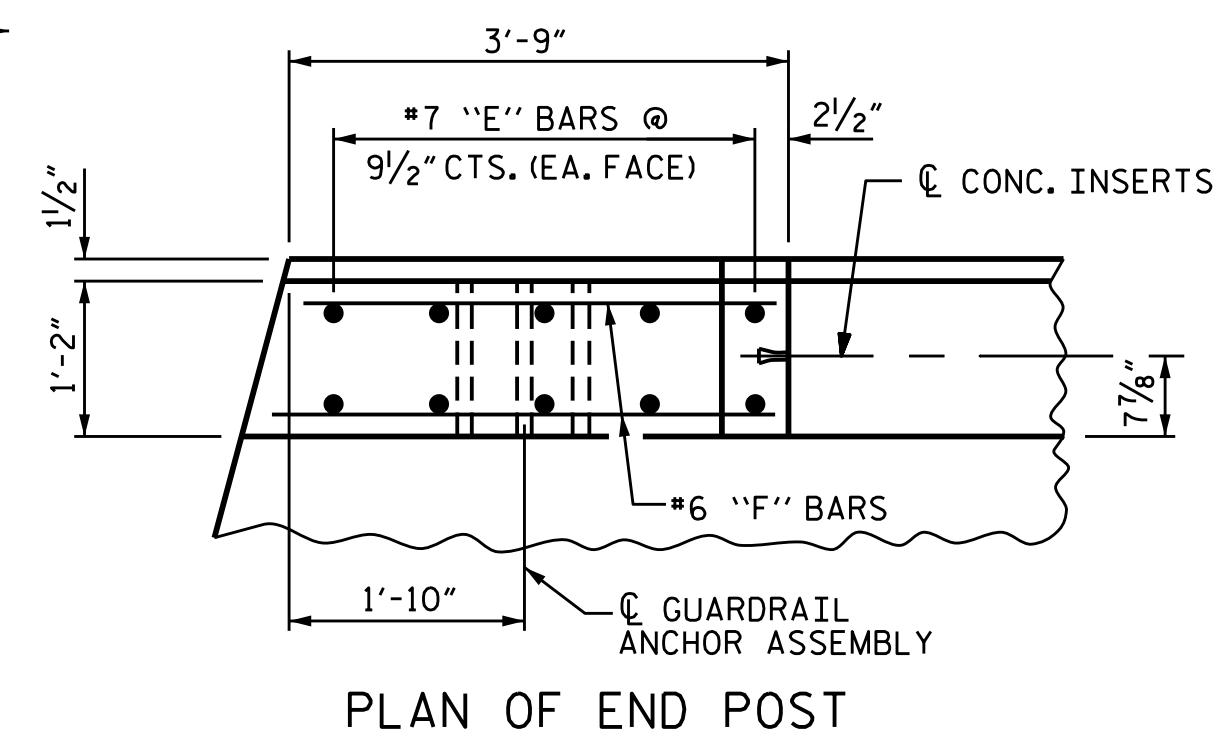
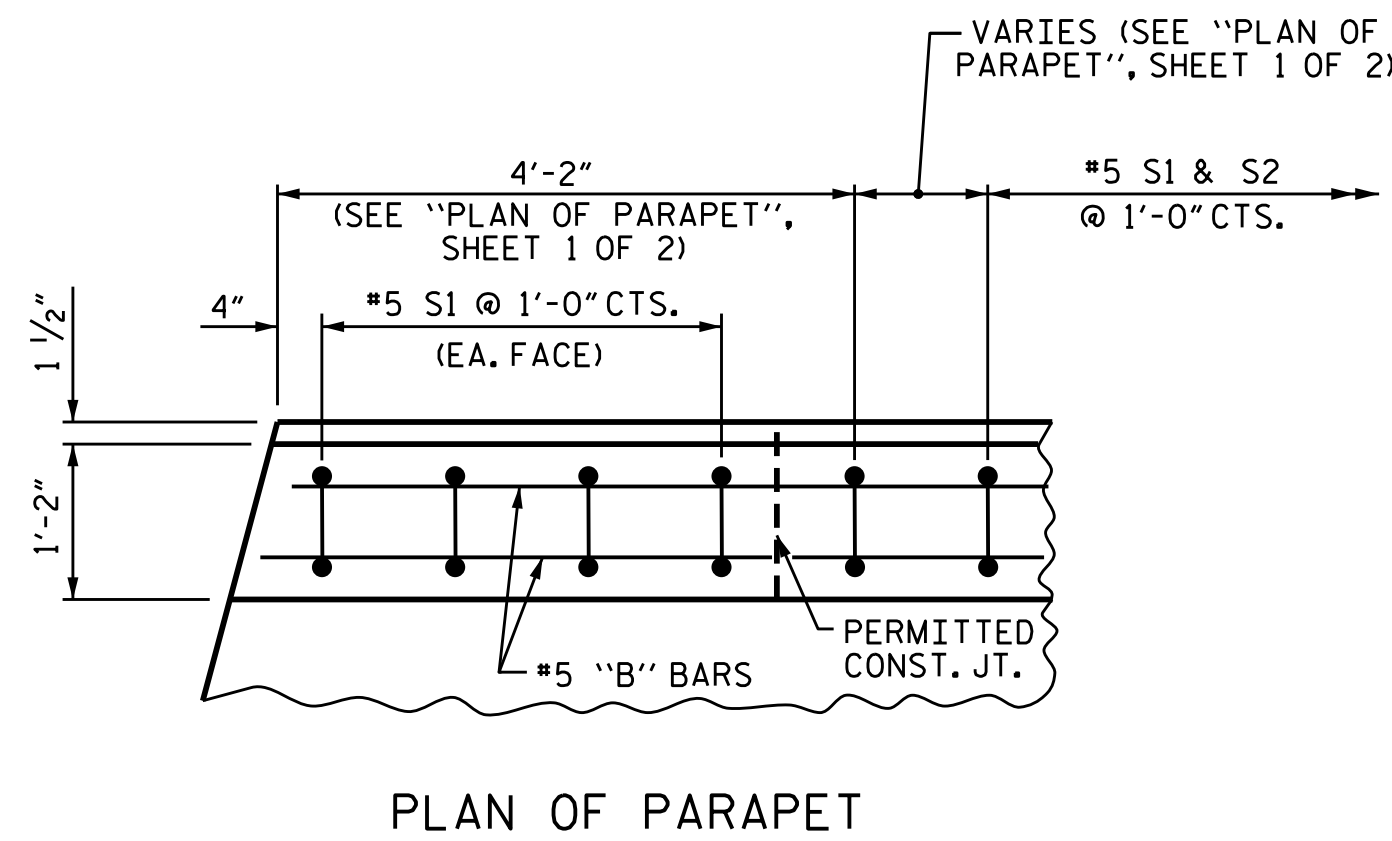
THE #5 S1 BARS MAY BE SHIFTED SLIGHTLY IN ORDER TO MAINTAIN A 2" MINIMUM CLEARANCE TO THE 1/2" EXPANSION JOINT MATERIAL IN THE PARAPET.

FOR DETAILS OF CONCRETE INSERTS IN END POSTS, SEE "RAIL POST SPACINGS AND END OF RAIL DETAILS" SHEET.

FOR DETAILS OF GUARDRAIL ANCHOR ASSEMBLIES, SEE "GUARDRAIL ANCHORAGE FOR METAL RAILS" SHEET.

GROOVED CONTRACTION JOINTS, 1/2" IN DEPTH, SHALL BE TOOLED IN ALL EXPOSED FACES OF THE PARAPET AND IN ACCORDANCE WITH ARTICLE 825-10(B) OF THE STANDARD SPECIFICATIONS. A CONTRACTION JOINT SHALL BE LOCATED AT EACH THIRD POINT BETWEEN PARAPET EXPANSION JOINTS. ONLY ONE CONTRACTION JOINT IS REQUIRED AT MIDPOINT OF PARAPET SEGMENTS LESS THAN 20 FEET IN LENGTH AND NO CONTRACTION JOINTS ARE REQUIRED FOR THOSE SEGMENTS LESS THAN 10 FEET IN LENGTH.

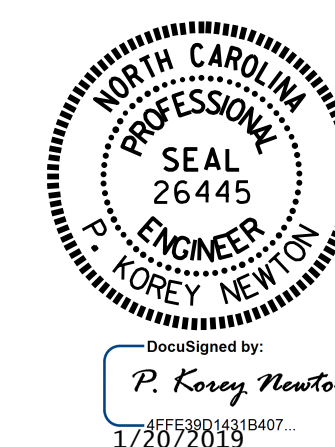
BAR TYPE	BILL OF MATERIAL FOR PARAPET & END POSTS					
	BAR	NO.	SIZE	TYPE	LENGTH	WEIGHT
	*B1	64	#5	STR	11'-0"	734
	*B2	32	#5	STR	18'-7"	620
	*B3	48	#5	STR	20'-7"	1030
	*E1	8	#7	STR	2'-6"	41
	*E2	8	#7	STR	3'-0"	49
	*E3	8	#7	STR	3'-6"	57
	*E4	8	#7	STR	4'-0"	65
	*E5	8	#7	STR	4'-4"	71
	*F1	8	#6	STR	1'-11"	23
	*F2	8	#6	STR	3'-2"	38
	*F3	8	#6	STR	3'-6"	42
	*S1	278	#5	1	5'-5"	1571
	*S2	262	#5	2	5'-6"	1503
* EPOXY COATED REINFORCING STEEL						5844 LBS.
CLASS AA CONCRETE						30.7 CU.YDS.
LENGTH OF CONCRETE PARAPET						276.63 LIN. FT.



PARAPET AND END POST FOR TWO BAR RAIL

PROJECT NO. R-5021
 BRUNSWICK COUNTY
 STATION: 369+42.00 -L-

SHEET 2 OF 2



STATE OF NORTH CAROLINA DEPARTMENT OF TRANSPORTATION RALEIGH					
SUPERSTRUCTURE PLAN OF PARAPET AND END POST DETAILS (EBL)					
REVISIONS					SHEET NO.
NO.	BY:	DATE:	NO.	BY:	DATE:
1			3		
2			4		
TOTAL SHEETS					S2-20
					38

DRAWN BY : WFP / OTN DATE : 8/15/18
 CHECKED BY : M.K. BEARD DATE : 11/18
 DESIGN ENGINEER OF RECORD: A.K. PATEL DATE : 1/10/19

DOCUMENT NOT CONSIDERED
 FINAL UNLESS ALL
 SIGNATURES COMPLETED