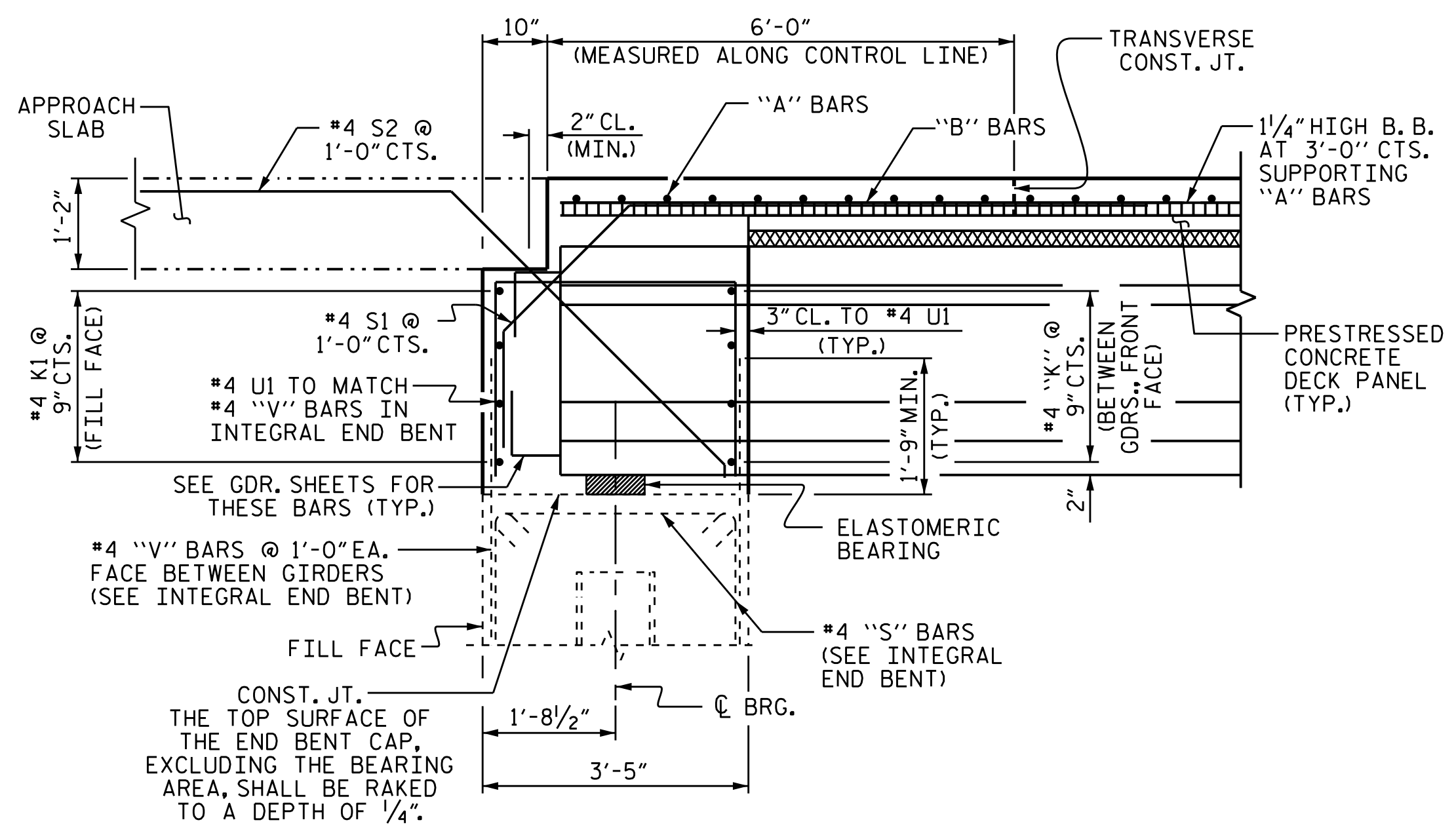
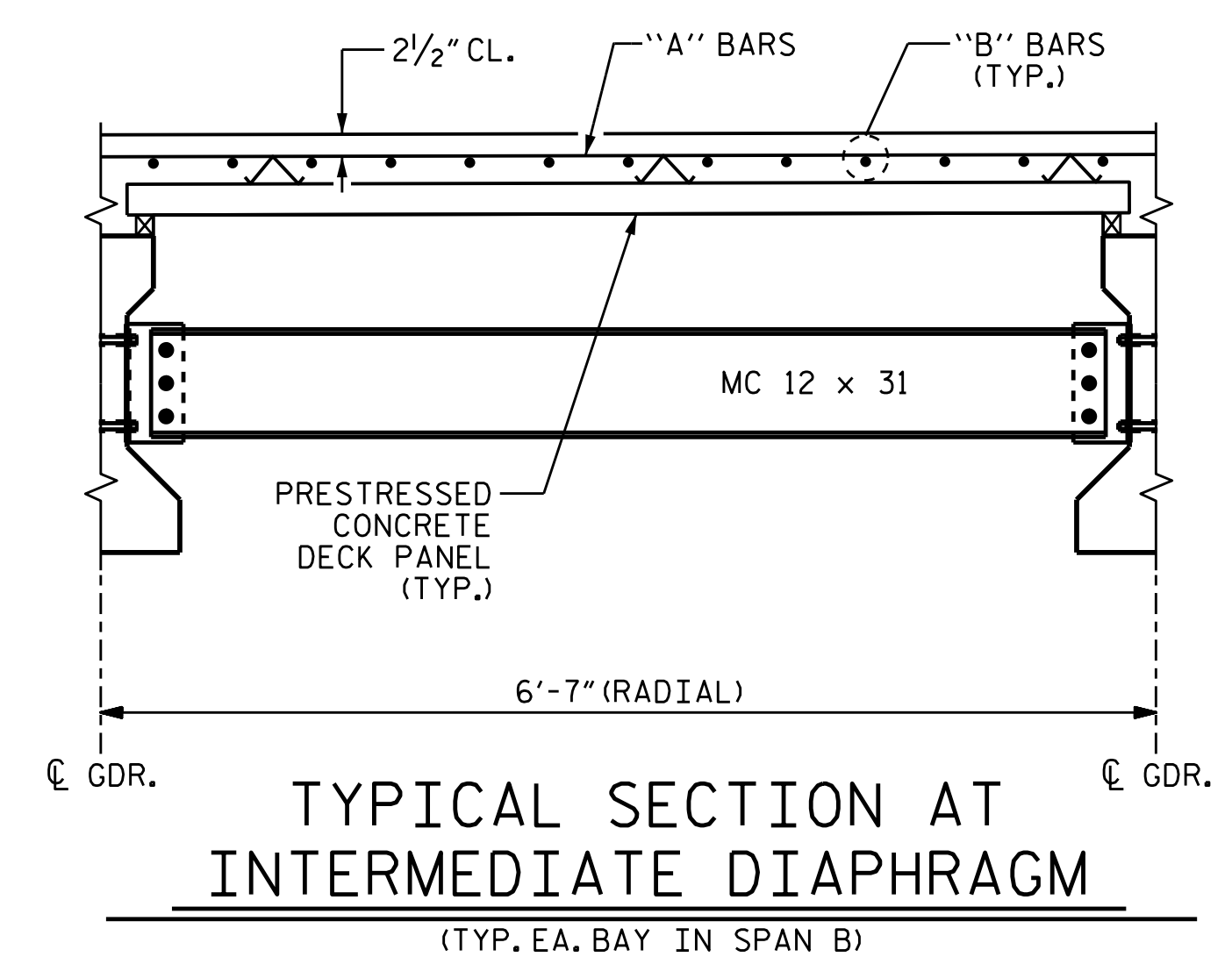


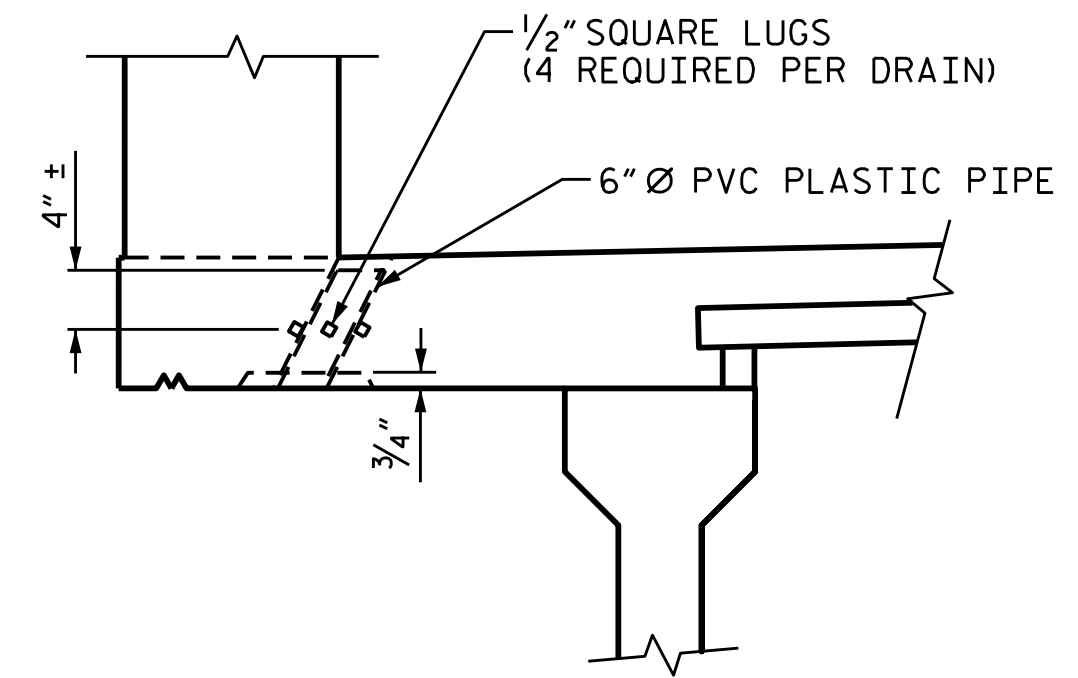
SECTION @ LINK SLAB



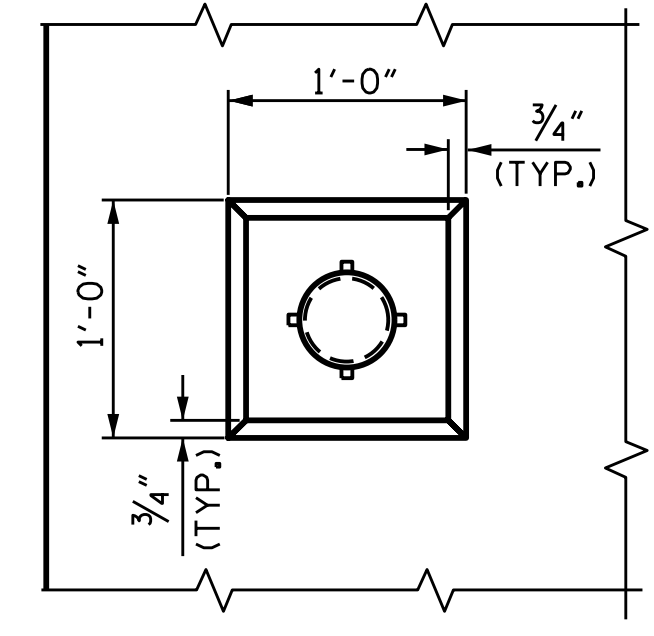
END OF GIRDER DETAIL AT INTEGRAL END BENT



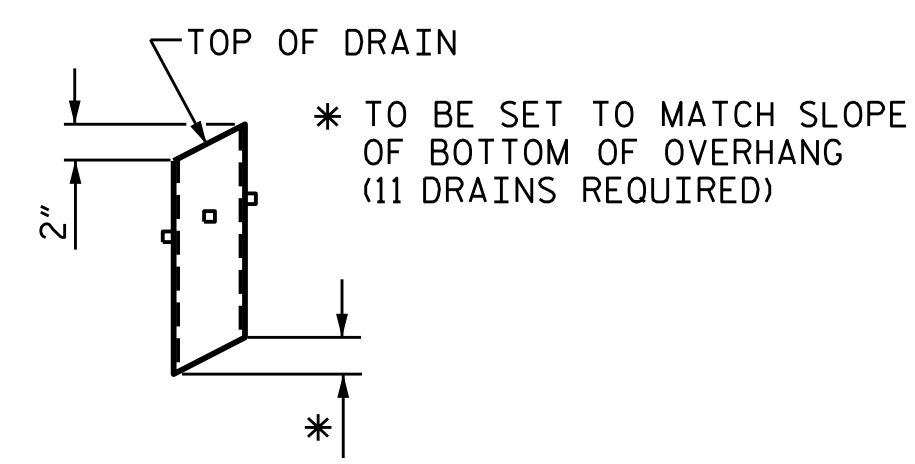
TYPICAL SECTION AT INTERMEDIATE DIAPHRAGM



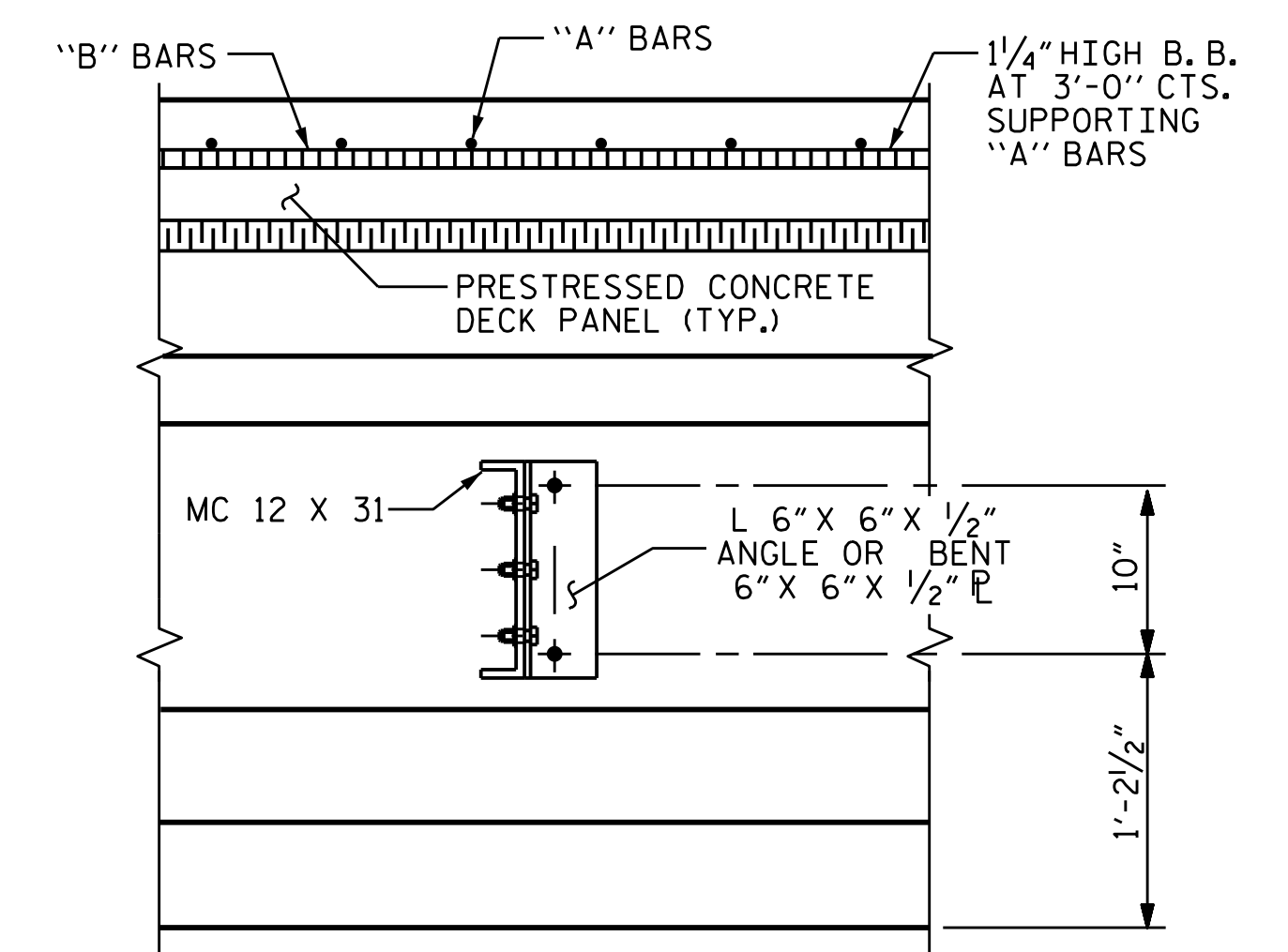
ELEVATION



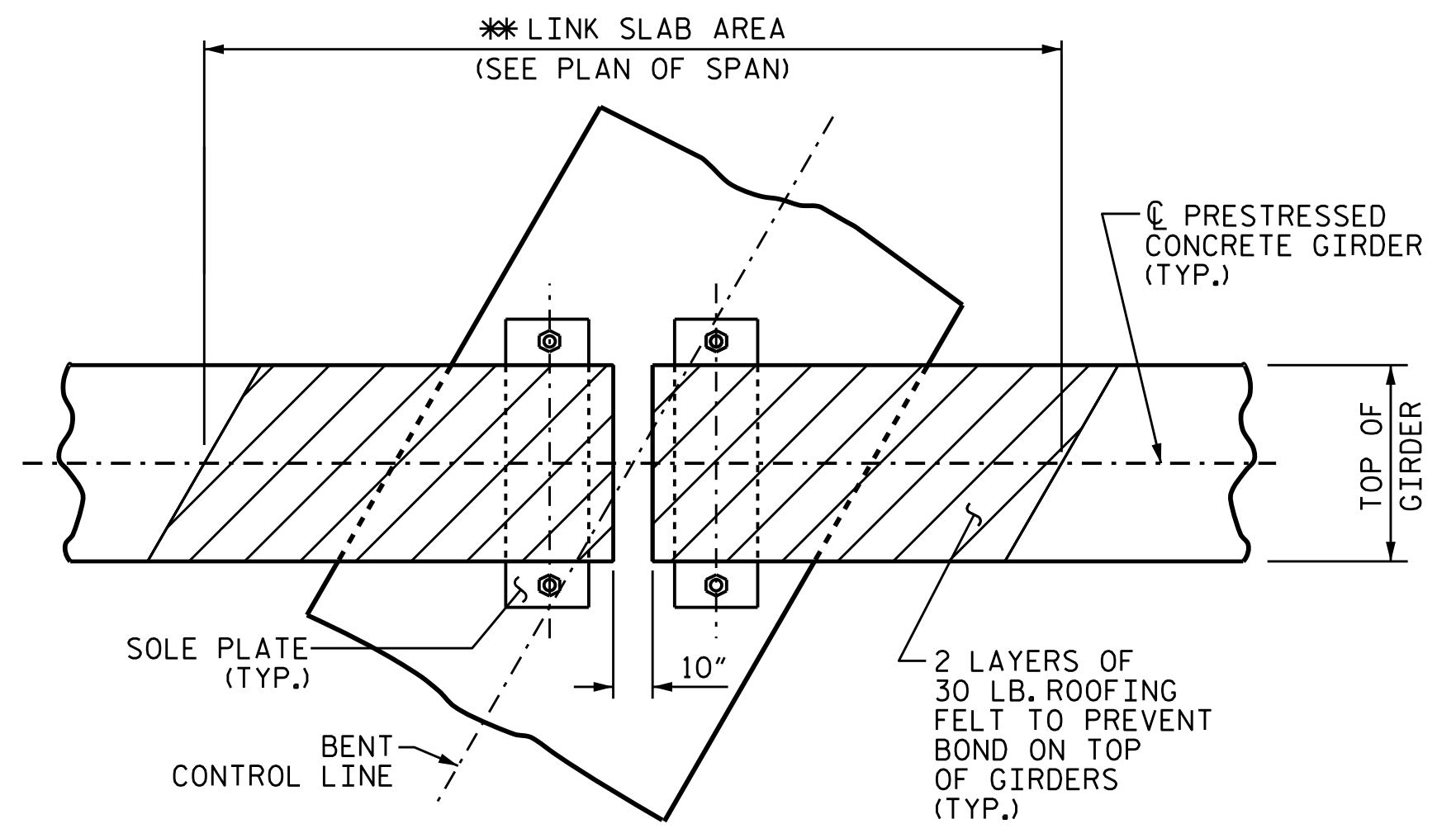
PLAN OF RECESS



PIPE DETAIL

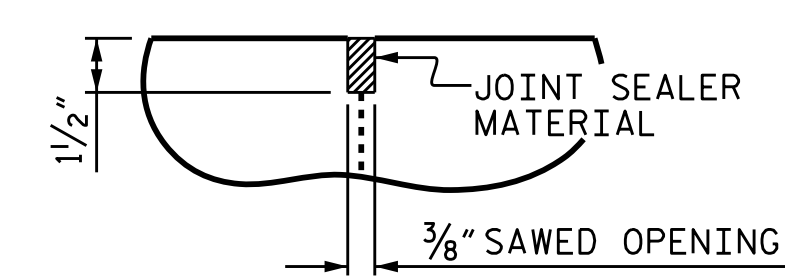


SECTION AT INTERMEDIATE DIAPHRAGM



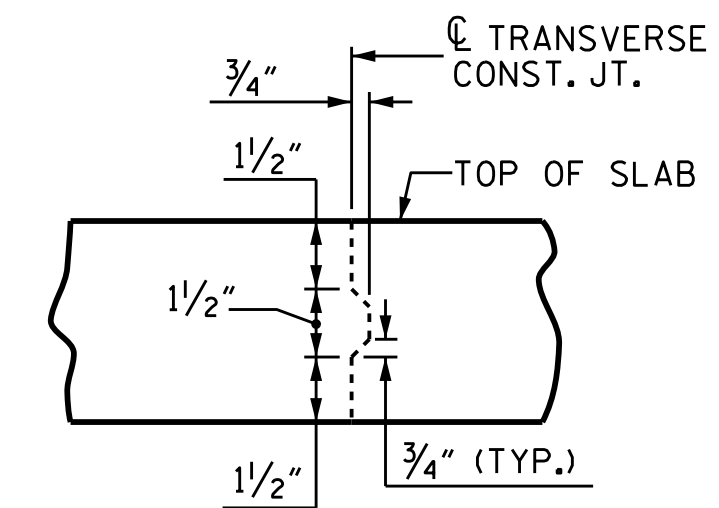
PLAN OF LINK SLAB

* THE TOP OF GIRDER IN THE REGION OF THE LINK SLAB SHALL BE SMOOTH (NOT RAKED) AND FREE OF STIRRUPS, DECK FORMWORK ATTACHMENTS, AND OVERHANG FALSEWORK/FORMWORK ATTACHMENTS.



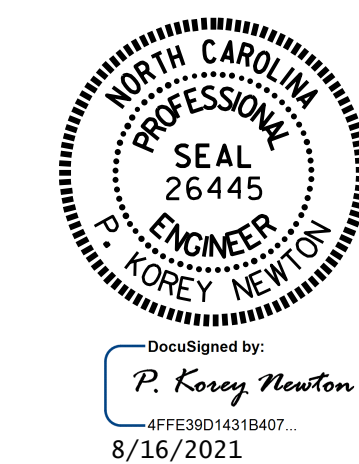
DETAIL "B"

A 1/2" DEEP, 3/8" WIDE CONTRACTION JOINT AT THE BENT CONTROL LINE SHALL BE SAWED WITHIN 24 HOURS OF POURING THE LINK SLAB DECK. THE JOINT SHALL BE FILLED WITH JOINT SEALER MATERIAL. THE JOINT SEALER MATERIAL SHALL CONFORM TO THE REQUIREMENTS OF SECTION 1028-3 OF THE STANDARD SPECIFICATIONS.



TRANSVERSE CONSTRUCTION JOINT DETAIL

NOTE: REINFORCING STEEL IN SLAB NOT SHOWN. LONGITUDINAL REINFORCING STEEL SHALL BE CONTINUOUS THRU JOINT



PROJECT NO. R-5021
BRUNSWICK COUNTY
STATION: 369+42.00 -L-

SHEET 2 OF 2

STATE OF NORTH CAROLINA
DEPARTMENT OF TRANSPORTATION
RALEIGH
SUPERSTRUCTURE
TYPICAL SECTION
(EBL)

REVISIONS						SHEET NO.
NO.	BY:	DATE:	NO.	BY:	DATE:	TOTAL SHEETS
1			3			S2-7
2			4			38

DRAWN BY: WFP / QTN / MKB DATE: 7/29/21
CHECKED BY: D.R. SHACKELFORD DATE: 8/11/21
DESIGN ENGINEER OF RECORD: P.K. NEWTON DATE: 8/12/21

DOCUMENT NOT CONSIDERED FINAL UNLESS ALL SIGNATURES COMPLETED