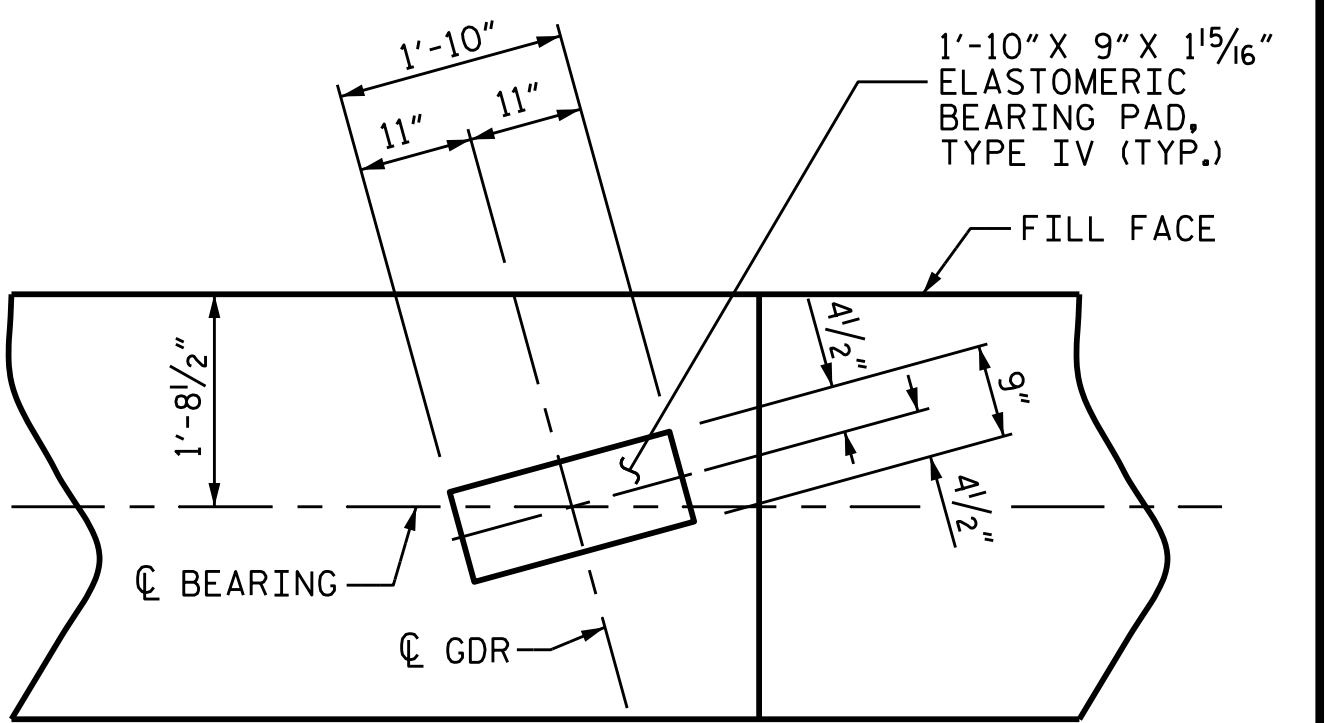
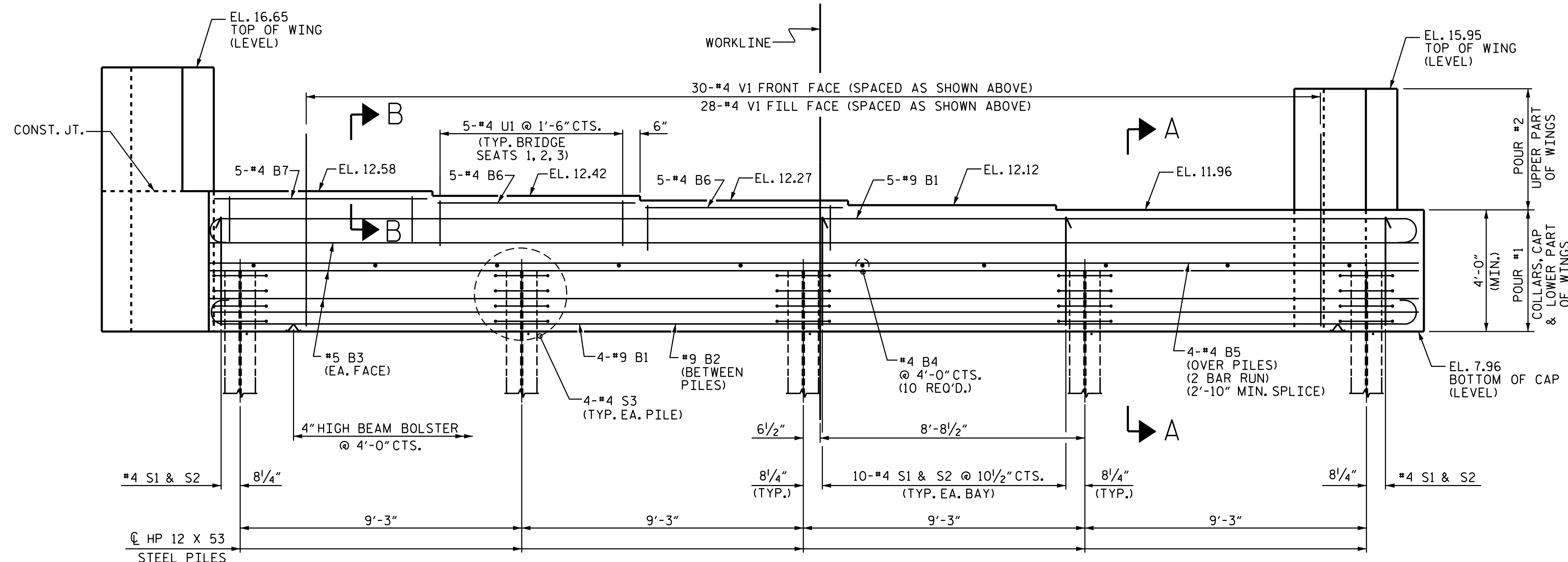


PLAN

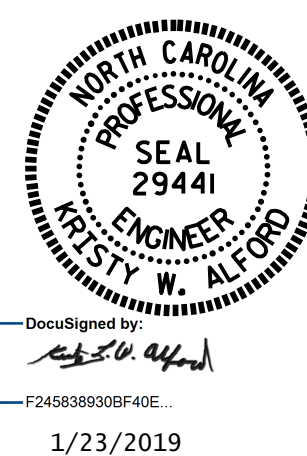


DETAIL "A"
(TYP. EA. GDR.)



ELEVATION

CONCRETE COLLARS FOR STEEL PILES NOT SHOWN IN PLAN AND ELEVATION VIEWS FOR CLARITY. SEE "CORROSION PROTECTION FOR STEEL PILES DETAIL", SHEET 3 OF 3.



1/23/2019

DOCUMENT NOT CONSIDERED FINAL UNLESS ALL SIGNATURES COMPLETED

STR. #1

NOTES

STIRRUPS IN CAP MAY BE SHIFTED AS NECESSARY TO CLEAR #4 V1 BARS.

THE TOP SURFACE OF THE END BENT CAP, EXCEPT THE BEARING AREA, SHALL BE RAKED TO A DEPTH OF 1/4".

AFTER DRIVING THE PILES APPLY 1 COAT EACH OF 1080-09 BROWN AND 1080-09 GRAY PAINT TO THE EMBEDDED SECTION OF THE METALLIZED PILE PRIOR TO CONCRETE EMBEDMENT IN ACCORDANCE WITH SECTION 442 OF THE STANDARD SPECIFICATIONS.

PRIOR TO BEGINNING METALLIZATION THE CONTRACTOR WILL PROVIDE METALLIZED SAMPLES TO THE ENGINEER FOR APPROVAL.

METALLIZE PILES IN ACCORDANCE WITH TABLE 2 OF THE DEPARTMENT'S THERMAL SPRAYED COATINGS (METALLIZATION) PROGRAM. FOR THERMAL SPRAYED COATINGS, SEE SPECIAL PROVISIONS.

PROJECT NO. R-5021
BRUNSWICK COUNTY
STATION: 369+42.00 -L-

SHEET 1 OF 3

STATE OF NORTH CAROLINA
DEPARTMENT OF TRANSPORTATION
RALEIGH
SUBSTRUCTURE
INTEGRAL END BENT 2
(WBL)

REVISIONS						SHEET NO.
NO.	BY:	DATE:	NO.	BY:	DATE:	S1-33
1			3			TOTAL SHEETS
2			4			38

DRAWN BY: O. T. NGUYEN DATE: 5/2/18
CHECKED BY: M. K. BEARD DATE: 8/18
DESIGN ENGINEER OF RECORD: A. K. PATEL DATE: 1/10/19