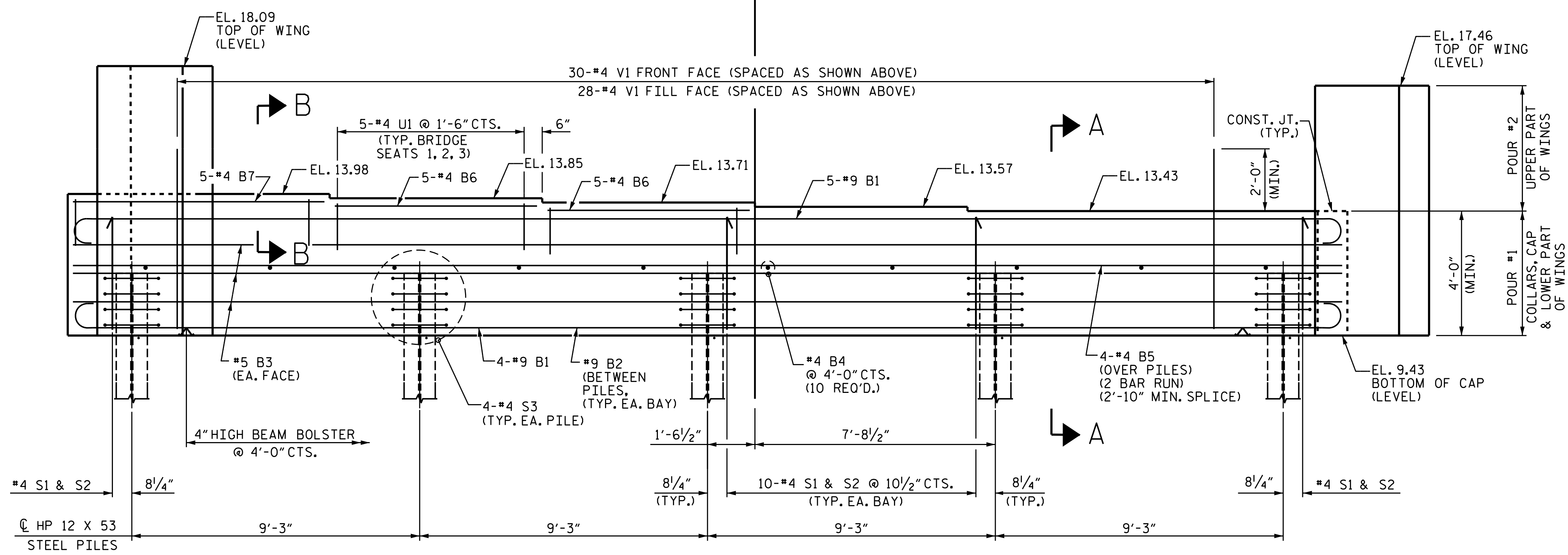


PLAN

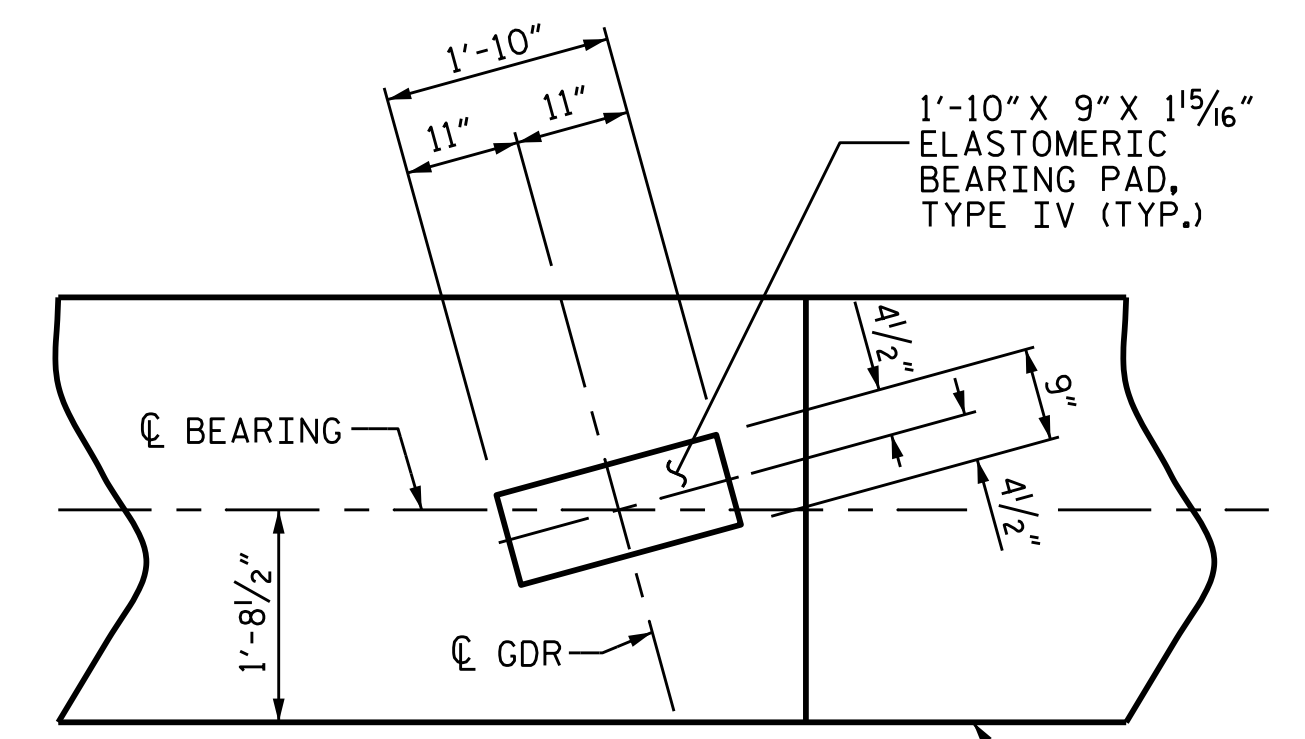


ELEVATION

CONCRETE COLLARS FOR STEEL PILES NOT SHOWN IN PLAN AND ELEVATION VIEWS FOR CLARITY. SEE "CORROSION PROTECTION FOR STEEL PILES DETAIL", SHEET 3 OF 3.

NOTES

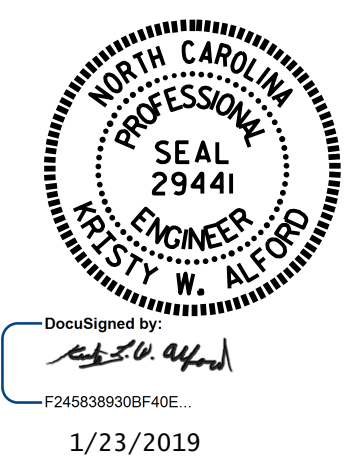
- STIRRUPS IN CAP MAY BE SHIFTED AS NECESSARY TO CLEAR #4 V1 BARS.
- THE TOP SURFACE OF THE END BENT CAP, EXCEPT THE BEARING AREA, SHALL BE RAKED TO A DEPTH OF 1/4".
- METALIZE PILES IN ACCORDANCE WITH TABLE 2 OF THE DEPARTMENTS THERMAL SPRAYED COATINGS (METALLIZATION) PROGRAM. FOR THERMAL SPRAYED COATINGS, SEE SPECIAL PROVISIONS.
- AFTER DRIVING THE PILES APPLY 1 COAT EACH OF 1080-09 BROWN AND 1080-09 GRAY PAINT TO THE EMBEDDED SECTION OF THE METALLIZED PILE PRIOR TO CONCRETE EMBEDMENT IN ACCORDANCE WITH SECTION 442 OF THE STANDARD SPECIFICATIONS.
- PRIOR TO BEGINNING METALLIZATION THE CONTRACTOR WILL PROVIDE METALLIZED SAMPLES TO THE ENGINEER FOR APPROVAL.



DETAIL "A"  
(TYP. EA. GDR.)

PROJECT NO. R-5021  
BRUNSWICK COUNTY  
STATION: 369+42.00 -L-

SHEET 1 OF 3



STATE OF NORTH CAROLINA  
DEPARTMENT OF TRANSPORTATION  
RALEIGH  
SUBSTRUCTURE  
INTEGRAL  
END BENT 1  
(WBL)

REVISIONS						SHEET NO.
NO.	BY:	DATE:	NO.	BY:	DATE:	S1-27
1			3			TOTAL SHEETS
2			4			38

DRAWN BY : O. T. NGUYEN DATE : 5/2/18  
CHECKED BY : M. K. BEARD DATE : 8/18  
DESIGN ENGINEER OF RECORD : A. K. PATEL DATE : 1/10/19

DOCUMENT NOT CONSIDERED FINAL UNLESS ALL SIGNATURES COMPLETED