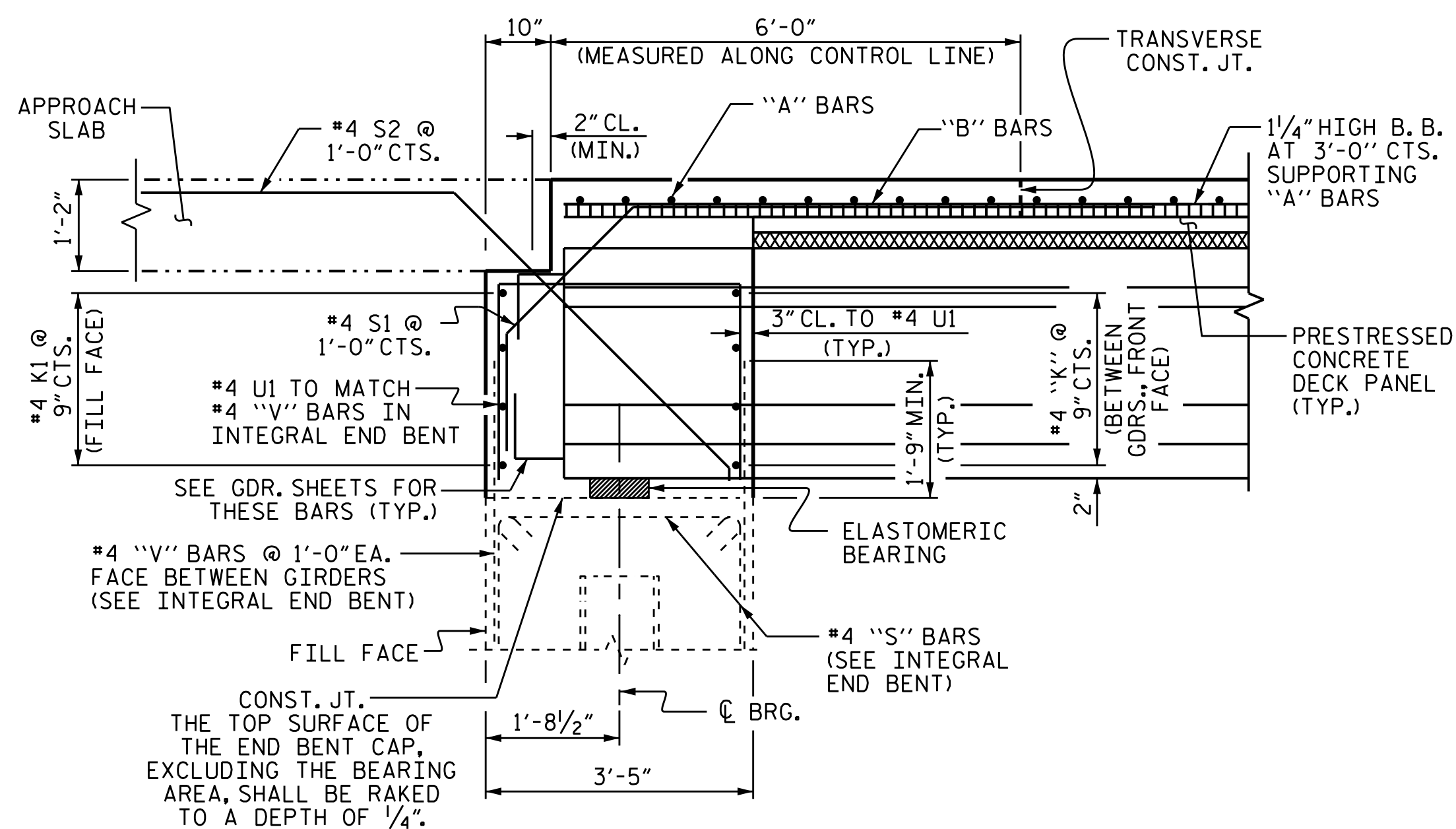
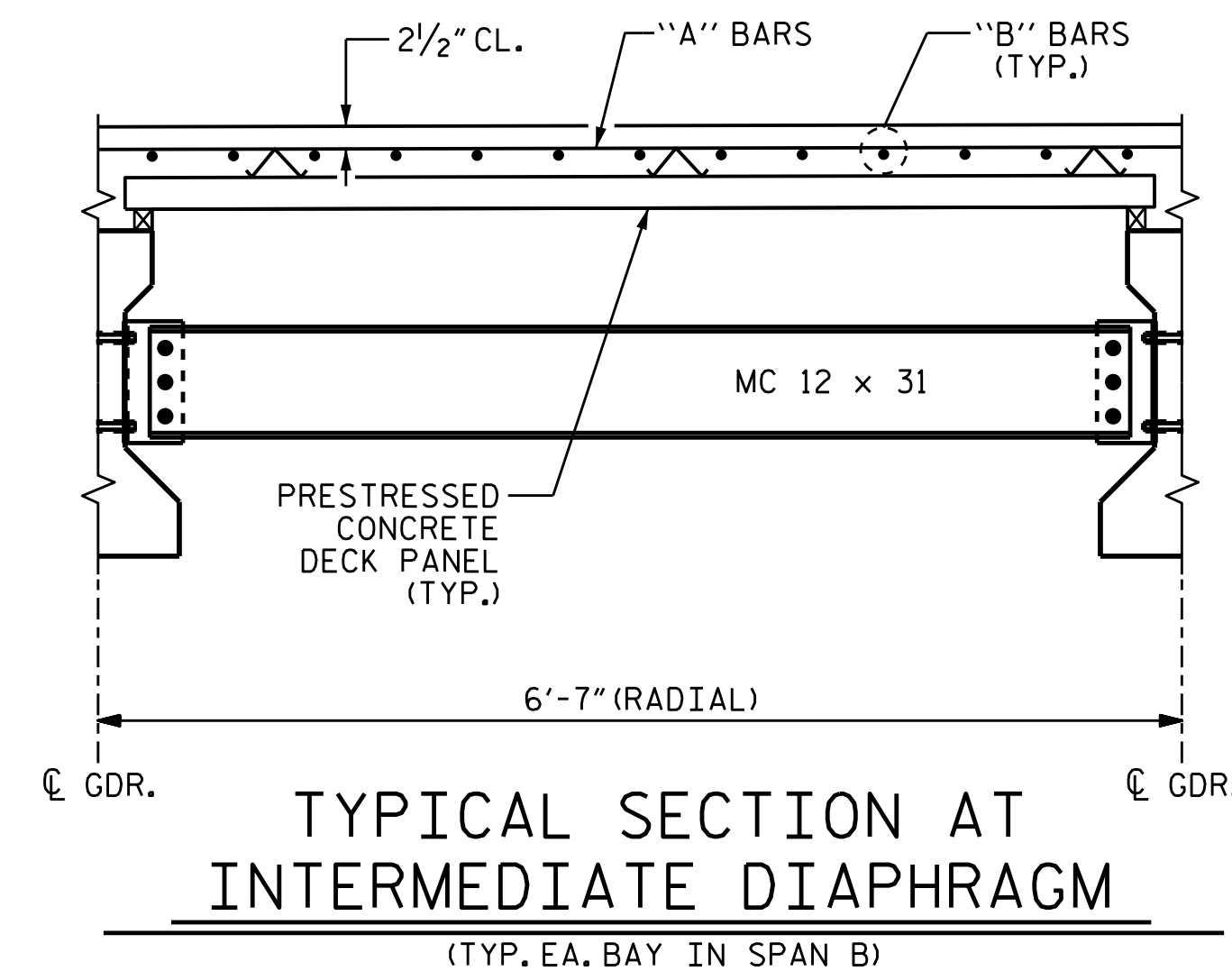


SECTION @ LINK SLAB

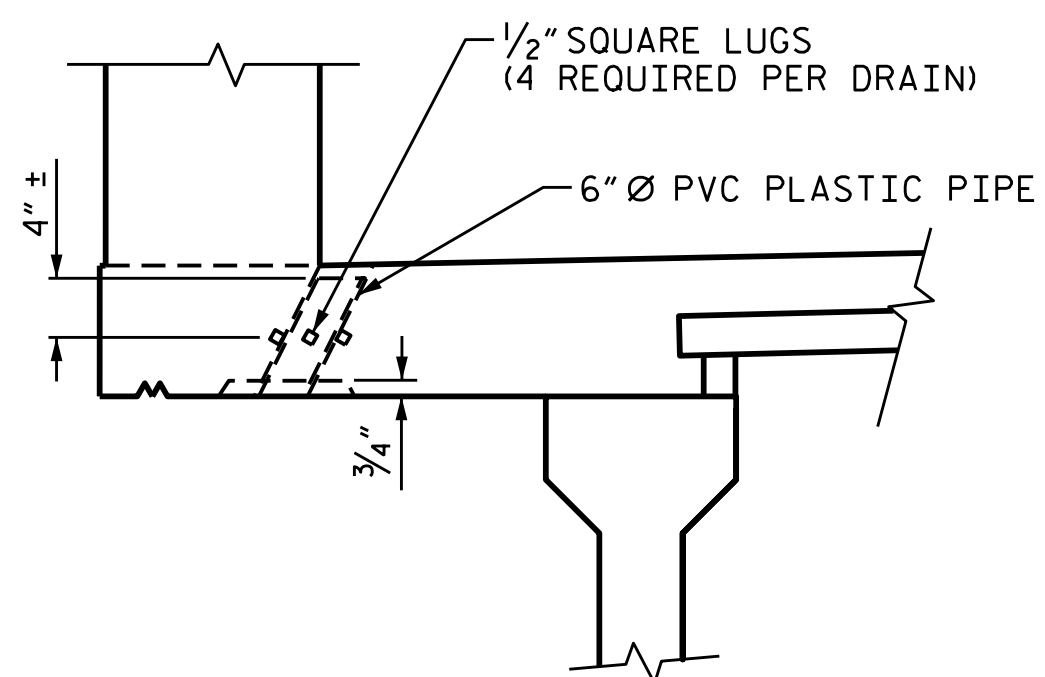


END OF GIRDER DETAIL AT INTEGRAL END BENT

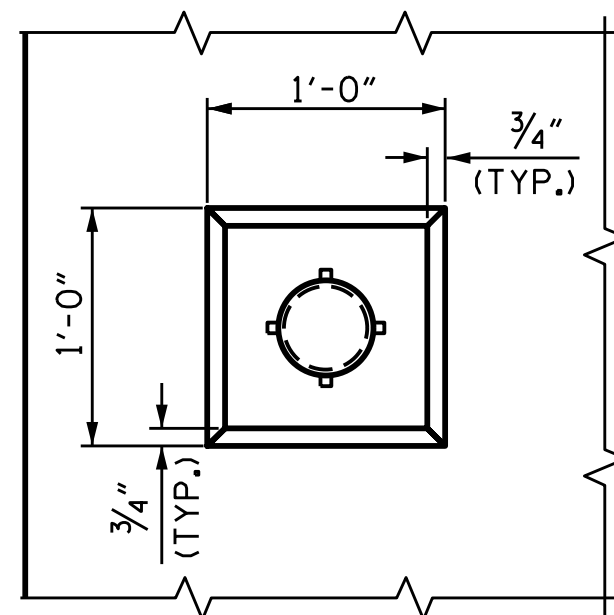


TYPICAL SECTION AT INTERMEDIATE DIAPHRAGM

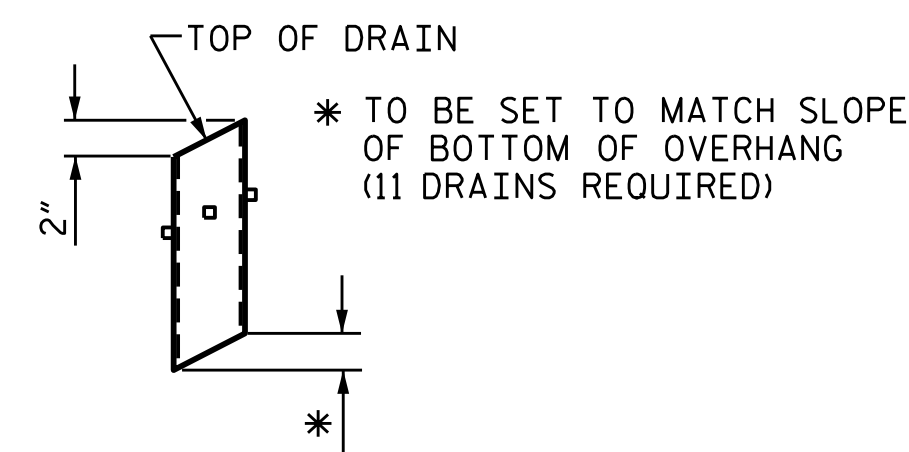
(TYP. EA. BAY IN SPAN B)



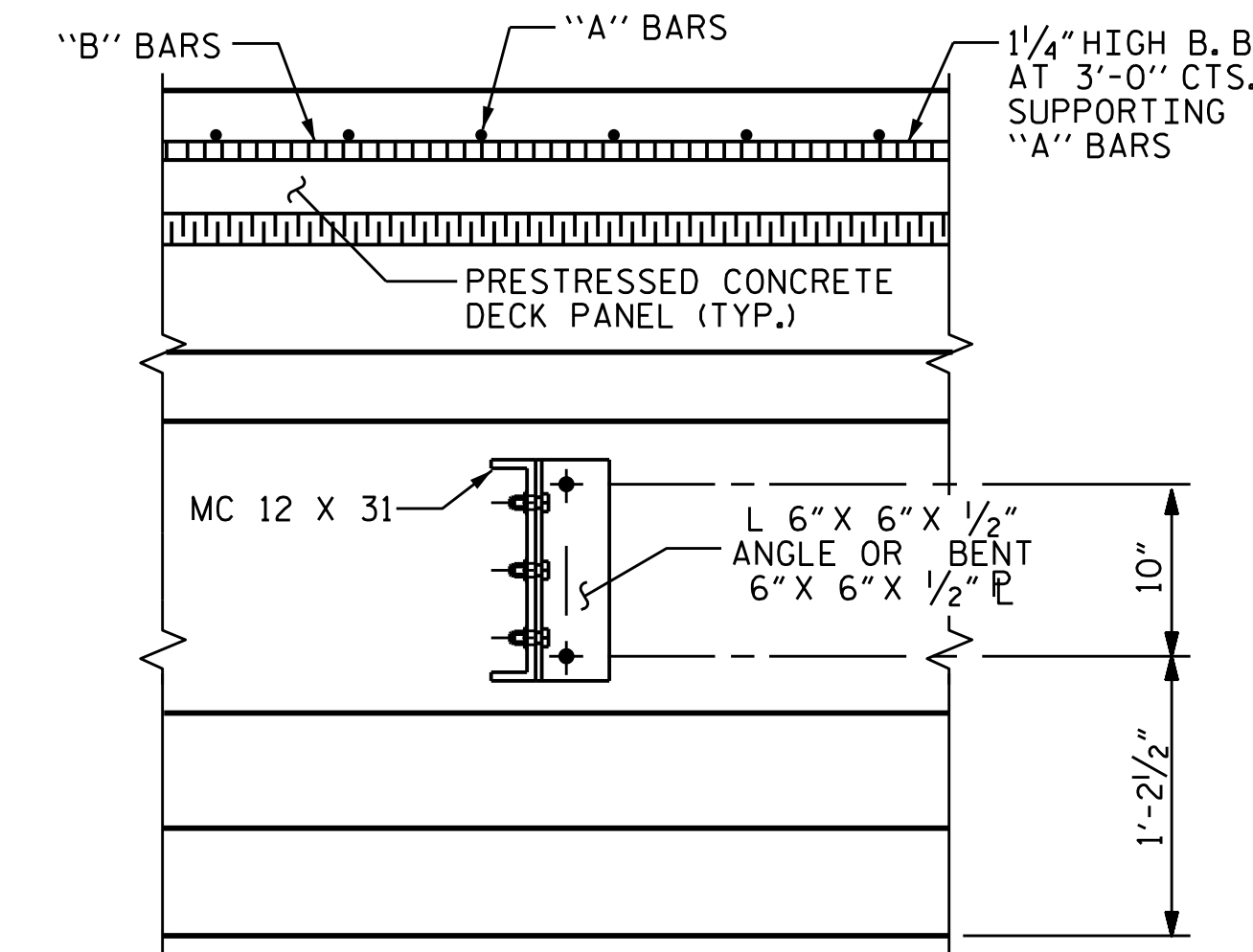
ELEVATION



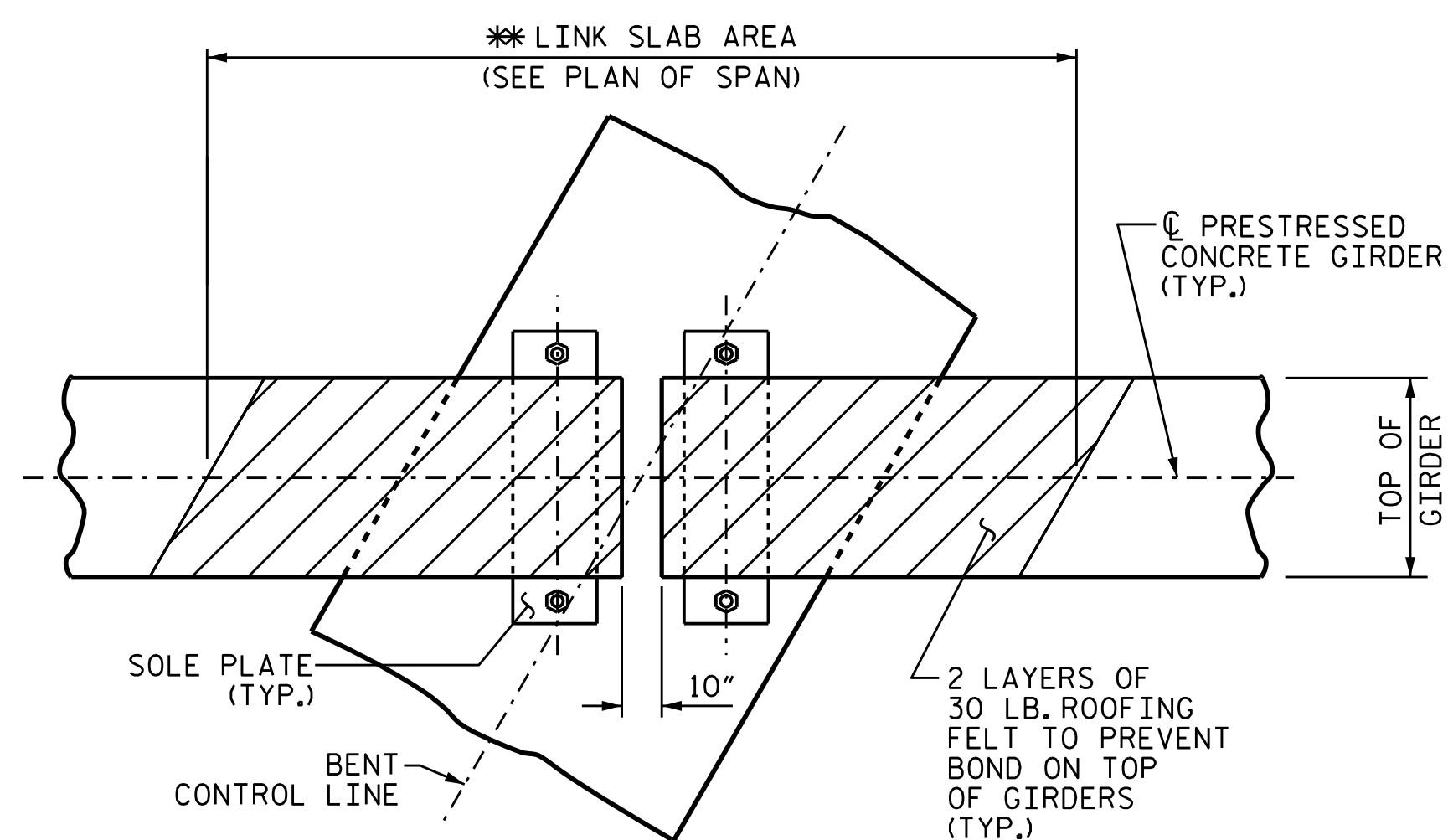
PLAN OF RECESS



PIPE DETAIL

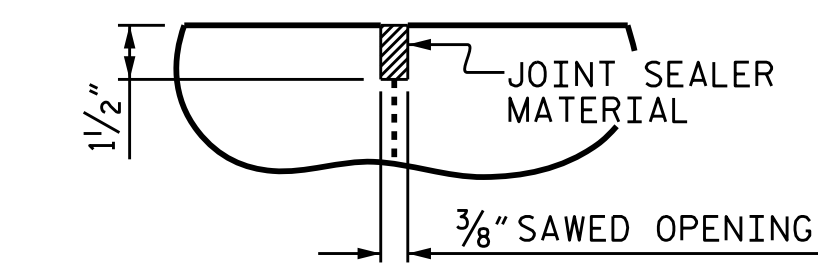


SECTION AT INTERMEDIATE DIAPHRAGM



PLAN OF LINK SLAB

* THE TOP OF GIRDER IN THE REGION OF THE LINK SLAB SHALL BE SMOOTH (NOT RAKED) AND FREE OF STIRRUPS, DECK FORMWORK ATTACHMENTS, AND OVERHANG FALSEWORK/FORMWORK ATTACHMENTS.

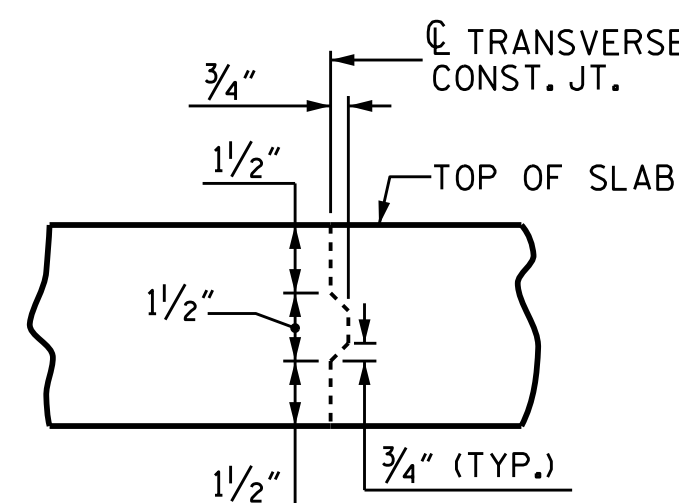


DETAIL "B"

A 1/2" DEEP, 3/8" WIDE CONTRACTION JOINT AT THE BENT CONTROL LINE SHALL BE SAWED WITHIN 24 HOURS OF POURING THE LINK SLAB DECK. THE JOINT SHALL BE FILLED WITH JOINT SEALER MATERIAL. THE JOINT SEALER MATERIAL SHALL CONFORM TO THE REQUIREMENTS OF SECTION 1028-3 OF THE STANDARD SPECIFICATIONS.

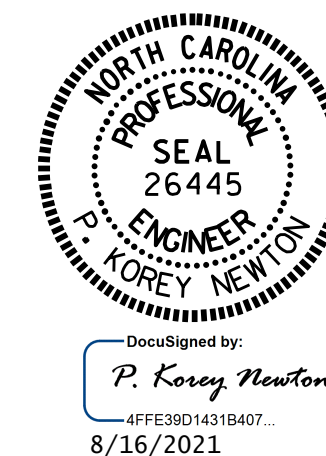
TOP OF FLOOR DRAINS TO BE SET 3/8" BELOW SURFACE OF SLAB.
 4 - 1/2" SQUARE LUGS TO BE GLUED TO THE P.V.C. PLASTIC PIPE AT EQUAL SPACES AROUND THE PIPE DRAIN APPROXIMATELY 4" FROM THE TOP OF THE PIPE.
 THE 6" Ø PVC PLASTIC PIPE AND FITTINGS SHALL BE SCHEDULE 40 AND CONFORM TO ASTM D1785.

DRAIN DETAILS



TRANSVERSE CONSTRUCTION JOINT DETAIL

NOTE: REINFORCING STEEL IN SLAB NOT SHOWN. LONGITUDINAL REINFORCING STEEL SHALL BE CONTINUOUS THRU JOINT



PROJECT NO. R-5021
 BRUNSWICK COUNTY
 STATION: 369+42.00 -L-

SHEET 2 OF 2

STATE OF NORTH CAROLINA
 DEPARTMENT OF TRANSPORTATION
 RALEIGH
 SUPERSTRUCTURE
 TYPICAL SECTION
 (WBL)

DRAWN BY: WFP / QTN / MKB DATE: 7/29/21
 CHECKED BY: D.R. SHACKELFORD DATE: 7/30/21
 DESIGN ENGINEER OF RECORD: P.K. NEWTON DATE: 8/2/21

DOCUMENT NOT CONSIDERED FINAL UNLESS ALL SIGNATURES COMPLETED

REVISIONS						SHEET NO.
NO.	BY:	DATE:	NO.	BY:	DATE:	S1-7
1			3			TOTAL SHEETS
2			4			38