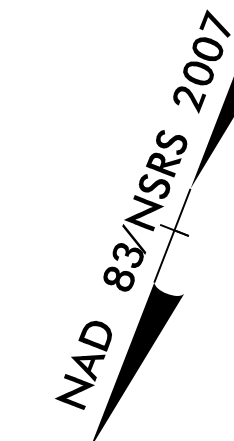
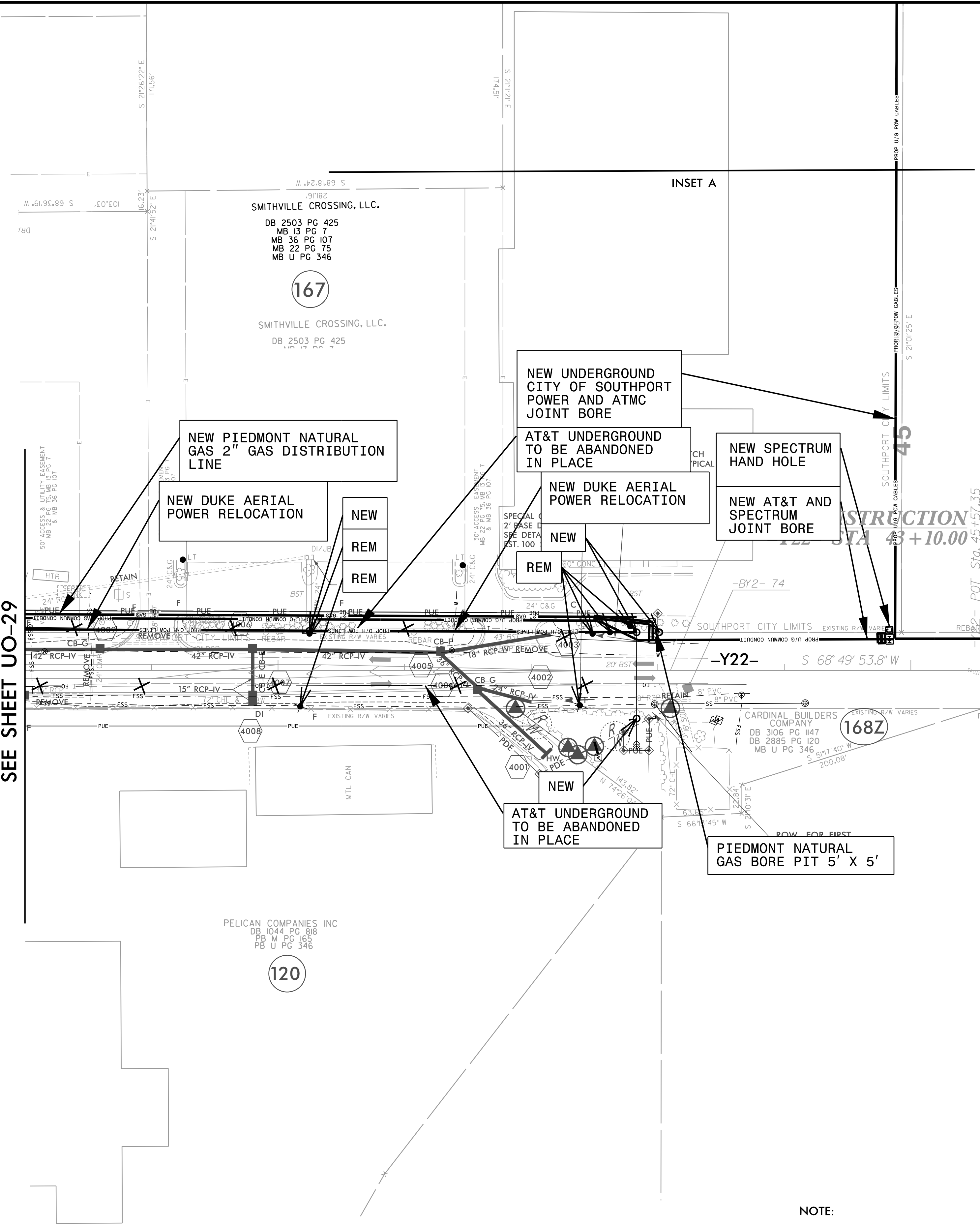


**UTILITIES BY OTHERS**

NOTE:  
 ALL UTILITY WORK SHOWN ON THIS SHEET WILL BE DONE BY OTHERS. NO PAYMENT WILL BE MADE TO THE CONTRACTOR FOR UTILITY WORK SHOWN ON THIS SHEET.

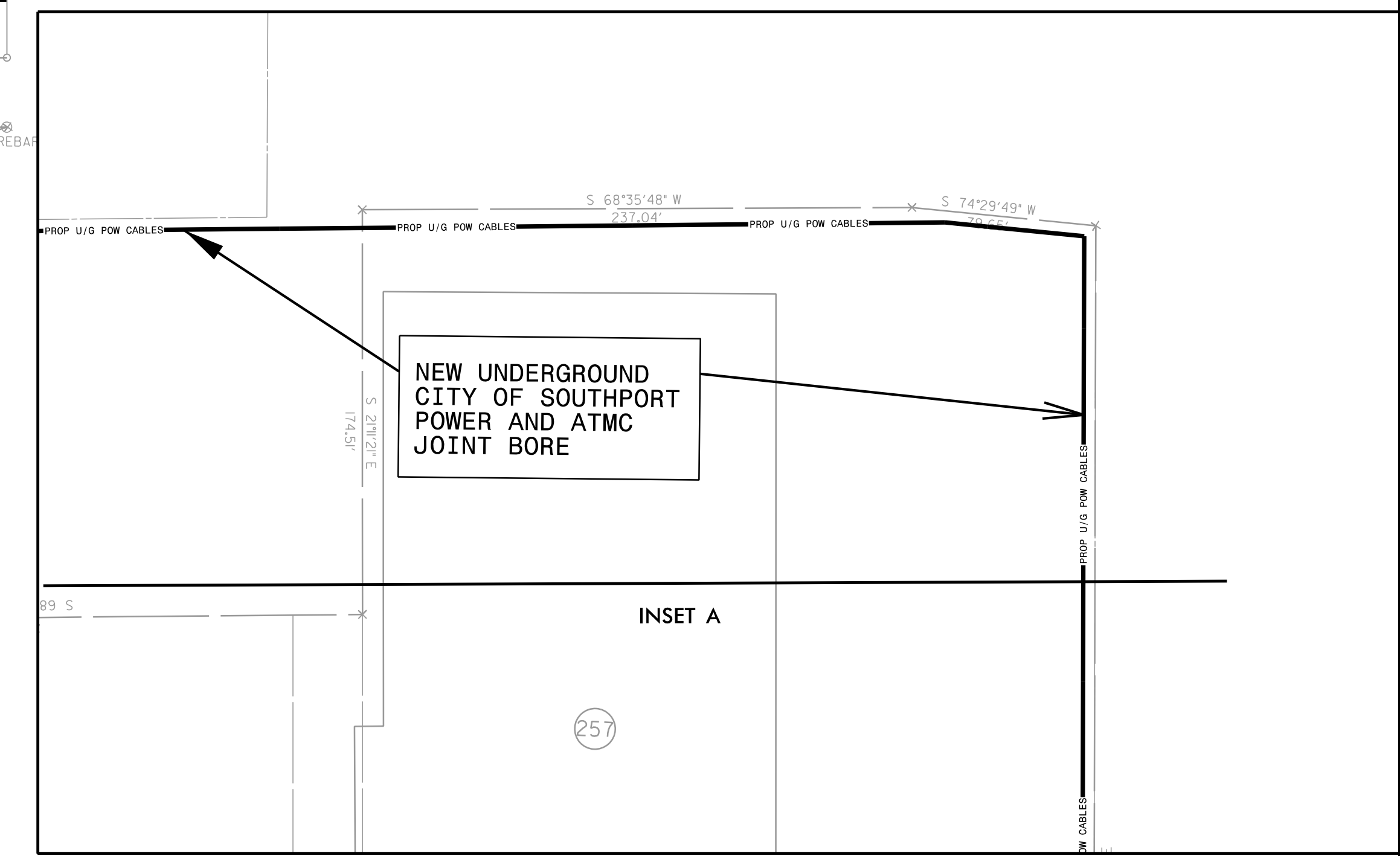


MATCH LINE -Y22- STA 38+00.00  
 SEE SHEET UO-29



RESTRICTION  
 STA 43+10.00

INSET A  
 1. PROPOSED CITY OF SOUTHPORT ROUTING IN THEIR OWN EASEMENT



NOTE:

1. PIEDMONT NATURAL GAS WILL OPEN TRENCH CUT ALL GAS LINE THAT IS LESS THAN 100', EXCEPT IN WETLAND AREAS

**UTILITY OWNERS ON THIS SHEET**

- DUKE ENERGY - POWER (DIST)
- CITY OF SOUTHPORT POWER - POWER (DIST)
- AT&T - TELECOMMUNICATIONS/FIBER OPTIC
- ATMC - TELECOMMUNICATIONS/FIBER OPTIC
- SPECTRUM - CATV
- PIEDMONT NATURAL GAS - NATURAL GAS

PLANS PREPARED BY :



5/14/2019  
 C:\Projects\2013\13\Utility\_Coordination\INGD001\001\_R-5021\Utility\_Coordination\INGD001\001\_R-5021\UO-38.dwg  
 5/14/2019  
 C:\Projects\2013\13\Utility\_Coordination\INGD001\001\_R-5021\UO-38.dwg