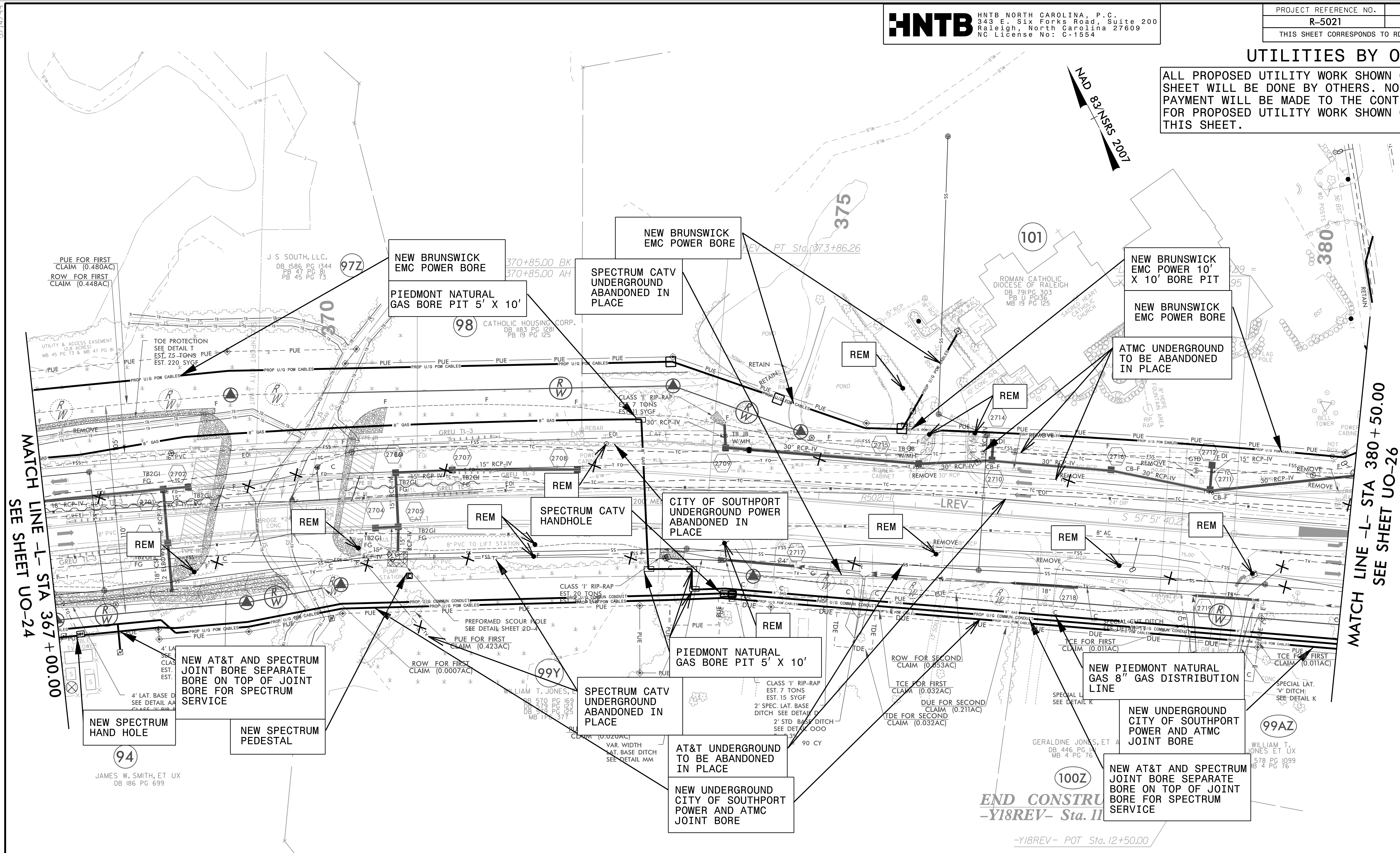
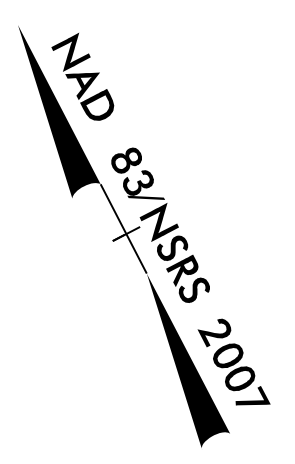


UTILITIES BY OTHERS

ALL PROPOSED UTILITY WORK SHOWN ON THIS SHEET WILL BE DONE BY OTHERS. NO PAYMENT WILL BE MADE TO THE CONTRACTOR FOR PROPOSED UTILITY WORK SHOWN ON THIS SHEET.



MATCH LINE -L- STA 367 + 00.00
SEE SHEET UO-24

MATCH LINE -L- STA 380 + 50.00
SEE SHEET UO-26

END CONSTRUCTION
 -Y18REV- Sta. 12+50.00

NOTE:
 1. PIEDMONT NATURAL GAS WILL OPEN TRENCH CUT ALL GAS LINE THAT IS LESS THAN 100', EXCEPT IN WETLAND AREAS

UTILITY OWNERS ON THIS SHEET

- BRUNSWICK EMC - POWER (DIST)
- CITY OF SOUTHPORT - POWER (DIST)
- AT&T - TELECOMMUNICATIONS/FIBER OPTIC
- AT&T - TELECOMMUNICATIONS/FIBER OPTIC
- SPECTRUM - CATV
- PIEDMONT NATURAL GAS - NATURAL GAS

PLANS PREPARED BY :
RK&K
 RUMMEL, KLEPPER & KAHL, LLP
 900 RIDGEFIELD DRIVE SUITE 350
 RALEIGH, NORTH CAROLINA 27609-3960
 NC LICENSE NO. F-0112 • (919) 878-9560

2/19/2019 10:51:00 AM C:\Projects\2013\131111_Utility_Coordination\NCD011\01_R-5021\N-5021\Utilities\Engineering\UBOs_Dry\00-R-5021\UBOs_Dry\00-R-5021\Uo-25.psh.dgn