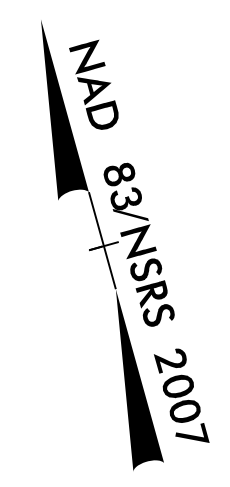


UTILITIES BY OTHERS

ALL PROPOSED UTILITY WORK SHOWN ON THIS SHEET WILL BE DONE BY OTHERS. NO PAYMENT WILL BE MADE TO THE CONTRACTOR FOR PROPOSED UTILITY WORK SHOWN ON THIS SHEET.



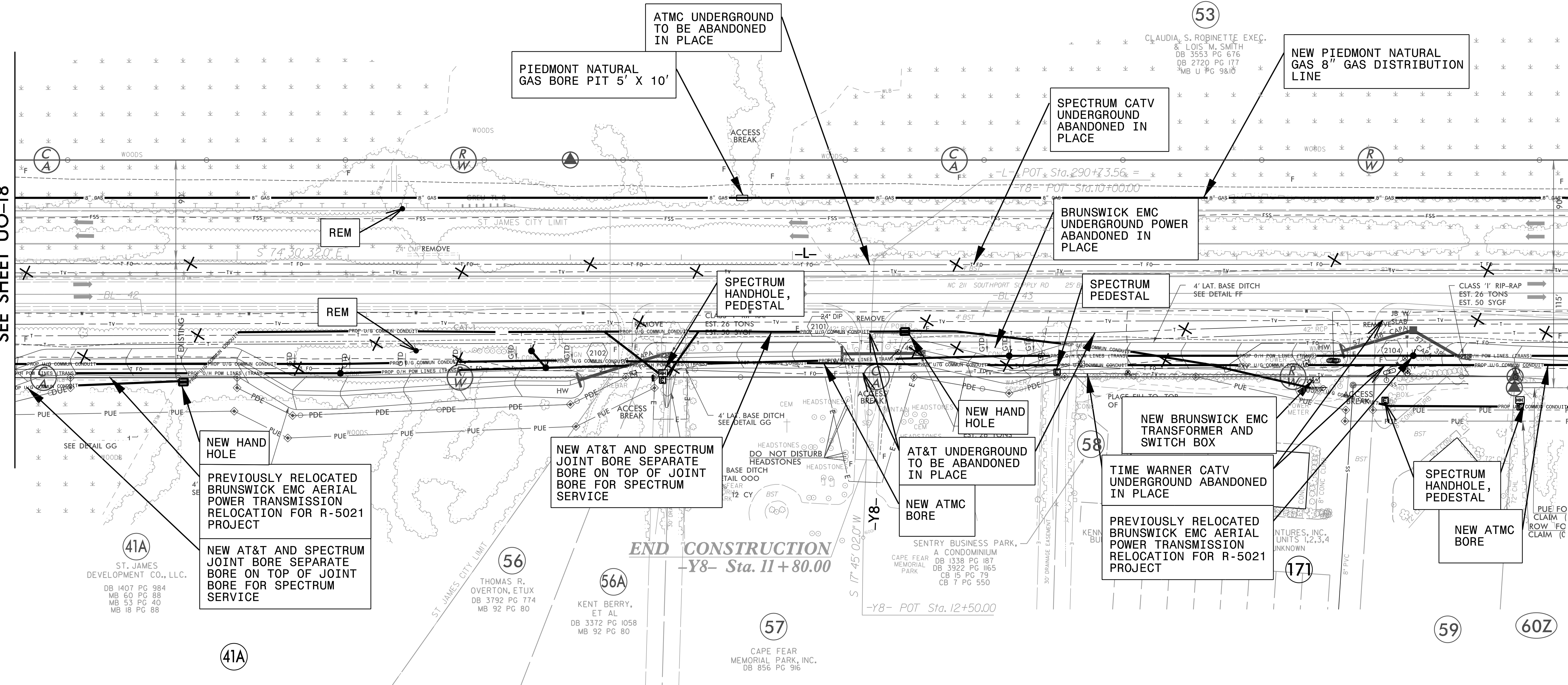
285

290

295

MATCH LINE -L- STA 283 + 00.00
SEE SHEET UO-18

MATCH LINE -L- STA 297 + 00.00
SEE SHEET UO-20



END CONSTRUCTION
 -Y8- Sta. 11 + 80.00

NOTE:

1. PIEDMONT NATURAL GAS WILL OPEN TRENCH CUT ALL GAS LINE THAT IS LESS THAN 100', EXCEPT IN WETLAND AREAS

UTILITY OWNERS ON THIS SHEET

- BRUNSWICK - POWER (TRANS)
- BRUNSWICK EMC - POWER (DIST)
- AT&T - TELECOMMUNICATIONS/FIBER OPTIC
- ATM - TELECOMMUNICATIONS/FIBER OPTIC
- SPECTRUM - CATV
- PIEDMONT NATURAL GAS - NATURAL GAS

PLANS PREPARED BY :



3/20/2019
 F:\projects\2013\13031\Utility_Coordination_(NCDOT)\001\R-5021\Utilities\Engineering\UO\00-R-5021\UBOs\Draw\ONL\YR-5021\ut_rdy21_UO19_psh.dgn
 5/14/99