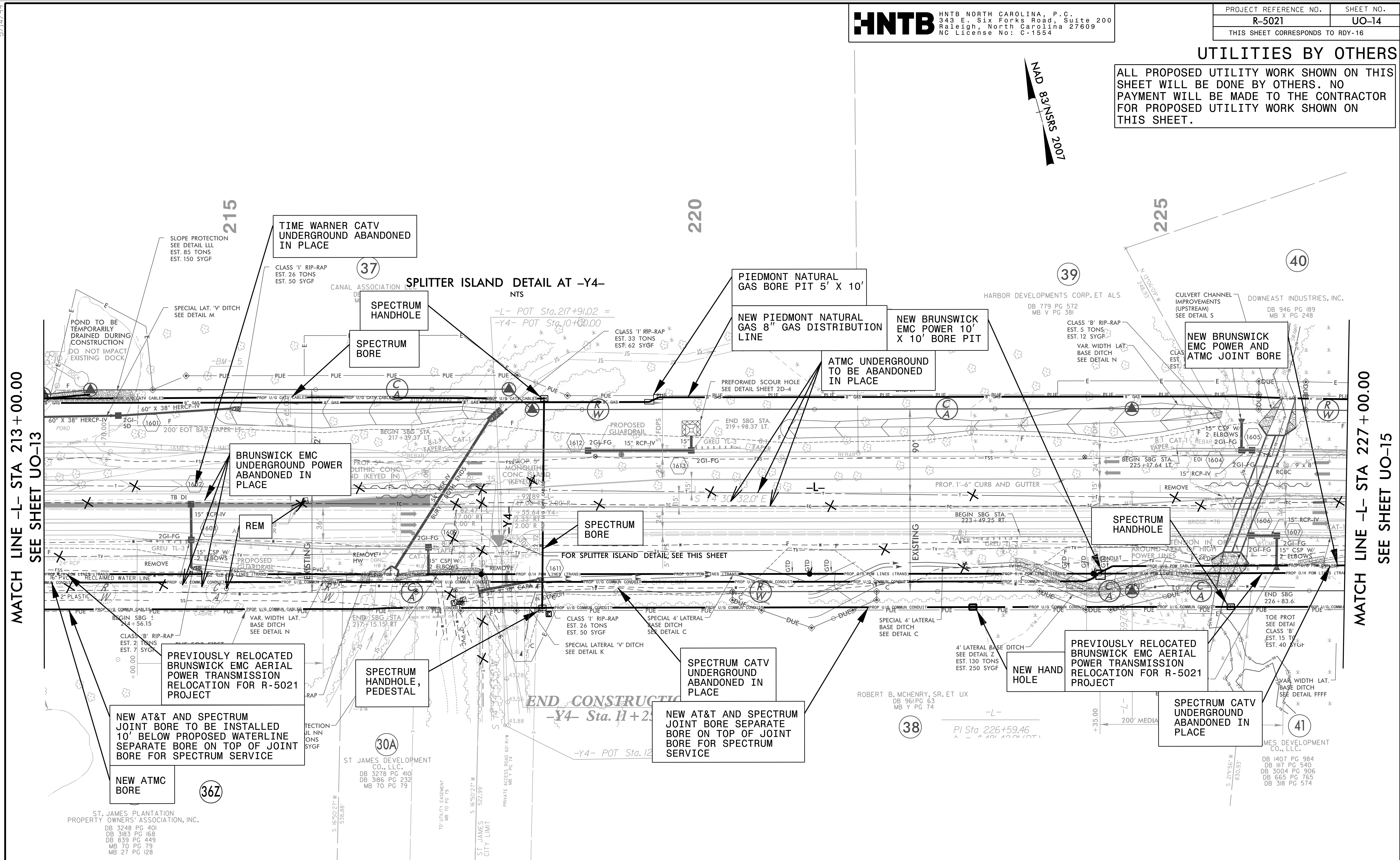
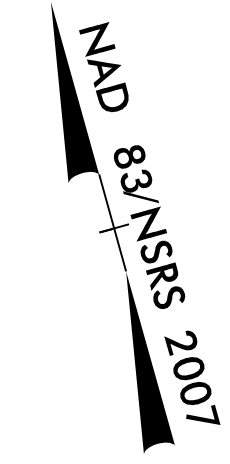


UTILITIES BY OTHERS

ALL PROPOSED UTILITY WORK SHOWN ON THIS SHEET WILL BE DONE BY OTHERS. NO PAYMENT WILL BE MADE TO THE CONTRACTOR FOR PROPOSED UTILITY WORK SHOWN ON THIS SHEET.



MATCH LINE -L- STA 213+00.00
SEE SHEET UO-13

MATCH LINE -L- STA 227+00.00
SEE SHEET UO-15

NOTE:
 1. PIEDMONT NATURAL GAS WILL OPEN TRENCH CUT ALL GAS LINE THAT IS LESS THAN 100', EXCEPT IN WETLAND AREAS

UTILITY OWNERS ON THIS SHEET
BRUNSWICK - POWER (TRANS)
BRUNSWICK EMC - POWER (DIST)
AT&T - TELECOMMUNICATIONS/FIBER OPTIC
AT&M - TELECOMMUNICATIONS/FIBER OPTIC
SPECTRUM - CATV
PIEDMONT NATURAL GAS - NATURAL GAS

PLANS PREPARED BY:
RK&K
 RUMMEL KLEPPER & KAHL, LLP
 900 RIDGEFIELD DRIVE SUITE 350
 RALEIGH, NORTH CAROLINA 27609-3960
 NC LICENSE NO. F-0112 • (919) 878-9560

5/14/2016 10:02:19 AM C:\Users\jacob.s\Documents\2013\3111\Utility_Coordination\001-R-5021\Drawings\Engineering\UBO\Pro\00-R-5021\UBO05-Dry_0NL_X-R-5021\Uo-14.dwg 10:04 psh.dgn