

PLANS PREPARED BY :



RUMMEL, KLEPPER & KAHL, LLP
900 RIDGEFIELD DRIVE SUITE 350
RALEIGH, NORTH CAROLINA 27609-3960
NC LICENSE NO. F-0112 • (919) 878-9560

UTILITY OWNERS ON THIS SHEET

BRUNSWICK - POWER (TRANS)
BRUNSWICK EMC - POWER (DIST)
AT&T - TELECOMMUNICATIONS/FIBER OPTIC
ATMC - TELECOMMUNICATIONS/FIBER OPTIC
SPECTRUM - CATV
PIEDMONT NATURAL GAS - NATURAL GAS



HNTB NORTH CAROLINA, P.C.
343 E Six Forks Road, Suite 200
Raleigh, North Carolina 27609
NC License No: C-1554

PROJECT REFERENCE NO. SHEET NO.

R-5021 UO-13

THIS SHEET CORRESPONDS TO RDY-15

UTILITIES BY OTHERS

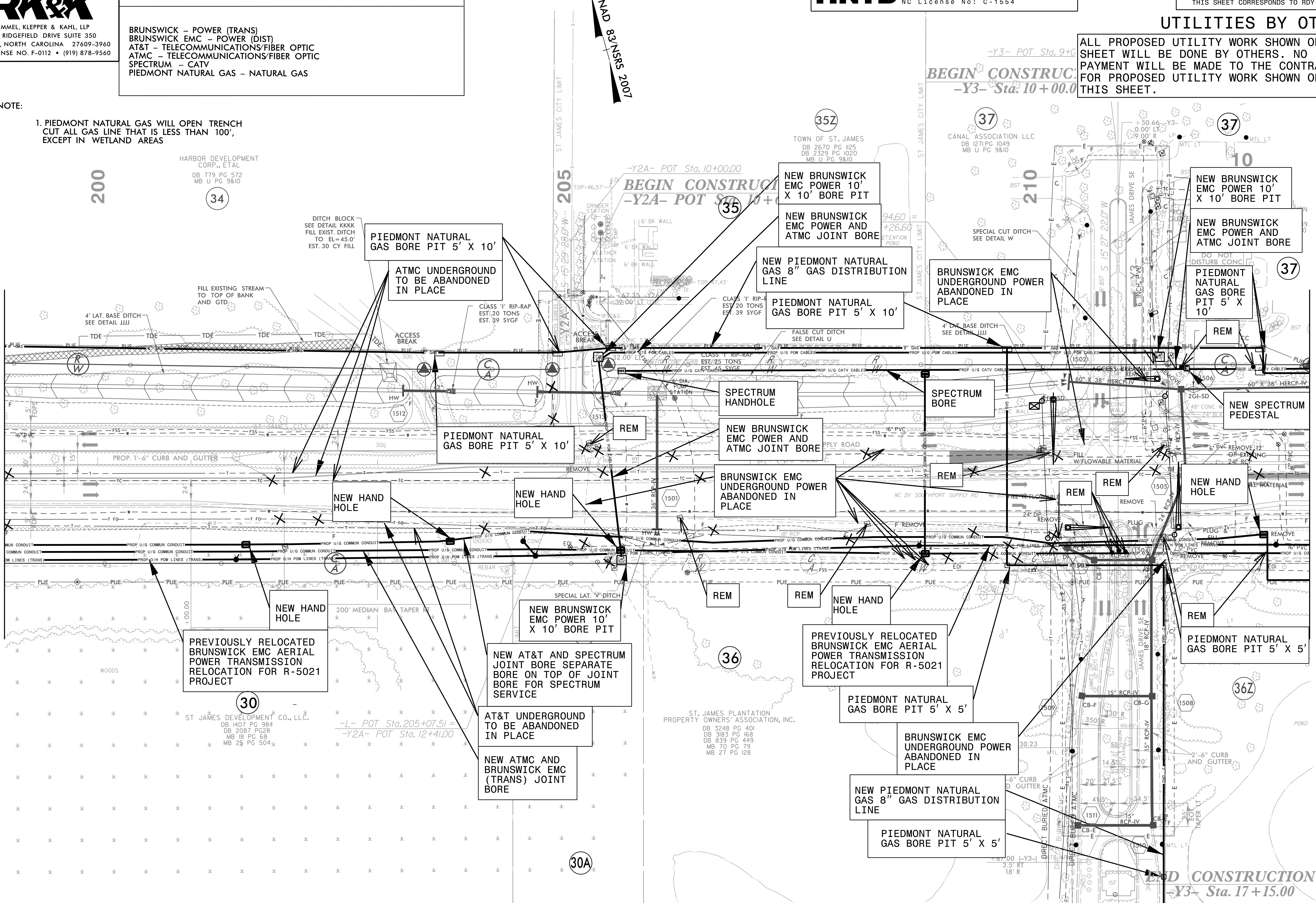
ALL PROPOSED UTILITY WORK SHOWN ON THIS SHEET WILL BE DONE BY OTHERS. NO PAYMENT WILL BE MADE TO THE CONTRACTOR FOR PROPOSED UTILITY WORK SHOWN ON THIS SHEET.

NOTE:

1. PIEDMONT NATURAL GAS WILL OPEN TRENCH CUT ALL GAS LINE THAT IS LESS THAN 100', EXCEPT IN WETLAND AREAS

MATCH LINE -L- STA 199+00.00
SEE SHEET UO-12

MATCH LINE -L- STA 213+00.00
SEE SHEET UO-14



200

HARBOR DEVELOPMENT CORP., ETAL
DB 779 PG 572
MB U PG 9&10

34

DITCH BLOCK SEE DETAIL KKKK
FILL EXIST. DITCH TO EL=45.0'
EST. 30 CY FILL

PIEDMONT NATURAL GAS BORE PIT 5' X 10'

ATMC UNDERGROUND TO BE ABANDONED IN PLACE

PIEDMONT NATURAL GAS BORE PIT 5' X 10'

NEW HAND HOLE

NEW HAND HOLE

PREVIOUSLY RELOCATED BRUNSWICK EMC AERIAL POWER TRANSMISSION RELOCATION FOR R-5021 PROJECT

30

ST JAMES DEVELOPMENT CO., LLC.
DB 1407 PG 984
DB 2087 PG 228
MB 18 PG 68
MB 25 PG 504

-L- POT Sta. 205+07.51 =
-Y2A- POT Sta. 12+41.00

AT&T UNDERGROUND TO BE ABANDONED IN PLACE

NEW ATMC AND BRUNSWICK EMC (TRANS) JOINT BORE

30A

BEGIN CONSTRUCTION
-Y2A- POT Sta. 10+00.00

35

NEW BRUNSWICK EMC POWER 10' X 10' BORE PIT

NEW BRUNSWICK EMC POWER AND ATMC JOINT BORE

NEW PIEDMONT NATURAL GAS 8" GAS DISTRIBUTION LINE

PIEDMONT NATURAL GAS BORE PIT 5' X 10'

SPECTRUM HANDHOLE

NEW BRUNSWICK EMC POWER AND ATMC JOINT BORE

BRUNSWICK EMC UNDERGROUND POWER ABANDONED IN PLACE

36

ST. JAMES PLANTATION PROPERTY OWNERS' ASSOCIATION, INC.
DB 3248 PG 401
DB 3183 PG 168
DB 839 PG 449
MB 70 PG 79
MB 27 PG 128

PREVIOUSLY RELOCATED BRUNSWICK EMC AERIAL POWER TRANSMISSION RELOCATION FOR R-5021 PROJECT

PIEDMONT NATURAL GAS BORE PIT 5' X 5'

BRUNSWICK EMC UNDERGROUND POWER ABANDONED IN PLACE

NEW PIEDMONT NATURAL GAS 8" GAS DISTRIBUTION LINE

PIEDMONT NATURAL GAS BORE PIT 5' X 5'

BEGIN CONSTRUCTION
-Y3- Sta. 10+00.00

37

CANAL ASSOCIATION LLC
DB 1271 PG 1049
MB U PG 9&10

NEW BRUNSWICK EMC POWER 10' X 10' BORE PIT

NEW BRUNSWICK EMC POWER AND ATMC JOINT BORE

PIEDMONT NATURAL GAS BORE PIT 5' X 10'

37

NEW SPECTRUM PEDESTAL

NEW HAND HOLE

PIEDMONT NATURAL GAS BORE PIT 5' X 5'

36Z

END CONSTRUCTION
-Y3- Sta. 17+15.00

5/14/2019
C:\p01-sr-v02\Projects\2013\13\Utility_Coordination_(NCD01)\D01_R-5021\AR-5021\Utilities\Engineering\UBO\Pro\00-R-5021\UBOs_Dr-Y-ONL-Y-R-5021\UT_rdy15_U013_psh.dgn
2/18/2019
C:\p01-sr-v02\Projects\2013\13\Utility_Coordination_(NCD01)\D01_R-5021\AR-5021\Utilities\Engineering\UBO\Pro\00-R-5021\UBOs_Dr-Y-ONL-Y-R-5021\UT_rdy15_U013_psh.dgn
mlawson