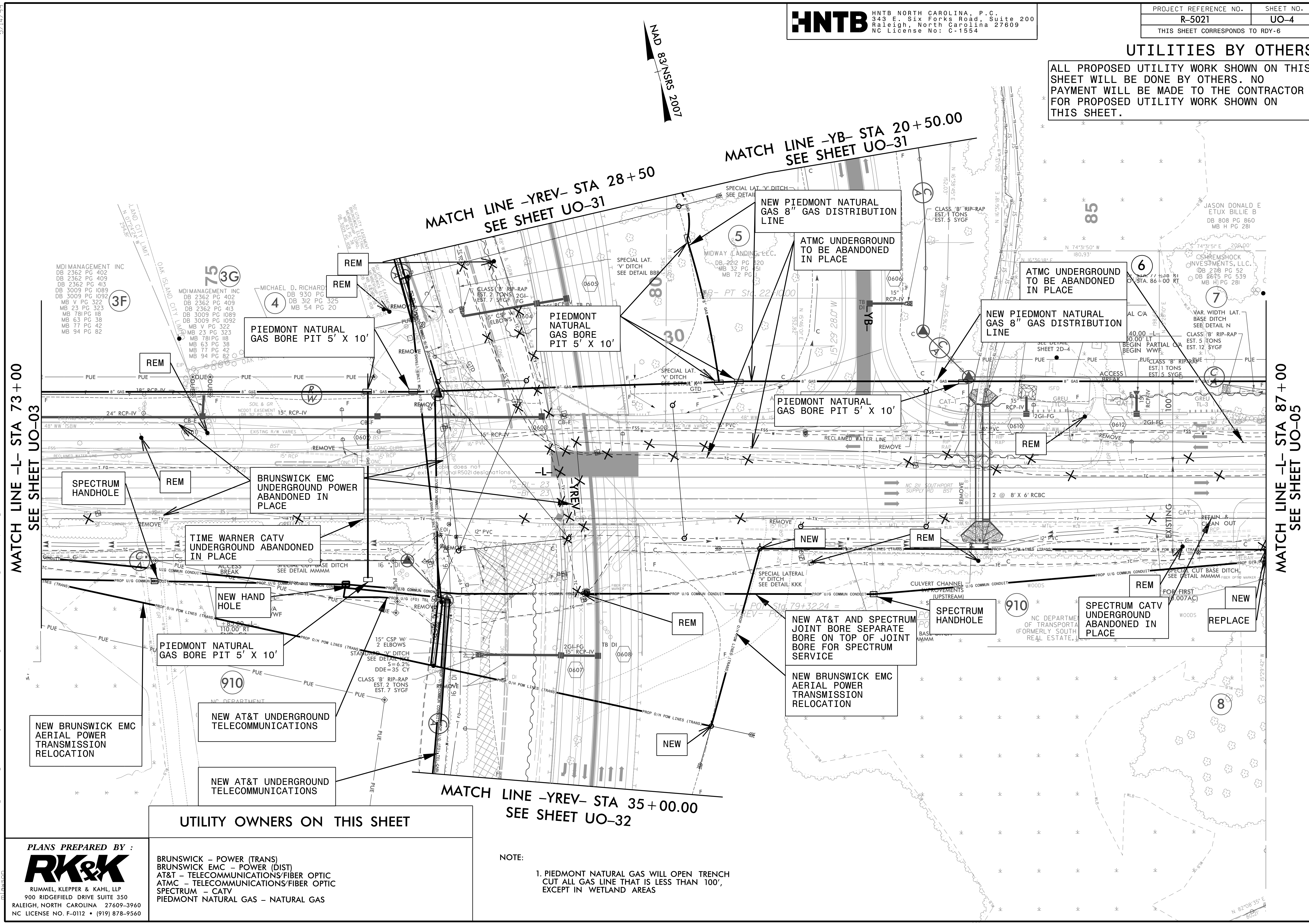
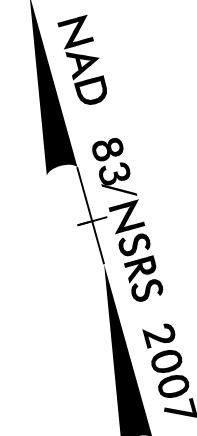


UTILITIES BY OTHERS

ALL PROPOSED UTILITY WORK SHOWN ON THIS SHEET WILL BE DONE BY OTHERS. NO PAYMENT WILL BE MADE TO THE CONTRACTOR FOR PROPOSED UTILITY WORK SHOWN ON THIS SHEET.



MATCH LINE -L- STA 73+00
SEE SHEET UO-03

MATCH LINE -L- STA 87+00
SEE SHEET UO-05

MATCH LINE -YB- STA 20+50.00
SEE SHEET UO-31

MATCH LINE -YREV- STA 28+50
SEE SHEET UO-31

MATCH LINE -YREV- STA 35+00.00
SEE SHEET UO-32

UTILITY OWNERS ON THIS SHEET

PLANS PREPARED BY:
RK&K
 RUMMEL, KLEPPER & KAHL, LLP
 900 RIDGEFIELD DRIVE SUITE 350
 RALEIGH, NORTH CAROLINA 27609-3960
 NC LICENSE NO. F-0112 • (919) 878-9560

BRUNSWICK - POWER (TRANS)
 BRUNSWICK EMC - POWER (DIST)
 AT&T - TELECOMMUNICATIONS/FIBER OPTIC
 AT&M - TELECOMMUNICATIONS/FIBER OPTIC
 SPECTRUM - CATV
 PIEDMONT NATURAL GAS - NATURAL GAS

NOTE:
 1. PIEDMONT NATURAL GAS WILL OPEN TRENCH CUT ALL GAS LINE THAT IS LESS THAN 100', EXCEPT IN WETLAND AREAS

5/14/2009 10:00 AM C:\Users\jrh\Documents\Projects\5021\UO-04\UO-04.dwg