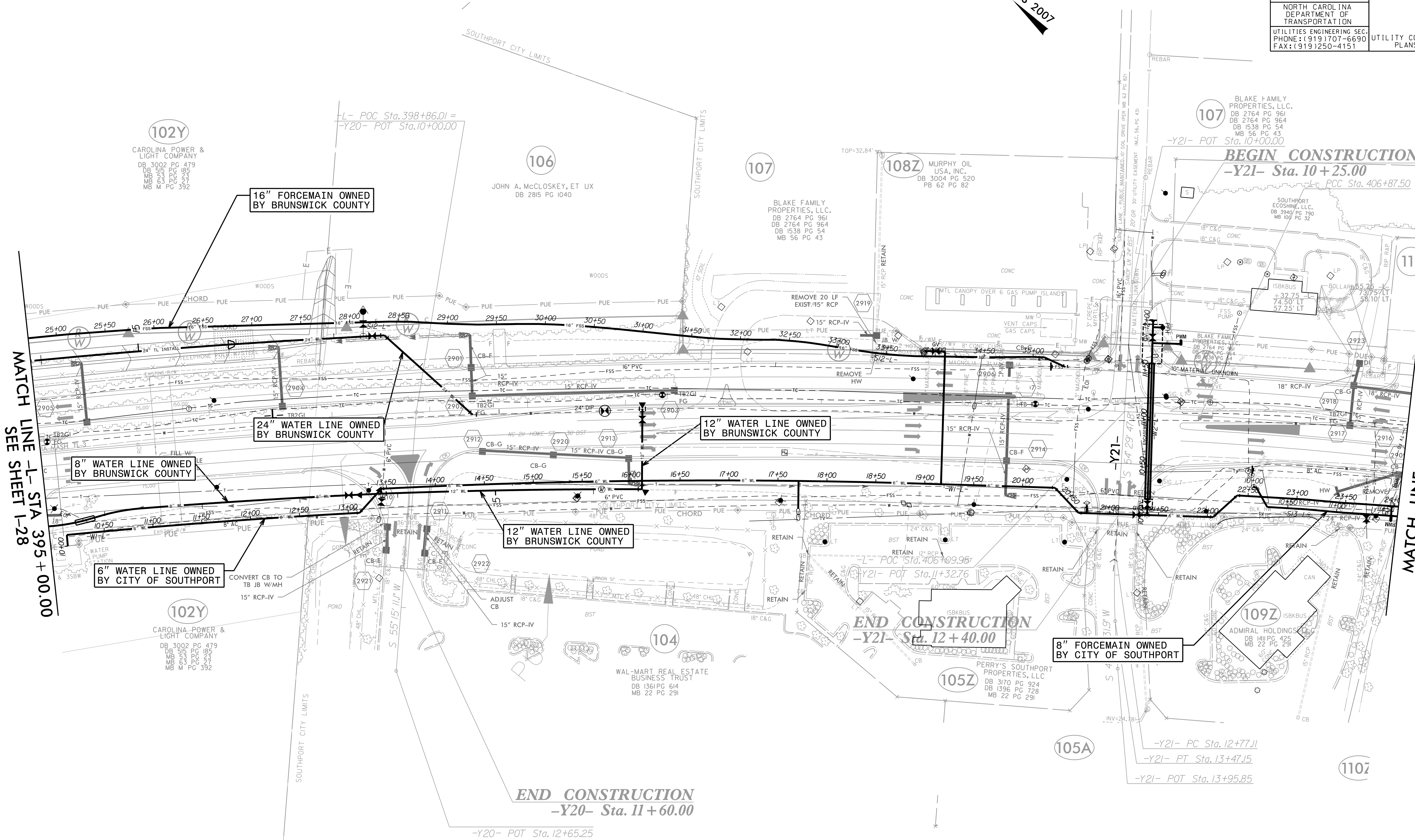


FOR INFORMATION ONLY
SEE UC-29/UC-75 FOR CONSTRUCTION DETAILS

NAD 83/NSRS 2007

PROJECT REFERENCE NO.	SHEET NO.
R-5021	I-29
DESIGNED BY: JXL	
DRAWN BY: JXL	
CHECKED BY: BMB	
APPROVED BY: BMB	
REVISED:	
NORTH CAROLINA DEPARTMENT OF TRANSPORTATION	
UTILITIES ENGINEERING SECTION (919) 707-6690 FAX: (919) 250-4151	
UTILITY CONSTRUCTION PLANS ONLY	



MATCH LINE -L- STA 395 + 00.00
SEE SHEET I-28

MATCH LINE -L- STA 409 + 00.00
SEE SHEET I-30

102Y
CAROLINA POWER & LIGHT COMPANY
DB 3002 PG 479
MB 515 PG 185
MB 533 PG 237
MB 551 PG 277
MB M PG 392

106
JOHN A. McCLOSKEY, ET UX
DB 2815 PG 1040

107
BLAKE FAMILY PROPERTIES, LLC.
DB 2764 PG 961
DB 2764 PG 964
DB 1538 PG 54
MB 56 PG 43

108Z
MURPHY OIL USA, INC.
DB 3004 PG 520
PB 62 PG 82

107
BLAKE FAMILY PROPERTIES, LLC.
DB 2764 PG 961
DB 2764 PG 964
DB 1538 PG 54
MB 56 PG 43

BEGIN CONSTRUCTION
-Y21- Sta. 10 + 25.00
-L- PCC Sta. 406+87.50

8" WATER LINE OWNED BY BRUNSWICK COUNTY

24" WATER LINE OWNED BY BRUNSWICK COUNTY

12" WATER LINE OWNED BY BRUNSWICK COUNTY

12" WATER LINE OWNED BY BRUNSWICK COUNTY

6" WATER LINE OWNED BY CITY OF SOUTHPORT

8" FORCEMAIN OWNED BY CITY OF SOUTHPORT

102Y
CAROLINA POWER & LIGHT COMPANY
DB 3002 PG 479
MB 515 PG 185
MB 533 PG 237
MB 551 PG 277
MB M PG 392

104
WAL-MART REAL ESTATE BUSINESS TRUST
DB 1361 PG 614
MB 22 PG 291

105Z
PERRY'S SOUTHPORT PROPERTIES, LLC
DB 3170 PG 924
DB 1396 PG 728
MB 22 PG 291

109Z
ADMIRAL HOLDINGS
DB 1411 PG 425
MB 22 PG 291

END CONSTRUCTION
-Y20- Sta. 11 + 60.00

END CONSTRUCTION
-Y21- Sta. 12 + 40.00

5/14/99
meier.rg\UC75\Index of UC Sheets\R-5021\rdy29_UC75.psh.dgn