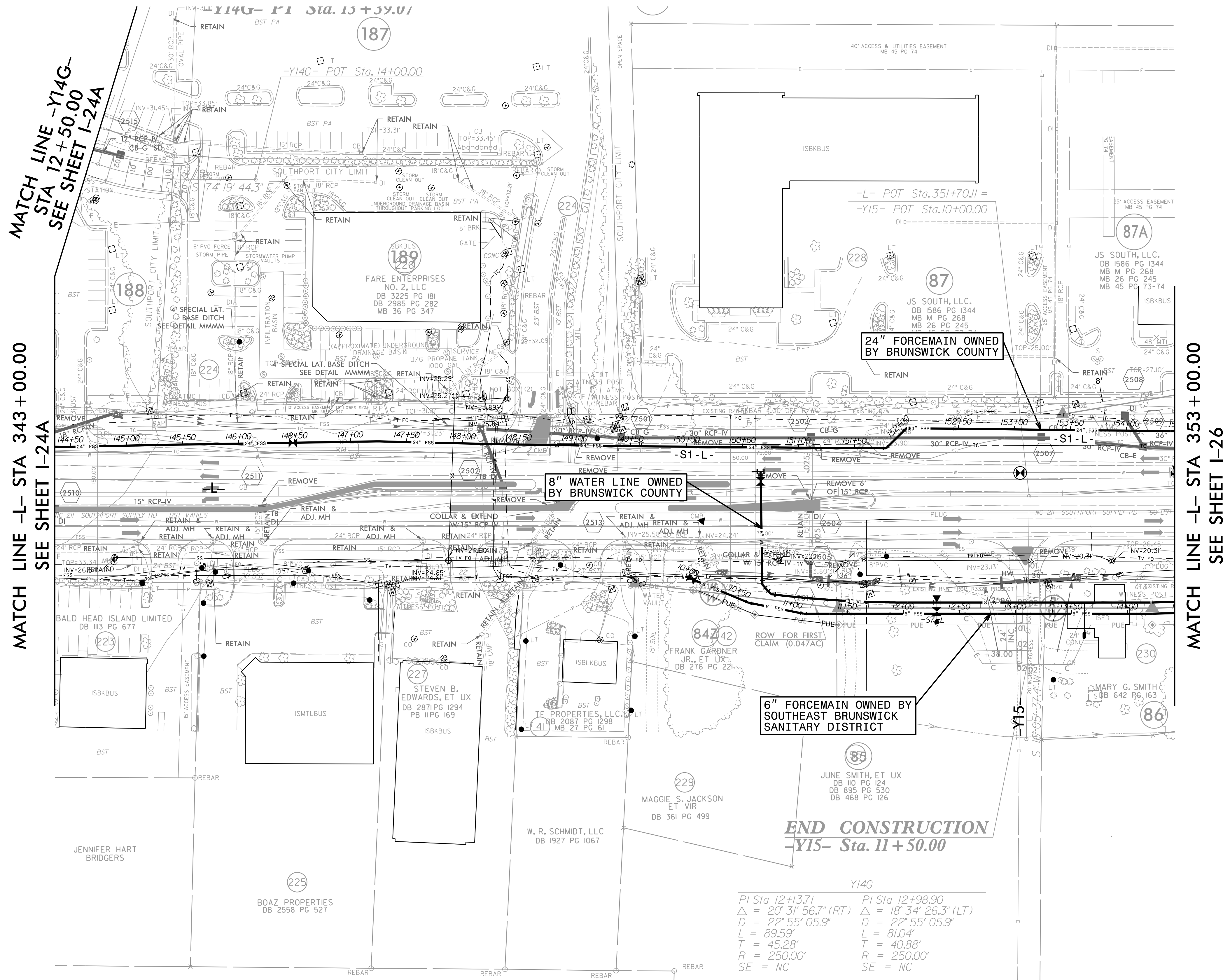


FOR INFORMATION ONLY  
SEE UC-25/UC-71 FOR CONSTRUCTION DETAILS

PROJECT REFERENCE NO.	SHEET NO.
R-5021	I-25
DESIGNED BY: JXL	UTILITY CONSTRUCTION PLANS ONLY
DRAWN BY: JXL	
CHECKED BY: BMB	
APPROVED BY: BMB	
REVISED:	
NORTH CAROLINA DEPARTMENT OF TRANSPORTATION	
UTILITIES ENGINEERING SEC. PHONE: (919) 707-6690 FAX: (919) 250-4151	



MATCH LINE -Y14G-  
STA 12+50.00  
SEE SHEET I-24A

MATCH LINE -L- STA 343+00.00  
SEE SHEET I-24A

MATCH LINE -L- STA 353+00.00  
SEE SHEET I-26

24" FORCE MAIN OWNED BY BRUNSWICK COUNTY

8" WATER LINE OWNED BY BRUNSWICK COUNTY

6" FORCE MAIN OWNED BY SOUTHEAST BRUNSWICK SANITARY DISTRICT

END CONSTRUCTION  
-Y15- Sta. 11+50.00

-Y14G-  
 PI Sta 12+13.71      PI Sta 12+98.90  
 $\Delta = 20' 31" 56.7" (RT)$        $\Delta = 18' 34" 26.3" (LT)$   
 $D = 22' 55" 05.9"$        $D = 22' 55" 05.9"$   
 $L = 89.59'$        $L = 81.04'$   
 $T = 45.28'$        $T = 40.88'$   
 $R = 250.00'$        $R = 250.00'$   
 $SE = NC$        $SE = NC$

NAD 83  
BRUNSWICK 2007

5/14/99  
 neering\UC\2022\Index of UC Sheets\R-5021\ut.rd\25\_UC71\_psh.dgn