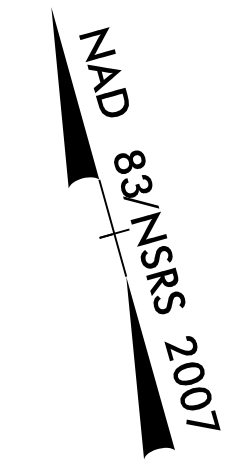


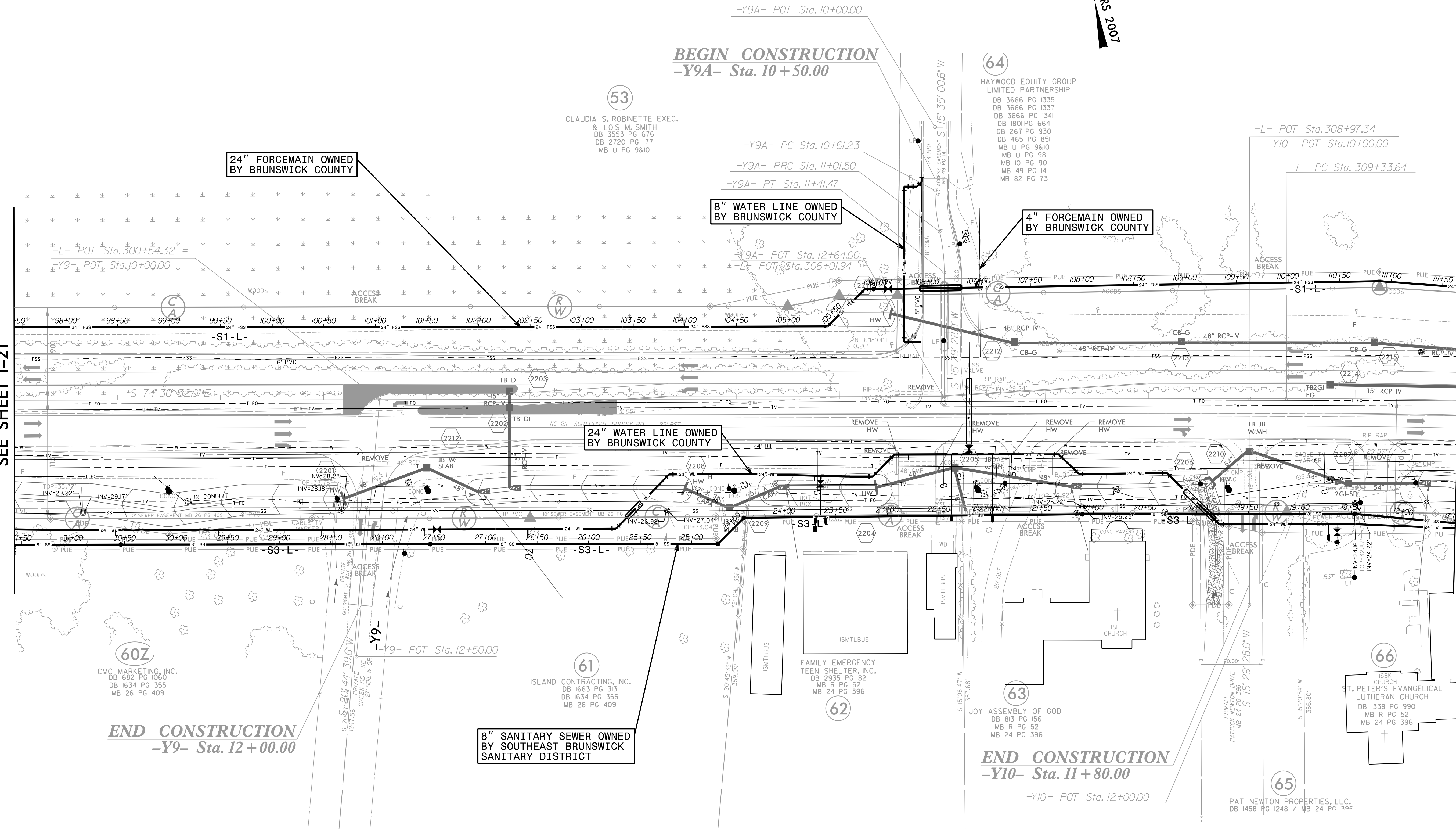
FOR INFORMATION ONLY  
SEE UC-22/UC-67 FOR CONSTRUCTION DETAILS

|  |                                    |
|--|------------------------------------|
| PROJECT REFERENCE NO.  | SHEET NO.                          |
| R-5021   | I-22                               |
| DESIGNED BY: JXL   | UTILITY CONSTRUCTION<br>PLANS ONLY |
| DRAWN BY: JXL  |                                    |
| CHECKED BY: BMB  |                                    |
| APPROVED BY: BMB   |                                    |
| REVISED:   |                                    |
| NORTH CAROLINA<br>DEPARTMENT OF<br>TRANSPORTATION                          |                                    |
| UTILITIES ENGINEERING SEC.<br>PHONE: (919) 707-6690<br>FAX: (919) 250-4151 |                                    |



MATCH LINE -L- STA 297 + 00.00  
SEE SHEET I-21

MATCH LINE -L- STA 311 + 00.00  
SEE SHEET I-23



**BEGIN CONSTRUCTION**  
-Y9A- Sta. 10 + 50.00

**END CONSTRUCTION**  
-Y9- Sta. 12 + 00.00

**END CONSTRUCTION**  
-Y10- Sta. 11 + 80.00

53  
CLAUDIA S. ROBINETTE EXEC.  
& LOIS M. SMITH  
DB 3553 PG 676  
DB 2720 PG 177  
MB U PG 9&10

64  
HAYWOOD EQUITY GROUP  
LIMITED PARTNERSHIP  
DB 3666 PG 1335  
DB 3666 PG 1337  
DB 3666 PG 1341  
DB 1801 PG 664  
DB 2671 PG 930  
DB 465 PG 851  
MB U PG 9&10  
MB I PG 98  
MB IO PG 90  
MB 49 PG 14  
MB 82 PG 73

60Z  
CMC MARKETING, INC.  
DB 682 PG 1060  
DB 1634 PG 355  
MB 26 PG 409

61  
ISLAND CONTRACTING, INC.  
DB 1663 PG 313  
DB 1634 PG 355  
MB 26 PG 409

62  
FAMILY EMERGENCY  
TEEN SHELTER, INC.  
DB 2935 PG 82  
MB R PG 52  
MB 24 PG 396

63  
JOY ASSEMBLY OF GOD  
DB 813 PG 156  
MB R PG 52  
MB 24 PG 396

66  
ST. PETER'S EVANGELICAL  
LUTHERAN CHURCH  
DB 1338 PG 990  
MB R PG 52  
MB 24 PG 396

65  
PAT NEWTON PROPERTIES, LLC.  
DB 1458 PG 1248 / MB 24 PG 306

5/14/99

meer-ng\UC67\2022\Index of UC Sheets\R-5021\ut\_rdy22\_UC67\_psh.dgn

**RK&K**  
P: (919) 878-9560  
8601 Six Forks Road, Forum 1, Suite 700  
Raleigh, North Carolina 27615-3960  
NC License No. F-0112  
Engineers | Construction Managers | Planners | Scientists  
www.rk.com  
Responsive People | Creative Solutions