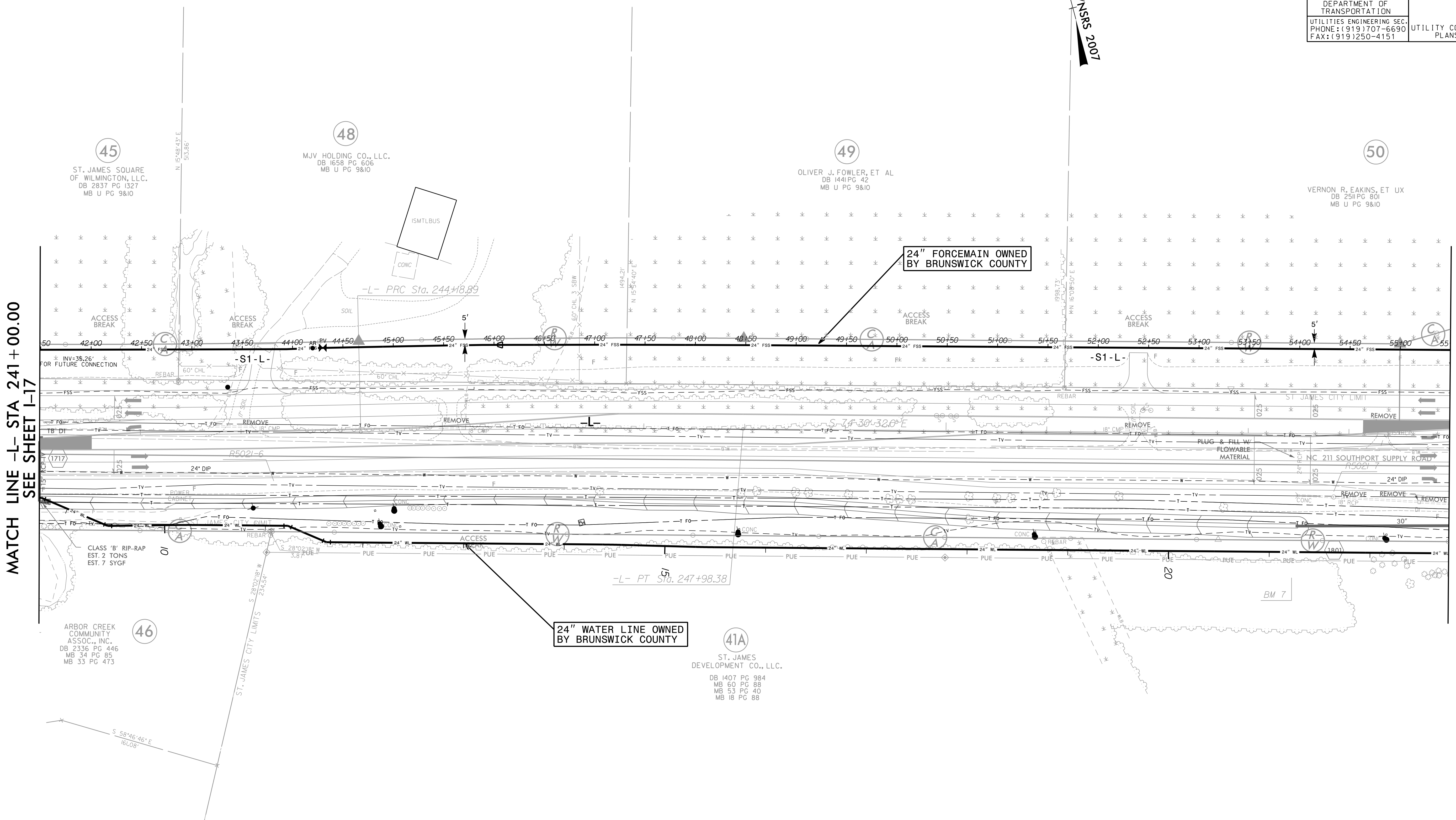


FOR INFORMATION ONLY
SEE UC-18/UC-63 FOR CONSTRUCTION ONLY

PROJECT REFERENCE NO.	SHEET NO.
R-5021	I-18
DESIGNED BY: JXL	UTILITY CONSTRUCTION PLANS ONLY
DRAWN BY: JXL	
CHECKED BY: BMB	
APPROVED BY: BMB	
REVISED:	
NORTH CAROLINA DEPARTMENT OF TRANSPORTATION	
UTILITIES ENGINEERING SEC. PHONE: (919) 707-6690 FAX: (919) 250-4151	

MATCH LINE -L- STA 241 + 00.00
SEE SHEET I-17

MATCH LINE -L- STA 255 + 00.00
SEE SHEET I-19



45
ST. JAMES SQUARE
OF WILMINGTON, L.L.C.
DB 2837 PG 1327
MB U PG 9&10

48
MJV HOLDING CO., L.L.C.
DB 1658 PG 606
MB U PG 9&10

49
OLIVER J. FOWLER, ET AL
DB 1441 PG 42
MB U PG 9&10

50
VERNON R. EAKINS, ET UX
DB 2511 PG 801
MB U PG 9&10

46
ARBOR CREEK
COMMUNITY
ASSOC., INC.
DB 2336 PG 446
MB 34 PG 85
MB 33 PG 473

41A
ST. JAMES
DEVELOPMENT CO., L.L.C.
DB 1407 PG 984
MB 60 PG 88
MB 53 PG 40
MB 18 PG 88

5/14/99

Engineering\UC\2022\Index of UC Sheets\R-5021\ut.rd\I18_UC63.psh.dgn

RK&K
P: (919) 878-9560
8601 Six Forks Road, Forum 1, Suite 700
Raleigh, North Carolina 27615-3960
NC License No. F-0112
Engineers | Construction Managers | Planners | Scientists
www.rk.com
Responsive People | Creative Solutions