

PROJECT REFERENCE NO.	SHEET NO.
R-5021	I-11
DESIGNED BY: JXL	UTILITY CONSTRUCTION PLANS ONLY
DRAWN BY: JXL	
CHECKED BY: BMB	
APPROVED BY: BMB	
REVISED:	
NORTH CAROLINA DEPARTMENT OF TRANSPORTATION	
UTILITIES ENGINEERING SEC. PHONE: (919) 707-6690 FAX: (919) 250-4151	

FOR INFORMATION ONLY
SEE UC-11 FOR CONSTRUCTION DETAILS

BEGIN CONSTRUCTION
-Y1C- Sta. 10+00.00

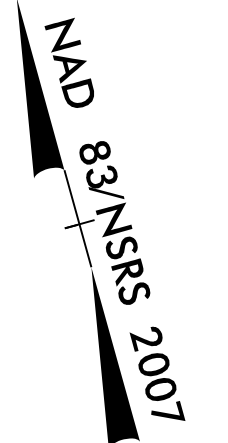
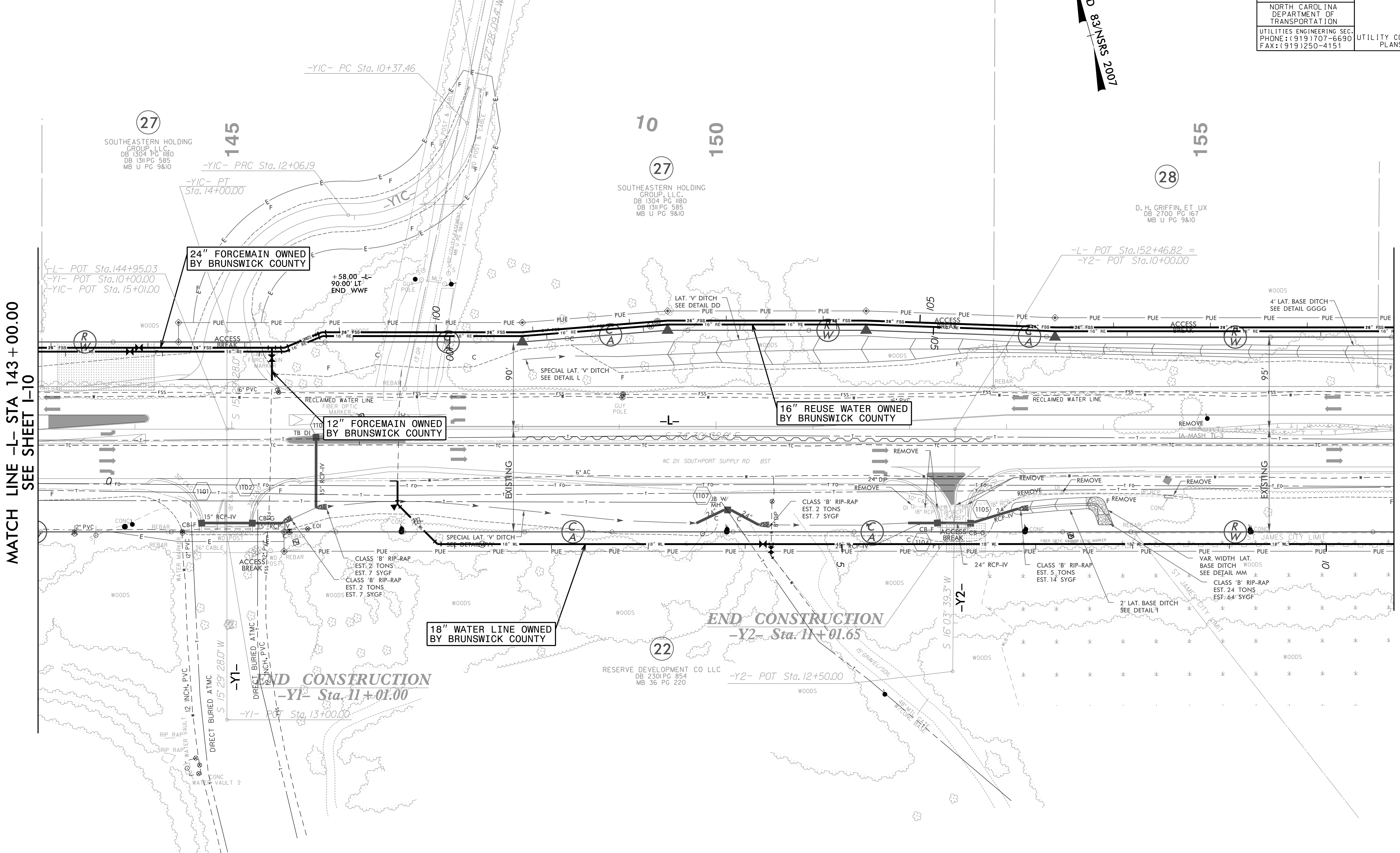
END CONSTRUCTION
-Y2- Sta. 11+01.65

END CONSTRUCTION
-Y1- Sta. 11+01.00

MATCH LINE -L- STA 143+00.00
SEE SHEET I-10

MATCH LINE -L- STA 157+00.00
SEE SHEET I-12

5/14/99
5/14/2022
Index of UC Sheets R-5021-11-10009_psh.dgn



27
SOUTHEASTERN HOLDING GROUP, LLC
DB 1304 PG 1180
DB 1311 PG 585
MB U PG 9&10

27
SOUTHEASTERN HOLDING GROUP, LLC
DB 1304 PG 1180
DB 1311 PG 585
MB U PG 9&10

28
D. H. GRIFFIN, ET. UX
DB 2700 PG 167
MB U PG 9&10

22
RESERVE DEVELOPMENT CO LLC
DB 2301 PG 854
MB 36 PG 220

RK&K
P: (919) 878-9560
8601 Six Forks Road, Forum 1, Suite 700
Raleigh, North Carolina 27615-3960
NC License No. F-0112
Engineers | Construction Managers | Planners | Scientists
www.rk.com
Responsive People | Creative Solutions