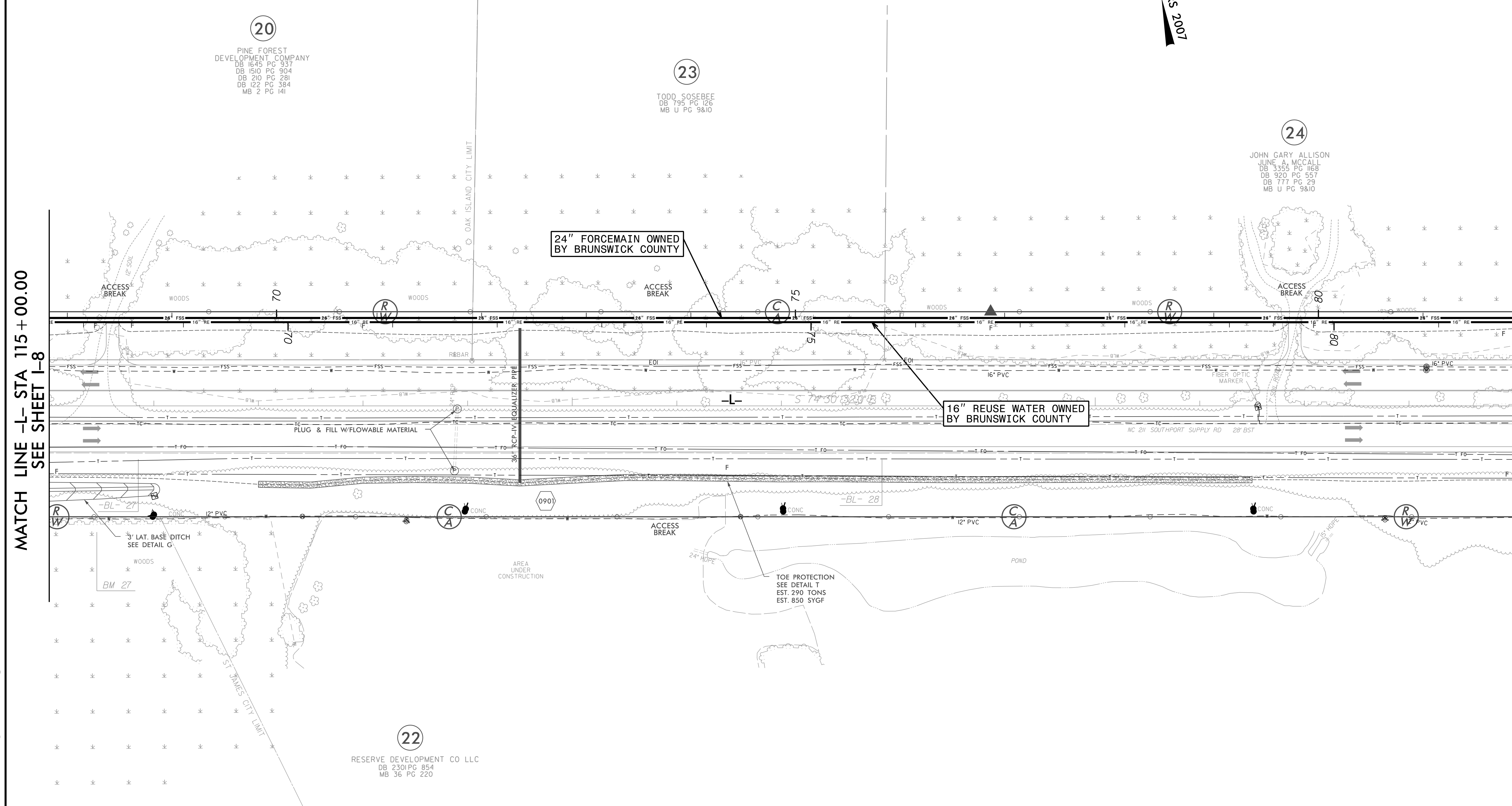
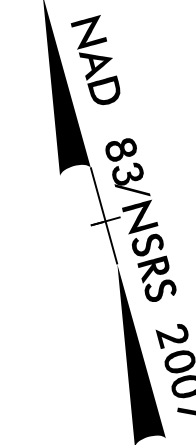


FOR INFORMATION ONLY  
SEE UC-9 FOR CONSTRUCTION DETAILS

PROJECT REFERENCE NO.	SHEET NO.
R-5021	I-9
DESIGNED BY: JXL	
DRAWN BY: JXL	
CHECKED BY: BMB	
APPROVED BY: BMB	
REVISED:	
NORTH CAROLINA DEPARTMENT OF TRANSPORTATION	UTILITY CONSTRUCTION PLANS ONLY
UTILITIES ENGINEERING SEC. PHONE: (919) 707-6690 FAX: (919) 250-4151	



MATCH LINE -L- STA 115 + 00.00  
SEE SHEET I-8

MATCH LINE -L- STA 129 + 00.00  
SEE SHEET I-10

20  
PINE FOREST  
DEVELOPMENT COMPANY  
DB 1645 PG 337  
DB 1510 PG 904  
DB 210 PG 281  
DB 122 PG 384  
MB 2 PG 141

23  
TODD SOSEBEE  
DB 795 PG 126  
MB U PG 9810

24  
JOHN GARY ALLISON  
JUNE A. MCCALL  
DB 3355 PG 1168  
DB 920 PG 551  
DB 777 PG 29  
MB U PG 9810

22  
RESERVE DEVELOPMENT CO LLC  
DB 2301 PG 854  
MB 36 PG 220

24" FORCE MAIN OWNED  
BY BRUNSWICK COUNTY

16" REUSE WATER OWNED  
BY BRUNSWICK COUNTY

P: (919) 878-9560  
8601 Six Forks Road, Forum 1, Suite 700  
Raleigh, North Carolina 27615-3960  
NC License No. F-0112  
Engineers | Construction Managers | Planners | Scientists  
www.rkk.com  
Responsive People | Creative Solutions

5/14/99  
Engineering\UC\Projects\Index of UC Sheets\R-5021\ut\_rdy09\_U007psh.dgn