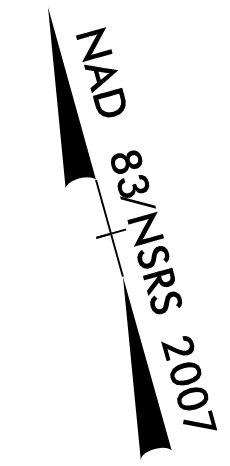


FOR INFORMATION ONLY  
SEE UC-22/UC-67 FOR CONSTRUCTION DETAILS

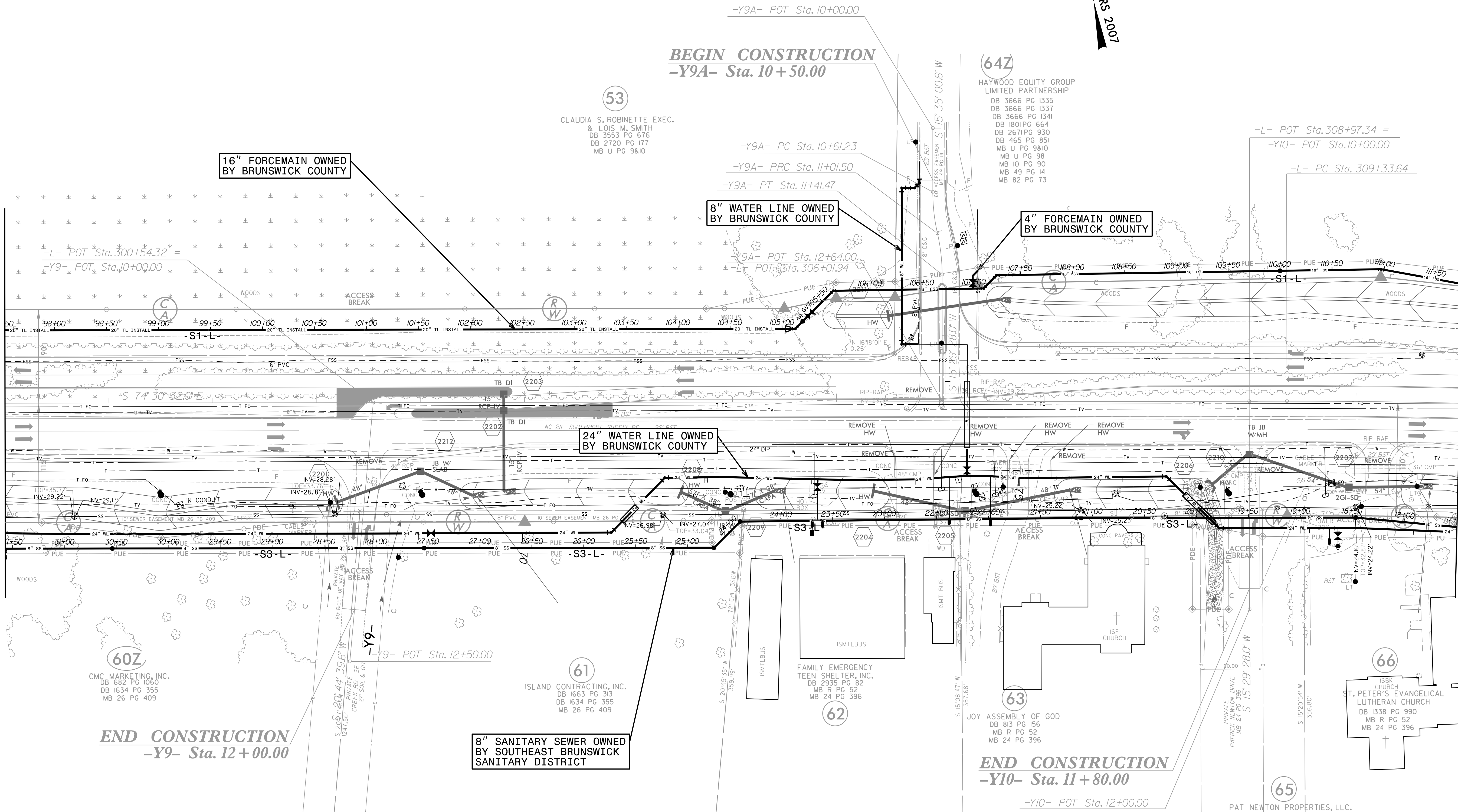
PROJECT REFERENCE NO.	SHEET NO.
R-5021	I-22
DESIGNED BY: JXL	UTILITY CONSTRUCTION PLANS ONLY
DRAWN BY: JXL	
CHECKED BY: BMB	
APPROVED BY: BMB	
REVISED:	
NORTH CAROLINA DEPARTMENT OF TRANSPORTATION	
UTILITIES ENGINEERING SEC. PHONE: (919) 707-6690 FAX: (919) 250-4151	



5/14/99  
9/22/2021 Index of UC Sheets \R-5021-ut-rdy22-UC67\_psh.dgn

MATCH LINE -L- STA 297 + 00.00  
SEE SHEET I-21

MATCH LINE -L- STA 311 + 00.00  
SEE SHEET I-23



16" FORCEMAIN OWNED BY BRUNSWICK COUNTY

8" WATER LINE OWNED BY BRUNSWICK COUNTY

4" FORCEMAIN OWNED BY BRUNSWICK COUNTY

24" WATER LINE OWNED BY BRUNSWICK COUNTY

8" SANITARY SEWER OWNED BY SOUTHEAST BRUNSWICK SANITARY DISTRICT

BEGIN CONSTRUCTION  
-Y9A- Sta. 10 + 50.00

END CONSTRUCTION  
-Y9- Sta. 12 + 00.00

END CONSTRUCTION  
-Y10- Sta. 11 + 80.00

53  
CLAUDIA S. ROBINETTE EXEC.  
& LOIS M. SMITH  
DB 3553 PG 676  
DB 2720 PG 177  
MB U PG 9&10

64Z  
HAYWOOD EQUITY GROUP  
LIMITED PARTNERSHIP  
DB 3666 PG 1335  
DB 3666 PG 1337  
DB 3666 PG 1341  
DB 1801 PG 664  
DB 2671 PG 930  
DB 465 PG 851  
MB U PG 9&10  
MB U PG 98  
MB 10 PG 90  
MB 49 PG 14  
MB 82 PG 73

60Z  
CMC MARKETING, INC.  
DB 1682 PG 1060  
DB 1634 PG 355  
MB 26 PG 409

61  
ISLAND CONTRACTING, INC.  
DB 1663 PG 313  
DB 1634 PG 355  
MB 26 PG 409

62  
FAMILY EMERGENCY  
TEEN SHELTER, INC.  
DB 2935 PG 82  
MB R PG 52  
MB 24 PG 396

63  
JOY ASSEMBLY OF GOD  
DB 813 PG 156  
MB R PG 52  
MB 24 PG 396

66  
ST. PETER'S EVANGELICAL  
LUTHERAN CHURCH  
DB 1338 PG 990  
MB R PG 52  
MB 24 PG 396

65  
PAT NEWTON PROPERTIES, LLC.  
DB 1458 PG 1248 / MB 24 PG 306

**RK&K**  
P: (919) 878-9560  
8601 Six Forks Road, Forum 1, Suite 700  
Raleigh, North Carolina 27615-3960  
NC License No. F-0112  
Engineers | Construction Managers | Planners | Scientists  
www.rkk.com  
Responsive People | Creative Solutions