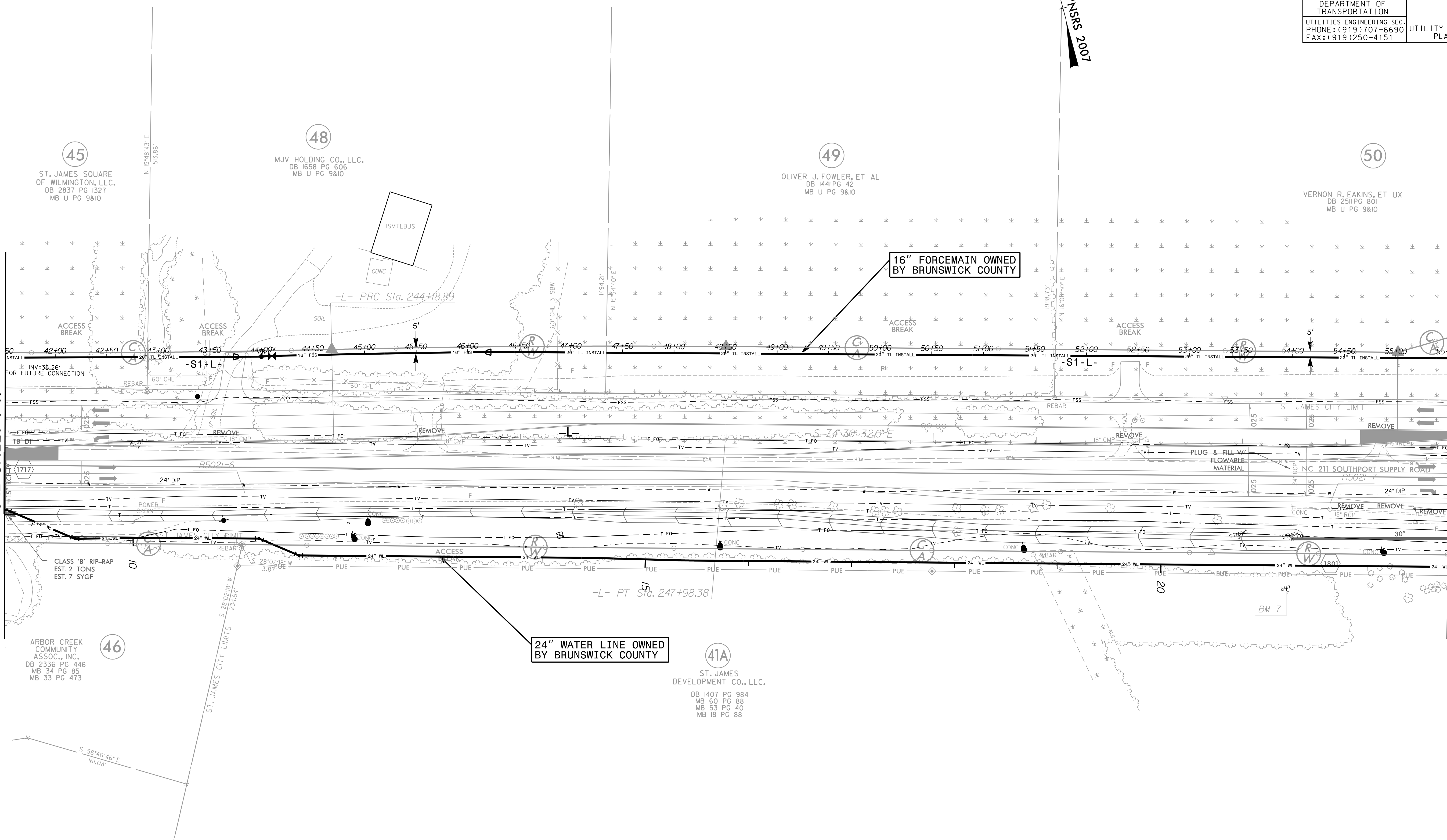


FOR INFORMATION ONLY  
SEE UC-18/UC-63 FOR CONSTRUCTION ONLY

PROJECT REFERENCE NO.	SHEET NO.
R-5021	I-18
DESIGNED BY: JXL	
DRAWN BY: JXL	
CHECKED BY: BMB	
APPROVED BY: BMB	
REVISED:	
NORTH CAROLINA DEPARTMENT OF TRANSPORTATION	
UTILITIES ENGINEERING SEC. PHONE: (919) 707-6690 FAX: (919) 250-4151	
UTILITY CONSTRUCTION PLANS ONLY	

MATCH LINE -L- STA 241 + 00.00  
SEE SHEET I-17

MATCH LINE -L- STA 255 + 00.00  
SEE SHEET I-19



45  
ST. JAMES SQUARE  
OF WILMINGTON, LLC.  
DB 2837 PG 1327  
MB U PG 9&10

48  
MJV HOLDING CO., LLC.  
DB 1658 PG 606  
MB U PG 9&10

49  
OLIVER J. FOWLER, ET AL  
DB 1441 PG 42  
MB U PG 9&10

50  
VERNON R. EAKINS, ET UX  
DB 2511 PG 801  
MB U PG 9&10

46  
ARBOR CREEK  
COMMUNITY  
ASSOC., INC.  
DB 2336 PG 446  
MB 34 PG 85  
MB 33 PG 473

24" WATER LINE OWNED  
BY BRUNSWICK COUNTY

41A  
ST. JAMES  
DEVELOPMENT CO., LLC.  
DB 1407 PG 984  
MB 60 PG 88  
MB 53 PG 40  
MB 18 PG 88

**RK&K**  
P: (919) 878-9550  
8601 Six Forks Road, Forum 1, Suite 700  
Raleigh, North Carolina 27615-3960  
NC License No. F-0112  
Engineers | Construction Managers | Planners | Scientists  
www.rkk.com  
Responsive People | Creative Solutions

5/14/99  
8/22/2021 index of UC Sheets R-5021...uc63.psh.dgn