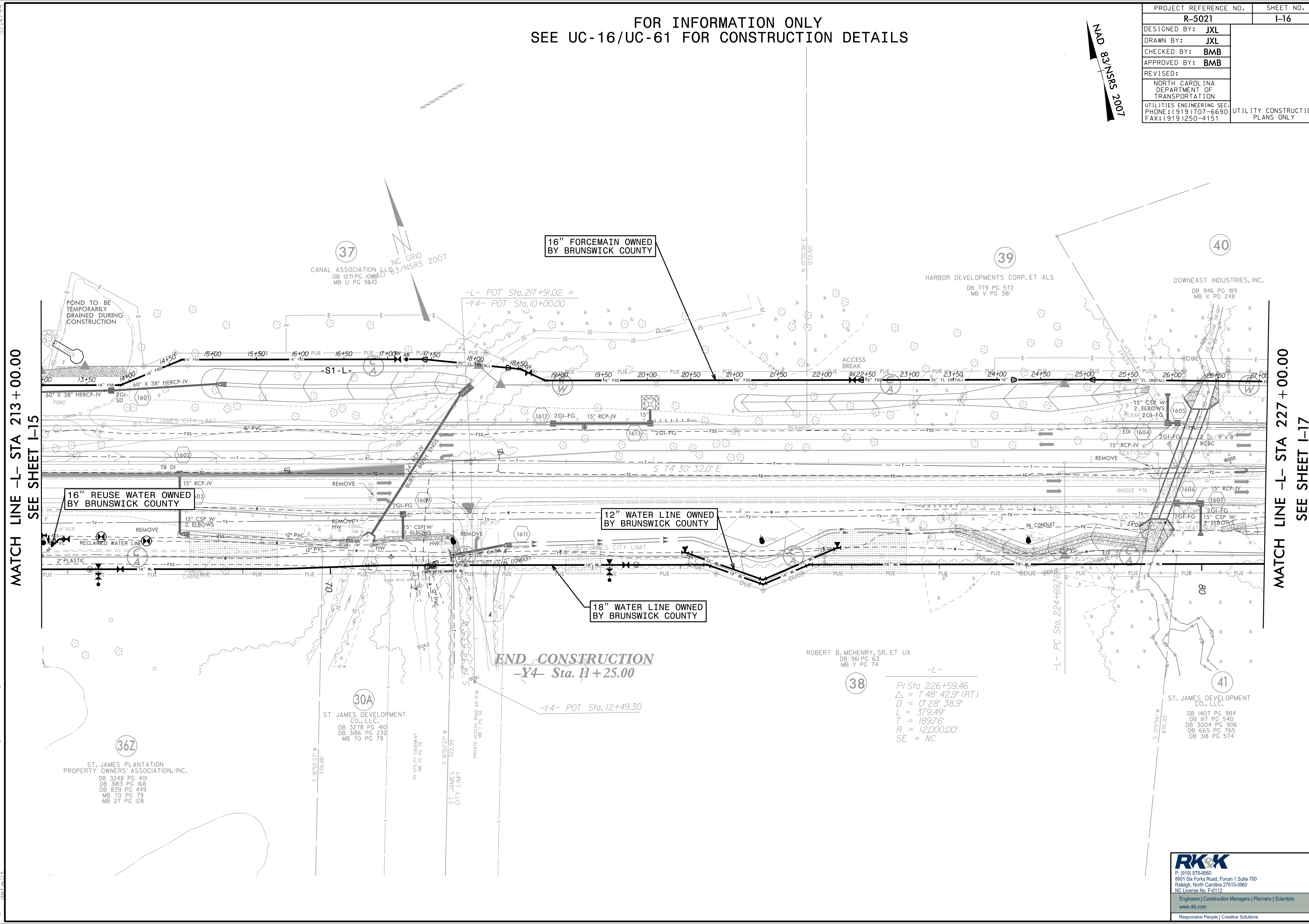


FOR INFORMATION ONLY
SEE UC-16/UC-61 FOR CONSTRUCTION DETAILS

PROJECT REFERENCE NO.	SHEET NO.
R-5021	I-16
DESIGNED BY: JXL	
DRAWN BY: JXL	
CHECKED BY: BMB	
APPROVED BY: BMB	
REVISED:	
NORTH CAROLINA DEPARTMENT OF TRANSPORTATION	
UTILITIES ENGINEERING SEC. PHONE: (919) 707-6690 FAX: (919) 250-4151	UTILITY CONSTRUCTION PLANS ONLY

MAD 8/NSRS 2007



MATCH LINE -L- STA 213+00.00
SEE SHEET I-15

MATCH LINE -L- STA 227+00.00
SEE SHEET I-17

END CONSTRUCTION
-Y4- Sta. 11+25.00

38
 -L-
 PI Sta 226+59.46
 $\Delta = 1' 48' 42.9" (RT)$
 $D = 0' 28' 38.9"$
 $L = 379.49'$
 $T = 189.76'$
 $R = 12,000.00'$
 $SE = NC$

RK&K
 P: (919) 878-9550
 8601 Six Forks Road, Forum 1, Suite 700
 Raleigh, North Carolina 27615-3960
 NC License No. F-0112
 Engineers | Construction Managers | Planners | Scientists
 www.rkk.com
 Responsive People | Creative Solutions

5/14/99
 Engineering\UC\3\Index of UC Sheets\R-5021-ut-r-dj16-UC61-esk.dgn