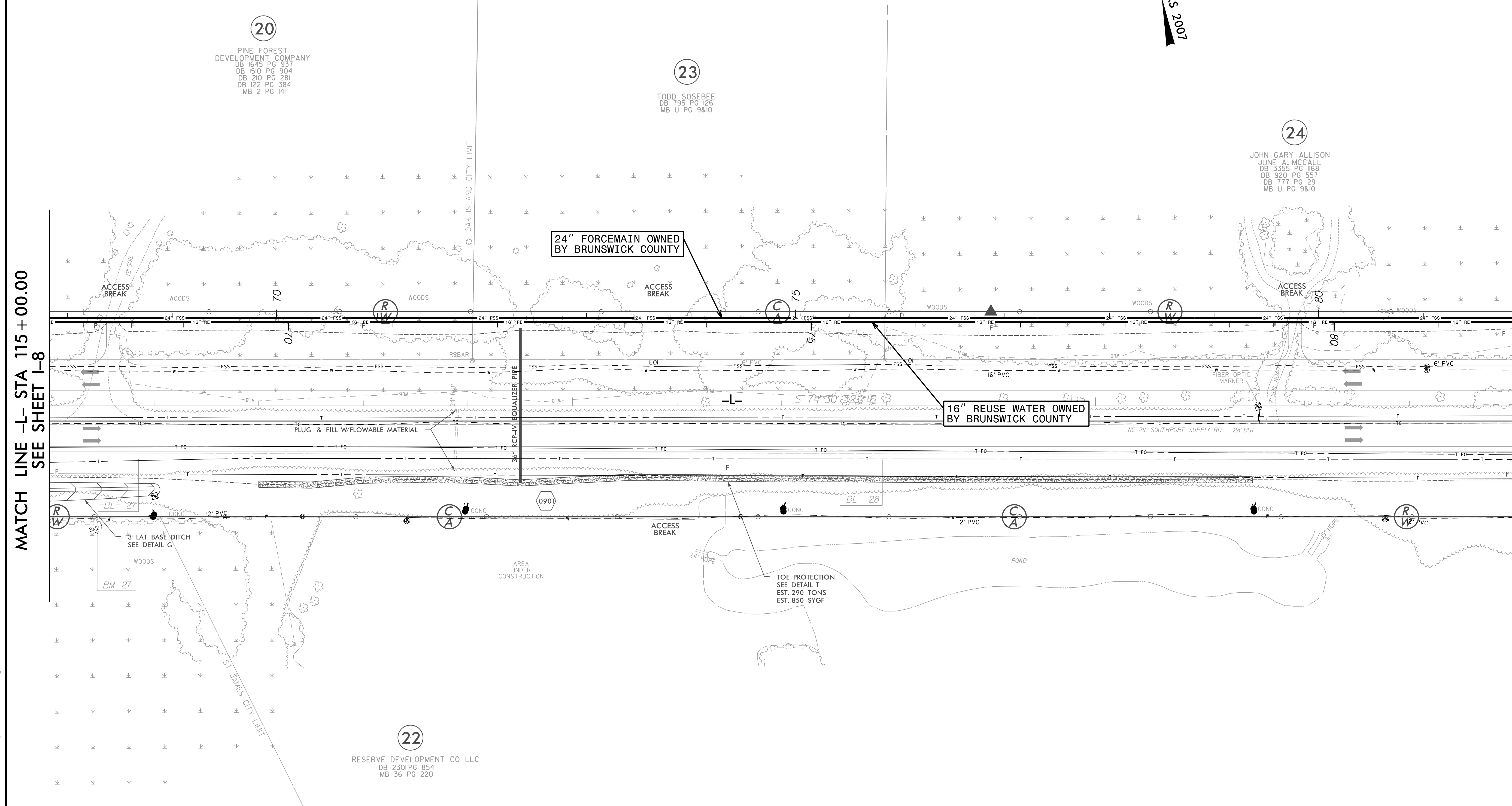
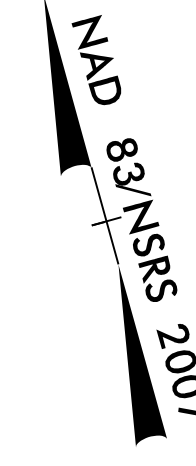


FOR INFORMATION ONLY
SEE UC-9 FOR CONSTRUCTION DETAILS

PROJECT REFERENCE NO.	SHEET NO.
R-5021	I-9
DESIGNED BY: JXL	
DRAWN BY: JXL	
CHECKED BY: BMB	
APPROVED BY: BMB	
REVISED:	
NORTH CAROLINA DEPARTMENT OF TRANSPORTATION	UTILITY CONSTRUCTION PLANS ONLY
UTILITIES ENGINEERING SEC. PHONE: (919) 707-6690 FAX: (919) 250-4151	



MATCH LINE -L- STA 115 + 00.00
SEE SHEET I-8

MATCH LINE -L- STA 129 + 00.00
SEE SHEET I-10

20
PINE FOREST
DEVELOPMENT COMPANY
DB 1645 PG 537
DB 1510 PG 904
DB 210 PG 281
DB 122 PG 384
MB 2 PG 141

23
TODD SOSEBEE
DB 795 PG 126
MB U PG 9810

24
JOHN GARY ALLISON
JUNE A. MCCALL
DB 3355 PG 1163
DB 920 PG 557
DB 777 PG 29
MB U PG 9810

22
RESERVE DEVELOPMENT CO LLC
DB 2301 PG 854
MB 36 PG 220

24" FORCEMAIN OWNED
BY BRUNSWICK COUNTY

16" REUSE WATER OWNED
BY BRUNSWICK COUNTY

P: (919) 878-9560
8601 Six Forks Road, Forum 1, Suite 700
Raleigh, North Carolina 27615-3960
NC License No. F-0112
Engineers | Construction Managers | Planners | Scientists
www.rkk.com
Responsive People | Creative Solutions

5/14/99
9/22/2007
index of UC Sheets\R-5021\ut_rdy09_U007psh.dgn