

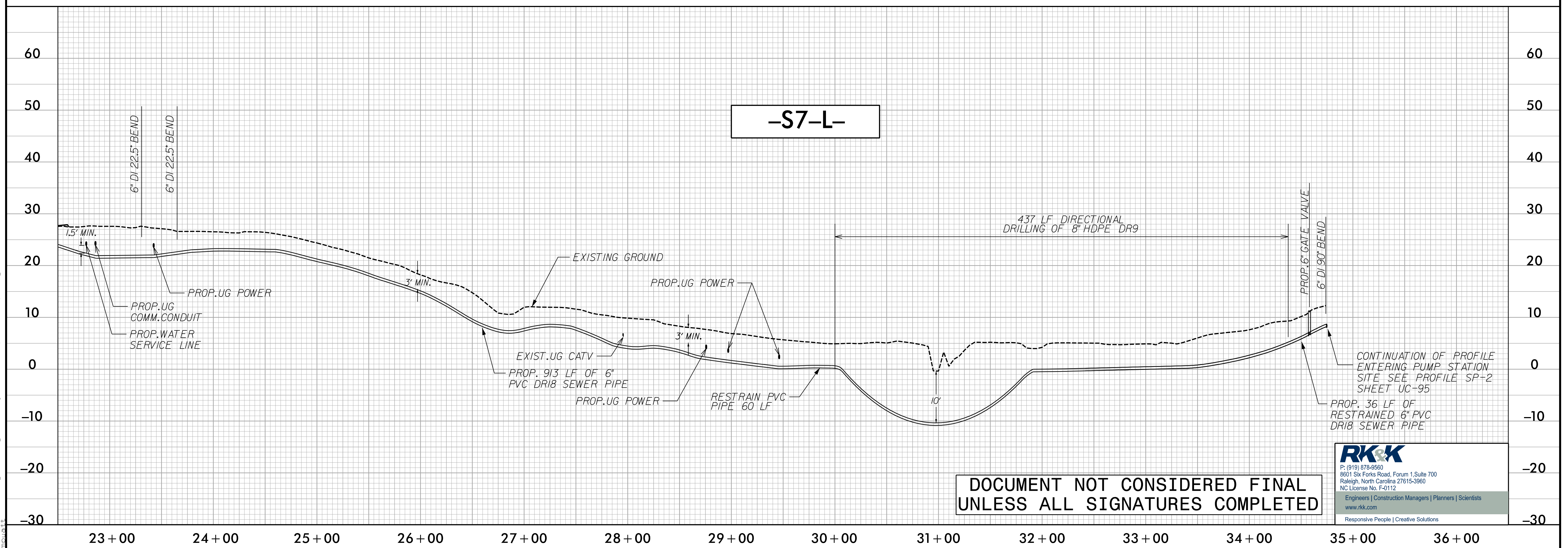
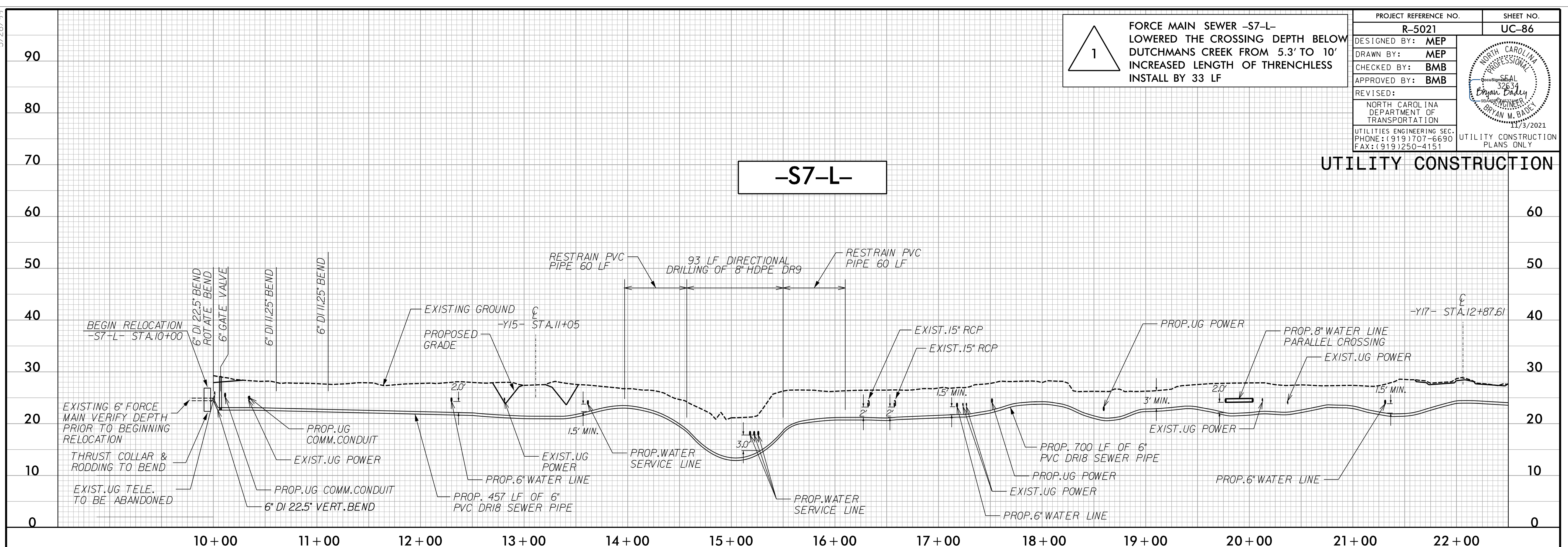
5/28/99

1

FORCE MAIN SEWER -S7-L- LOWERED THE CROSSING DEPTH BELOW DUTCHMANS CREEK FROM 5.3' TO 10' INCREASED LENGTH OF TRENCHLESS INSTALL BY 33 LF

PROJECT REFERENCE NO. R-5021	SHEET NO. UC-86
DESIGNED BY: MEP	
DRAWN BY: MEP	
CHECKED BY: BMB	
APPROVED BY: BMB	
REVISED:	
NORTH CAROLINA DEPARTMENT OF TRANSPORTATION UTILITIES ENGINEERING SEC. PHONE: (919) 707-6690 FAX: (919) 250-4151	
UTILITY CONSTRUCTION PLANS ONLY	

UTILITY CONSTRUCTION



**DOCUMENT NOT CONSIDERED FINAL
UNLESS ALL SIGNATURES COMPLETED**

RK&K
 P: (919) 878-9580
 8601 Six Forks Road, Forum 1, Suite 700
 Raleigh, North Carolina 27615-3960
 NC License No. F-0112
 Engineers | Construction Managers | Planners | Scientists
 www.rkk.com
 Responsive People | Creative Solutions

I:\3\2021\Utilities\Engineering\UC\Proj\NR-5021\ut-pf1 UC86-esh.dgn