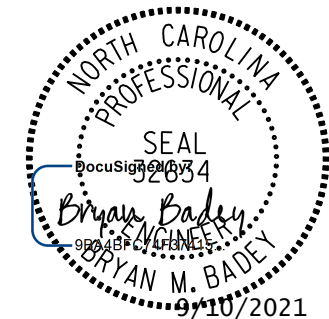


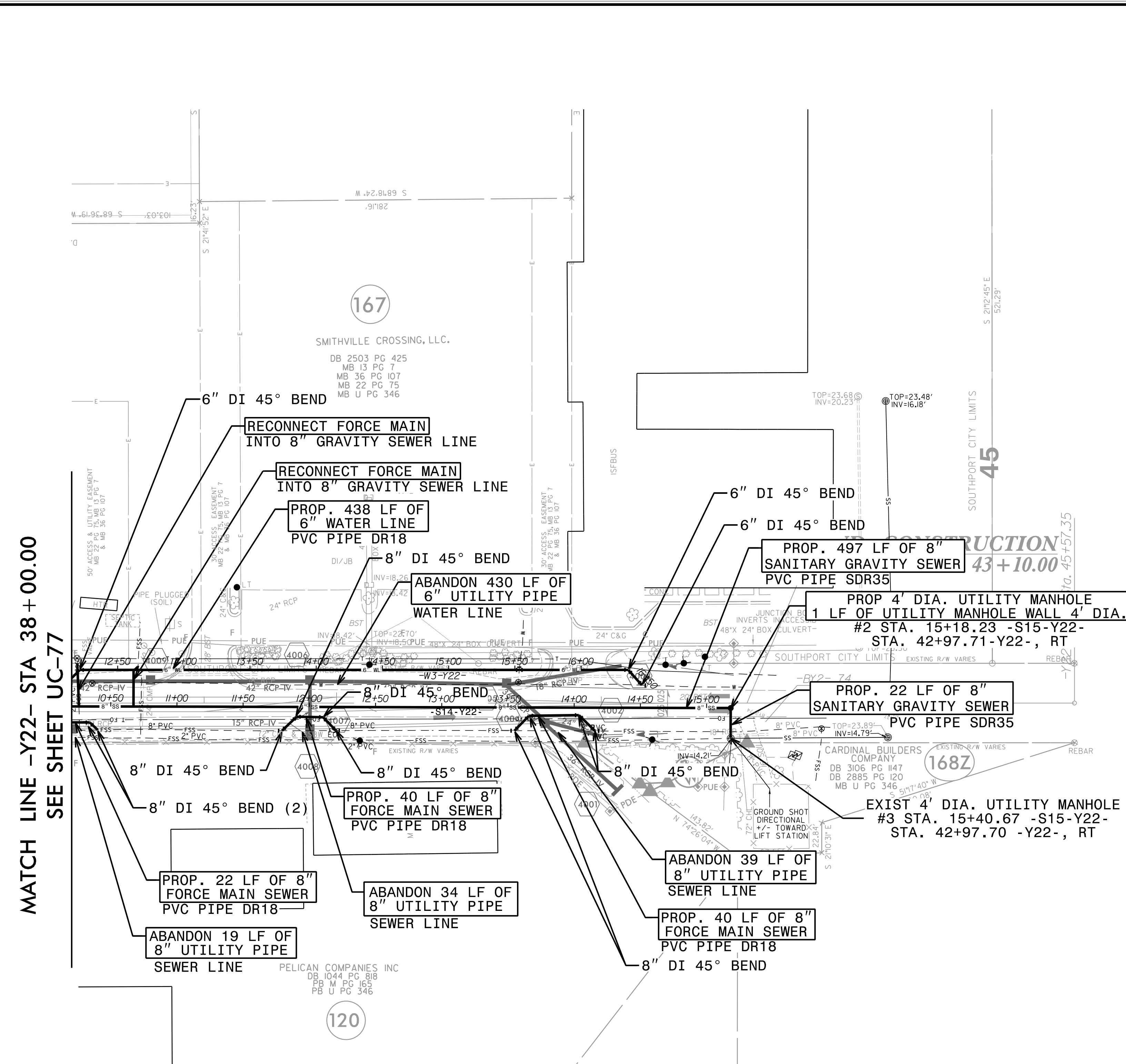
PROJECT REFERENCE NO.	SHEET NO.
R-5021	UC-78
DESIGNED BY: MEP	
DRAWN BY: MEP	
CHECKED BY: BMB	
APPROVED BY: BMB	
REVISER:	NORTH CAROLINA DEPARTMENT OF TRANSPORTATION UTILITIES ENGINEERING SEC. PHONE: (919) 707-6690 FAX: (919) 250-4151
UTILITY CONSTRUCTION PLANS ONLY	

NAD 83 NSRS 2007

UTILITY CONSTRUCTION
DOCUMENT NOT CONSIDERED FINAL
UNLESS ALL SIGNATURES COMPLETED

THE ESTIMATED QUANTITY OF DUCTILE IRON SEWER PIPE FITTING ON THIS PLAN SHEET IS 880 POUNDS. THE ACTUAL QUANTITY AND TYPE OF FITTINGS WILL VARY BASED ON FIELD CONDITIONS.

THE ESTIMATED QUANTITY OF DUCTILE IRON WATER PIPE FITTING ON THIS PLAN SHEET IS 375 POUNDS. THE ACTUAL QUANTITY AND TYPE OF FITTINGS WILL VARY BASED ON FIELD CONDITIONS.



MATCH LINE -Y22- STA 38 + 00.00
 SEE SHEET UC-77

FOR -S14-Y22- PROFILE, SEE SHEET UC-91
 FOR -W3-Y22- PROFILE, SEE SHEET UC-93



P: (919) 878-9550
 8601 Six Forks Road, Forum 1, Suite 700
 Raleigh, North Carolina 27615-3960
 NC License No. F-0112
 Engineers | Construction Managers | Planners | Scientists
 www.rkk.com
 Responsive People | Creative Solutions

5/14/99
 9/8/2021 UC-Proj\N-5021-ut-r-dj-40_UC78_psh.dgn
 I:\Users\Engineering\BMB\Projects\5021-ut-r-dj-40_UC78_psh.dgn