

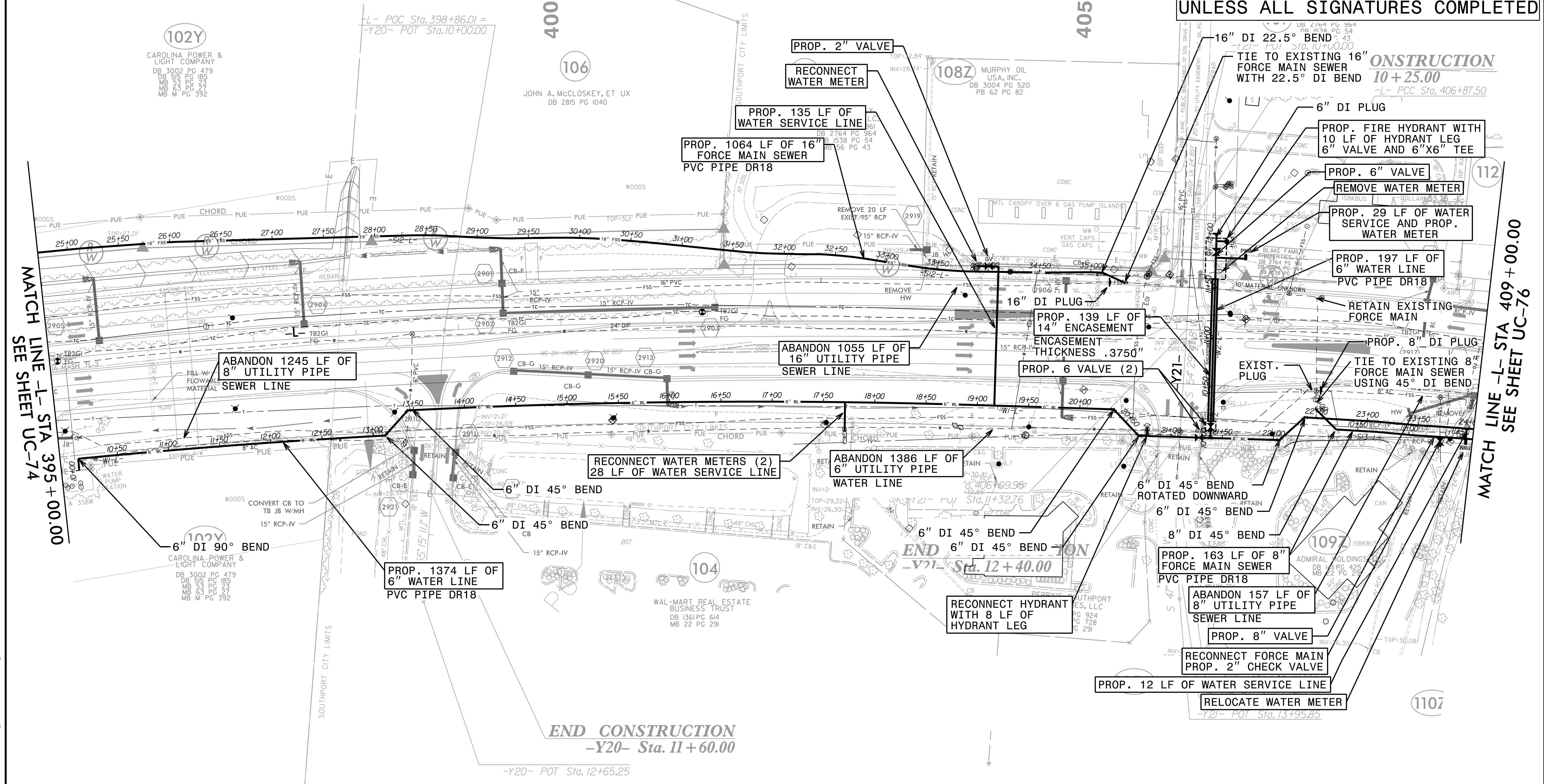
PROJECT REFERENCE NO.	SHEET NO.
R-5021	UC-75
DESIGNED BY: MEP	
DRAWN BY: MEP	
CHECKED BY: BMB	
APPROVED BY: BMB	
REVISED:	
NORTH CAROLINA DEPARTMENT OF TRANSPORTATION UTILITIES ENGINEERING SEC. PHONE: (919) 707-6690 FAX: (919) 250-4151 UTILITY CONSTRUCTION PLANS ONLY	

THE ESTIMATED QUANTITY OF DUCTILE IRON SEWER PIPE FITTING ON THIS PLAN SHEET IS 820 POUNDS. THE ACTUAL QUANTITY AND TYPE OF FITTINGS WILL VARY BASED ON FIELD CONDITIONS.

THE ESTIMATED QUANTITY OF DUCTILE IRON WATER PIPE FITTING ON THIS PLAN SHEET IS 845 POUNDS. THE ACTUAL QUANTITY AND TYPE OF FITTINGS WILL VARY BASED ON FIELD CONDITIONS.

UTILITY CONSTRUCTION

DOCUMENT NOT CONSIDERED FINAL UNLESS ALL SIGNATURES COMPLETED



MATCH LINE -L- STA 395 + 00.00 SEE SHEET UC-74

MATCH LINE -L- STA 409 + 00.00 SEE SHEET UC-76

FOR -S12-L- PROFILE, SEE SHEET UC-89
 FOR -W1-L- PROFILE, SEE SHEET UC-92
 FOR -W2-L- PROFILE, SEE SHEET UC-93

RKK
 P: (919) 878-9550
 8601 Six Forks Road, Forum 1, Suite 700
 Raleigh, North Carolina 27615-3960
 NC License No. F-0112
 Engineers | Construction Managers | Planners | Scientists
 www.rkk.com
 Responsive People | Creative Solutions

5/14/2021 UC-Proj\NR-5021\ut-r-d\29_UC75_psh.dgn