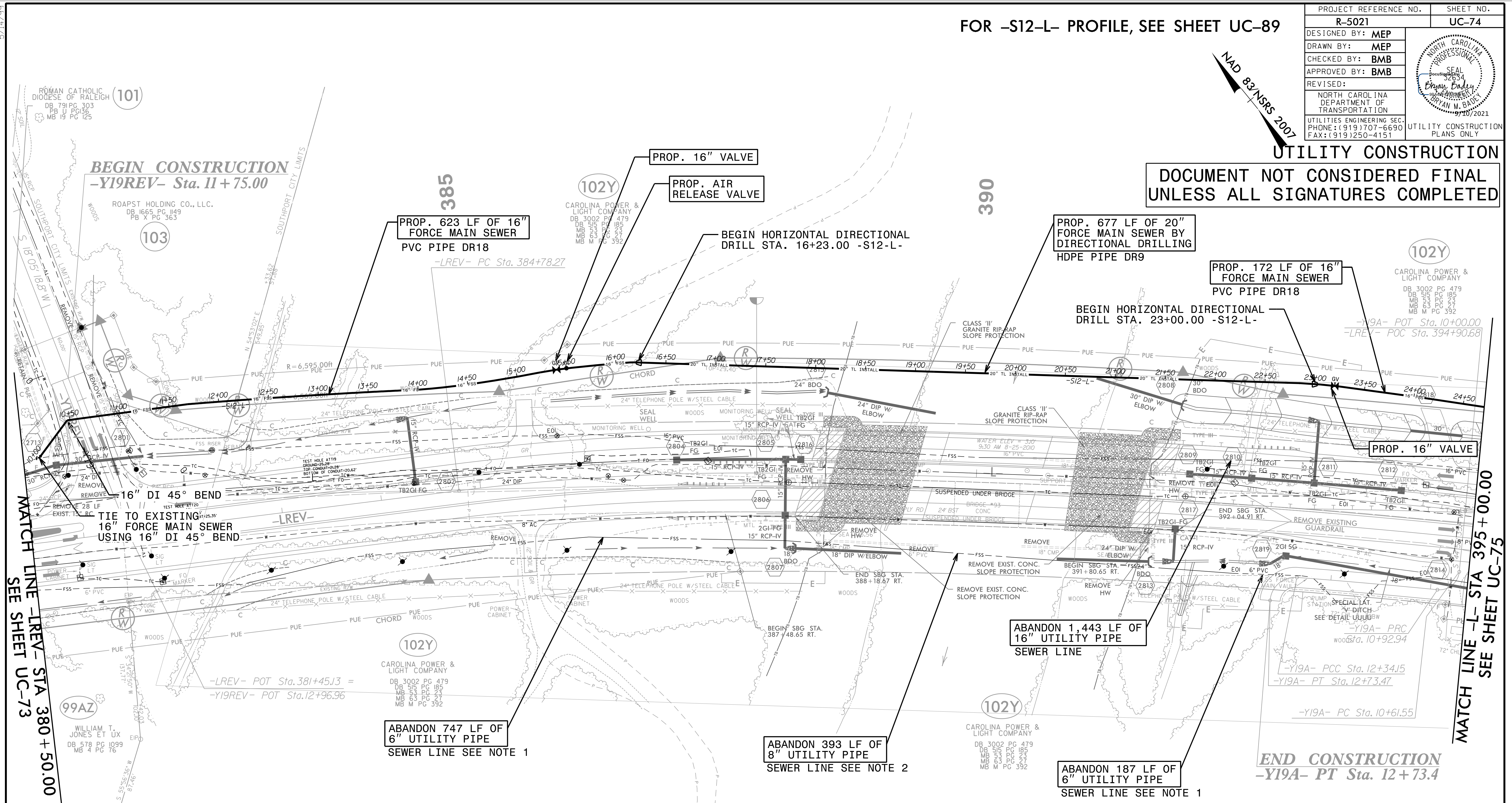


FOR -S12-L- PROFILE, SEE SHEET UC-89

| | |
|---------------------------------|---|
| PROJECT REFERENCE NO. R-5021 | SHEET NO. UC-74 |
| DESIGNED BY: MEP | |
| DRAWN BY: MEP | |
| CHECKED BY: BMB | |
| APPROVED BY: BMB | |
| REVISER: | NORTH CAROLINA DEPARTMENT OF TRANSPORTATION UTILITIES ENGINEERING SEC. PHONE: (919) 707-6690 FAX: (919) 250-4151 |
| UTILITY CONSTRUCTION PLANS ONLY | |

UTILITY CONSTRUCTION

DOCUMENT NOT CONSIDERED FINAL UNLESS ALL SIGNATURES COMPLETED



THE ESTIMATED QUANTITY OF DUCTILE IRON SEWER PIPE FITTING ON THIS PLAN SHEET IS 680 POUNDS. THE ACTUAL QUANTITY AND TYPE OF FITTINGS WILL VARY BASED ON FIELD CONDITIONS.

PRIOR TO COMMENCING WORK ON ANY TRENCHLESS INSTALLATION, PROVIDE A DESIGN FOR THE TRENCHLESS INSTALLATION CERTIFIED BY AN ENGINEER LICENSED BY THE STATE OF NORTH CAROLINA, AS REQUIRED BY SUBARTICLE 1550-3(B) OF THE STANDARD SPECIFICATIONS.

NOTES.

- EXISTING 6" FSS IS NOT IN SERVICE BUT UNDER PRESSURE ACCORDING TO UTILITY OWNER
- EXISTING 8" FSS IS NOT IN SERVICE BUT UNDER PRESSURE ACCORDING TO UTILITY OWNER

5/14/99
9/8/2021 UC-Proj\N\5021\UC-74_psh.dgn