

PROJECT REFERENCE NO.	SHEET NO.
R-5021	UC-73
DESIGNED BY: MEP	
DRAWN BY: MEP	
CHECKED BY: BMB	
APPROVED BY: BMB	
REVISER:	UTILITIES ENGINEERING SEC.
	PHONE: (919) 707-6690
	FAX: (919) 250-4151
	UTILITY CONSTRUCTION PLANS ONLY

THE ESTIMATED QUANTITY OF DUCTILE IRON SEWER PIPE FITTING ON THIS PLAN SHEET IS 4080 POUNDS. THE ACTUAL QUANTITY AND TYPE OF FITTINGS WILL VARY BASED ON FIELD CONDITIONS.

PRIOR TO COMMENCING WORK ON ANY TRENCHLESS INSTALLATION, PROVIDE A DESIGN FOR THE TRENCHLESS INSTALLATION CERTIFIED BY AN ENGINEER LICENSED BY THE STATE OF NORTH CAROLINA, AS REQUIRED BY SUBARTICLE 1550-3(B) OF THE STANDARD SPECIFICATIONS.

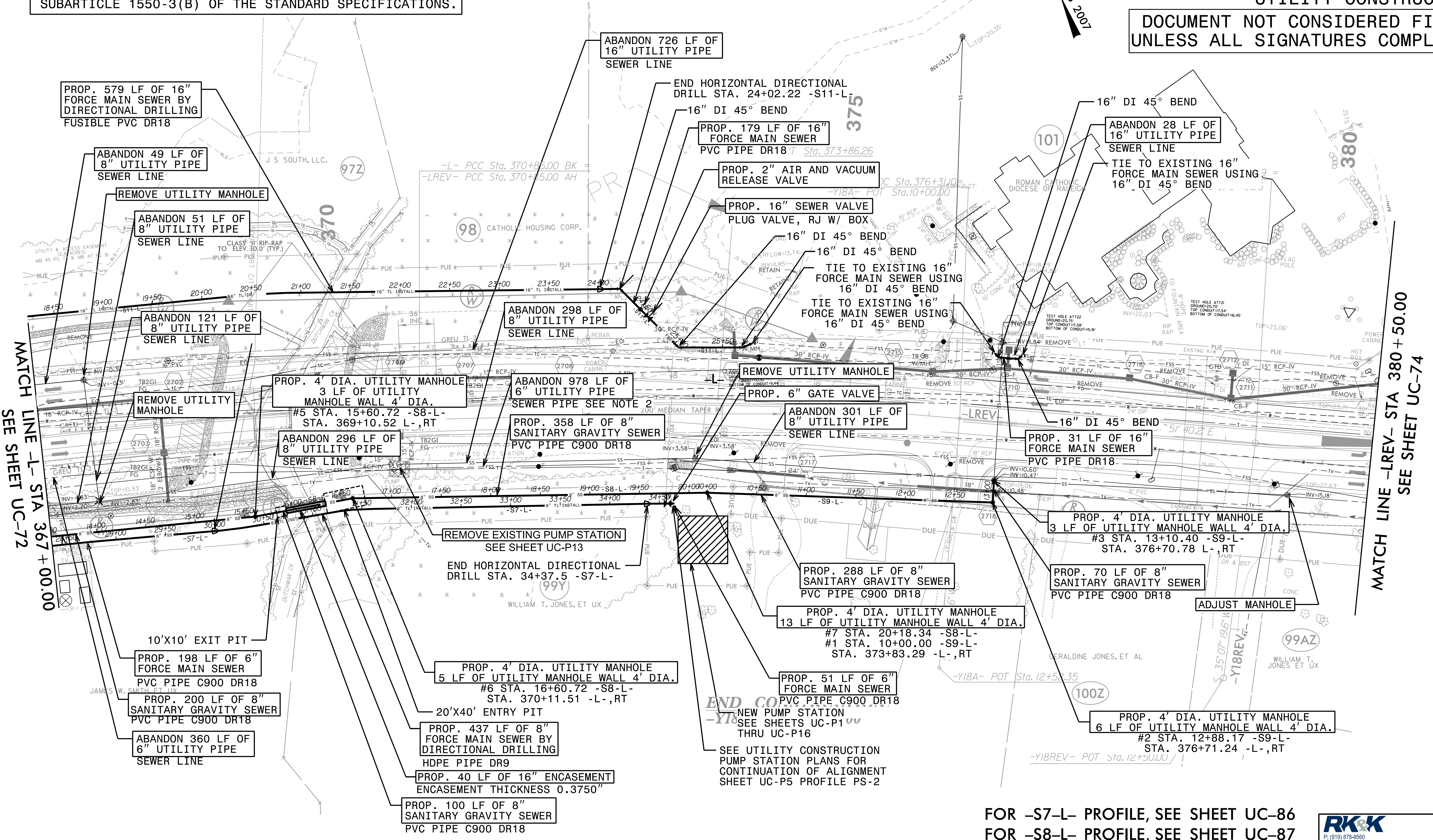
1. FORCE MAIN SEWER -S1-L- RELOCATED FLOW METER VAULT TO SHEET UC-72
2. FORCE MAIN SEWER -S7-L- LOWERED THE CROSSING DEPTH BELOW DUTCHMANS CREEK FROM 5.3' TO 10' INCREASED LENGTH OF TRENCHLESS INSTALL BY 33 LF

NOTES.

1. EXISTING 6" FSS IS NOT IN SERVICE BUT UNDER PRESSURE ACCORDING TO UTILITY OWNER

UTILITY CONSTRUCTION

DOCUMENT NOT CONSIDERED FINAL UNLESS ALL SIGNATURES COMPLETED



MATCH LINE -L- STA 367 + 00.00  
SEE SHEET UC-72

MATCH LINE -LREV- STA 380 + 50.00  
SEE SHEET UC-74

FOR -S7-L- PROFILE, SEE SHEET UC-86  
 FOR -S8-L- PROFILE, SEE SHEET UC-87  
 FOR -S9-L- PROFILE, SEE SHEET UC-87  
 FOR -S11-L- PROFILE, SEE SHEET UC-88

**RK&K**  
 P: (919) 878-9560  
 8601 Six Forks Road, Forum 1, Suite 700  
 Raleigh, North Carolina 27615-3960  
 NC License No. F-0112  
 Engineers | Construction Managers | Planners | Scientists  
 www.rk.com  
 Responsive People | Creative Solutions

5/14/99  
 I:\3\2021\UC\Projo\NR-5021\ut-rc\q27 UC73\_osh.dgn  
 11/3/2021 11:30:27 AM