

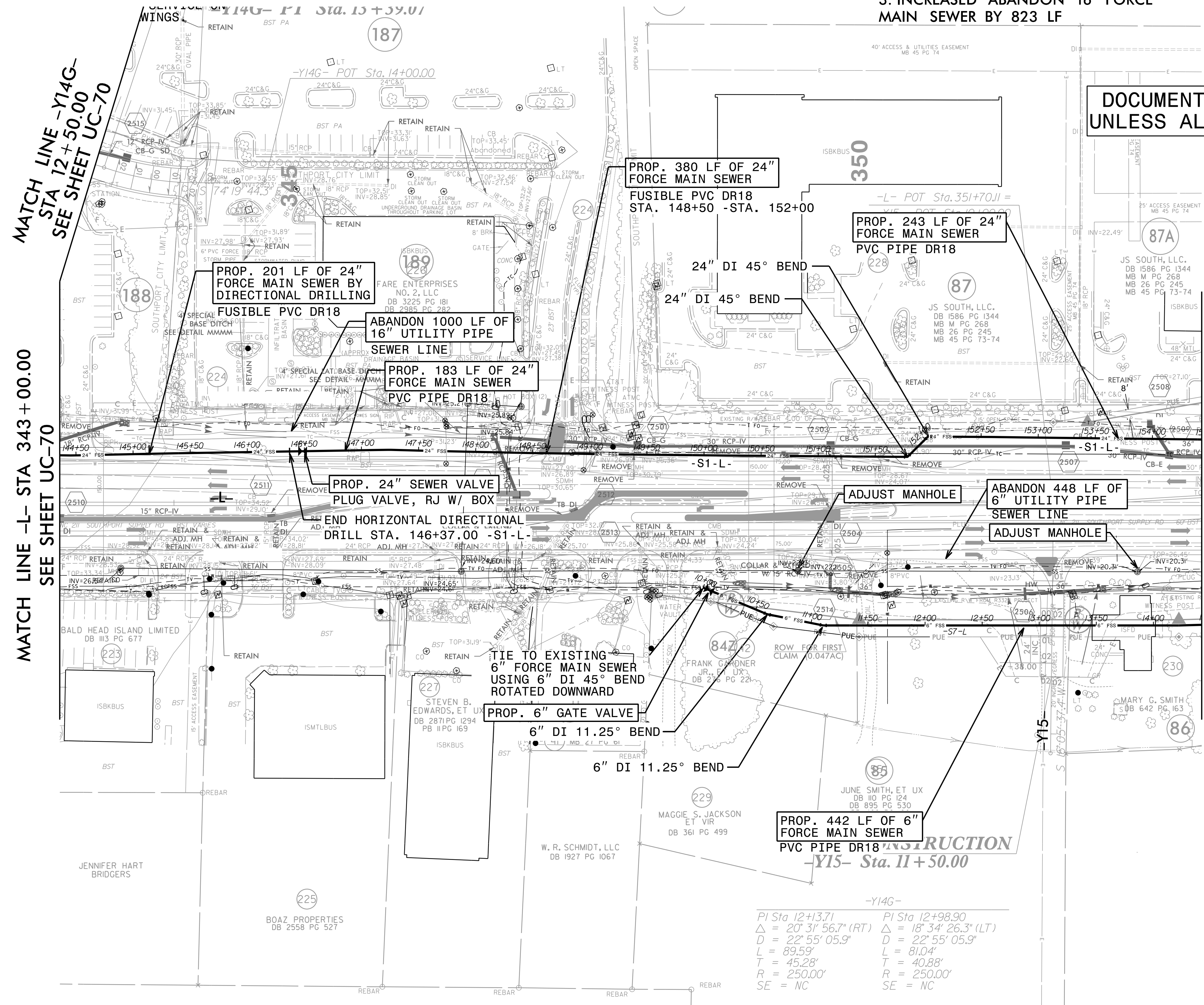
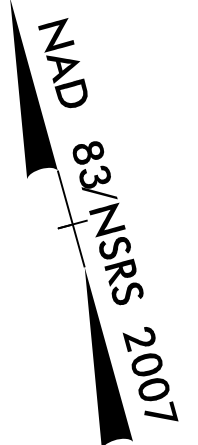
PROJECT REFERENCE NO.	SHEET NO.
R-5021	UC-71
DESIGNED BY: MEP	
DRAWN BY: MEP	
CHECKED BY: BMB	
APPROVED BY: BMB	
REVISED:	
NORTH CAROLINA DEPARTMENT OF TRANSPORTATION	
UTILITIES ENGINEERING SEC. PHONE: (919) 707-6690	UTILITY CONSTRUCTION PLANS ONLY
FAX: (919) 250-4151	

THE ESTIMATED QUANTITY OF DUCTILE IRON SEWER PIPE FITTING ON THIS PLAN SHEET IS 1510 POUNDS. THE ACTUAL QUANTITY AND TYPE OF FITTINGS WILL VARY BASED ON FIELD CONDITIONS.

1. UPSIZED 16" FSS TO 24" FSS
2. INCREASED SEWER LINE TO BE RELOCATED BY 828 LF
3. INCREASED ABANDON 16" FORCE MAIN SEWER BY 823 LF

UTILITY CONSTRUCTION

DOCUMENT NOT CONSIDERED FINAL UNLESS ALL SIGNATURES COMPLETED



MATCH LINE -Y14G- STA 12+50.00 SEE SHEET UC-70

MATCH LINE -L- STA 343+00.00 SEE SHEET UC-70

MATCH LINE -L- STA 353+00.00 SEE SHEET UC-72

PI Sta 12+13.71	PI Sta 12+98.90
Δ = 20' 31" 56.7" (RT)	Δ = 18' 34" 26.3" (LT)
D = 22' 55" 05.9"	D = 22' 55" 05.9"
L = 89.59'	L = 81.04'
T = 45.28'	T = 40.88'
R = 250.00'	R = 250.00'
SE = NC	SE = NC

FOR -S1-L- PROFILE, SEE SHEET UC-82A & 82B
FOR -S10-L- PROFILE, SEE SHEET UC-87

R: (919) 878-9560
8601 Six Forks Road, Forum 1, Suite 700
Raleigh, North Carolina 27615-3960
NC License No. F-0112
Engineers | Construction Managers | Planners | Scientists
www.rk&k.com
Responsive People | Creative Solutions

5/14/99
I:\3\2021\UC\Proj\N-5021-ut-rdy25-UC71.psthdgn
11:tes\Engineering\UC\Proj\N-5021-ut-rdy25-UC71.psthdgn