

PROJECT REFERENCE NO.	SHEET NO.
R-5021	UC-70
DESIGNED BY: MEP	
DRAWN BY: MEP	
CHECKED BY: BMB	
APPROVED BY: BMB	
REVISED BY:	
NORTH CAROLINA DEPARTMENT OF TRANSPORTATION UTILITIES ENGINEERING SECTION PHONE: (919) 707-6690 FAX: (919) 250-4151	
UTILITY CONSTRUCTION PLANS ONLY	

UTILITY CONSTRUCTION

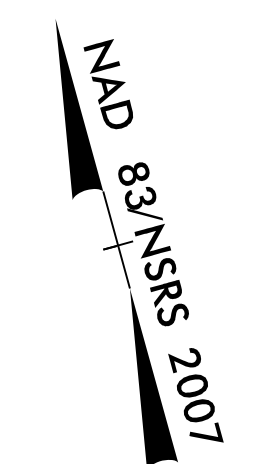
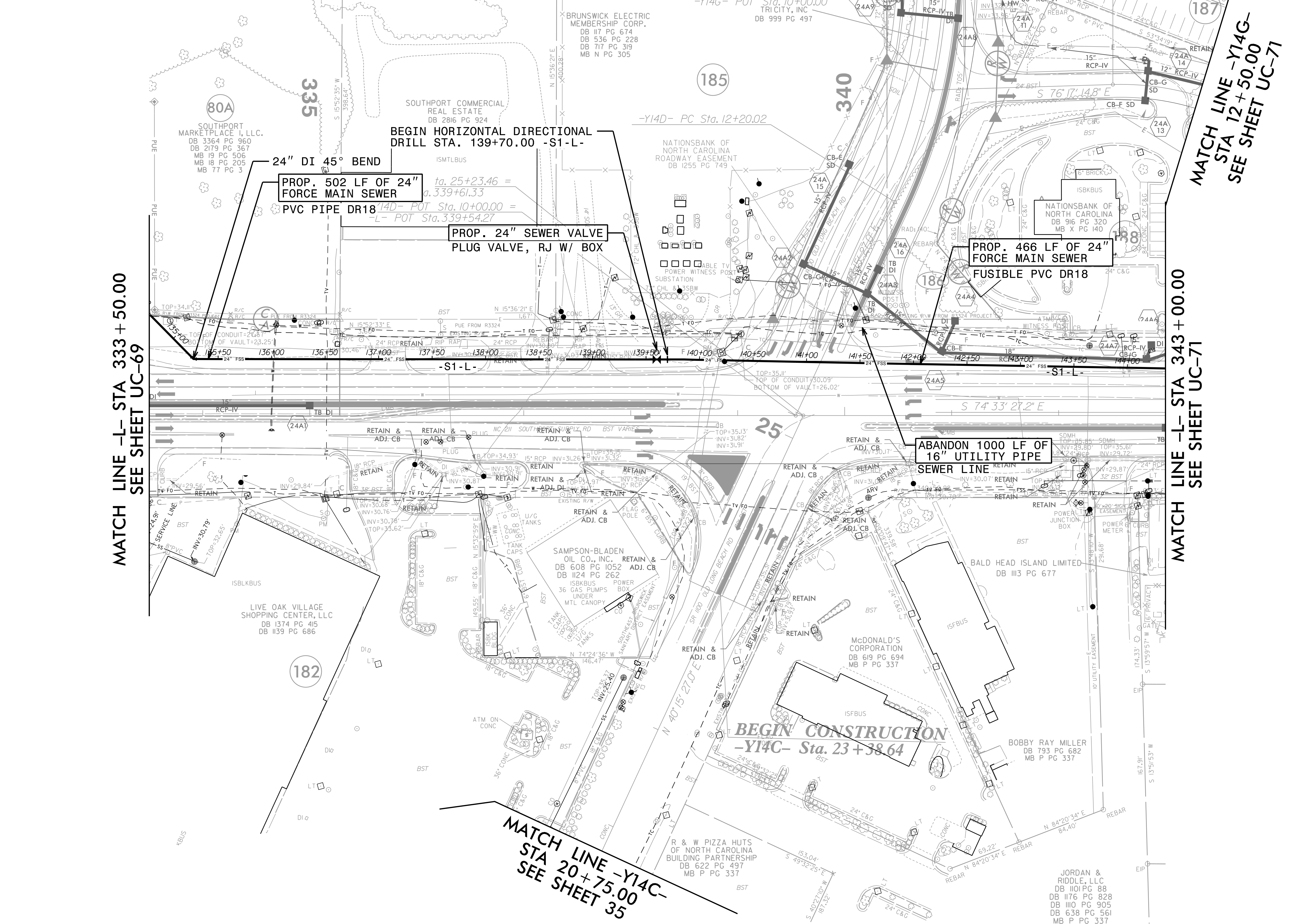
THE ESTIMATED QUANTITY OF DUCTILE IRON SEWER PIPE FITTING ON THIS PLAN SHEET IS 755 POUNDS. THE ACTUAL QUANTITY AND TYPE OF FITTINGS WILL VARY BASED ON FIELD CONDITIONS.

DO NOT DISTURB FENCE AROUND BRUNSWICK ELECTRIC PARCEL

DOCUMENT NOT CONSIDERED FINAL UNLESS ALL SIGNATURES COMPLETED

MATCH LINE -Y14D- STA 14+50.00 SEE SHEET 36

1. UPSIZED 16" FSS TO 24" FSS
 2. INCREASED ABANDON 16" FORCE MAIN SEWER BY 739 LF



5/14/99
 11/3/2021 UC-Proj\N-5021-ut-rdy\214-UC70-ps.sh.dgn
 Utilities Engineering Department

**FOR -S1-L- PROFILE, SEE SHEET UC-82A
 FOR -S5-L- PROFILE, SEE SHEET UC-85
 FOR -S6-L- PROFILE, SEE SHEET UC-85**

RK&K
 P: (919) 878-9560
 8601 Six Forks Road, Forum 1, Suite 700
 Raleigh, North Carolina 27615-3960
 NC License No. F-0112
 Engineers | Construction Managers | Planners | Scientists
 www.rk.com
 Responsive People | Creative Solutions