

PROJECT REFERENCE NO.	SHEET NO.
R-5021	UC-69
DESIGNED BY: MEP	
DRAWN BY: MEP	
CHECKED BY: BMB	
APPROVED BY: BMB	
REVISER:	
NORTH CAROLINA DEPARTMENT OF TRANSPORTATION	
UTILITIES ENGINEERING SEC. PHONE: (919) 707-6690 FAX: (919) 250-4151	UTILITY CONSTRUCTION PLANS ONLY

UTILITY CONSTRUCTION

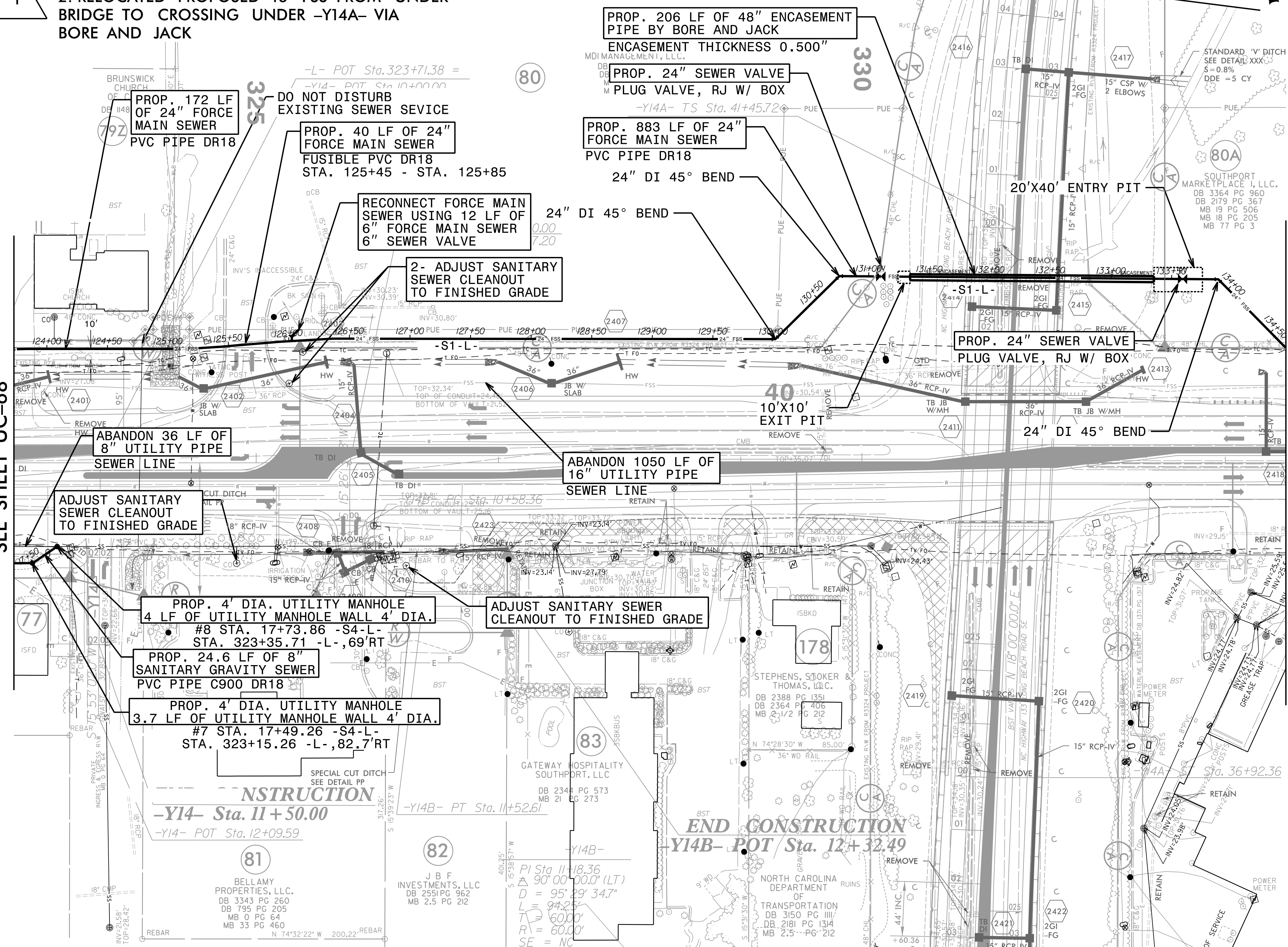
DOCUMENT NOT CONSIDERED FINAL
UNLESS ALL SIGNATURES COMPLETED

THE ESTIMATED QUANTITY OF DUCTILE IRON SEWER PIPE FITTING ON THIS PLAN SHEET IS 3775 POUNDS. THE ACTUAL QUANTITY AND TYPE OF FITTINGS WILL VARY BASED ON FIELD CONDITIONS.

- UPSIZED 16" FSS TO 24" FSS
- RELOCATED PROPOSED 16" FSS FROM UNDER BRIDGE TO CROSSING UNDER -Y14A- VIA BORE AND JACK

MATCH LINE -L- STA 323 + 00.00
SEE SHEET UC-68

MATCH LINE -L- STA 333 + 50.00
SEE SHEET UC-70



MATCH LINE -Y14A- STA 35 + 50.00
SEE SHEET 35

FOR -S1-L- PROFILE, SEE SHEET UC-82A
FOR -S4-L- PROFILE, SEE SHEET UC-85

RK&K
P: (919) 878-9560
8601 Six Forks Road, Forum 1, Suite 700
Raleigh, North Carolina 27615-3960
NC License No. F-0112
Engineers | Construction Managers | Planners | Scientists
www.rk.com
Responsive People | Creative Solutions

5/14/99
I:\3_2021\UC\Proj\N-5021\ut-r-dj24_UC69_psh.dgn