

THE ESTIMATED QUANTITY OF DUCTILE IRON SEWER PIPE FITTING ON THIS PLAN SHEET IS 1510 POUNDS. THE ACTUAL QUANTITY AND TYPE OF FITTINGS WILL VARY BASED ON FIELD CONDITIONS.

FOR -S1-L- PROFILE, SEE SHEET UC-82 AND UC-82A
 FOR -S3-L- PROFILE, SEE SHEET UC-84
 FOR -S4-L- PROFILE, SEE SHEET UC-85

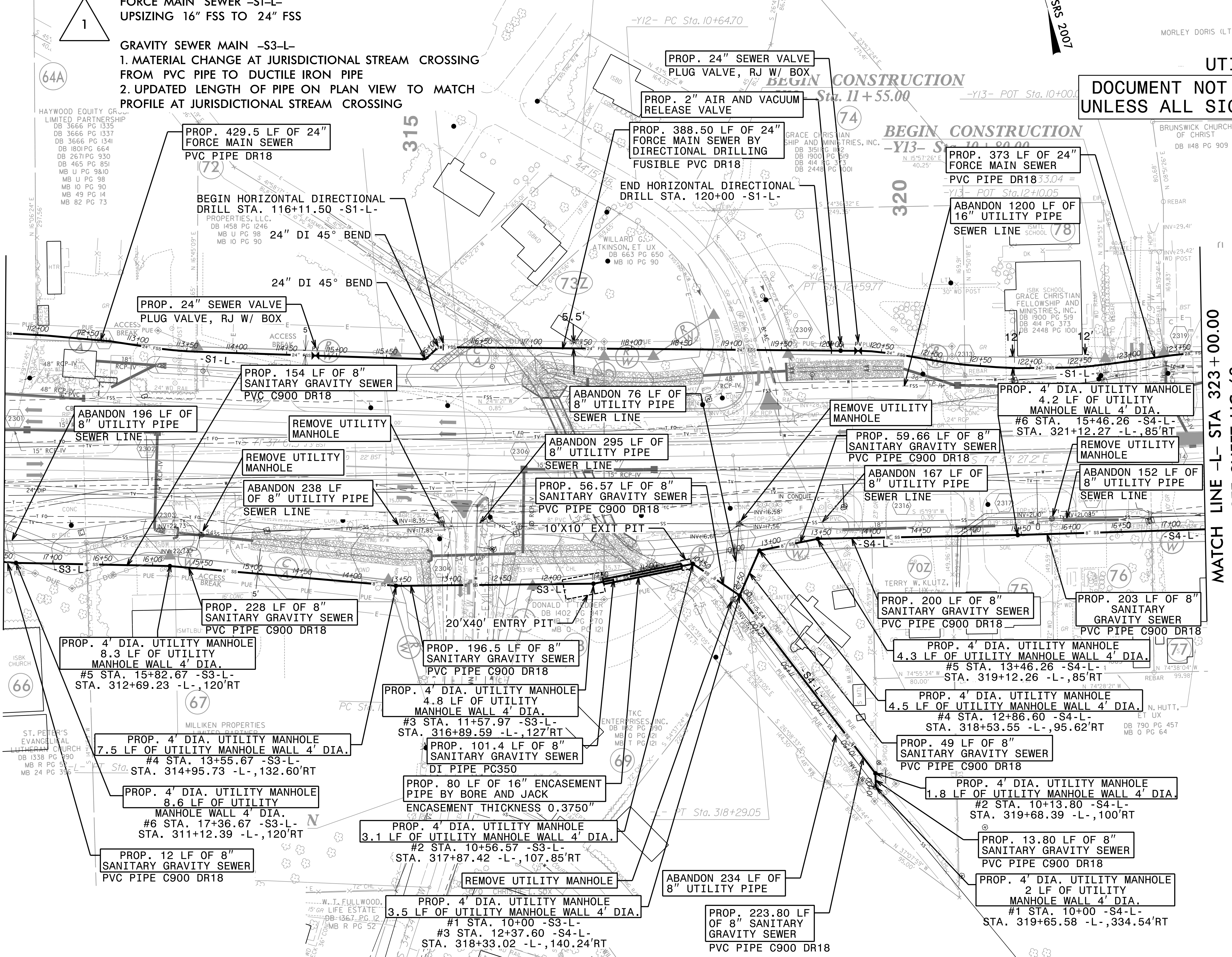
1
 FORCE MAIN SEWER -S1-L- UPSIZING 16" FSS TO 24" FSS

GRAVITY SEWER MAIN -S3-L-
 1. MATERIAL CHANGE AT JURISDICTIONAL STREAM CROSSING FROM PVC PIPE TO DUCTILE IRON PIPE
 2. UPDATED LENGTH OF PIPE ON PLAN VIEW TO MATCH PROFILE AT JURISDICTIONAL STREAM CROSSING

UTILITY CONSTRUCTION
 DOCUMENT NOT CONSIDERED FINAL
 UNLESS ALL SIGNATURES COMPLETED

MATCH LINE -L- STA 311+00.00
 SEE SHEET UC-67

MATCH LINE -L- STA 323+00.00
 SEE SHEET UC-69



5/14/99
 I:\3\2021\UC\Proj\Proj\5021-ut-r-dj23_UC68_psh.dgn
 11/3/2021 10:19:19 AM
 11/3/2021 10:19:19 AM