

PROJECT REFERENCE NO.	SHEET NO.
R-5021	UC-60
DESIGNED BY: MEP	
DRAWN BY: MEP	
CHECKED BY: BMB	
APPROVED BY: BMB	
REVISED:	NORTH CAROLINA DEPARTMENT OF TRANSPORTATION
UTILITIES ENGINEERING SEC. PHONE: (919) 707-6690 FAX: (919) 250-4151	UTILITY CONSTRUCTION PLANS ONLY

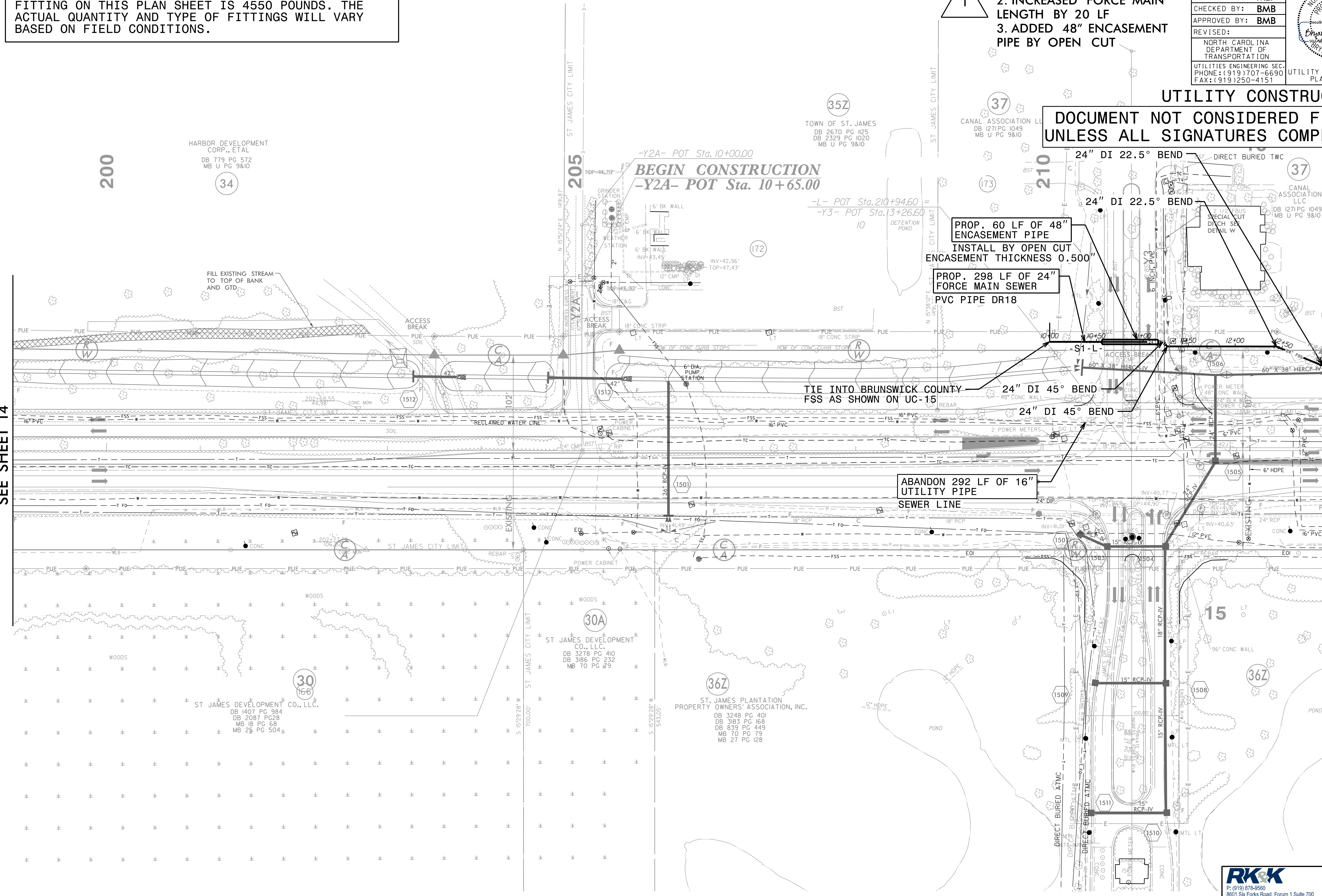
THE ESTIMATED QUANTITY OF DUCTILE IRON SEWER PIPE FITTING ON THIS PLAN SHEET IS 4550 POUNDS. THE ACTUAL QUANTITY AND TYPE OF FITTINGS WILL VARY BASED ON FIELD CONDITIONS.

1. UPSIZED 16" FSS TO 24" FSS
2. INCREASED FORCE MAIN LENGTH BY 20 LF
3. ADDED 48" ENCASEMENT PIPE BY OPEN CUT

UTILITY CONSTRUCTION
DOCUMENT NOT CONSIDERED FINAL
UNLESS ALL SIGNATURES COMPLETED

MATCH LINE -L- STA 199+00.00
SEE SHEET 14

MATCH LINE -L- STA 213+00.00
SEE SHEET UC-61



11/3/2021 UC-Plan\Proj\5021\15-UC60.psh.dgn
 5/14/99

RK&K
 P: (919) 878-9560
 8601 Six Forks Road, Forum 1, Suite 700
 Raleigh, North Carolina 27615-3960
 NC License No. F-0112
 Engineers | Construction Managers | Planners | Scientists
 www.rk.com
 Responsive People | Creative Solutions

FOR -S1-L- PROFILE, SEE SHEET UC-79