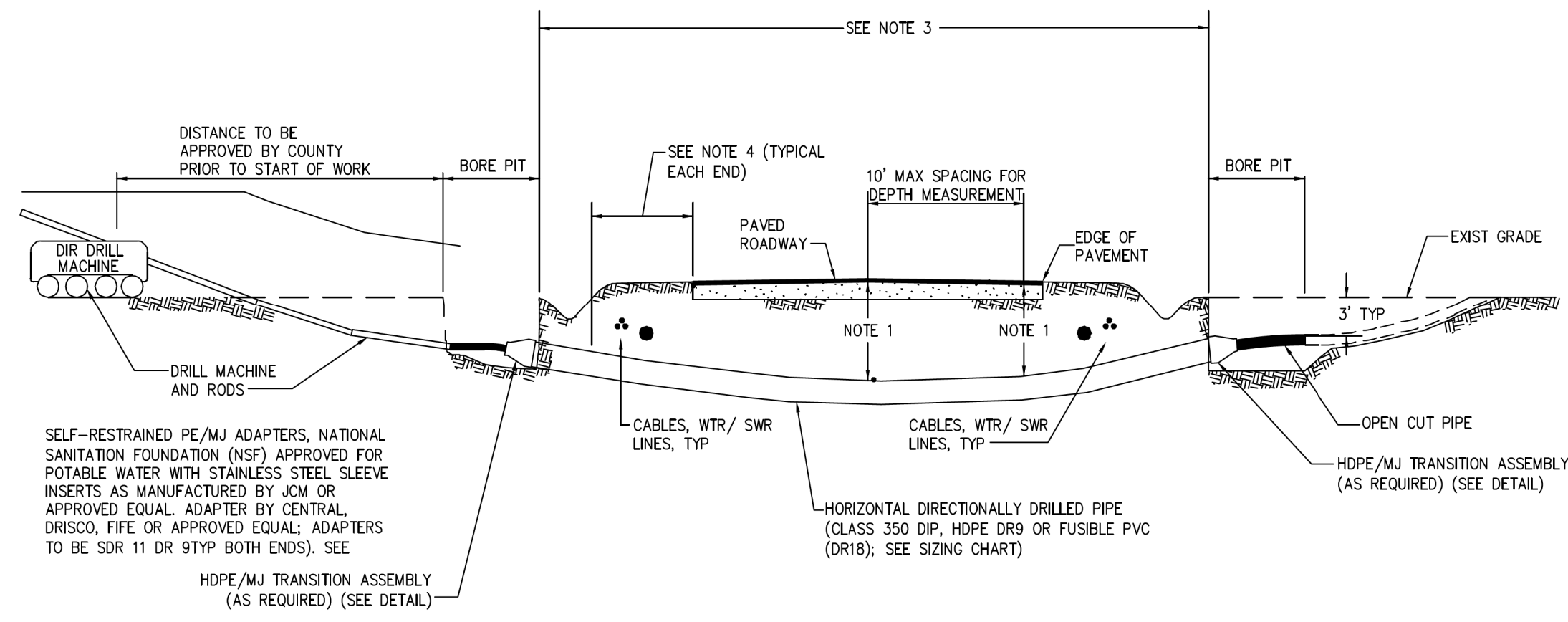




**UTILITY CONSTRUCTION**  
**DOCUMENT NOT CONSIDERED FINAL**  
**UNLESS ALL SIGNATURES COMPLETED**



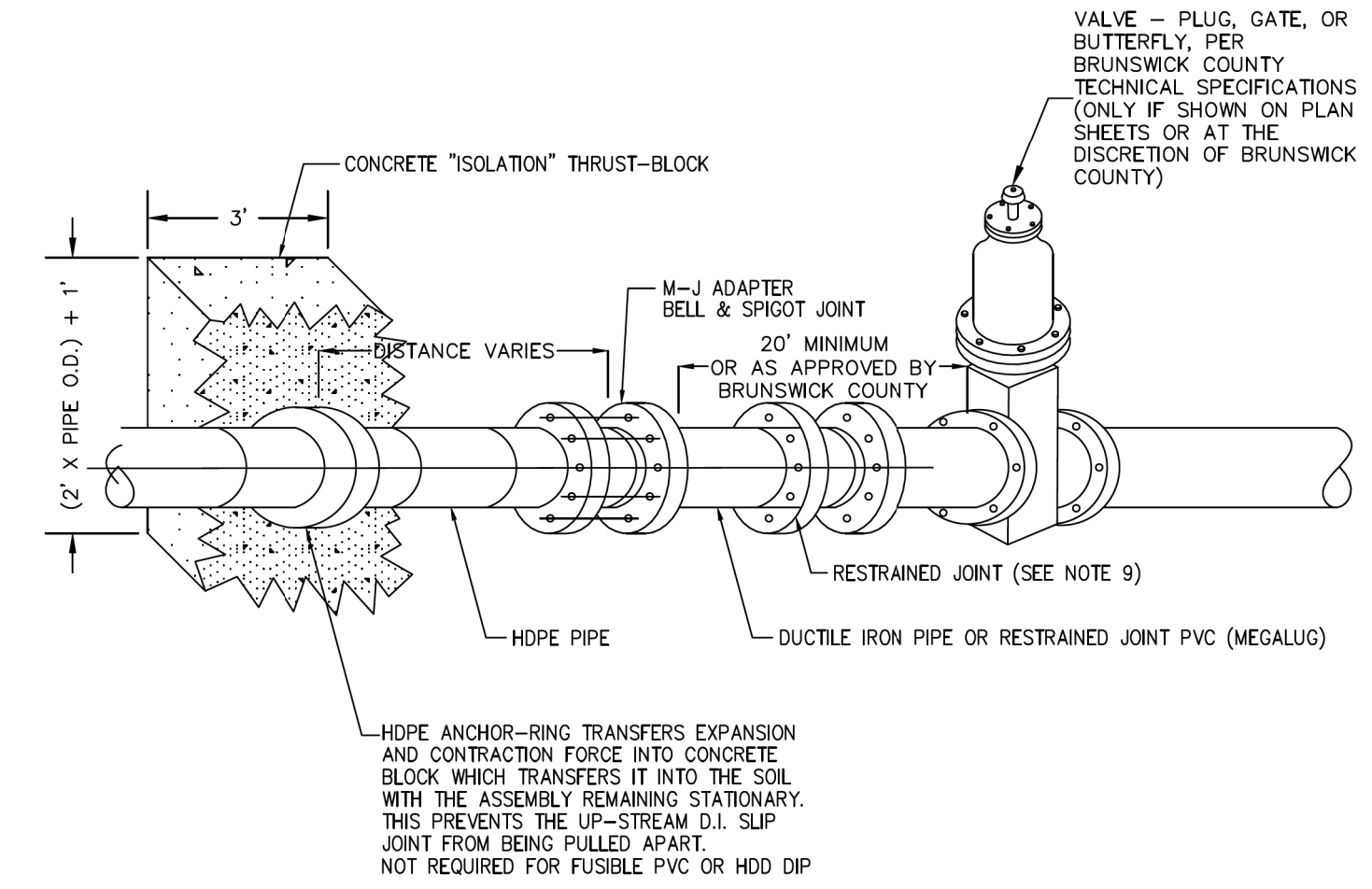
HDPE DIAMETER CONVERSION TABLE

NOMINAL OPEN CUT PIPE SIZE (INCHES)	NOMINAL HDPE DR9 HD PIPE SIZE (INCHES)
3	3
4	6
6	8
8	10
10	12
12	16
14	18
16	20
18	24
20	24
24	30
30	36

- NOTES:
- AN AS-BUILT PLAN AND PROFILE SHALL BE PROVIDED FROM ENTRY TO EXIT FOR EACH DIRECTIONAL BORE SECTION BY THE DIRECTIONAL BORE CONTRACTOR. THIS SHALL INCLUDE ACCURATE HORIZONTAL AND VERTICAL DIMENSIONS AND SHALL MEET OR EXCEED NCDOT VERTICAL REQUIREMENTS FROM HD PIPE TO EDGE OF PAVEMENT.
  - ALL BORE SECTIONS SHALL BE HYDROSTATICALLY TESTED PER COUNTY STANDARDS AFTER INSTALLATION, AND PRIOR TO CONNECTION TO THE OPEN CUT WATER/SEWER LINE. A FINAL TEST WILL BE A PART OF THE TOTAL MAIN LINE SYSTEM TEST.
  - LENGTH OF CROSSING, LOCATION OF INSPECTION/OBSERVATION EXCAVATION, NUMBER OF HD PIPE JOINTS, LOCATION OF DRILL MACHINE, AUGER ENTRANCE LOCATION AND TIE-IN POINTS ARE TO BE APPROVED BY COUNTY PRIOR TO ANY START OF WORK.
  - ON CONVENTIONAL HIGHWAYS, AS A MINIMUM, THE HD PIPE SHALL EXTEND TO THE SHOULDER BREAK OR 10 FEET BEYOND THE EDGE OF PAVEMENT ON FILL SLOPES, WHICHEVER IS GREATER; 3 FEET BEYOND THE DITCH LINE IN CUTS; AND ON CURBED SECTIONS TO THE BACK OF THE SIDEWALK AREA. ON FREEWAYS, EXPRESSWAYS, AND OTHER CONTROLLED ACCESS HIGHWAYS, THE HD PIPE WILL BE REQUIRED TO EXTEND TO THE ACCESS CONTROL LINES, TO THE OUTSIDE OF FRONTAGE ROADS, OR A SUFFICIENT DISTANCE TO ALLOW FOR FUTURE HIGHWAY IMPROVEMENTS, OR AS REQUIRED BY THE NCDOT ENCROACHMENT AGREEMENT.
  - THE BORE DEVELOPED FOR THE DIRECTIONALLY DRILLED PIPE SHALL BE KEPT AT A MINIMUM DIAMETER FOR THE PIPE INSTALLATION. THE AUGER HEAD SIZE SHALL BE APPROVED BY THE COUNTY PRIOR TO THE START OF WORK.
  - HORIZONTAL DIRECTIONAL DRILL OF NCDOT STATE ROADS TO BE APPROVED BY NCDOT PRIOR TO CONSTRUCTION. PIPE MATERIAL AND THICKNESS MAY VARY.
  - THE CONTRACTOR SHALL ALLOW SUFFICIENT LENGTHS OF PIPE TO EXTEND PAST THE TERMINATION POINT TO ALLOW FOR CONTRACTION. PULLED HD PIPE SHALL BE ALLOWED TO RELAX 7 DAYS OR THE AMOUNT OF TIME RECOMMENDED BY THE MANUFACTURER PRIOR TO MAKING CONNECTIONS.
  - FUSIBLE PVC HAS BEEN APPROVED FOR USE WITHIN NCDOT RIGHT-OF-WAYS.
  - MINIMUM OF (3) RESTRAINED JOINTS ARE REQUIRED UPSTREAM AND DOWNSTREAM OF DIP/HDPE/FUSIBLE PVC MJ ADAPTER ON EACH END OF THE HORIZONTAL DIRECTIONALLY DRILLED PIPE UNLESS OTHERWISE APPROVED BY BRUNSWICK COUNTY.

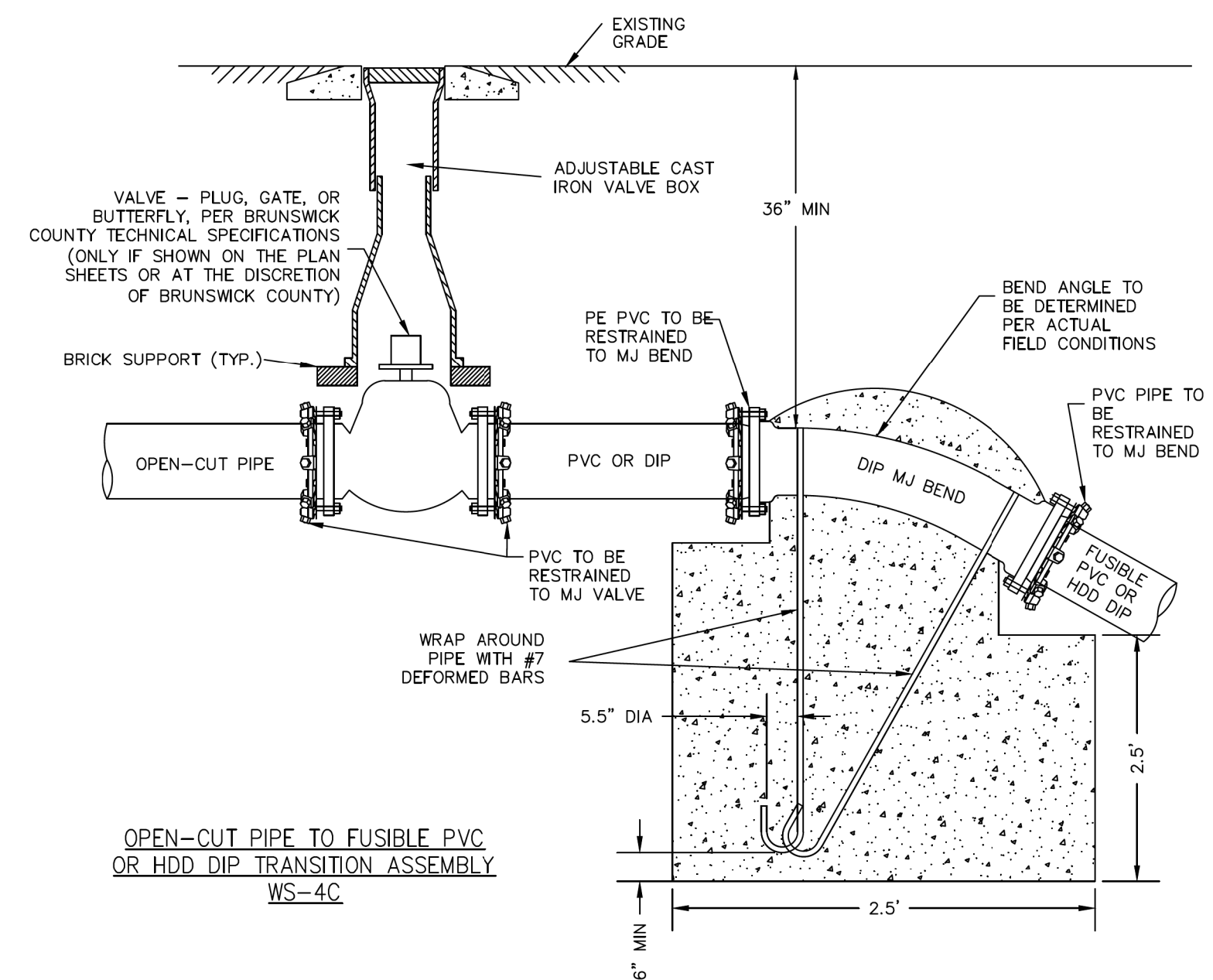
SELF-RESTRAINED PE/MJ ADAPTERS, NATIONAL SANITATION FOUNDATION (NSF) APPROVED FOR POTABLE WATER WITH STAINLESS STEEL SLEEVE INSERTS AS MANUFACTURED BY JOM OR APPROVED EQUAL ADAPTER BY CENTRAL, DRISCO, FIFE OR APPROVED EQUAL ADAPTERS TO BE SDR 11 DR 9TYP BOTH ENDS. SEE HDPE/MJ TRANSITION ASSEMBLY (AS REQUIRED) (SEE DETAIL)

HDPE/MJ TRANSITION ASSEMBLY WS-4A

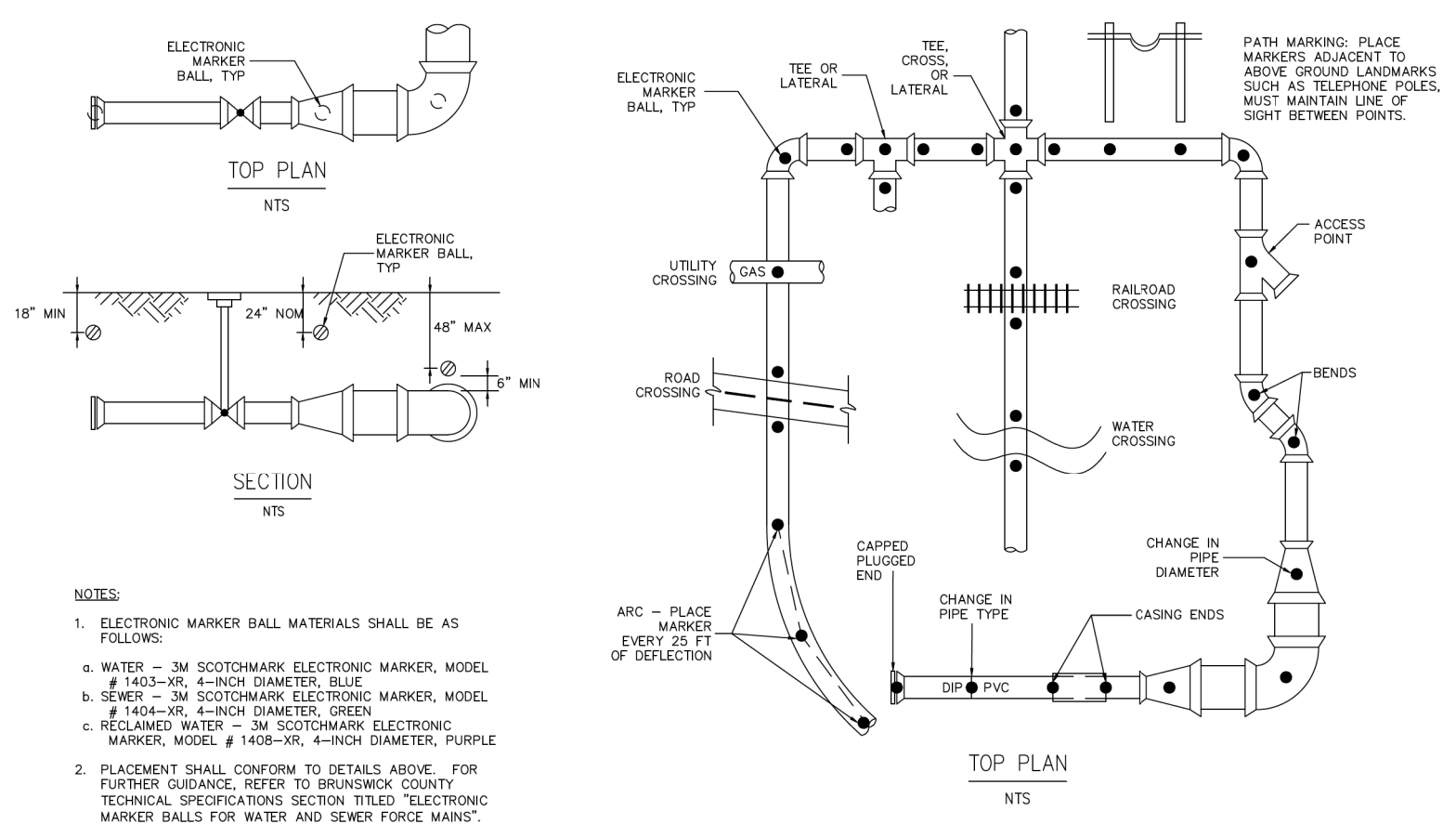


HDPE/MJ TRANSITION ASSEMBLY WS-4B

**DIRECTIONAL DRILL**  
**DETAIL WS-4**



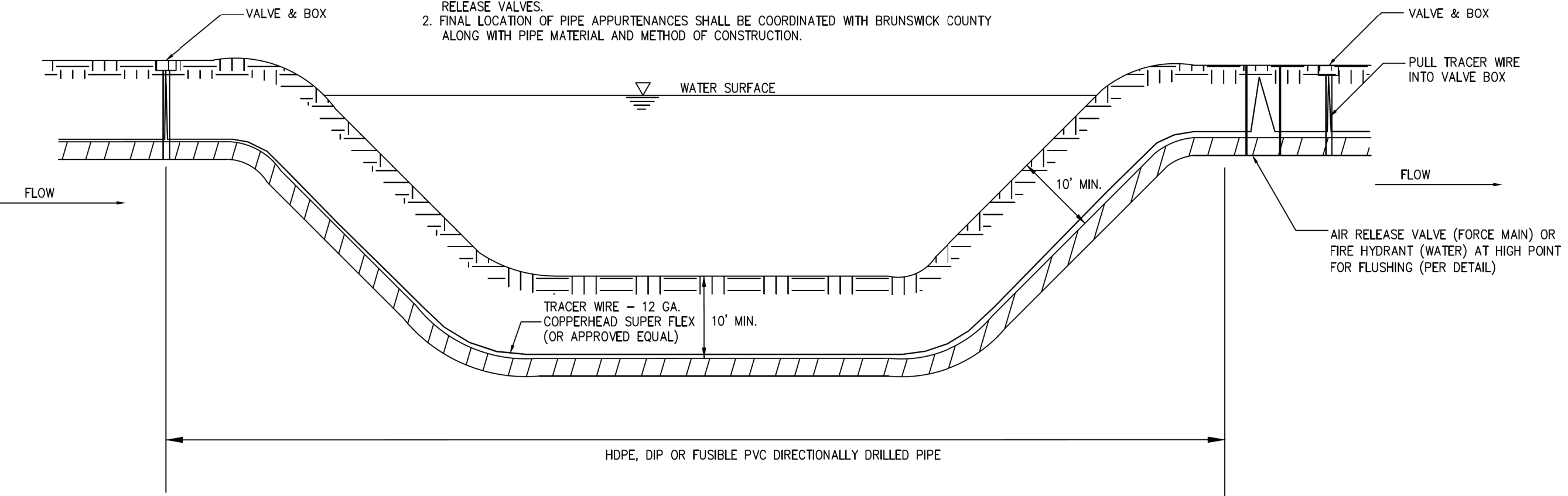
OPEN-CUT PIPE TO FUSIBLE PVC OR HDD DIP TRANSITION ASSEMBLY WS-4C



ELECTRONIC MARKER BALL PLACEMENT DETAIL

- NOTES:
- ELECTRONIC MARKER BALL MATERIALS SHALL BE AS FOLLOWS:  
 4. WATER - 3M SCOTCHMARK ELECTRONIC MARKER, MODEL # 1403-XR, 4-INCH DIAMETER, BLUE  
 5. SEWER - 3M SCOTCHMARK ELECTRONIC MARKER, MODEL # 1404-XR, 4-INCH DIAMETER, GREEN  
 6. RECLAIMED WATER - 3M SCOTCHMARK ELECTRONIC MARKER, MODEL # 1408-XR, 4-INCH DIAMETER, PURPLE
  - PLACEMENT SHALL CONFORM TO DETAILS ABOVE. FOR FURTHER GUIDANCE, REFER TO BRUNSWICK COUNTY TECHNICAL SPECIFICATIONS SECTION TITLED "ELECTRONIC MARKER BALLS FOR WATER AND SEWER FLOW MARKING".

- NOTES:
- THIS DETAIL IS A GENERAL SCHEMATIC SHOWING ISOLATION VALVE LOCATIONS AND AIR RELEASE VALVES.
  - FINAL LOCATION OF PIPE APPURTENANCES SHALL BE COORDINATED WITH BRUNSWICK COUNTY ALONG WITH PIPE MATERIAL AND METHOD OF CONSTRUCTION.



VALVE LOCATIONS FOR DIRECTIONAL DRILL OF PIPE UNDER WETLANDS/WATER BODY DETAIL WS-5

5/14/99

9/8/2021 C:\Users\UCV-Pro\OneDrive\Projects\1906021.Uc.dtl UC59B.psh.dgn