

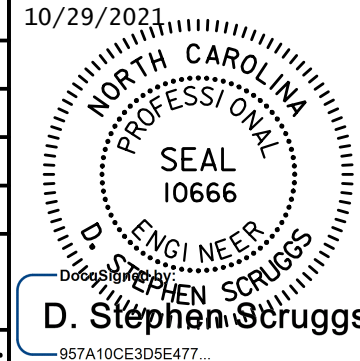
NOTES
1. SEE SHEET UC-57 FOR PROFILE OF NEW WATER MAIN AND SHEET UC-53 FOR SEWER.

The estimated quantity of Ductile Iron Sewer Pipe Fittings on this plan sheet is 7,465 pounds. The actual quantity and type of fittings will vary based on field conditions.

The estimated quantity of Ductile Iron Water Pipe Fittings on this plan sheet is 3,740 pounds. The actual quantity and type of fittings will vary based on field conditions.

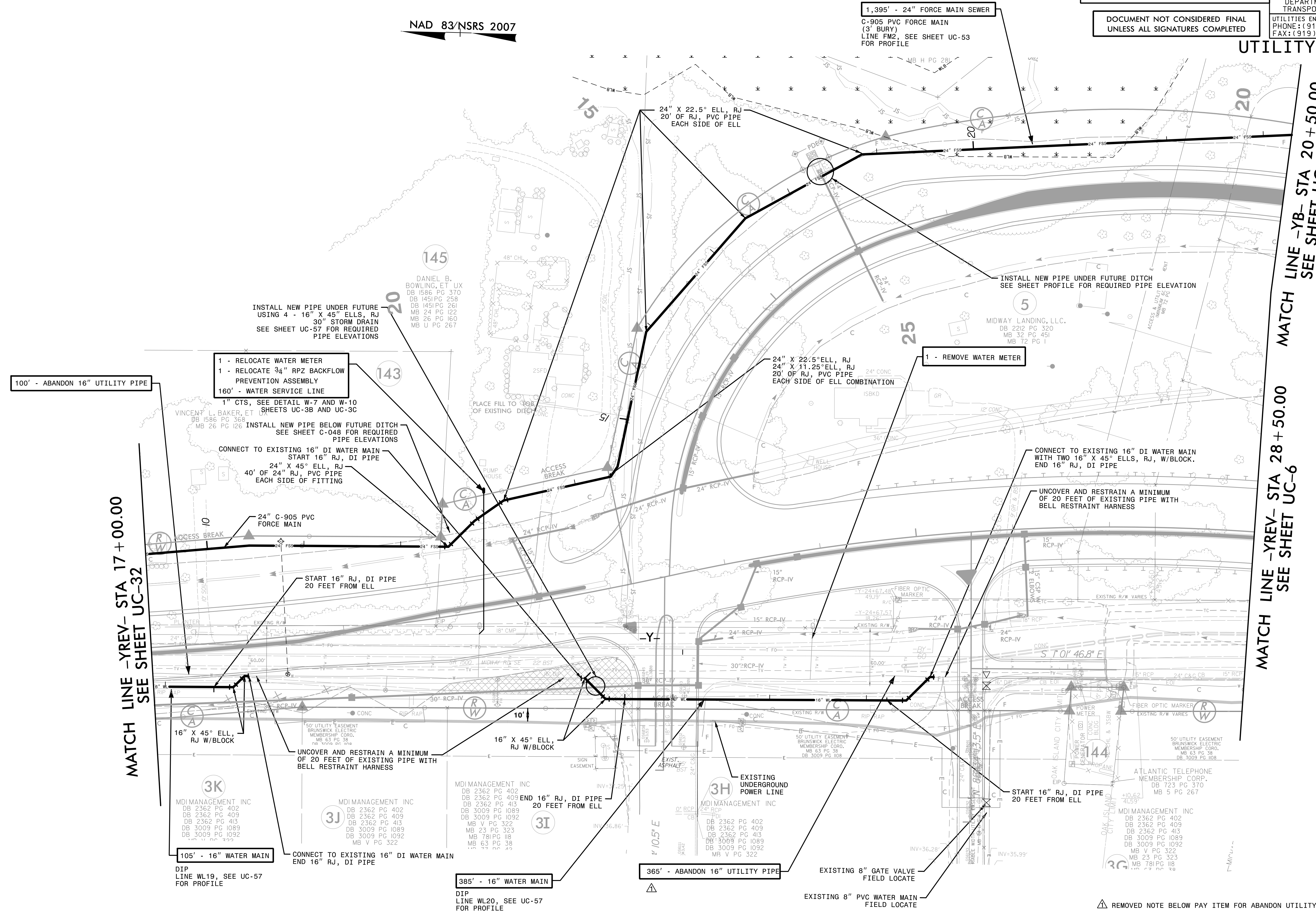
Prepared In the Office of:
AECOM
AECOM TECHNICAL SERVICES OF NORTH CAROLINA, INC.
701 CORPORATE CENTER DRIVE, SUITE 475, RALEIGH, NC 27607
919-854-6200 919-854-6259 (fax)
F-0342

PROJECT REFERENCE NO.	R-5021	SHEET NO.	UC-33
DESIGNED BY:		DATE:	10/29/2021
DRAWN BY:			
CHECKED BY:			
APPROVED BY:			
REVISED:			
NORTH CAROLINA DEPARTMENT OF TRANSPORTATION			
UTILITIES ENGINEERING SEC. PHONE: (919) 707-6690 FAX: (919) 250-4151			



DOCUMENT NOT CONSIDERED FINAL UNLESS ALL SIGNATURES COMPLETED

UTILITY CONSTRUCTION



MATCH LINE -YREV- STA 17 + 00.00
SEE SHEET UC-32

MATCH LINE -YB- STA 20 + 50.00
SEE SHEET UC-6

MATCH LINE -YREV- STA 28 + 50.00
SEE SHEET UC-6

DATE: 10/19/2021
TIME: 10:50:56 AM
DB: Z:\Projects\UTILITY\Projects\6048203\900_MerA\916_Utility Construction\2021_REV\VISIONS\R-5021_UC-F51433.dgn

△ REMOVED NOTE BELOW PAY ITEM FOR ABANDON UTILITY PIPE PER ADDENDUM NO. 1