

NOTES

- SEE SHEET UC-57 AND UC-53 FOR PROFILE OF NEW WATER MAIN, AND SHEET UC-53 FOR SEWER.
- CONTRACTOR SHALL INSTALL NEW PIPE FROM CONNECTION POINT TO CONNECTION POINT. PRIOR TO MAKING THE FINAL CONNECTIONS, THE CONTRACTOR SHALL INSTALL TEMPORARY PLUGS AT EACH POINT AND THEN PRESSURE TEST, FLUSH AND DISINFECT THE NEW MAIN.

Prepared In the Office of:

AECOM

AECOM TECHNICAL SERVICES OF NORTH CAROLINA, INC.
701 CORPORATE CENTER DRIVE, SUITE 475, RALEIGH, NC 27607
919-854-6200 919-854-6259 (fax)
F - 0342

PROJECT REFERENCE NO. R-5021 SHEET NO. UC-32

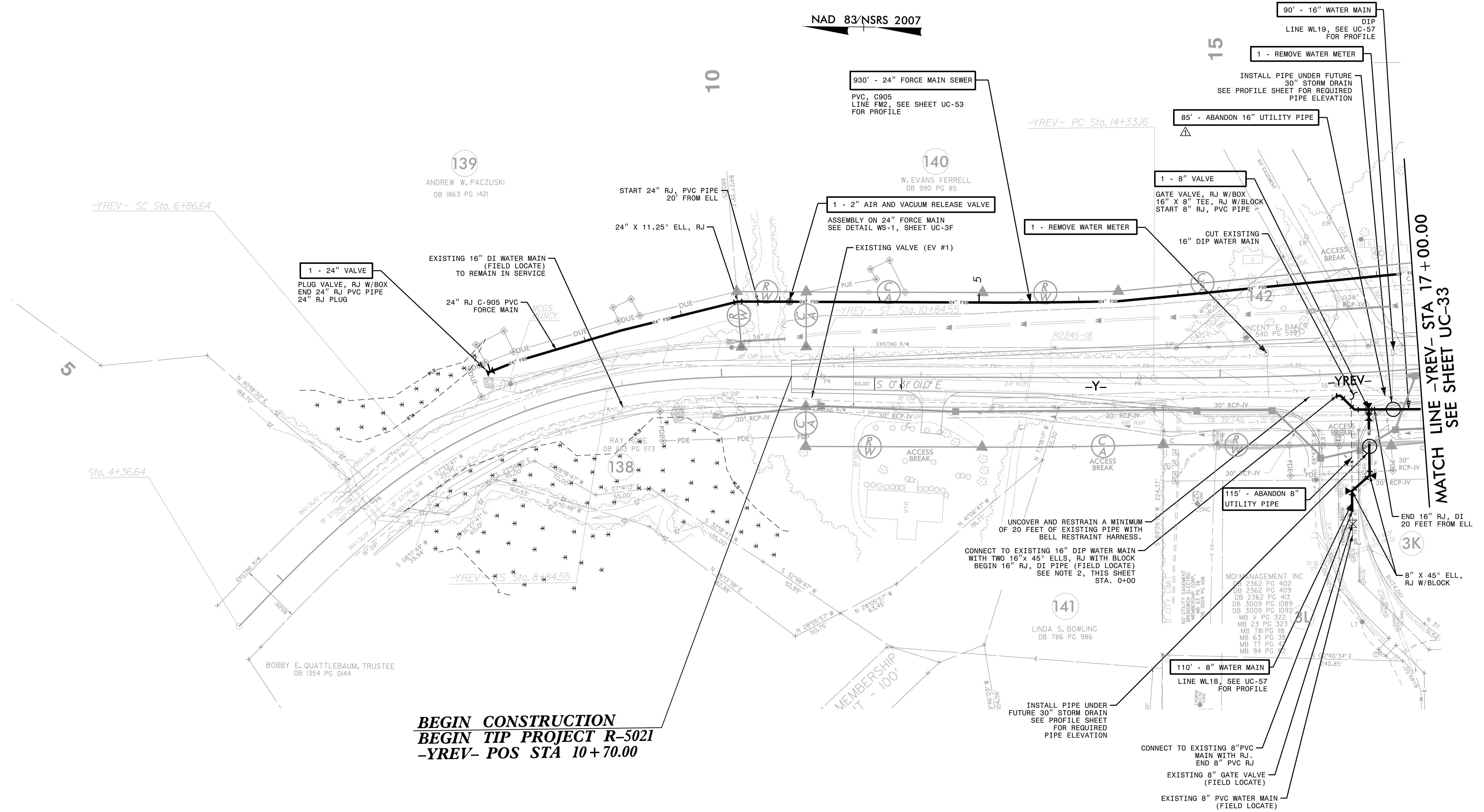
DESIGNED BY: 10/29/2021
DRAWN BY:
CHECKED BY:
APPROVED BY:
REVISED:

NORTH CAROLINA DEPARTMENT OF TRANSPORTATION
UTILITIES ENGINEERING SEC.
PHONE: (919) 707-6690
FAX: (919) 250-4151

D. Stephen Scruggs
SEAL 10666
ENGINEER
PLANS ONLY

DOCUMENT NOT CONSIDERED FINAL
UNLESS ALL SIGNATURES COMPLETED

UTILITY CONSTRUCTION



BEGIN CONSTRUCTION
BEGIN TIP PROJECT R-5021
-YREV- POS STA 10+70.00

The estimated quantity of Ductile Iron Sewer Pipe Fittings on this plan sheet is 984 pounds. The actual quantity and type of fittings will vary based on field conditions.

The estimated quantity of Ductile Iron Water Pipe Fittings on this plan sheet is 1,780 pounds. The actual quantity and type of fittings will vary based on field conditions.

△ REMOVED NOTE BELOW PAY ITEM FOR ABANDON UTILITY PIPE PER ADDENDUM NO. 1

DATE: 10/19/2021
TIME: 9:55:17 AM
DGN: Z:\Projects\Utility Construction\2021_Revision\139-5021_UC_FS132.dgn