

Prepared In the Office of:

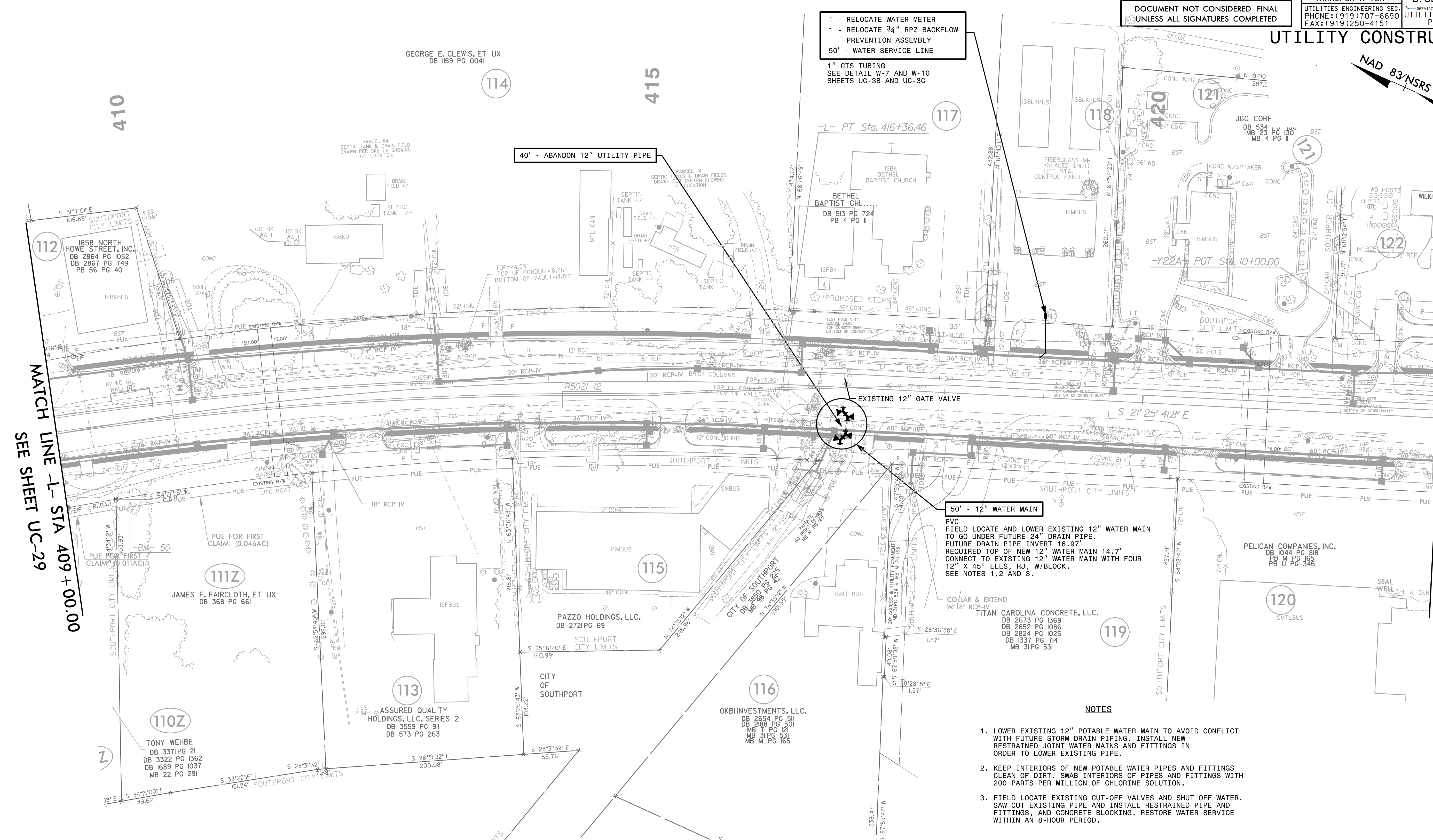
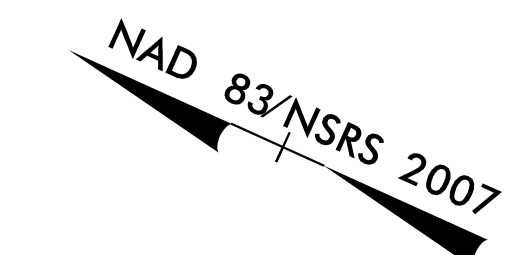


AECOM TECHNICAL SERVICES OF NORTH CAROLINA, INC.
701 CORPORATE CENTER DRIVE, SUITE 475, RALEIGH, NC 27607
919-854-6200 919-854-6259 (fax)
F - 0342

PROJECT REFERENCE NO.	R-5021	SHEET NO.	UC-30
DESIGNED BY:		DATE:	9/9/2021
DRAWN BY:			
CHECKED BY:			
APPROVED BY:			
REVISED:			
NORTH CAROLINA DEPARTMENT OF TRANSPORTATION		SEAL 10666	
UTILITIES ENGINEERING SEC. PHONE: (919) 707-6690 FAX: (919) 250-4151		D. Stephen Scroggs	
		UTILITY CONSTRUCTION PLANS ONLY	

DOCUMENT NOT CONSIDERED FINAL
UNLESS ALL SIGNATURES COMPLETED

UTILITY CONSTRUCTION



MATCH LINE -L- STA 409+00.00
SEE SHEET UC-29

MATCH LINE -L- STA 423+00.00
SEE SHEET UC-31

- NOTES**
1. LOWER EXISTING 12" POTABLE WATER MAIN TO AVOID CONFLICT WITH FUTURE STORM DRAIN PIPING. INSTALL NEW RESTRAINED JOINT WATER MAINS AND FITTINGS IN ORDER TO LOWER EXISTING PIPE.
 2. KEEP INTERIORS OF NEW POTABLE WATER PIPES AND FITTINGS CLEAN OF DIRT. SWAB INTERIORS OF PIPES AND FITTINGS WITH 200 PARTS PER MILLION OF CHLORINE SOLUTION.
 3. FIELD LOCATE EXISTING CUT-OFF VALVES AND SHUT OFF WATER. SAW CUT EXISTING PIPE AND INSTALL RESTRAINED PIPE AND FITTINGS. AND CONCRETE BLOCKING. RESTORE WATER SERVICE WITHIN AN 8-HOUR PERIOD.

The estimated quantity of Ductile Iron Water Pipe Fittings on this plan sheet is 860 pounds. The actual quantity and type of fittings will vary based on field conditions.

DATE: 8/16/2021
TIME: 9:04:54 PM
DGN: P:\04042603\000_Work\915_Limby_Construction\5021_UC_P5130.dgn