

NOTES

- SEE SHEET UC-52 FOR PROFILE OF NEW WATER MAIN
- FIELD LOCATE EXISTING WATER MAIN AND VERIFY SIZE AND MATERIAL. INSTALL NEW WATER MAIN UNDER EXISTING IN ORDER TO KEEP EXISTING WATER MAIN IN SERVICE UNTIL THE CONNECTIONS CAN BE MADE.
- WATER SERVICE TO THE METER VAULT SHOWN ON SHEET C-025 NEEDS TO REMAIN IN SERVICE TO THE EXTENT POSSIBLE. THE NEW 8" AND 12" SUPPLY MAINS NEED TO BE INSTALLED AND PLACED INTO SERVICE PRIOR TO TAKING THE 24" WATER MAIN OUT OF SERVICE.
- INSTALL THE TEMPORARY 24" LINE STOP PRIOR TO MAKING THE CONNECTION BETWEEN THE NEW AND EXISTING 24" WATER MAINS. THE LINE STOP IS TO BE CLOSED WHILE THE CONNECTION IS BEING MADE AND REMOVED AFTERWARDS.

Prepared In the Office of:

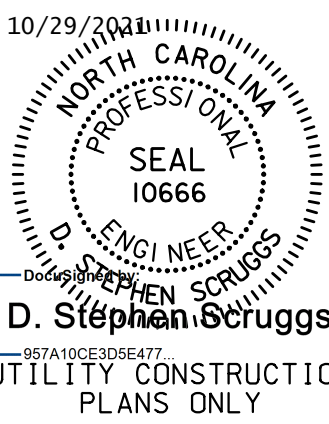


AECOM TECHNICAL SERVICES OF NORTH CAROLINA, INC.
701 CORPORATE CENTER DRIVE, SUITE 475, RALEIGH, NC 27607
919-854-6200 919-854-6259 (fax)
F-0342

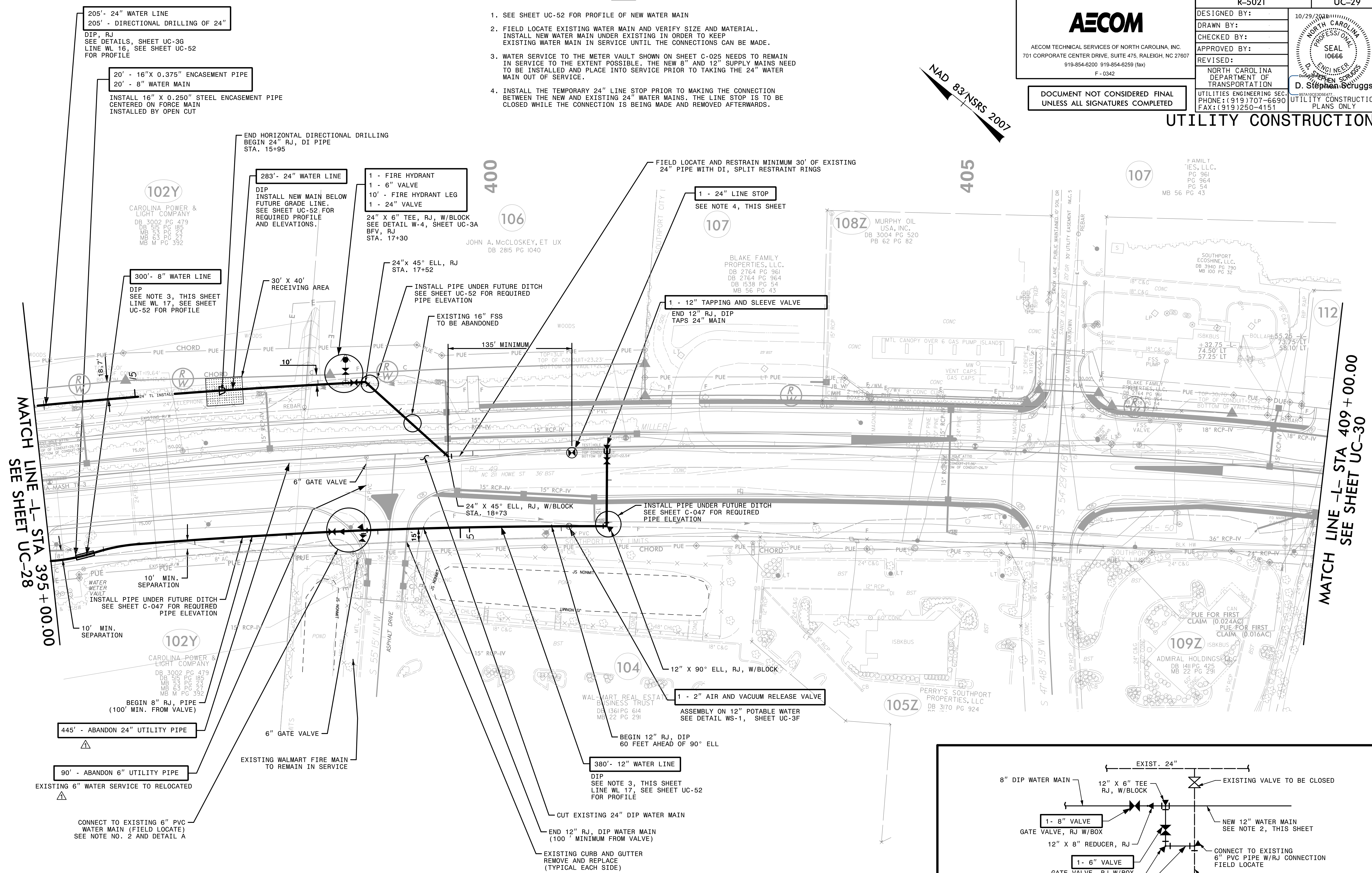
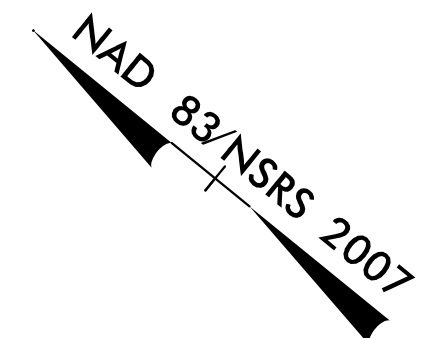
DOCUMENT NOT CONSIDERED FINAL UNLESS ALL SIGNATURES COMPLETED

PROJECT REFERENCE NO. R-5021 SHEET NO. UC-29

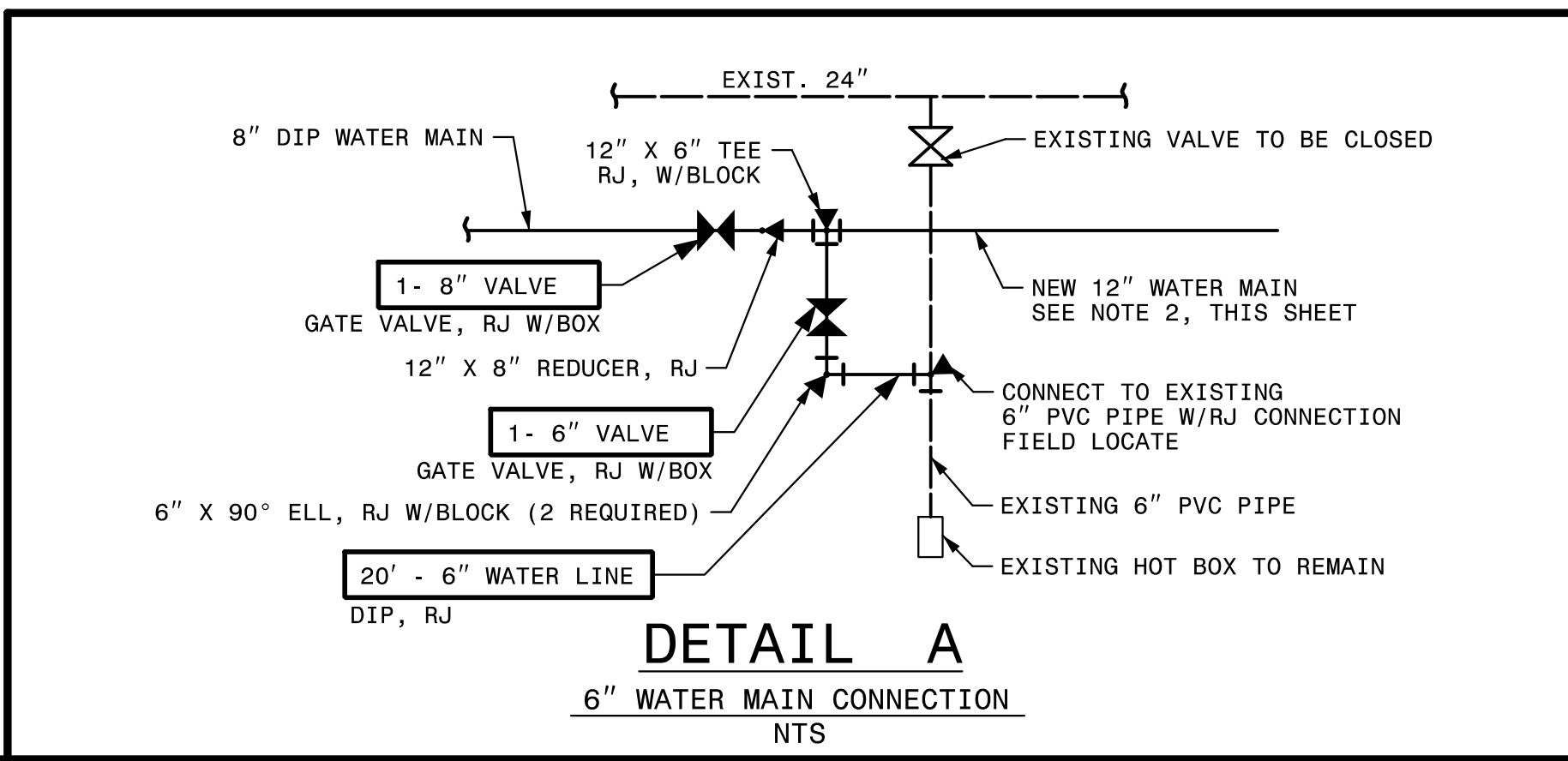
| | |
|---|------------|
| DESIGNED BY: | 10/29/2021 |
| DRAWN BY: | |
| CHECKED BY: | |
| APPROVED BY: | |
| REVISED: | |
| NORTH CAROLINA DEPARTMENT OF TRANSPORTATION | |
| UTILITIES ENGINEERING SECTION PHONE: (919) 707-6690 FAX: (919) 250-4151 | |



UTILITY CONSTRUCTION



The estimated quantity of Ductile Iron Water Pipe Fittings on this plan sheet is 4,165 pounds. The actual quantity and type of fittings will vary based on field conditions.



REMOVED NOTE BELOW PAY ITEM FOR ABANDON UTILITY PIPE PER ADDENDUM NO. 1

DATE: 10/18/2021
TIME: 4:31:52 PM
DGN: ZV\scroggs\USFAL3\Legacy\Projects\60428203\900_MerA\916_UTILITY Construction\2021_REV\1010\SVR-5021_UC_F51123.dgn