
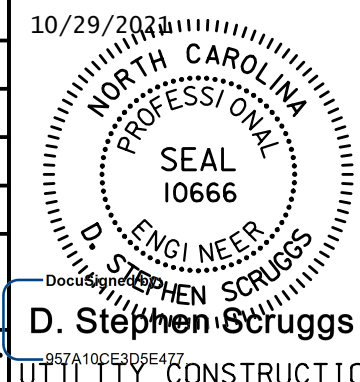


Prepared In the Office of:



AECOM TECHNICAL SERVICES OF NORTH CAROLINA, INC.  
701 CORPORATE CENTER DRIVE, SUITE 475, RALEIGH, NC 27607  
919-854-6200 919-854-6259 (fax)  
F-0342

PROJECT REFERENCE NO.	R-5021	SHEET NO.	UC-28
DESIGNED BY:		DATE:	10/29/2021
DRAWN BY:		SCALE:	10666
CHECKED BY:		APPROVED BY:	
APPROVED BY:		REVISOR:	
REVISOR:		REVISION:	
NORTH CAROLINA DEPARTMENT OF TRANSPORTATION		UTILITIES ENGINEERING SECTION	
PHONE: (919) 707-6690		FAX: (919) 250-4151	

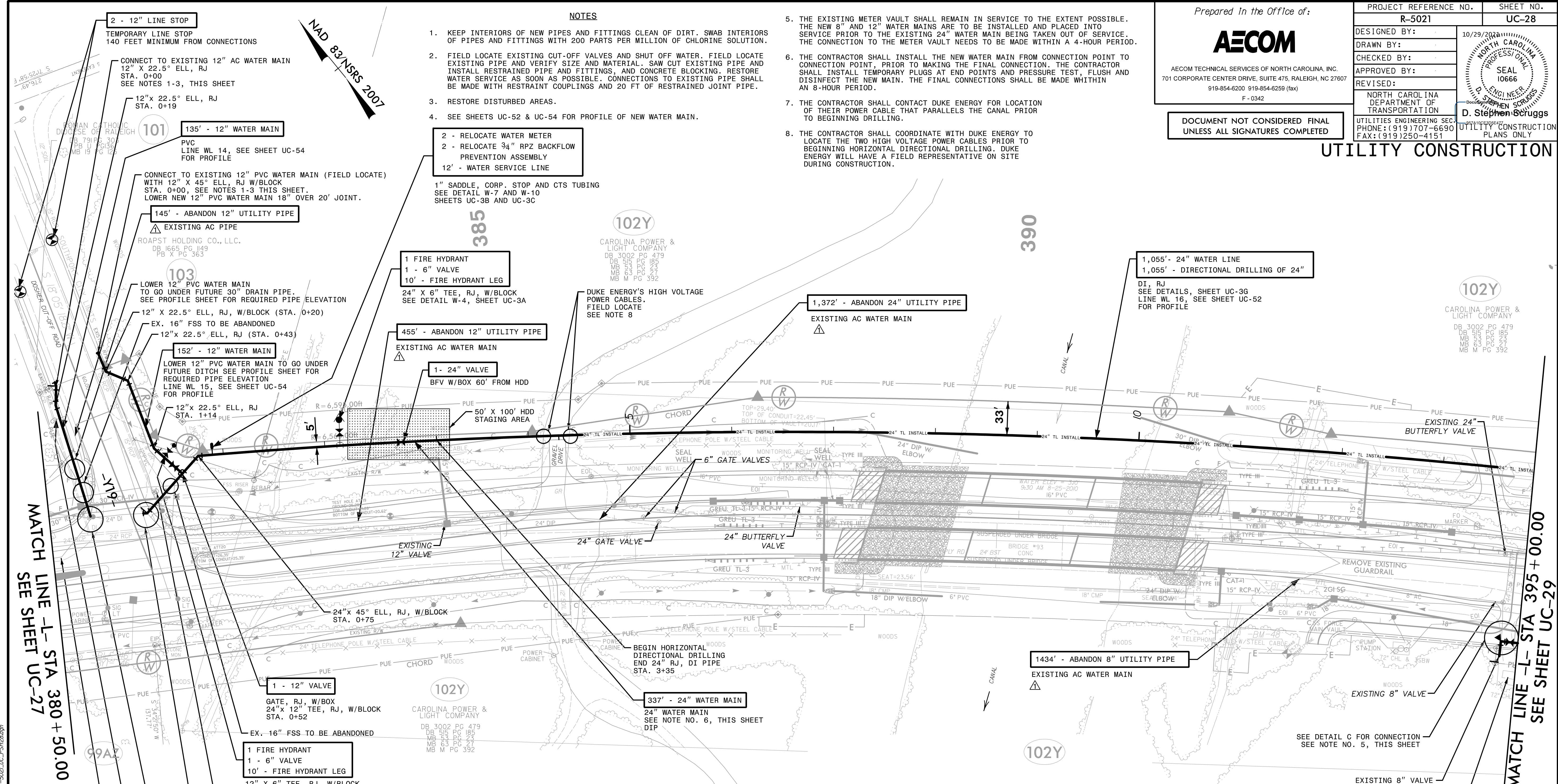


DOCUMENT NOT CONSIDERED FINAL  
UNLESS ALL SIGNATURES COMPLETED

UTILITY CONSTRUCTION

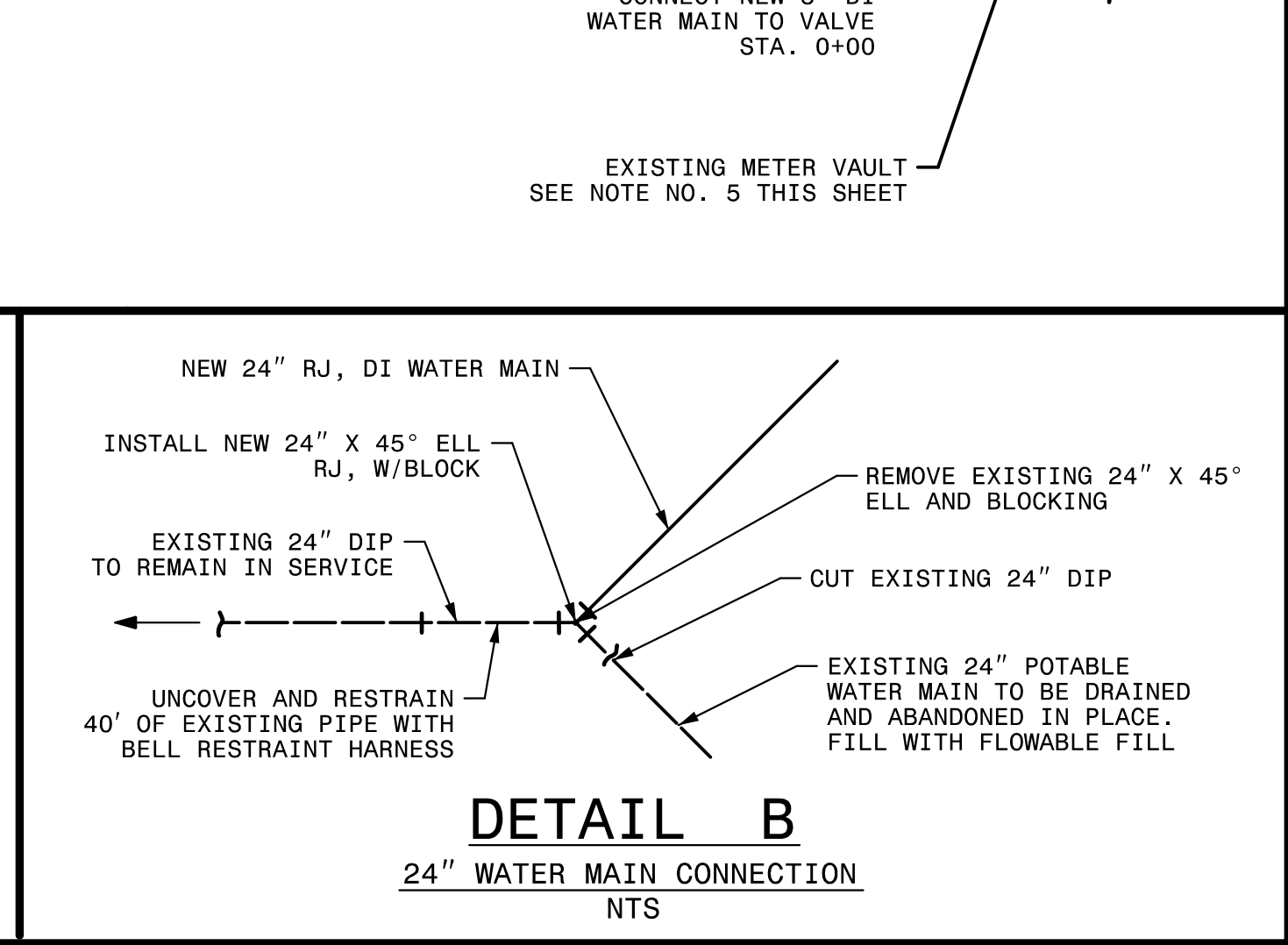
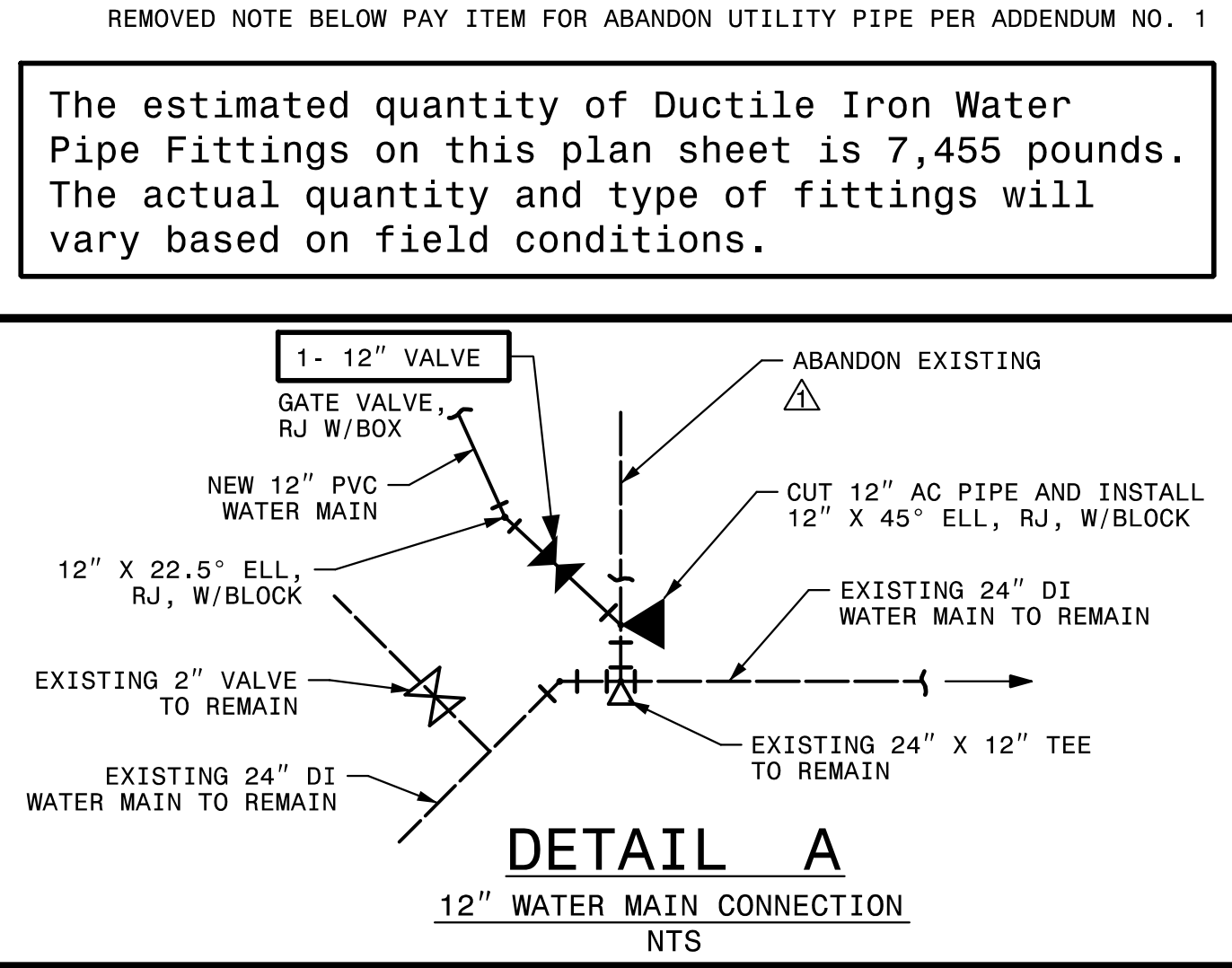
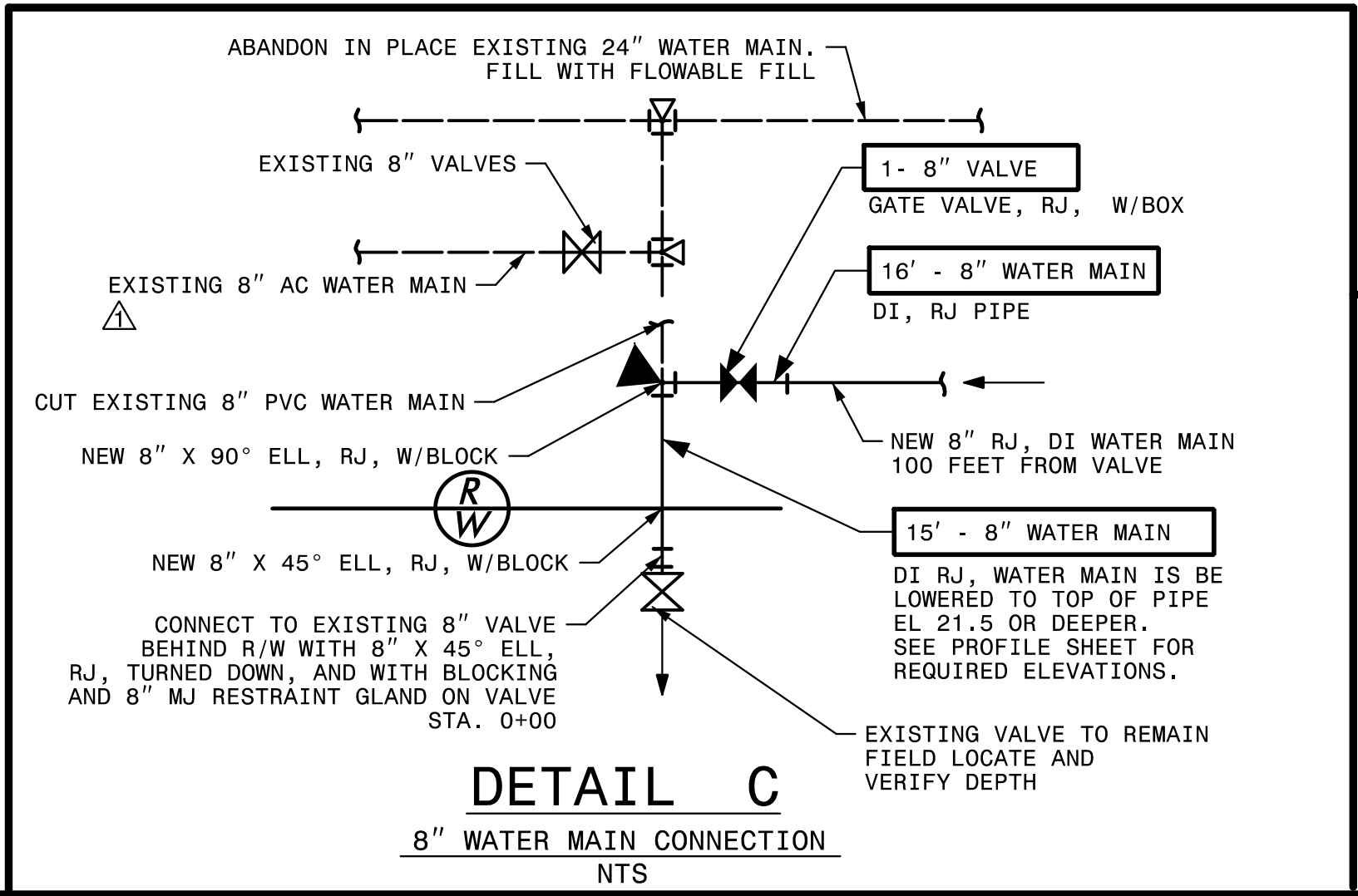
NOTES

- KEEP INTERIORS OF NEW PIPES AND FITTINGS CLEAN OF DIRT. SWAB INTERIORS OF PIPES AND FITTINGS WITH 200 PARTS PER MILLION OF CHLORINE SOLUTION.
- FIELD LOCATE EXISTING CUT-OFF VALVES AND SHUT OFF WATER. FIELD LOCATE EXISTING PIPE AND VERIFY SIZE AND MATERIAL. SAW CUT EXISTING PIPE AND INSTALL RESTRAINED PIPE AND FITTINGS, AND CONCRETE BLOCKING. RESTORE WATER SERVICE AS SOON AS POSSIBLE. CONNECTIONS TO EXISTING PIPE SHALL BE MADE WITH RESTRAINT COUPLINGS AND 20 FT OF RESTRAINED JOINT PIPE.
- RESTORE DISTURBED AREAS.
- SEE SHEETS UC-52 & UC-54 FOR PROFILE OF NEW WATER MAIN.
- THE EXISTING METER VAULT SHALL REMAIN IN SERVICE TO THE EXTENT POSSIBLE. THE NEW 8" AND 12" WATER MAINS ARE TO BE INSTALLED AND PLACED INTO SERVICE PRIOR TO THE EXISTING 24" WATER MAIN BEING TAKEN OUT OF SERVICE. THE CONNECTION TO THE METER VAULT NEEDS TO BE MADE WITHIN A 4-HOUR PERIOD.
- THE CONTRACTOR SHALL INSTALL THE NEW WATER MAIN FROM CONNECTION POINT TO CONNECTION POINT, PRIOR TO MAKING THE FINAL CONNECTION. THE CONTRACTOR SHALL INSTALL TEMPORARY PLUGS AT END POINTS AND PRESSURE TEST, FLUSH AND DISINFECT THE NEW MAIN. THE FINAL CONNECTIONS SHALL BE MADE WITHIN AN 8-HOUR PERIOD.
- THE CONTRACTOR SHALL CONTACT DUKE ENERGY FOR LOCATION OF THEIR POWER CABLE THAT PARALLELS THE CANAL PRIOR TO BEGINNING DRILLING.
- THE CONTRACTOR SHALL COORDINATE WITH DUKE ENERGY TO LOCATE THE TWO HIGH VOLTAGE POWER CABLES PRIOR TO BEGINNING HORIZONTAL DIRECTIONAL DRILLING. DUKE ENERGY WILL HAVE A FIELD REPRESENTATIVE ON SITE DURING CONSTRUCTION.



MATCH LINE -L- STA 380 + 50.00  
SEE SHEET UC-27

MATCH LINE -L- STA 395 + 00.00  
SEE SHEET UC-29



REMOVED NOTE BELOW PAY ITEM FOR ABANDON UTILITY PIPE PER ADDENDUM NO. 1

The estimated quantity of Ductile Iron Water Pipe Fittings on this plan sheet is 7,455 pounds. The actual quantity and type of fittings will vary based on field conditions.

DATE: 10/08/2021  
TIME: 4:25:52 PM  
DGN: Z:\Voleigh\USFALTY\Utility\Projects\60428203\900\_MerA\915\_UTILITY CONSTRUCTION\2021\_REV\REVISED\UC-28\_UC-F51128.dgn