
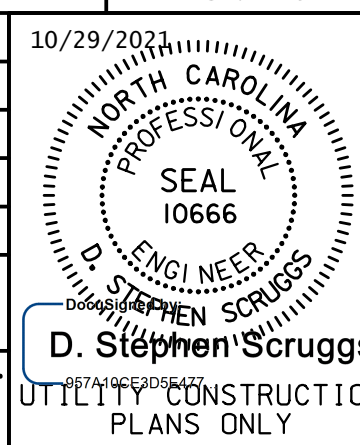


Prepared In the Office of:



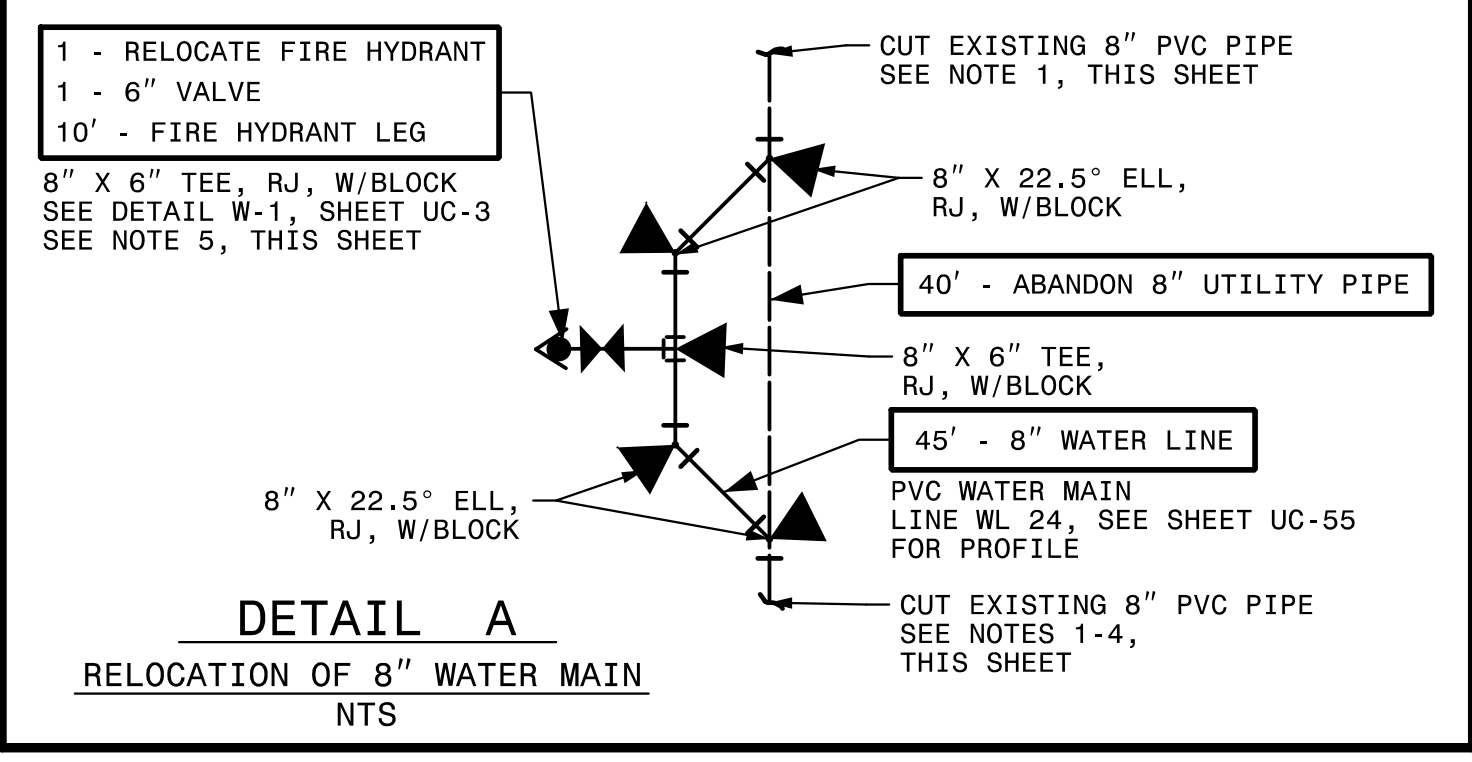
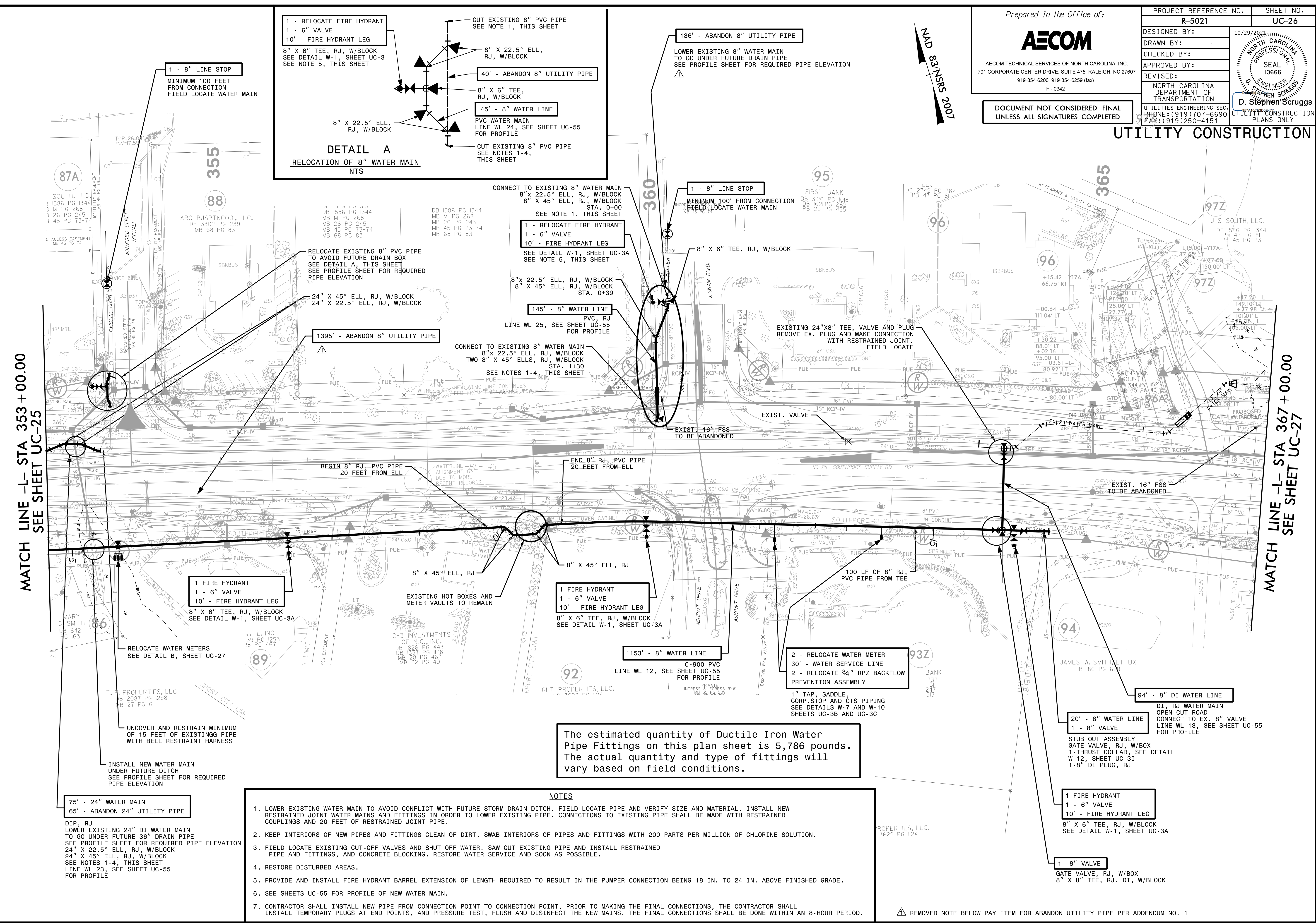
AECOM TECHNICAL SERVICES OF NORTH CAROLINA, INC.  
701 CORPORATE CENTER DRIVE, SUITE 475, RALEIGH, NC 27607  
919-854-6200 919-854-6259 (fax)  
F-0342

PROJECT REFERENCE NO.	SHEET NO.
R-5021	UC-26
DESIGNED BY:	10/29/2021
DRAWN BY:	
CHECKED BY:	
APPROVED BY:	
REVISED:	
NORTH CAROLINA DEPARTMENT OF TRANSPORTATION	
UTILITIES ENGINEERING SECTION PHONE: (919) 707-6690 FAX: (919) 250-4151	



DOCUMENT NOT CONSIDERED FINAL  
UNLESS ALL SIGNATURES COMPLETED

### UTILITY CONSTRUCTION



CONNECT TO EXISTING 8" WATER MAIN  
8" X 22.5° ELL, RJ, W/BLOCK  
8" X 45° ELL, RJ, W/BLOCK  
STA. 0+00  
SEE NOTE 1, THIS SHEET

1 - RELOCATE FIRE HYDRANT  
1 - 6" VALVE  
10' - FIRE HYDRANT LEG  
SEE DETAIL W-1, SHEET UC-3A  
SEE NOTE 5, THIS SHEET

8" X 22.5° ELL, RJ, W/BLOCK  
8" X 45° ELL, RJ, W/BLOCK  
STA. 0+39

145' - 8" WATER LINE  
PVC, RJ  
LINE WL 25, SEE SHEET UC-55  
FOR PROFILE

CONNECT TO EXISTING 8" WATER MAIN  
8" X 22.5° ELL, RJ, W/BLOCK  
TWO 8" X 45° ELLS, RJ, W/BLOCK  
STA. 1+30  
SEE NOTES 1-4, THIS SHEET

The estimated quantity of Ductile Iron Water Pipe Fittings on this plan sheet is 5,786 pounds. The actual quantity and type of fittings will vary based on field conditions.

**NOTES**

1. LOWER EXISTING WATER MAIN TO AVOID CONFLICT WITH FUTURE STORM DRAIN DITCH. FIELD LOCATE PIPE AND VERIFY SIZE AND MATERIAL. INSTALL NEW RESTRAINED JOINT WATER MAINS AND FITTINGS IN ORDER TO LOWER EXISTING PIPE. CONNECTIONS TO EXISTING PIPE SHALL BE MADE WITH RESTRAINED COUPLINGS AND 20 FEET OF RESTRAINED JOINT PIPE.
2. KEEP INTERIORS OF NEW PIPES AND FITTINGS CLEAN OF DIRT. SWAB INTERIORS OF PIPES AND FITTINGS WITH 200 PARTS PER MILLION OF CHLORINE SOLUTION.
3. FIELD LOCATE EXISTING CUT-OFF VALVES AND SHUT OFF WATER. SAW CUT EXISTING PIPE AND INSTALL RESTRAINED PIPE AND FITTINGS, AND CONCRETE BLOCKING. RESTORE WATER SERVICE AND SOON AS POSSIBLE.
4. RESTORE DISTURBED AREAS.
5. PROVIDE AND INSTALL FIRE HYDRANT BARREL EXTENSION OF LENGTH REQUIRED TO RESULT IN THE PUMPER CONNECTION BEING 18 IN. TO 24 IN. ABOVE FINISHED GRADE.
6. SEE SHEETS UC-55 FOR PROFILE OF NEW WATER MAIN.
7. CONTRACTOR SHALL INSTALL NEW PIPE FROM CONNECTION POINT TO CONNECTION POINT. PRIOR TO MAKING THE FINAL CONNECTIONS, THE CONTRACTOR SHALL INSTALL TEMPORARY PLUGS AT END POINTS, AND PRESSURE TEST, FLUSH AND DISINFECT THE NEW MAINS. THE FINAL CONNECTIONS SHALL BE DONE WITHIN AN 8-HOUR PERIOD.

△ REMOVED NOTE BELOW PAY ITEM FOR ABANDON UTILITY PIPE PER ADDENDUM NO. 1

MATCH LINE -L- STA 353 + 00.00  
SEE SHEET UC-25

MATCH LINE -L- STA 367 + 00.00  
SEE SHEET UC-27

DATE: 10/18/2021  
TIME: 4:09:15 PM  
DGN: Z:\Projects\UTILITY\Projects\60428203\900\_MerA\915\_Utility Construction\2021\_REV\VISIONS\R-5021\_UC\_26.dgn