

NOTES

1. SEE SHEET UC-55 FOR PROFILE OF NEW WATER MAIN.

Prepared In the Office of:

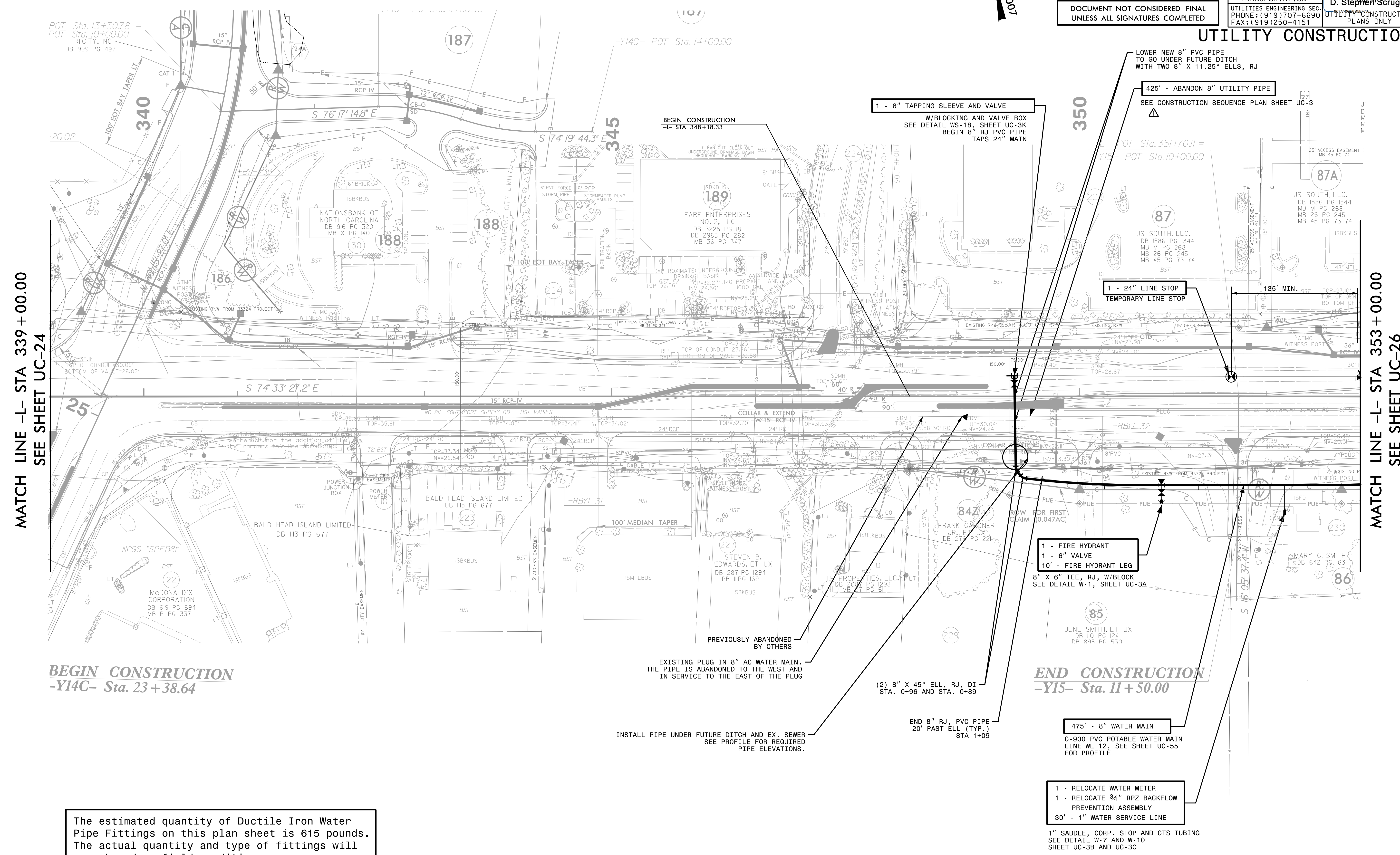


AECOM TECHNICAL SERVICES OF NORTH CAROLINA, INC.  
701 CORPORATE CENTER DRIVE, SUITE 475, RALEIGH, NC 27607  
919-854-6200 919-854-6259 (fax)  
F-0342

PROJECT REFERENCE NO.	R-5021	SHEET NO.	UC-25
DESIGNED BY:		DATE:	10/29/2021
DRAWN BY:			
CHECKED BY:			
APPROVED BY:			
REVISED:			
NORTH CAROLINA DEPARTMENT OF TRANSPORTATION		SEAL 10666	
UTILITIES ENGINEERING SEC. PHONE: (919) 707-6690 FAX: (919) 250-4151		D. Stephen Scruggs	

DOCUMENT NOT CONSIDERED FINAL  
UNLESS ALL SIGNATURES COMPLETED

UTILITY CONSTRUCTION



MATCH LINE -L- STA 339 + 00.00  
SEE SHEET UC-24

MATCH LINE -L- STA 353 + 00.00  
SEE SHEET UC-26

**BEGIN CONSTRUCTION**  
-Y14C- Sta. 23 + 38.64

**END CONSTRUCTION**  
-Y15- Sta. 11 + 50.00

The estimated quantity of Ductile Iron Water Pipe Fittings on this plan sheet is 615 pounds. The actual quantity and type of fittings will vary based on field conditions.

REMOVED NOTE BELOW PAY ITEM FOR ABANDON UTILITY PIPE PER ADDENDUM NO. 1

DATE: 10/08/2021  
TIME: 4:00:59 PM  
DGN: Z:\Noleigh\USFALTY\Legacy\Projects\60428203\900\_MerA\915\_Utility\_Construction\2021\_REV\15015015R-5021\_UC\_25.dgn