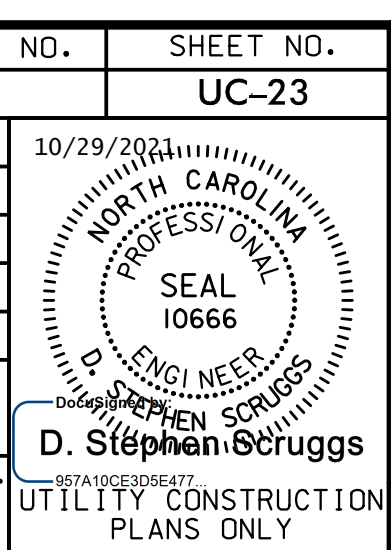




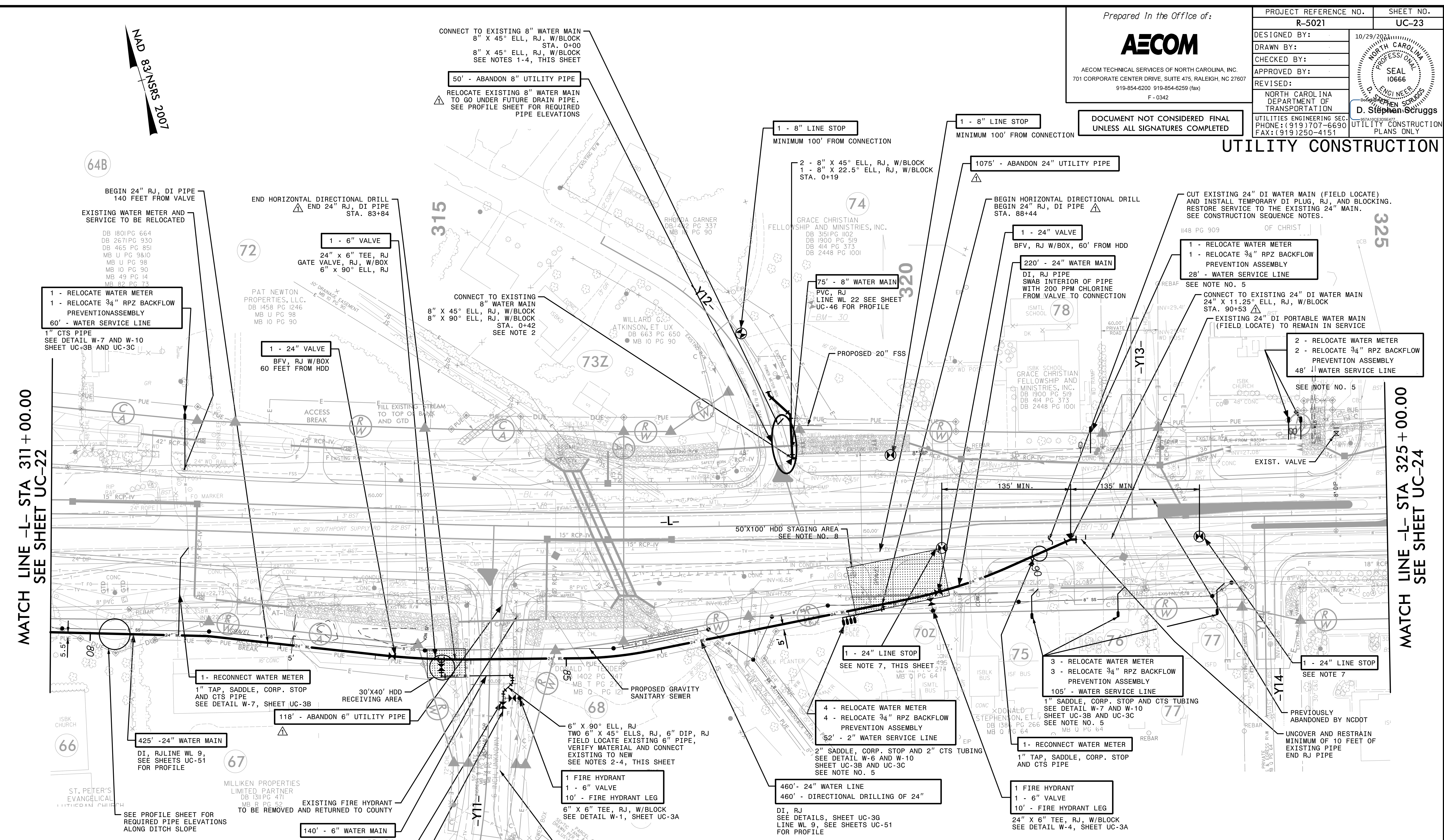
AECOM TECHNICAL SERVICES OF NORTH CAROLINA, INC.
701 CORPORATE CENTER DRIVE, SUITE 475, RALEIGH, NC 27607
919-854-6200 919-854-6259 (fax)
F-0342

PROJECT REFERENCE NO.	SHEET NO.
R-5021	UC-23
DESIGNED BY:	10/29/2021
DRAWN BY:	
CHECKED BY:	
APPROVED BY:	
REVISED:	
NORTH CAROLINA DEPARTMENT OF TRANSPORTATION	
UTILITIES ENGINEERING SECTION	
PHONE: (919) 707-6690	
FAX: (919) 250-4151	



DOCUMENT NOT CONSIDERED FINAL
UNLESS ALL SIGNATURES COMPLETED

UTILITY CONSTRUCTION



MATCH LINE -L- STA 311 + 00.00
SEE SHEET UC-22

MATCH LINE -L- STA 325 + 00.00
SEE SHEET UC-24

- NOTES**
- LOWER EXISTING WATER MAIN TO AVOID CONFLICT WITH FUTURE STORM DRAIN DITCH. FIELD LOCATE PIPE AND VERIFY SIZE AND MATERIALS. INSTALL RESTRAINED JOINT WATER MAINS AND FITTINGS IN ORDER TO LOWER EXISTING PIPE. CONNECTIONS TO EXISTING PIPE SHALL BE MADE WITH RESTRAINT COUPLINGS AND 20 FEET OF RESTRAINT JOINT PIPE.
 - KEEP INTERIORS OF NEW PIPES AND FITTINGS CLEAN OF DIRT. SWAB INTERIORS OF PIPES AND FITTINGS WITH 200 PARTS PER MILLION OF CHLORINE SOLUTION. RESTORE WATER SERVICE AND SOON AS POSSIBLE.
 - FIELD LOCATE EXISTING CUT-OFF VALVES AND SHUT OFF WATER. SAW CUT EXISTING PIPE AND INSTALL RESTRAINED PIPE AND FITTINGS, AND CONCRETE BLOCKING.
 - RESTORE DISTURBED AREAS.
 - RELOCATE EXISTING WATER METER, BOX, RPZ BACKFLOW PREVENTION ASSEMBLY AND SERVICE PIPE TO RIGHT-OF-WAY. USE 1" CTS PIPE PER DETAIL W-7 AND W-10, SHEETS UC-3B AND UC-3C.
 - SEE SHEET UC-51 FOR PROFILE OF NEW WATER MAIN.
 - INSTALL LINE STOP TO ALLOW FOR CONNECTION TO BE MADE AND TO ALLOW FOR EXISTING 24" WATER MAIN TO REMAIN IN SERVICE UNTIL ALL SERVICES HAVE BEEN RELOCATED. ALSO SEE NOTE 6, SHEET UC-17.
 - PERFORM THE HDD ON THE WEEKEND WHEN THE EXISTING BUSINESSES ARE CLOSED. REPAIR GRAVEL DRIVE AND MAKE ACCESSIBLE BY MONDAY MORNING, START OF BUSINESS.

The estimated quantity of Ductile Iron Water Pipe Fittings on this plan sheet is 5,480 pounds. The actual quantity and type of fittings will vary based on field conditions.

REMOVED NOTE BELOW PAY ITEM FOR ABANDON UTILITY PIPE PER ADDENDUM NO. 1 REVISED WATER MAIN STATIONING AND HORIZONTAL DIRECTIONAL DRILL BEGIN AND END STATIONS AS A RESULT OF PIPE REVISIONS SHOWN ON SHEET UC-22, PER ADDENDUM NO. 1.

DATE: 10/26/2021
TIME: 10:24:00 AM
DRAWN BY: ZVW/rlg
PROJECT: USFAL3 Legacy Project 60428203300_MerA915_Utility Construction 2021_REV15015V1R-2021_UC_F51423.dgn