

Prepared In the Office of:



AECOM TECHNICAL SERVICES OF NORTH CAROLINA, INC.  
701 CORPORATE CENTER DRIVE, SUITE 475, RALEIGH, NC 27607  
919-854-6200 919-854-6259 (fax)  
F-0342

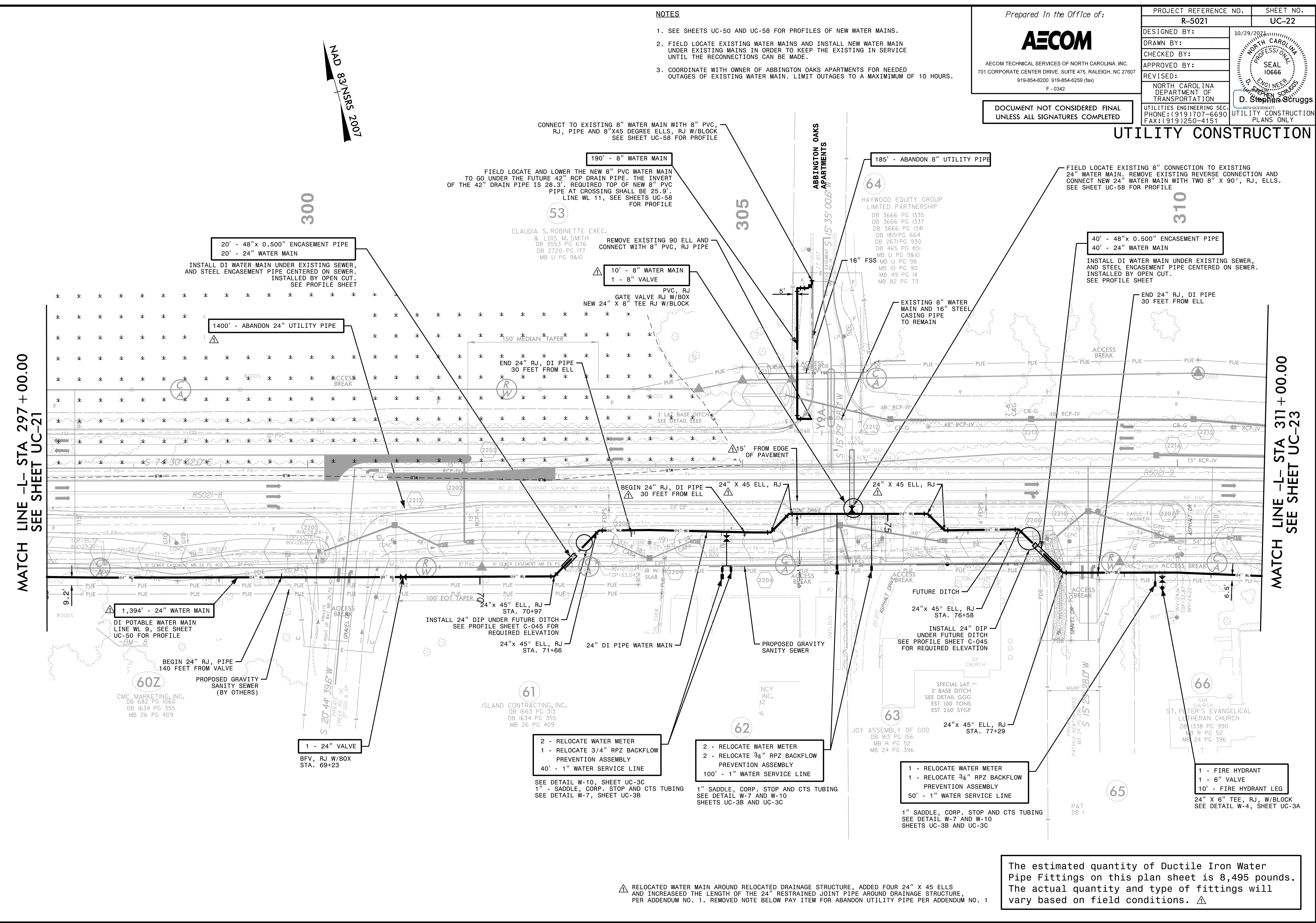
PROJECT REFERENCE NO.	R-5021	SHEET NO.	UC-22
DESIGNED BY:		DATE:	10/29/2021
DRAWN BY:			
CHECKED BY:			
APPROVED BY:			
REVISED:			
NORTH CAROLINA DEPARTMENT OF TRANSPORTATION		SEAL 10666	
UTILITIES ENGINEERING SEC. PHONE: (919) 707-6690 FAX: (919) 250-4151		D. Stephen Scroggs REGISTERED PROFESSIONAL ENGINEER NO. 10666	
UTILITY CONSTRUCTION PLANS ONLY			

DOCUMENT NOT CONSIDERED FINAL  
UNLESS ALL SIGNATURES COMPLETED

### UTILITY CONSTRUCTION

#### NOTES

- SEE SHEETS UC-50 AND UC-58 FOR PROFILES OF NEW WATER MAINS.
- FIELD LOCATE EXISTING WATER MAINS AND INSTALL NEW WATER MAIN UNDER EXISTING MAINS IN ORDER TO KEEP THE EXISTING IN SERVICE UNTIL THE RECONNECTIONS CAN BE MADE.
- COORDINATE WITH OWNER OF ABBINGTON OAKS APARTMENTS FOR NEEDED OUTAGES OF EXISTING WATER MAIN. LIMIT OUTAGES TO A MAXIMUM OF 10 HOURS.



MATCH LINE -L- STA 297 + 00.00  
SEE SHEET UC-21

MATCH LINE -L- STA 311 + 00.00  
SEE SHEET UC-23

CONNECT TO EXISTING 8" WATER MAIN WITH 8" PVC, RJ, PIPE AND 8" X 45 DEGREE ELLS, RJ W/BLOCK SEE SHEET UC-58 FOR PROFILE

190' - 8" WATER MAIN  
FIELD LOCATE AND LOWER THE NEW 8" PVC WATER MAIN TO GO UNDER THE FUTURE 42" RCP DRAIN PIPE. THE INVERT OF THE 42" DRAIN PIPE IS 28.3'. REQUIRED TOP OF NEW 8" PVC PIPE AT CROSSING SHALL BE 25.9'. LINE WL 11, SEE SHEETS UC-58 FOR PROFILE

20' - 48" x 0.500" ENCASEMENT PIPE  
20' - 24" WATER MAIN  
INSTALL DI WATER MAIN UNDER EXISTING SEWER, AND STEEL ENCASEMENT PIPE CENTERED ON SEWER. INSTALLED BY OPEN CUT. SEE PROFILE SHEET

REMOVE EXISTING 90 ELL AND CONNECT WITH 8" PVC, RJ PIPE

10' - 8" WATER MAIN  
1 - 8" VALVE  
PVC, RJ GATE VALVE RJ W/BOX NEW 24" X 8" TEE RJ W/BLOCK

185' - ABANDON 8" UTILITY PIPE

FIELD LOCATE EXISTING 8" CONNECTION TO EXISTING 24" WATER MAIN. REMOVE EXISTING REVERSE CONNECTION AND CONNECT NEW 24" WATER MAIN WITH TWO 8" X 90", RJ, ELLS. SEE SHEET UC-58 FOR PROFILE

40' - 48" x 0.500" ENCASEMENT PIPE  
40' - 24" WATER MAIN  
INSTALL DI WATER MAIN UNDER EXISTING SEWER, AND STEEL ENCASEMENT PIPE CENTERED ON SEWER. INSTALLED BY OPEN CUT. SEE PROFILE SHEET

1400' - ABANDON 24" UTILITY PIPE

END 24" RJ, DI PIPE 30 FEET FROM ELL

BEGIN 24" RJ, DI PIPE 30 FEET FROM ELL

24" X 45 ELL, RJ

1,394' - 24" WATER MAIN  
DI POTABLE WATER MAIN LINE WL 9, SEE SHEET UC-50 FOR PROFILE

INSTALL 24" DIP UNDER FUTURE DITCH SEE PROFILE SHEET C-045 FOR REQUIRED ELEVATION

24" x 45" ELL, RJ STA. 71+66

24" DI PIPE WATER MAIN

PROPOSED GRAVITY SANITY SEWER

INSTALL 24" DIP UNDER FUTURE DITCH SEE PROFILE SHEET C-045 FOR REQUIRED ELEVATION

24" x 45" ELL, RJ STA. 77+29

60Z  
CMC MARKETING, INC.  
DB 682 PG 1060  
DB 1634 PG 355  
MB 26 PG 409

61  
ISLAND CONTRACTING, INC.  
DB 1663 PG 313  
DB 1634 PG 355  
MB 26 PG 409

2 - RELOCATE WATER METER  
1 - RELOCATE 3/4" RPZ BACKFLOW PREVENTION ASSEMBLY  
40' - 1" WATER SERVICE LINE  
SEE DETAIL W-10, SHEET UC-3C  
1" - SADDLE, CORP. STOP AND CTS TUBING SEE DETAIL W-7, SHEET UC-3B

1 - RELOCATE WATER METER  
1 - RELOCATE 3/4" RPZ BACKFLOW PREVENTION ASSEMBLY  
50' - 1" WATER SERVICE LINE  
1" SADDLE, CORP. STOP AND CTS TUBING SEE DETAIL W-7 AND W-10 SHEETS UC-3B AND UC-3C

1 - FIRE HYDRANT  
1 - 6" VALVE  
10' - FIRE HYDRANT LEG  
24" X 6" TEE, RJ, W/BLOCK SEE DETAIL W-4, SHEET UC-3A

RELOCATED WATER MAIN AROUND RELOCATED DRAINAGE STRUCTURE, ADDED FOUR 24" X 45 ELLS AND INCREASED THE LENGTH OF THE 24" RESTRAINED JOINT PIPE AROUND DRAINAGE STRUCTURE, PER ADDENDUM NO. 1. REMOVED NOTE BELOW PAY ITEM FOR ABANDON UTILITY PIPE PER ADDENDUM NO. 1

The estimated quantity of Ductile Iron Water Pipe Fittings on this plan sheet is 8,495 pounds. The actual quantity and type of fittings will vary based on field conditions.

DATE: 10/25/2021  
TIME: 10:59:38 AM  
DGN: Z:\Projects\Utility Construction\2021\_REV\10\15\UC-22\UC-22.dgn