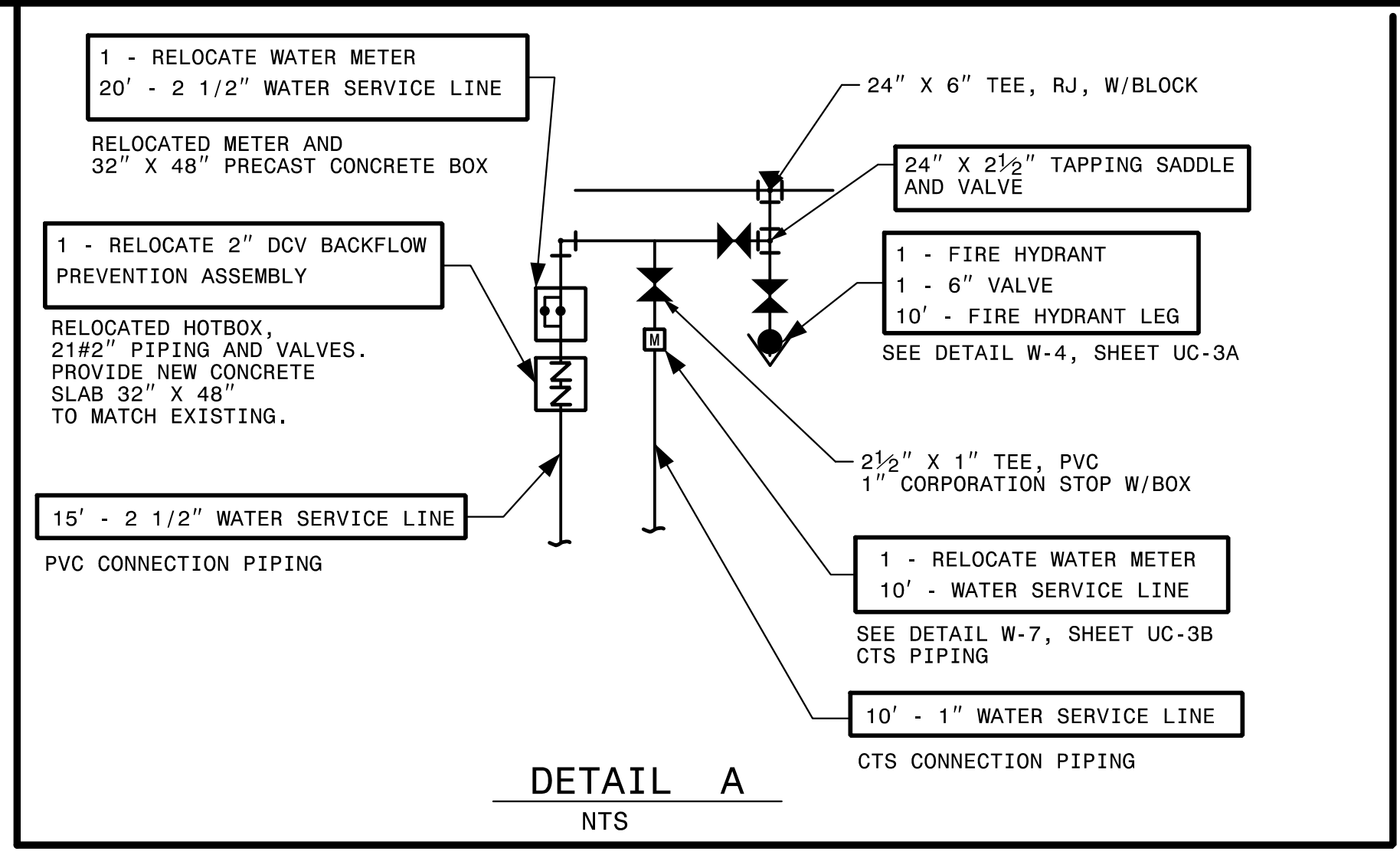


285

290

295



- NOTES**
- SEE SHEET UC-50 FOR PROFILE OF NEW WATER MAIN.
  - FIELD LOCATE EXISTING WATER MAINS AND INSTALL NEW 24" WATER MAIN UNDER EXISTING WATER MAINS IN ORDER TO KEEP THE EXISTING IN SERVICE UNTIL THE RECONNECTIONS CAN BE MADE.

Prepared In the Office of:

**AECOM**

AECOM TECHNICAL SERVICES OF NORTH CAROLINA, INC.  
701 CORPORATE CENTER DRIVE, SUITE 475, RALEIGH, NC 27607  
919-854-6200 919-854-6259 (fax)  
F - 0342

PROJECT REFERENCE NO. **R-5021** SHEET NO. **UC-21**

DESIGNED BY: 10/29/2007  
DRAWN BY:  
CHECKED BY:  
APPROVED BY:  
REVISED:

SEAL 10666  
D. Stephen Scroggs  
REGISTERED PROFESSIONAL ENGINEER  
NORTH CAROLINA DEPARTMENT OF TRANSPORTATION

UTILITY ENGINEERING SEC. PHONE: (919) 707-6690  
FAX: (919) 250-4151

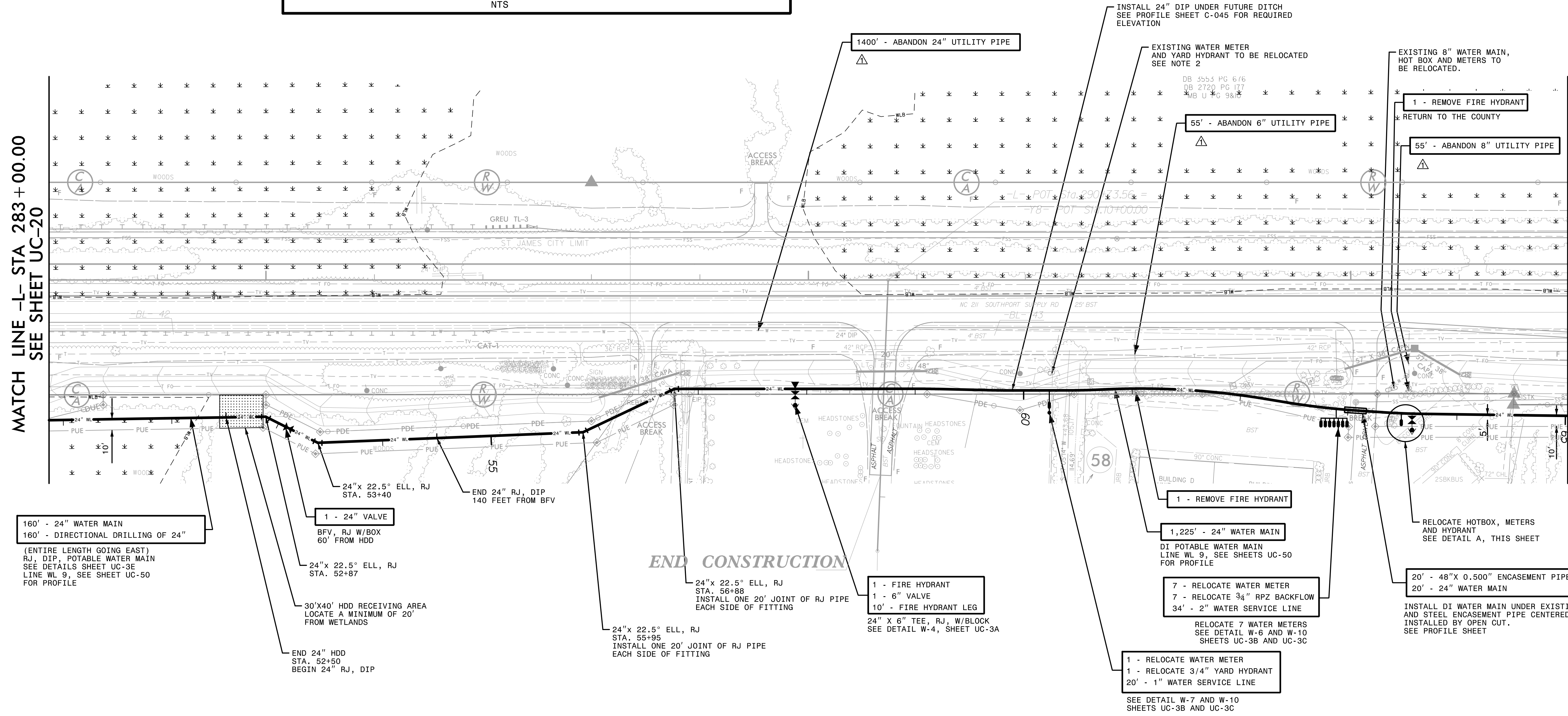
UTILITY CONSTRUCTION PLANS ONLY

DOCUMENT NOT CONSIDERED FINAL UNLESS ALL SIGNATURES COMPLETED

**UTILITY CONSTRUCTION**

MATCH LINE -L- STA 283 + 00.00  
SEE SHEET UC-20

MATCH LINE -L- STA 297 + 00.00  
SEE SHEET UC-22



160' - 24" WATER MAIN  
160' - DIRECTIONAL DRILLING OF 24"  
(ENTIRE LENGTH GOING EAST)  
RJ, DIP, POTABLE WATER MAIN  
SEE DETAILS SHEET UC-3E  
LINE WL 9, SEE SHEET UC-50  
FOR PROFILE

1 - 24" VALVE  
BFV, RJ W/BOX  
60' FROM HDD

24"x 22.5° ELL, RJ  
STA. 52+87

30'x40' HDD RECEIVING AREA  
LOCATE A MINIMUM OF 20'  
FROM WETLANDS

END 24" HDD  
STA. 52+50  
BEGIN 24" RJ, DIP

END 24" RJ, DIP  
140 FEET FROM BFV

24"x 22.5° ELL, RJ  
STA. 56+88  
INSTALL ONE 20' JOINT OF RJ PIPE  
EACH SIDE OF FITTING

24"x 22.5° ELL, RJ  
STA. 55+95  
INSTALL ONE 20' JOINT OF RJ PIPE  
EACH SIDE OF FITTING

1 - FIRE HYDRANT  
1 - 6" VALVE  
10' - FIRE HYDRANT LEG

24" X 6" TEE, RJ, W/BLOCK  
SEE DETAIL W-4, SHEET UC-3A

1 - REMOVE FIRE HYDRANT

1,225' - 24" WATER MAIN

DI POTABLE WATER MAIN  
LINE WL 9, SEE SHEETS UC-50  
FOR PROFILE

7 - RELOCATE WATER METER  
7 - RELOCATE 3/4" RPZ BACKFLOW  
34' - 2" WATER SERVICE LINE

RELOCATE 7 WATER METERS  
SEE DETAIL W-6 AND W-10  
SHEETS UC-3B AND UC-3C

1 - RELOCATE WATER METER  
1 - RELOCATE 3/4" YARD HYDRANT  
20' - 1" WATER SERVICE LINE

SEE DETAIL W-7 AND W-10  
SHEETS UC-3B AND UC-3C

20' - 48" X 0.500" ENCASEMENT PIPE  
20' - 24" WATER MAIN

INSTALL DI WATER MAIN UNDER EXISTING SEWER,  
AND STEEL ENCASEMENT PIPE CENTERED ON SEWER.  
INSTALLED BY OPEN CUT.  
SEE PROFILE SHEET

**END CONSTRUCTION**

△ REMOVED NOTE BELOW PAY ITEM FOR ABANDON UTILITY PIPE PER ADDENDUM NO. 1

The estimated quantity of Ductile Iron Water Pipe Fittings on this plan sheet is 6,016 pounds. The actual quantity and type of fittings will vary based on field conditions.