

NOTES

1. SEE SHEET UC-49 FOR PROFILE OF NEW WATER MAIN.

Prepared In the Office of:

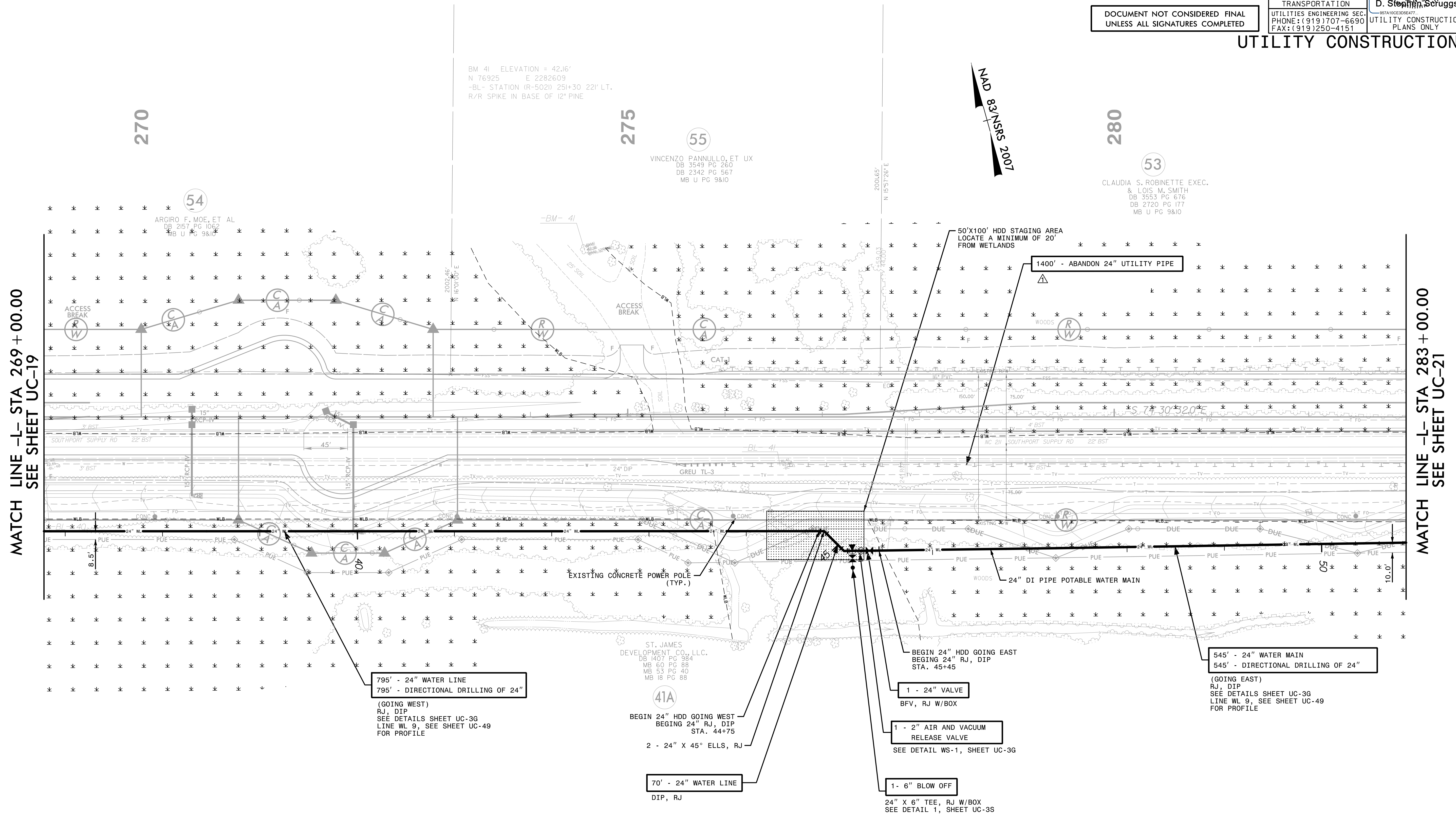


AECOM TECHNICAL SERVICES OF NORTH CAROLINA, INC.  
701 CORPORATE CENTER DRIVE, SUITE 475, RALEIGH, NC 27607  
919-854-6200 919-854-6259 (fax)  
F - 0342

DOCUMENT NOT CONSIDERED FINAL  
UNLESS ALL SIGNATURES COMPLETED

PROJECT REFERENCE NO.	R-5021	SHEET NO.	UC-20
DESIGNED BY:		10/29/2001	
DRAWN BY:			
CHECKED BY:			
APPROVED BY:			
REVISED:			
NORTH CAROLINA DEPARTMENT OF TRANSPORTATION			UTILITY CONSTRUCTION PLANS ONLY
UTILITIES ENGINEERING SEC. PHONE: (919) 707-6690 FAX: (919) 250-4151			

UTILITY CONSTRUCTION



MATCH LINE -L- STA 269 + 00.00  
SEE SHEET UC-19

MATCH LINE -L- STA 283 + 00.00  
SEE SHEET UC-21

BM 41 ELEVATION = 42.16'  
N 76925 E 2282609  
-BL- STATION (R-502) 251+30 221' LT.  
R/R SPIKE IN BASE OF 12" PINE

55  
VINCENTO PANNULLO, ET UX  
DB 3549 PG 260  
DB 2342 PG 567  
MB U PG 9810

53  
CLAUDIA S. ROBINETTE EXEC.  
& LOIS M. SMITH  
DB 3553 PG 676  
DB 2720 PG 177  
MB U PG 9810

54  
ARGIRO F. MOE, ET AL  
DB 2157 PG 1063  
MB U PG 9810

ST. JAMES DEVELOPMENT CO., LLC.  
DB 1407 PG 984  
MB 60 PG 88  
MB 53 PG 40  
MB 18 PG 88

795' - 24" WATER LINE  
795' - DIRECTIONAL DRILLING OF 24"  
(GOING WEST)  
RJ, DIP  
SEE DETAILS SHEET UC-36  
LINE WL 9, SEE SHEET UC-49  
FOR PROFILE

41A  
BEGIN 24" HDD GOING WEST  
BEGIN 24" RJ, DIP  
STA. 44+75  
2 - 24" X 45° ELLS, RJ

70' - 24" WATER LINE  
DIP, RJ

BEGIN 24" HDD GOING EAST  
BEGIN 24" RJ, DIP  
STA. 45+45

1 - 24" VALVE  
BFV, RJ W/BOX

1 - 2" AIR AND VACUUM  
RELEASE VALVE  
SEE DETAIL WS-1, SHEET UC-36

1 - 6" BLOW OFF  
24" X 6" TEE, RJ W/BOX  
SEE DETAIL 1, SHEET UC-36

545' - 24" WATER MAIN  
545' - DIRECTIONAL DRILLING OF 24"  
(GOING EAST)  
RJ, DIP  
SEE DETAILS SHEET UC-36  
LINE WL 9, SEE SHEET UC-49  
FOR PROFILE

The estimated quantity of Ductile Iron Water Pipe Fittings on this plan sheet is 4,005 pounds. The actual quantity and type of fittings will vary based on field conditions.

△ REMOVED NOTE BELOW PAY ITEM FOR ABANDON UTILITY PIPE PER ADDENDUM NO. 1

DATE: 10/18/2001  
TIME: 2:52:39 PM  
DGN: ZVoleigh-UTRAL3\ugay\Projects\60428203\900\_MerA\915\_Utility\_Construction\201\_REV\VISIONS\R-5021\_UC\_20.dgn