

Prepared In the Office of:



AECOM TECHNICAL SERVICES OF NORTH CAROLINA, INC.
701 CORPORATE CENTER DRIVE, SUITE 475, RALEIGH, NC 27607
919-854-6200 919-854-6259 (fax)
F-0342

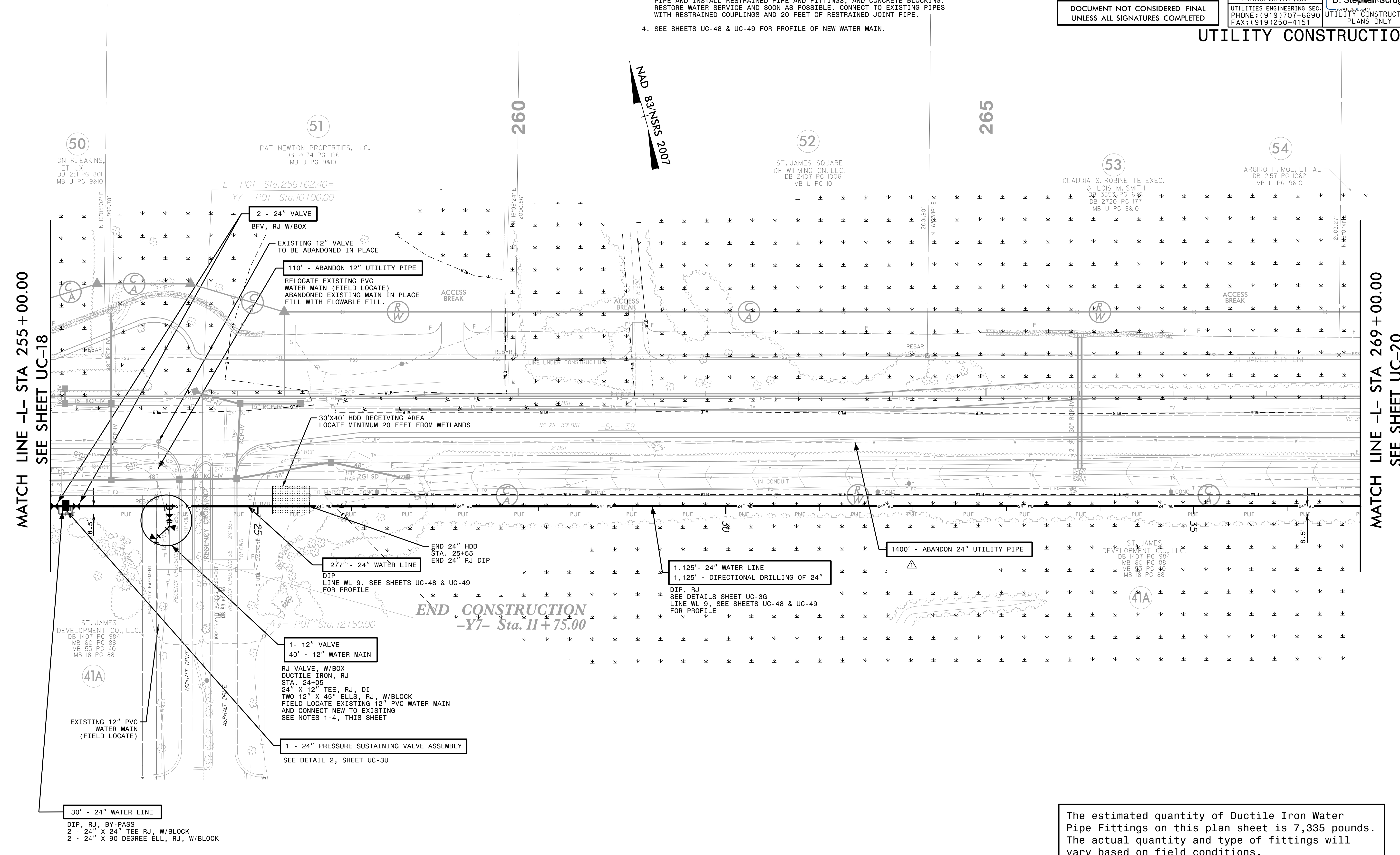
PROJECT REFERENCE NO.	R-5021	SHEET NO.	UC-19
DESIGNED BY:		10/29/2021	
DRAWN BY:			
CHECKED BY:			
APPROVED BY:			
REVISED:			
NORTH CAROLINA DEPARTMENT OF TRANSPORTATION		SEAL 10666	
UTILITIES ENGINEERING SEC.		D. Stephen Scroggs	
PHONE: (919) 707-6690		UTILITY CONSTRUCTION PLANS ONLY	
FAX: (919) 250-4151			

DOCUMENT NOT CONSIDERED FINAL
UNLESS ALL SIGNATURES COMPLETED

UTILITY CONSTRUCTION

NOTES

1. INSTALL NEW 24 INCH WATER MAIN UNDER EXISTING 12 INCH WATER MAIN IN ORDER TO KEEP THE 12 INCH WATER MAIN IN SERVICE UNTIL THE RECONNECTIONS CAN BE MADE.
2. KEEP INTERIORS OF NEW PIPES AND FITTINGS CLEAN OF DIRT. SWAB INTERIORS OF PIPES AND FITTINGS WITH 200 PARTS PER MILLION OF CHLORINE SOLUTION.
3. FIELD LOCATE EXISTING CUT-OFF VALVES AND SHUT OFF WATER. FIELD VERIFY LOCATION, SIZE AND MATERIAL OF EXISTING WATER MAIN. SAW CUT EXISTING PIPE AND INSTALL RESTRAINED PIPE AND FITTINGS AND CONCRETE BLOCKING. RESTORE WATER SERVICE AND SOON AS POSSIBLE. CONNECT TO EXISTING PIPES WITH RESTRAINED COUPLINGS AND 20 FEET OF RESTRAINED JOINT PIPE.
4. SEE SHEETS UC-48 & UC-49 FOR PROFILE OF NEW WATER MAIN.



MATCH LINE -L- STA 255+00.00
SEE SHEET UC-18

MATCH LINE -L- STA 269+00.00
SEE SHEET UC-20

END CONSTRUCTION
-Y7- Sta. 11+75.00

The estimated quantity of Ductile Iron Water Pipe Fittings on this plan sheet is 7,335 pounds. The actual quantity and type of fittings will vary based on field conditions.

△ REMOVED NOTE BELOW PAY ITEM FOR ABANDON UTILITY PIPE PER ADDENDUM NO. 1

DATE: 10/18/2021
TIME: 2:35:38 PM
DGN: ZVoleigh-USFAL3\Legacy\Projects\60428203\900_MerA\915_UTILITY Construction\2021_REV\VISIONS\R-5021_UC-F51192.dgn