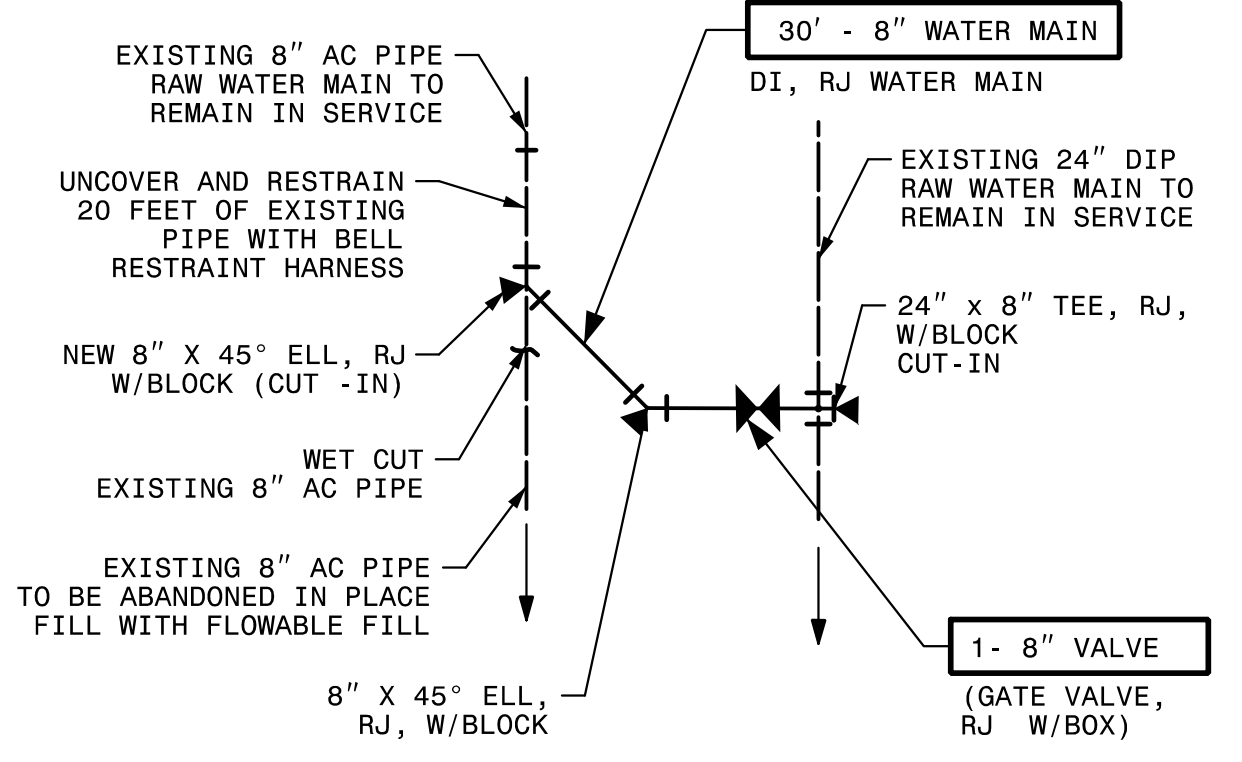
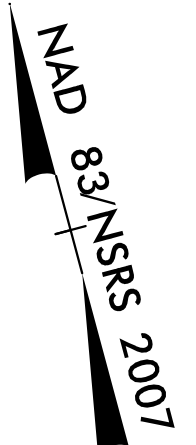


NOTES

1. SEE SHEET UC-48 FOR PROFILE OF NEW POTABLE WATER MAINS.



DETAIL D (FROM SHEET UC-17)
8\"/>

Prepared In the Office of:

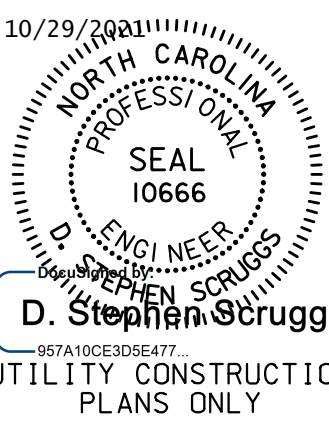


AECOM TECHNICAL SERVICES OF NORTH CAROLINA, INC.
701 CORPORATE CENTER DRIVE, SUITE 475, RALEIGH, NC 27607
919-854-6200 919-854-6259 (fax)
F - 0342

DOCUMENT NOT CONSIDERED FINAL
UNLESS ALL SIGNATURES COMPLETED

PROJECT REFERENCE NO. SHEET NO.

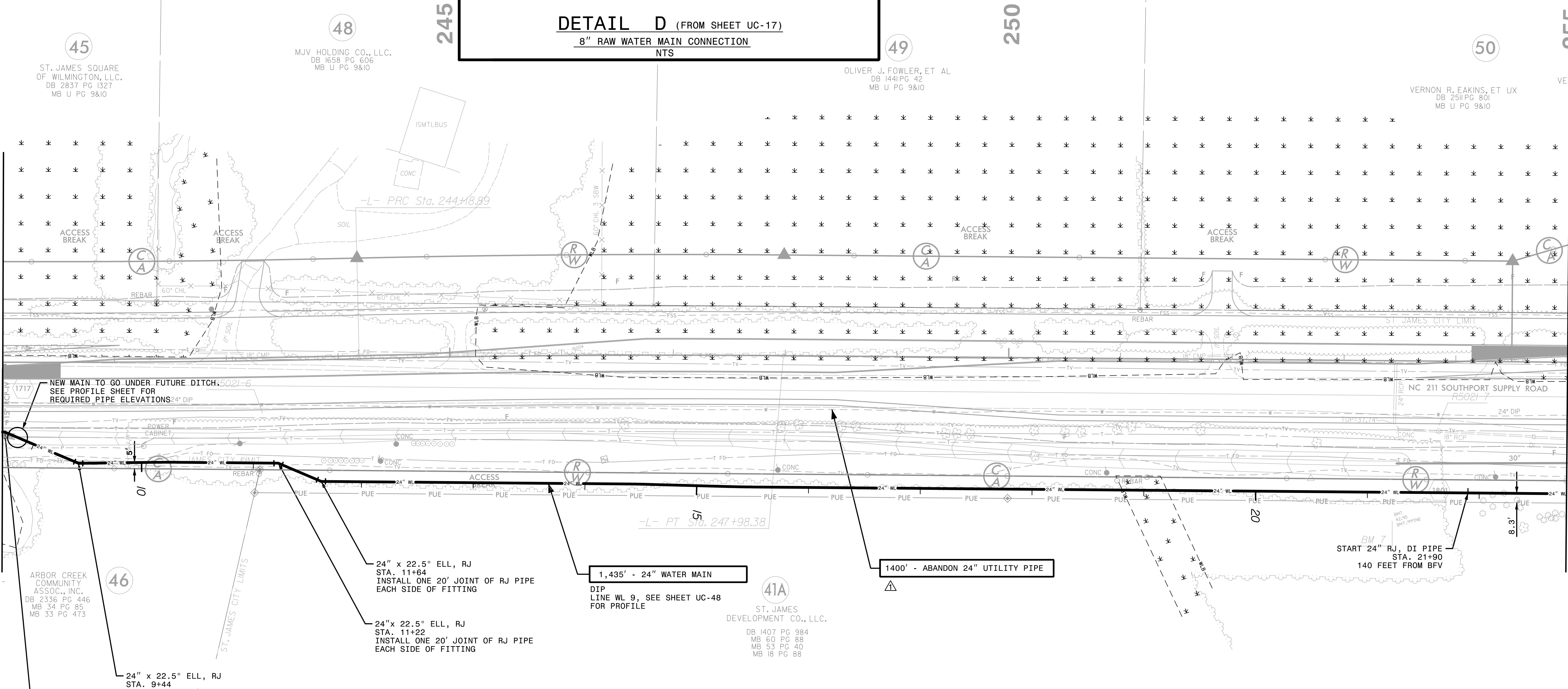
R-5021	UC-18
DESIGNED BY:	10/29/2021
DRAWN BY:	
CHECKED BY:	
APPROVED BY:	
REVISED:	
NORTH CAROLINA DEPARTMENT OF TRANSPORTATION	
UTILITIES ENGINEERING SEC.	
PHONE: (919) 707-6690	
FAX: (919) 250-4151	



UTILITY CONSTRUCTION

MATCH LINE -L- STA 241+00.00
SEE SHEET UC-17

MATCH LINE -L- STA 255+00.00
SEE SHEET UC-19



45
ST. JAMES SQUARE
OF WILMINGTON, LLC.
DB 2837 PG 1327
MB U PG 9&10

48
MJV HOLDING CO., LLC.
DB 1658 PG 606
MB U PG 9&10

49
OLIVER J. FOWLER, ET AL
DB 1441 PG 42
MB U PG 9&10

50
VERNON R. EAKINS, ET UX
DB 2511 PG 801
MB U PG 9&10

46
ARBOR CREEK
COMMUNITY
ASSOC., INC.
DB 2336 PG 446
MB 34 PG 85
MB 33 PG 473

24" x 22.5" ELL, RJ
STA. 11+64
INSTALL ONE 20' JOINT OF RJ PIPE
EACH SIDE OF FITTING

24" x 22.5" ELL, RJ
STA. 11+22
INSTALL ONE 20' JOINT OF RJ PIPE
EACH SIDE OF FITTING

24" x 22.5" ELL, RJ
STA. 9+44
INSTALL ONE 20' JOINT OF RJ PIPE
EACH SIDE OF FITTING

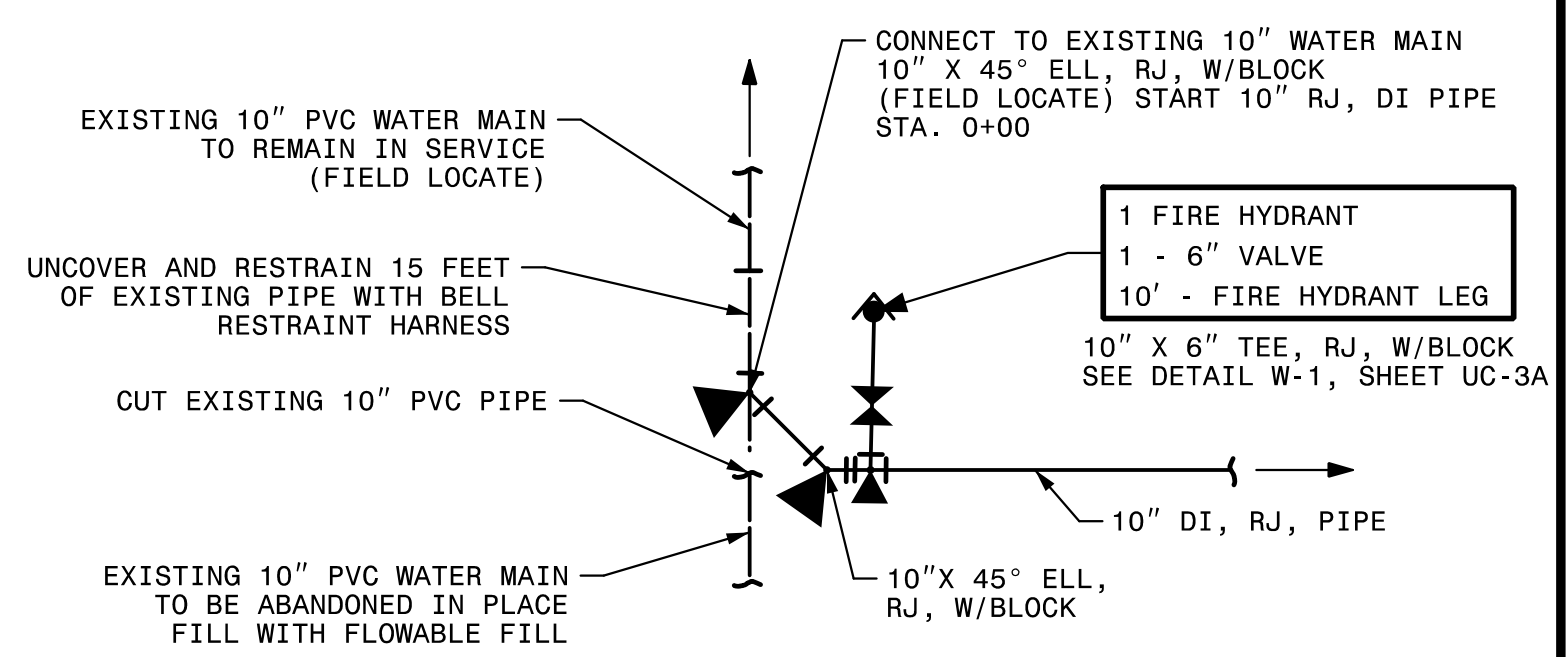
24" x 22.5" ELL, RJ
STA. 8+72
INSTALL ONE 20' JOINT OF RJ PIPE
EACH SIDE OF FITTING

1,435' - 24" WATER MAIN
DIP
LINE WL 9, SEE SHEET UC-48
FOR PROFILE

1400' - ABANDON 24" UTILITY PIPE

41A
ST. JAMES
DEVELOPMENT CO., LLC.
DB 1407 PG 984
MB 60 PG 88
MB 53 PG 40
MB 18 PG 88

START 24" RJ, DI PIPE
STA. 21+90
140 FEET FROM BFV



DETAIL C (FROM SHEET UC-17)
10\"/>

REMOVED NOTE BELOW PAY ITEM FOR ABANDON UTILITY PIPE PER ADDENDUM NO. 1

The estimated quantity of Ductile Iron Water Pipe Fittings on this plan sheet is 4,840 pounds. The actual quantity and type of fittings will vary based on field conditions.

DATE: 10/18/2021
TIME: 2:35:43 PM
DGN: Z:\Projects\UTILITY\Projects\60428203\900_MerA\915_Utility_Construction\2021_REV\VISIONS\R-5021_UC_FS1182.dgn