

Prepared In the Office of:

AECOM

AECOM TECHNICAL SERVICES OF NORTH CAROLINA, INC.
701 CORPORATE CENTER DRIVE, SUITE 475, RALEIGH, NC 27607
919-854-6200 919-854-6259 (fax)
F-0342

PROJECT REFERENCE NO. R-5021 SHEET NO. UC-17

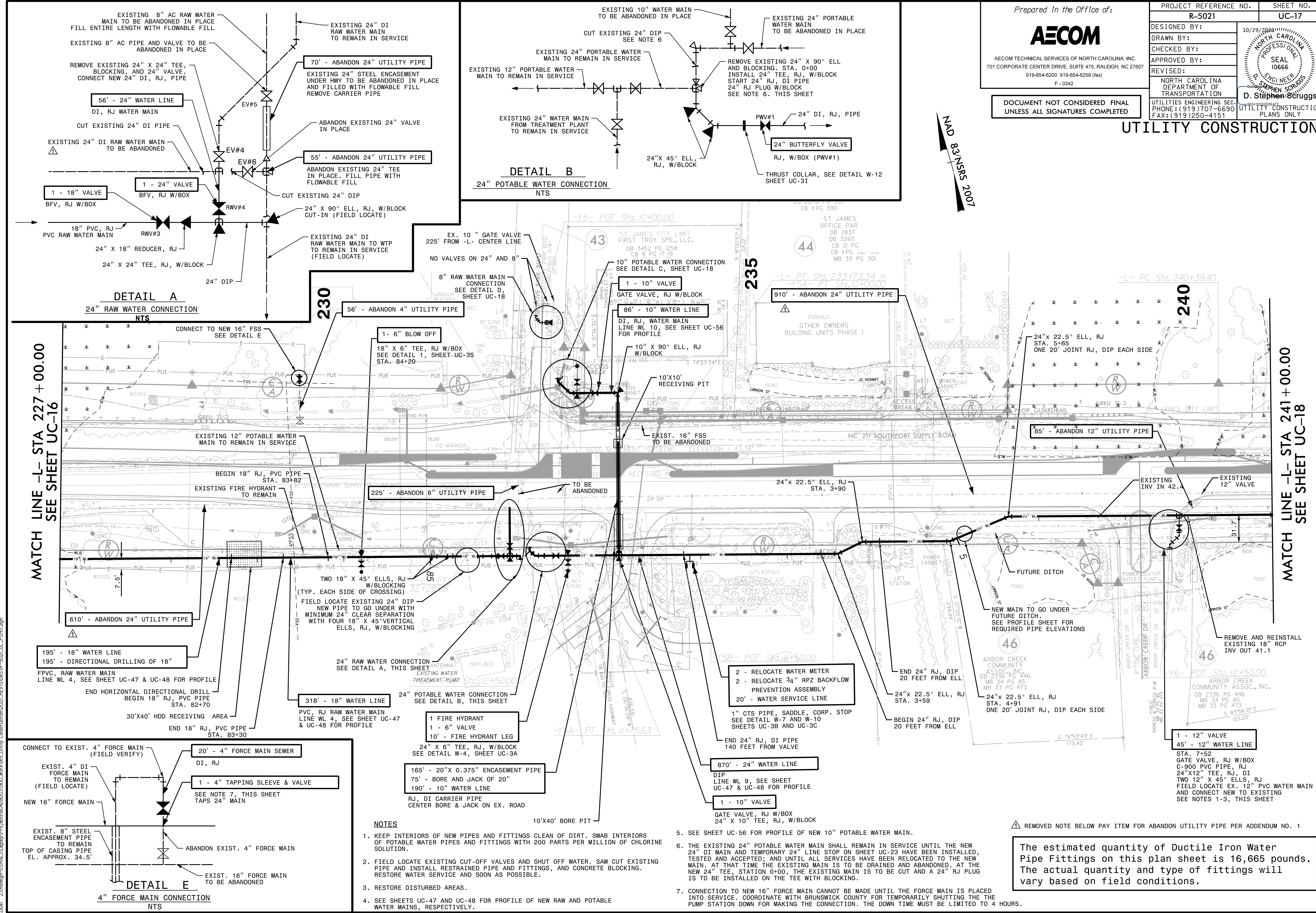
DESIGNED BY: 10/29/2001
DRAWN BY:
CHECKED BY:
APPROVED BY:
REVISED:

NORTH CAROLINA DEPARTMENT OF TRANSPORTATION
UTILITIES ENGINEERING SECTION
PHONE: (919) 707-6690
FAX: (919) 250-4151

SEAL 10666
D. Stephen Struggs
REGISTERED PROFESSIONAL ENGINEER
STATE OF NORTH CAROLINA
EXPIRES 12/31/2005

UTILITY CONSTRUCTION PLANS ONLY

DOCUMENT NOT CONSIDERED FINAL
UNLESS ALL SIGNATURES COMPLETED



DETAIL A
24" RAW WATER CONNECTION
NTS

DETAIL B
24" POTABLE WATER CONNECTION
NTS

DETAIL E
4" FORCE MAIN CONNECTION
NTS

- NOTES**
- KEEP INTERIORS OF NEW PIPES AND FITTINGS CLEAN OF DIRT. SWAB INTERIORS OF POTABLE WATER PIPES AND FITTINGS WITH 200 PARTS PER MILLION OF CHLORINE SOLUTION.
 - FIELD LOCATE EXISTING CUT-OFF VALVES AND SHUT OFF WATER. SAW CUT EXISTING PIPE AND INSTALL RESTRAINED PIPE AND FITTINGS, AND CONCRETE BLOCKING. RESTORE WATER SERVICE AND SOON AS POSSIBLE.
 - RESTORE DISTURBED AREAS.
 - SEE SHEETS UC-47 AND UC-48 FOR PROFILE OF NEW RAW AND POTABLE WATER MAINS, RESPECTIVELY.
 - SEE SHEET UC-56 FOR PROFILE OF NEW 10" POTABLE WATER MAIN.
 - THE EXISTING 24" POTABLE WATER MAIN SHALL REMAIN IN SERVICE UNTIL THE NEW 24" DI MAIN AND TEMPORARY 24" LINE STOP ON SHEET UC-23 HAVE BEEN INSTALLED, TESTED AND ACCEPTED; AND UNTIL ALL SERVICES HAVE BEEN RELOCATED TO THE NEW MAIN. AT THAT TIME THE EXISTING MAIN IS TO BE DRAINED AND ABANDONED. AT THE NEW 24" TEE, STATION 0+00, THE EXISTING MAIN IS TO BE CUT AND A 24" RJ PLUG IS TO BE INSTALLED ON THE TEE WITH BLOCKING.
 - CONNECTION TO NEW 16" FORCE MAIN CANNOT BE MADE UNTIL THE FORCE MAIN IS PLACED INTO SERVICE. COORDINATE WITH BRUNSWICK COUNTY FOR TEMPORARILY SHUTTING THE THE PUMP STATION DOWN FOR MAKING THE CONNECTION. THE DOWN TIME MUST BE LIMITED TO 4 HOURS.

REMOVED NOTE BELOW PAY ITEM FOR ABANDON UTILITY PIPE PER ADDENDUM NO. 1

The estimated quantity of Ductile Iron Water Pipe Fittings on this plan sheet is 16,665 pounds. The actual quantity and type of fittings will vary based on field conditions.

DATE: 10/18/2001
TIME: 2:31:22 PM
DGN: Z:\Voleigh\USRAL3\Legacy\Projects\60428203\900_MerA\9165_UTILITY Construction\2021_REV\VISIONS\R-5021_UC_17.dgn

MATCH LINE -L- STA 227 + 00.00
SEE SHEET UC-16

MATCH LINE -L- STA 241 + 00.00
SEE SHEET UC-18