

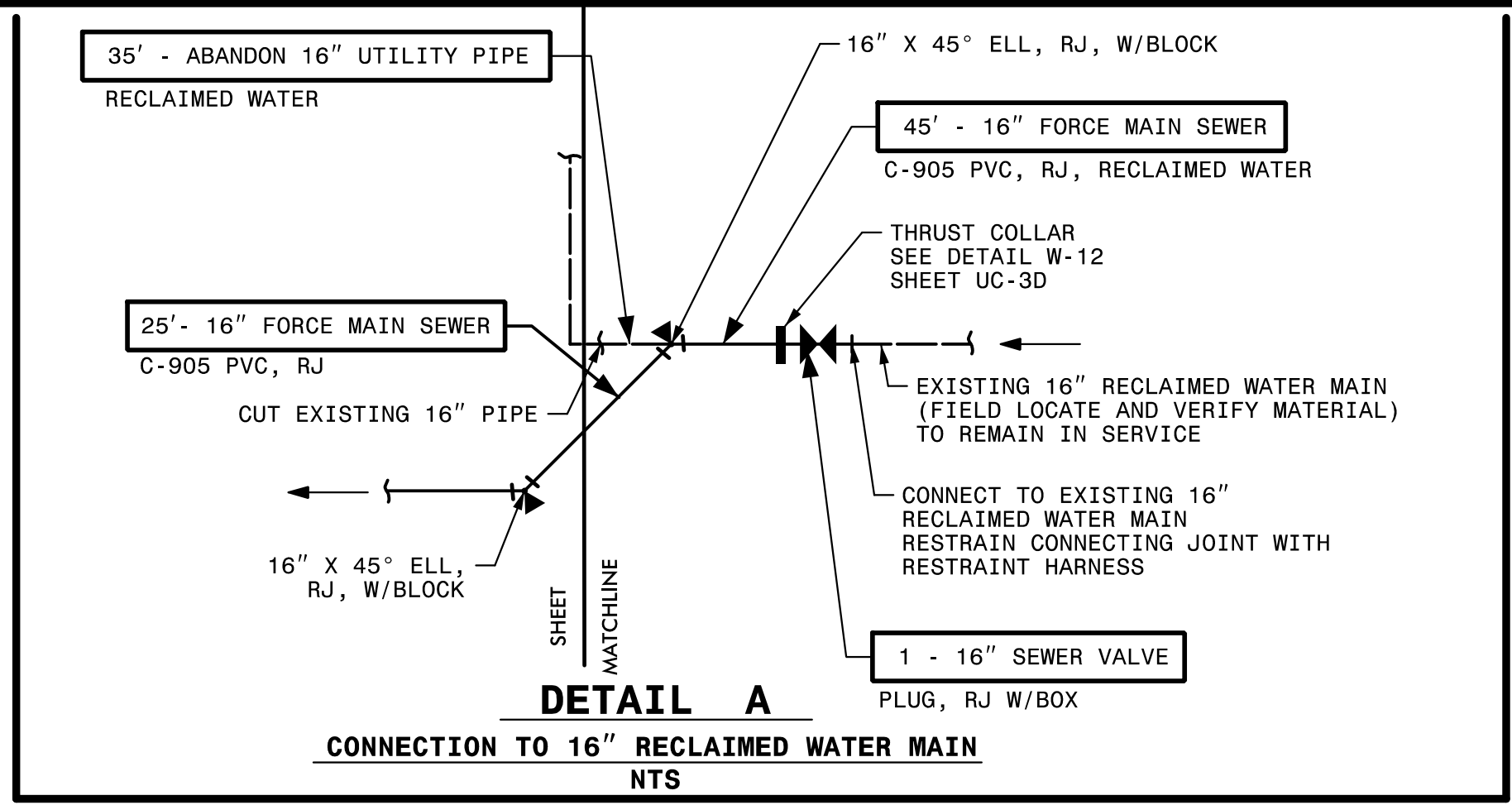


AECOM TECHNICAL SERVICES OF NORTH CAROLINA, INC.
701 CORPORATE CENTER DRIVE, SUITE 475, RALEIGH, NC 27607
919-854-6200 919-854-6259 (fax)
F-0342

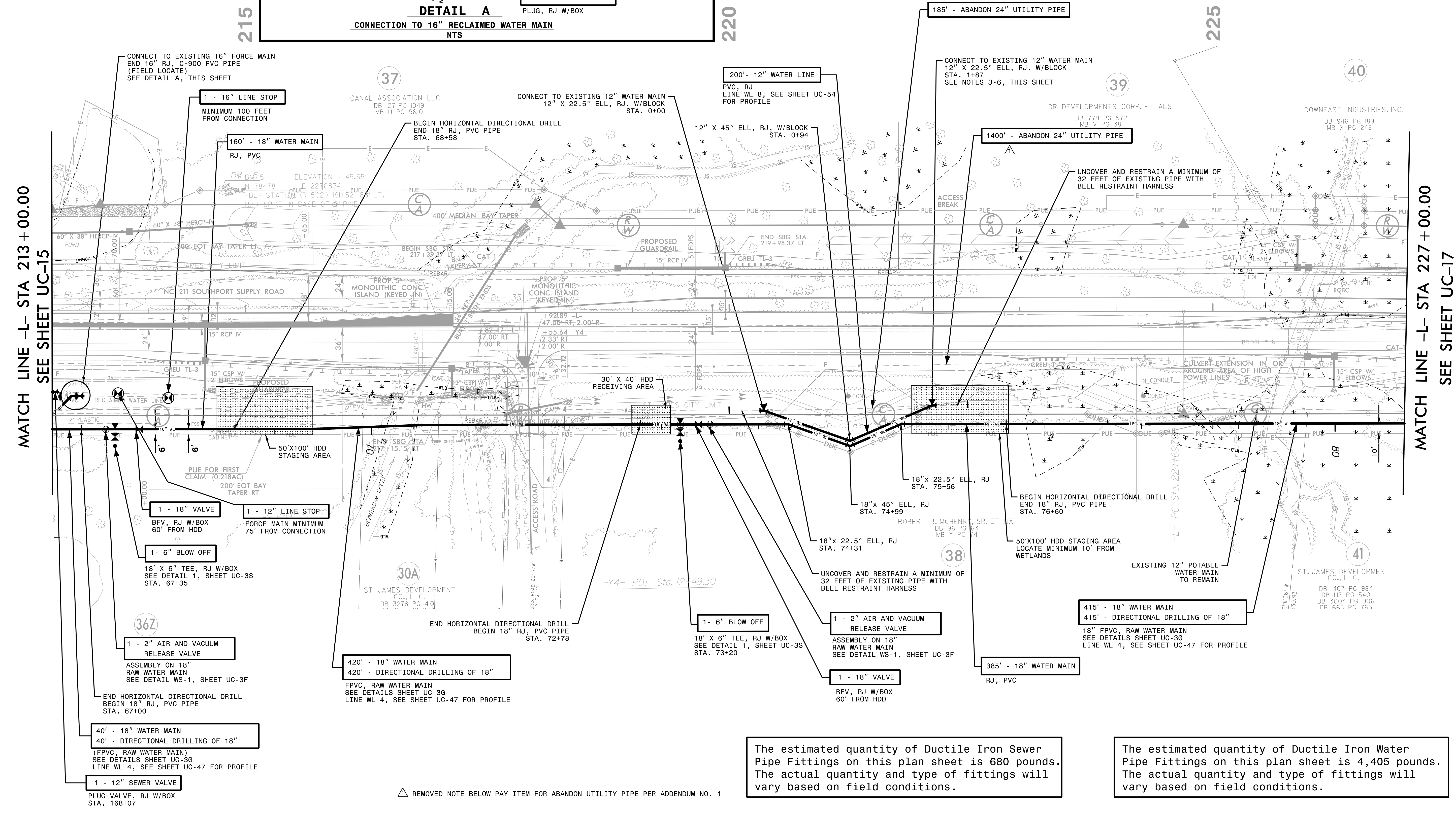
DOCUMENT NOT CONSIDERED FINAL
UNLESS ALL SIGNATURES COMPLETED

PROJECT REFERENCE NO.	SHEET NO.
R-5021	UC-16
DESIGNED BY:	10/29/2001
DRAWN BY:	
CHECKED BY:	
APPROVED BY:	
REVISED:	

UTILITY CONSTRUCTION



- #### NOTES
- SEE SHEET UC-44 FOR PROFILE OF NEW 12" FORCE MAIN.
 - SEE SHEETS UC-47 & UC-54 FOR PROFILE OF NEW 12" AND 18" WATER MAINS.
 - LOWER EXISTING 12" WATER MAIN TO AVOID CONFLICT WITH FUTURE STORM DRAIN DITCH. INSTALL NEW RESTRAINED JOINT WATER MAINS AND FITTINGS IN ORDER TO LOWER EXISTING PIPE.
 - KEEP INTERIORS OF NEW PIPES AND FITTINGS CLEAN OF DIRT. SWAB INTERIORS OF PIPES AND FITTINGS WITH 200 PARTS PER MILLION OF CHLORINE SOLUTION.
 - FIELD LOCATE EXISTING CUT-OFF VALVES AND SHUT OFF WATER. SAW CUT EXISTING PIPE AND INSTALL RESTRAINED PIPE AND FITTINGS, AND CONCRETE BLOCKING. RESTORE WATER SERVICE AND SOON AS POSSIBLE.



The estimated quantity of Ductile Iron Sewer Pipe Fittings on this plan sheet is 680 pounds. The actual quantity and type of fittings will vary based on field conditions.

The estimated quantity of Ductile Iron Water Pipe Fittings on this plan sheet is 4,405 pounds. The actual quantity and type of fittings will vary based on field conditions.