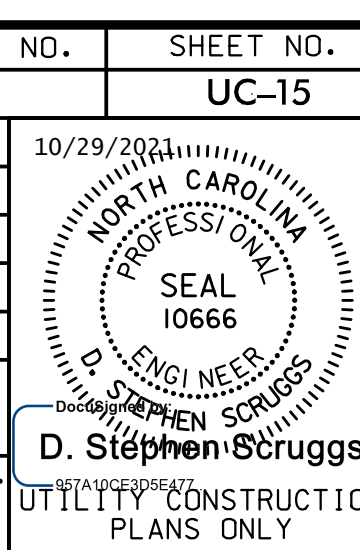


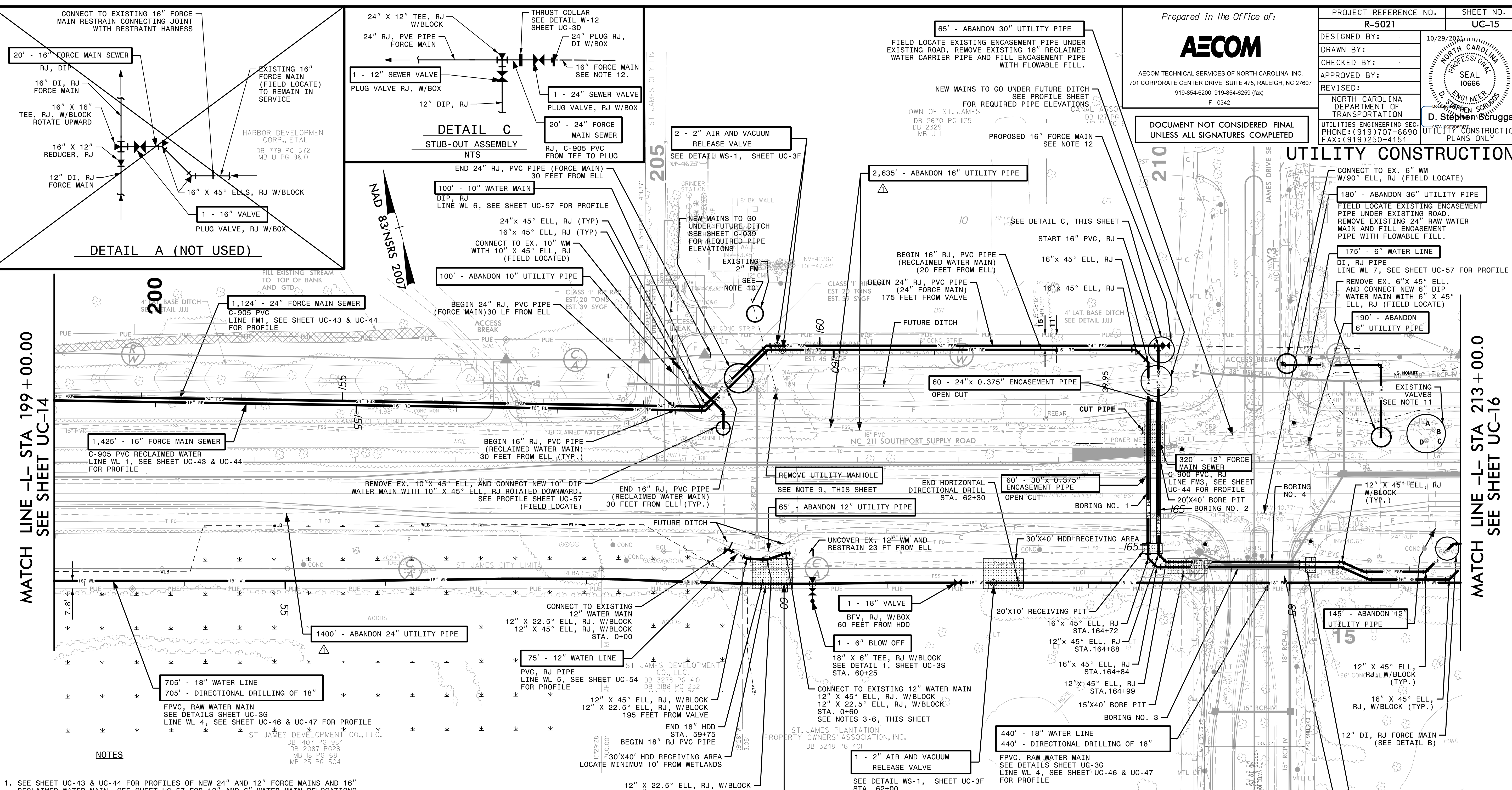
Prepared in the Office of:
AECOM
AECOM TECHNICAL SERVICES OF NORTH CAROLINA, INC.
701 CORPORATE CENTER DRIVE, SUITE 475, RALEIGH, NC 27607
919-854-6200 919-854-6259 (fax)
F-0342

PROJECT REFERENCE NO.	SHEET NO.
R-5021	UC-15
DESIGNED BY:	10/29/2021
DRAWN BY:	
CHECKED BY:	
APPROVED BY:	
REVISED:	
NORTH CAROLINA DEPARTMENT OF TRANSPORTATION	
UTILITIES ENGINEERING SECTION	
PHONE: (919) 707-6690	
FAX: (919) 250-4151	



DOCUMENT NOT CONSIDERED FINAL UNLESS ALL SIGNATURES COMPLETED

UTILITY CONSTRUCTION



MATCH LINE -L- STA 199 + 00.00 SEE SHEET UC-14

MATCH LINE -L- STA 213 + 00.00 SEE SHEET UC-16

BORING SCHEDULE

BORING NO. 1:	80' - 32"x 0.500" ENCASUREMENT PIPE 80' - BORE AND JACK OF 32" 100' - 16" WATER MAIN RJ, C-905 PVC CARRIER PIPE CENTERED ON EXISTING ROAD.
BORING NO. 2:	80' - 24"x 0.375" ENCASUREMENT PIPE 80' - BORE AND JACK OF 24" 100' - 12" FORCE MAIN SEWER RJ, C-900 PVC CARRIER PIPE CENTERED ON EXISTING ROAD
BORING NO. 3:	90' - 32"x 0.500" ENCASUREMENT PIPE 90' - BORE AND JACK OF 32" 110' - 16" WATER MAIN RJ, C-905 PVC CARRIER PIPE CENTERED ON EXISTING ROAD
BORING NO. 4:	90' - 24"x 0.375" ENCASUREMENT PIPE 90' - BORE AND JACK OF 24" 110' - 12" FORCE MAIN SEWER RJ, C-900 PVC CARRIER PIPE CENTERED ON EXISTING ROAD

The estimated quantity of Ductile Iron Water Pipe Fittings on this plan sheet is 4,495 pounds. The actual quantity and type of fittings will vary based on field conditions.

The estimated quantity of Ductile Iron Sewer Pipe Fittings on this plan sheet is 7,104 pounds. The actual quantity and type of fittings will vary based on field conditions.

DATE: 10/19/2021
TIME: 3:46:29 PM
DB: Z:\Projects\15\FINAL\Utility\Pro\15\1500_Mer1915_Utility Construction\2021_REV\1500\1500-UC-15.dwg