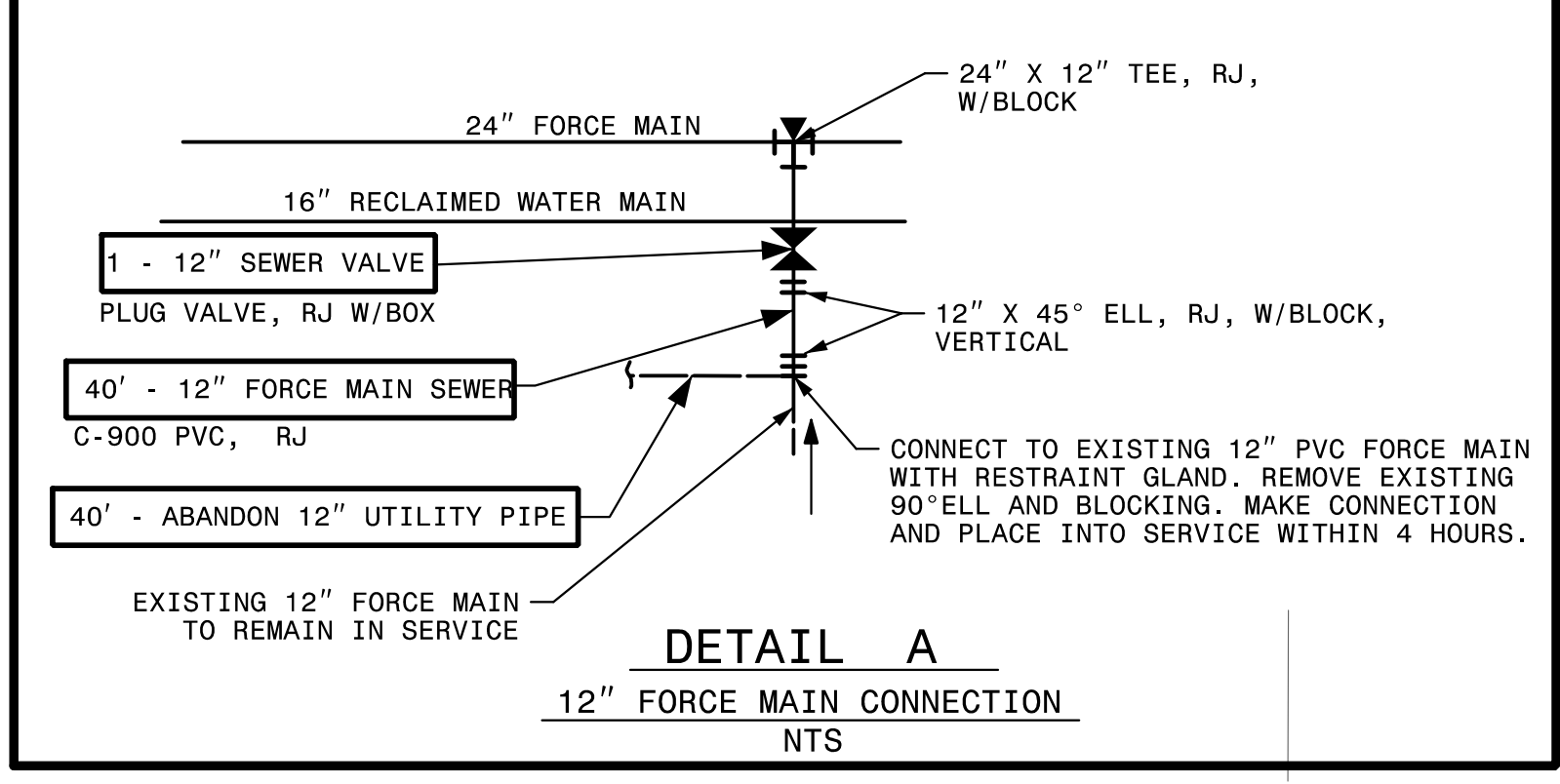


NAD  
84/NSBS  
2007

45' - 24" FORCE MAIN SEWER  
45' - DIRECTIONAL DRILL OF 24"  
SEE DETAILS SHEET UC-3G

CONNECT EXISTING 12" FORCE MAIN  
TO NEW 24" FORCE MAIN.  
SEE DETAIL A, THIS SHEET

- NOTES**
- SEE SHEETS UC-41 & UC-42 FOR PROFILES OF NEW 24" FORCE MAIN AND 16" RECLAIMED WATER MAIN.
  - SEE SHEET UC-44 FOR PROFILE OF NEW 18" WATER MAIN.
  - FIELD LOCATE EXISTING 18" RAW WATER MAIN AND VERIFY MATERIAL.
  - SEE SHEET NO. UC-3 FOR CONSTRUCTION SEQUENCE NOTES FOR RAW WATER MAIN.



Prepared In the Office of:

**AECOM**

AECOM TECHNICAL SERVICES OF NORTH CAROLINA, INC.  
701 CORPORATE CENTER DRIVE, SUITE 475, RALEIGH, NC 27607  
919-854-6200 919-854-6259 (fax)  
F-0342

PROJECT REFERENCE NO. R-5021  
SHEET NO. UC-11

DESIGNED BY: 10/29/2021  
DRAWN BY:  
CHECKED BY:  
APPROVED BY:  
REVISED:

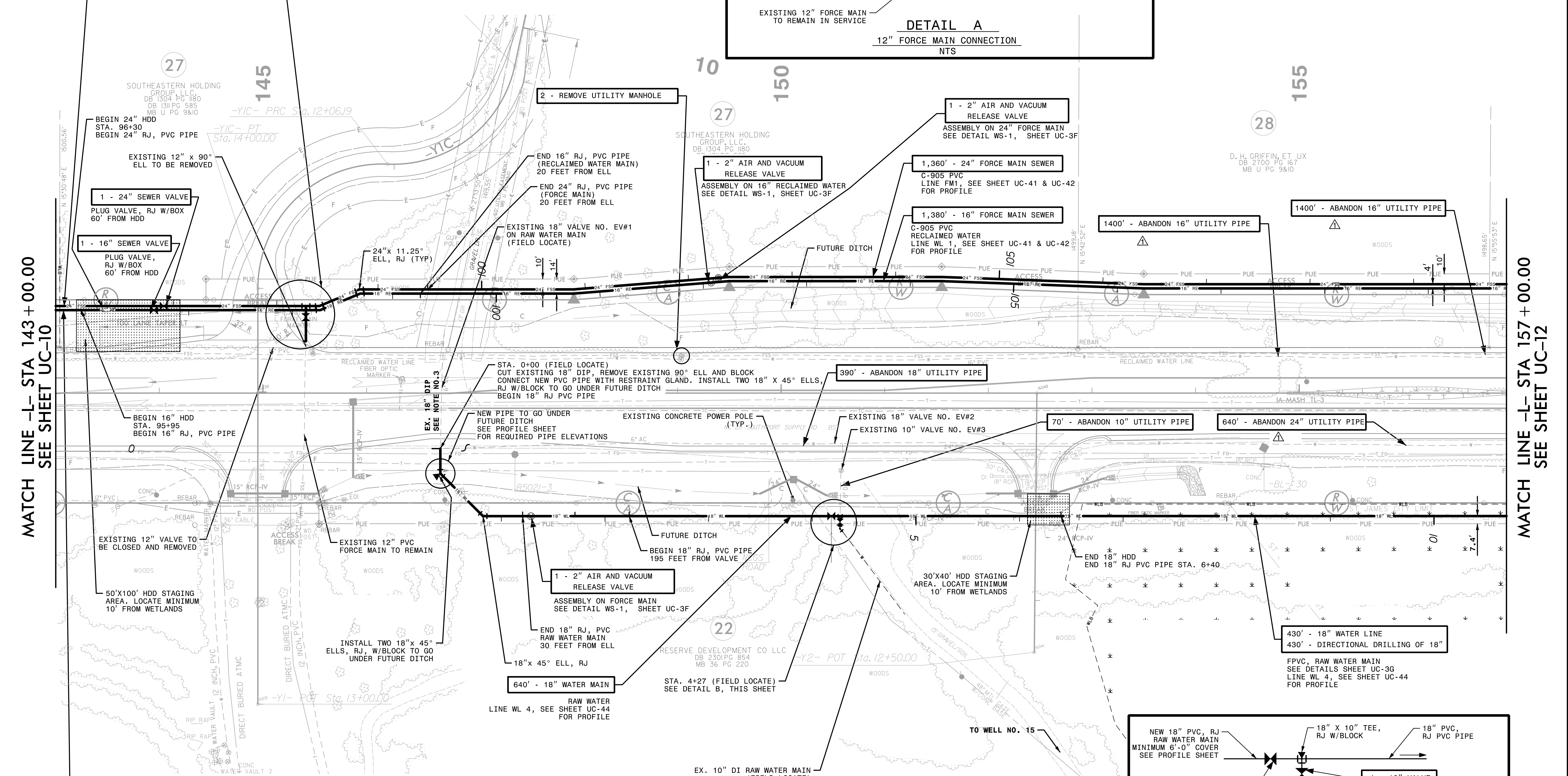
NORTH CAROLINA  
DEPARTMENT OF  
TRANSPORTATION

UTILITIES ENGINEERING SEC.  
PHONE: (919) 707-6690  
FAX: (919) 250-4151

UTILITY CONSTRUCTION  
PLANS ONLY

SEAL  
10666  
D. Stephen Struggs  
REGISTERED PROFESSIONAL ENGINEER

DOCUMENT NOT CONSIDERED FINAL  
UNLESS ALL SIGNATURES COMPLETED



MATCH LINE -L- STA 143 + 00.00  
SEE SHEET UC-10

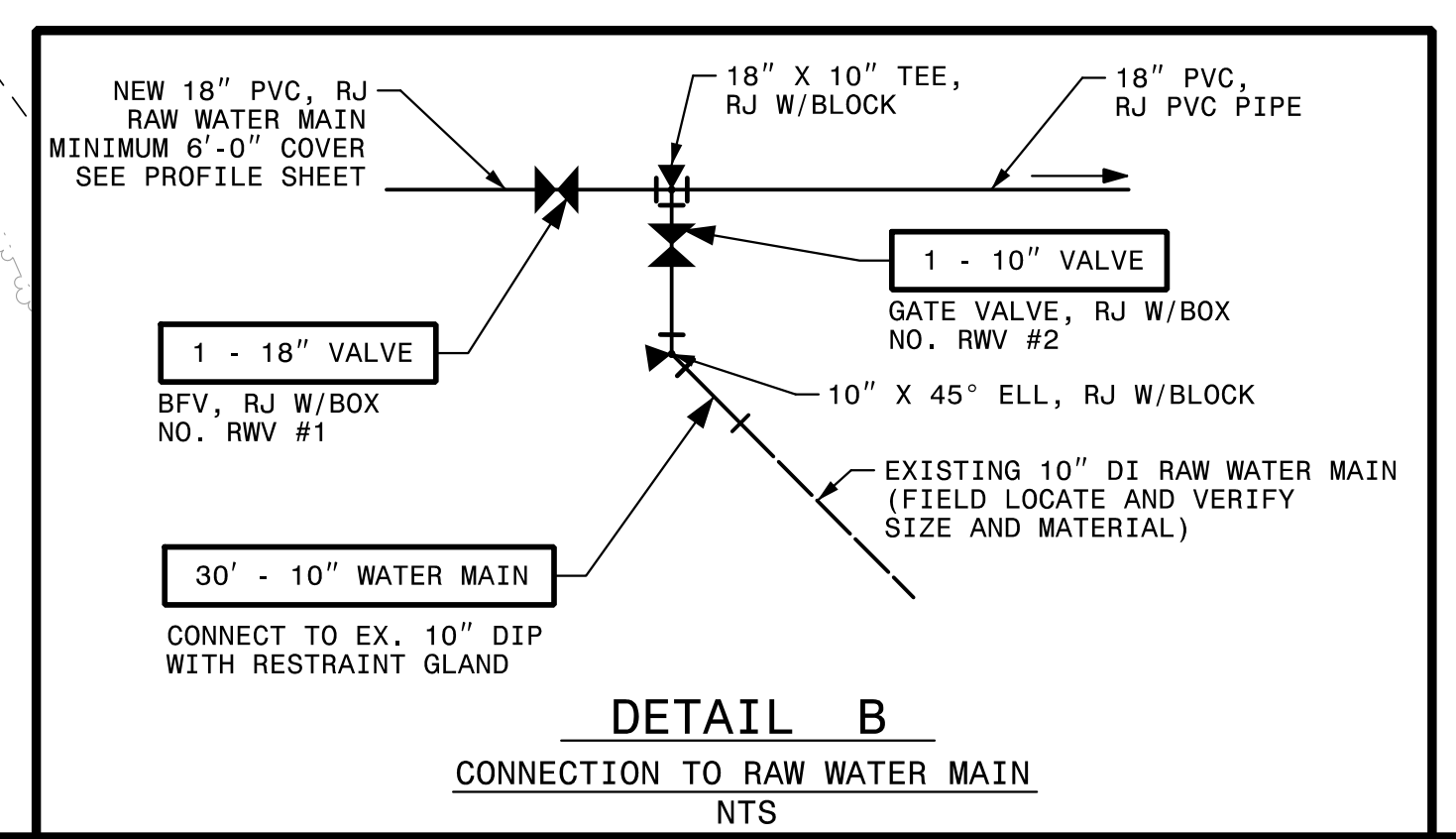
MATCH LINE -L- STA 157 + 00.00  
SEE SHEET UC-12

25' - 16" FORCE MAIN SEWER  
25' - DIRECTIONAL DRILL OF 16"  
  
(16" FPVC, RECLAIMED WATER )  
SEE DETAILS SHEET UC-G  
LINE WL 4, SEE SHEET UC-44  
FOR PROFILE

The estimated quantity of Ductile Iron Sewer Pipe Fittings on this plan sheet is 4,785 pounds. The actual quantity and type of fittings will vary based on field conditions.

640' - 18" WATER MAIN  
RAW WATER LINE WL 4, SEE SHEET UC-44 FOR PROFILE

The estimated quantity of Ductile Iron Water Pipe Fittings on this plan sheet is 3,295 pounds. The actual quantity and type of fittings will vary based on field conditions.



△ REMOVED NOTE BELOW PAY ITEM FOR ABANDON UTILITY PIPE PER ADDENDUM NO. 1

DATE: 10/18/2021  
TIME: 15:53:35 PM  
DBN: Z:\Projects\USRAL3\Legacy\Projects\60428203\900\_MerA\915\_UTILITY Construction\2021\_REV\VISIONS\R-5021\_UC\_FSH.dgn