

MAD 8/31/2007

NOTES

- SEE SHEETS UC-38 & UC-56 FOR PROFILES OF NEW MAINS.
- FIELD LOCATE EXISTING 16" FORCE MAIN AND 16" RECLAIMED WATER MAIN.
- A BENCHED TRENCH SHALL BE USED TO INSTALL THE NEW FORCE MAIN AND 16" RECLAIMED WATER MAIN FOR THE FULL LENGTH. THE 16" RECLAIMED WATER MAIN SHALL BE AT THE HIGHER ELEVATION. SEE BENCHING DETAIL 3, SHEET UC-3R.
- FOR THE NEW 24" FORCE MAIN USE TWO 16" X 22.5° ELL, RJ, TO LOWER THE FORCE MAIN APPROXIMATELY 34 INCHES BELOW THE RECLAIMED WATER MAIN SO AS TO ACHIEVE THE REQUIRED BENCHED TRENCH DESIGN.
- LOWER EXISTING 16" POTABLE WATER MAIN TO AVOID CONFLICT WITH FUTURE STORM DRAIN DITCH. INSTALL NEW RESTRAINED JOINT WATER MAINS AND FITTINGS IN ORDER TO LOWER EXISTING PIPE. SEE PROFILE SHEET UC-38.
- KEEP INTERIORS OF NEW POTABLE WATER PIPES AND FITTINGS CLEAN OF DIRT. SWAB INTERIORS OF PIPES AND FITTINGS WITH 200 PARTS PER MILLION OF CHLORINE SOLUTION.
- FIELD LOCATE EXISTING CUT-OFF VALVES AND SHUT OFF WATER. SAW CUT EXISTING PIPE AND INSTALL RESTRAINED PIPE AND FITTINGS, AND CONCRETE BLOCKING. RESTORE WATER SERVICE AS SOON AS POSSIBLE.
- RECLAIMED WATER FROM THE EXISTING 16" RECLAIMED WATER MAIN SHALL BE USED TO FILL AND TEST THE NEW 24" FORCE MAIN AND 16" RECLAIMED WATER MAIN. REMOVE THE 3-INCH TAPPING SLEEVE AND VALVE FROM THE TWO NEW MAINS AND REPLACE WITH 24" STAINLESS STEEL REPAIR SLEEVE ONCE TESTING HAS BEEN COMPLETED.
- INSTALL TWO 16-INCH TEMPORARY LINE STOPS ON THE EXISTING FORCE MAIN AND TWO 16-INCH TEMPORARY LINE STOPS ON THE EXISTING RECLAIMED WATER MAIN WHERE SHOWN. THE PURPOSE OF THESE LINE STOPS IS TO REDUCE THE VOLUME OF WATER TO BE DRAINED AND THE AMOUNT OF DOWN TIME FOR CONNECTION TO THE NEW MAINS. INSTALL THE FOUR LINE STOPS PRIOR TO MAKING THE CONNECTIONS.
- THE CONNECTION BETWEEN THE NEW AND EXISTING FORCE MAIN SHALL BE MADE WITHIN A 4-HOUR PERIOD AT NIGHT ON A WEEKEND. SEE PROJECT SPECIFIC NOTE #5 ON SHEET UC-3. THE SEWAGE AND RECLAIMED WATER THAT DRAINS FROM THE CUT PIPES SHALL BE REMOVED FROM THE PIT WITH A VACUUM TRUCK AND PROPERLY DISPOSED OFF SITE.

Prepared In the Office of:

# AECOM

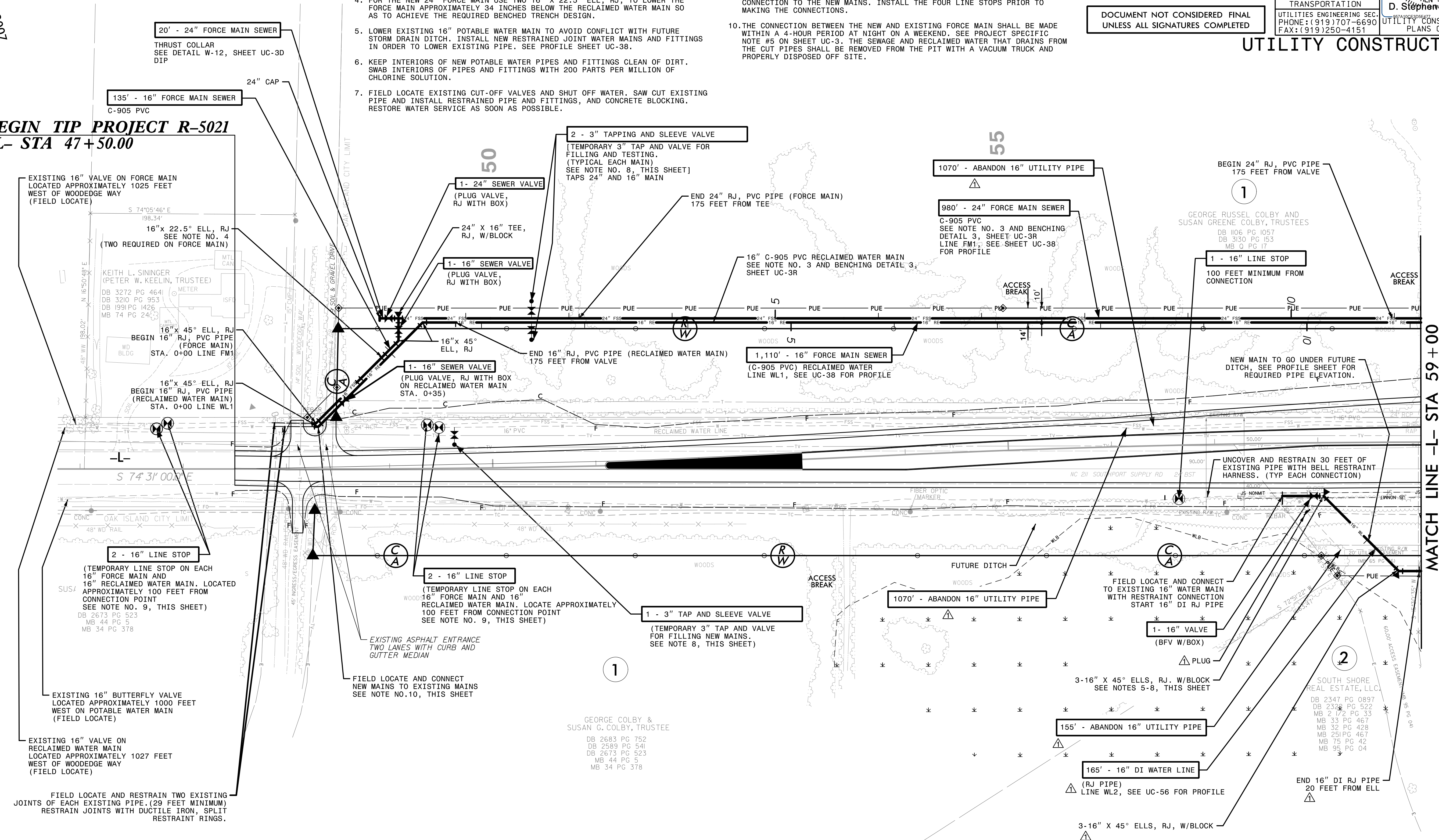
AECOM TECHNICAL SERVICES OF NORTH CAROLINA, INC.  
701 CORPORATE CENTER DRIVE, SUITE 475, RALEIGH, NC 27607  
919-854-6200 919-854-6259 (fax)  
F-0342

DOCUMENT NOT CONSIDERED FINAL  
UNLESS ALL SIGNATURES COMPLETED

|  |        |                                 |      |
|--|--------|---------------------------------|------|
| PROJECT REFERENCE NO.  | R-5021 | SHEET NO.                       | UC-4 |
| DESIGNED BY:   |        | 10/29/2007                      |      |
| DRAWN BY:  |        |                                 |      |
| CHECKED BY:  |        |                                 |      |
| APPROVED BY:   |        |                                 |      |
| REVISED:   |        |                                 |      |
| NORTH CAROLINA DEPARTMENT OF TRANSPORTATION                          |        | SEAL 10666                      |      |
| UTILITIES ENGINEERING SEC. PHONE: (919) 707-6690 FAX: (919) 250-4151 |        | D. Stephen Scruggs              |      |
|  |        | UTILITY CONSTRUCTION PLANS ONLY |      |

## UTILITY CONSTRUCTION

**BEGIN TIP PROJECT R-5021**  
**-L- STA 47+50.00**



The estimated quantity of Ductile Iron Sewer Pipe Fittings on this plan sheet is 3,339 pounds. The actual quantity and type of fittings will vary based on field conditions.

The estimated quantity of Ductile Iron Water Pipe Fittings on this plan sheet is 2,133 pounds. The actual quantity and type of fittings will vary based on field conditions. ⚠

⚠ 16" WATER MAIN RELOCATED AND EXTENDED PER ADDENDUM NO. 1. REMOVED NOTE BELOW PAY ITEM FOR ABANDON UTILITY PIPE PER ADDENDUM NO. 1.

DATE: 10/19/2007  
TIME: 3:25:05 PM  
DGN: Z:\Projects\USRALY\Utility Construction\2021\_REV\REV\01\UC-FISHH\_REV.dgn